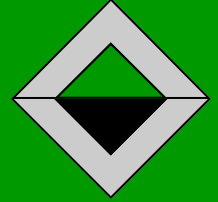


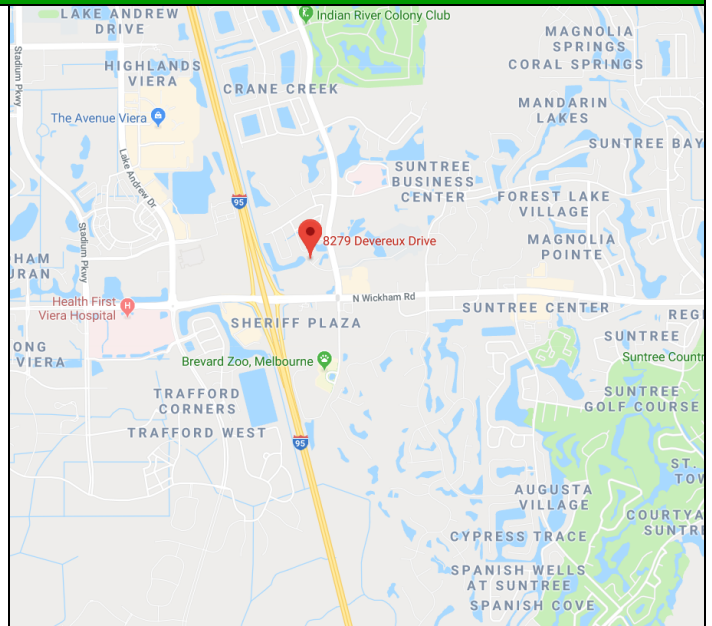
OFFICE FOR LEASE

WICKHAM COMMONS

8249 Devereux Drive, Melbourne, FL 32940



- ▲ Prestigious Office Complex in Viera
- ▲ Park Like Setting with Lots of Oaks and Palms and Lake Views
- ▲ Convenient Location off Murrell Road and Close to I-95
- ▲ Brevard County Courthouse and Viera Hospital are within Minutes, plus Many area Restaurants & Shops
- ▲ 2,753 SF Office Space
- ▲ \$17.50/SF/YR Plus \$4.45/SF/YR/NNN



Information contained herein has been obtained from others and is considered to be reliable; however, a prospective purchaser, agent, or lessee is expected to verify all information to their satisfaction. We make no guarantee, warranty, or representations herein.

Licensed Real Estate Broker



Commercial

- ▲ Management
- ▲ Leasing
- ▲ Sales

Leasing Contact:

Joe Poirier

JM Real Estate, Inc.

Office: 321.242.2882 ext. 206

Cell: 321.537.7996

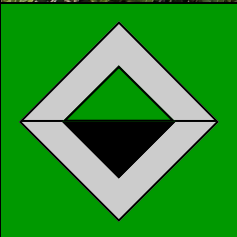
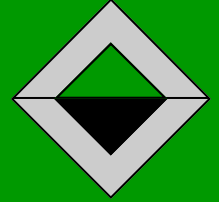
Email: Joe@JMRealEstate.com

WWW.JMREALESTATE.COM

OFFICE FOR LEASE

WICKHAM COMMONS

8249 Devereux Drive, Melbourne, FL 32940



Information contained herein has been obtained from others and is considered to be reliable; however, a prospective purchaser, agent, or lessee is expected to verify all information to their satisfaction. We make no guarantee, warranty, or representations herein.

Licensed Real Estate Broker



Commercial

- ▲ Management
- ▲ Leasing
- ▲ Sales

Leasing Contact:

Joe Poirier

JM Real Estate, Inc.

Office: 321.242.2882 ext. 206

Cell: 321.537.7996

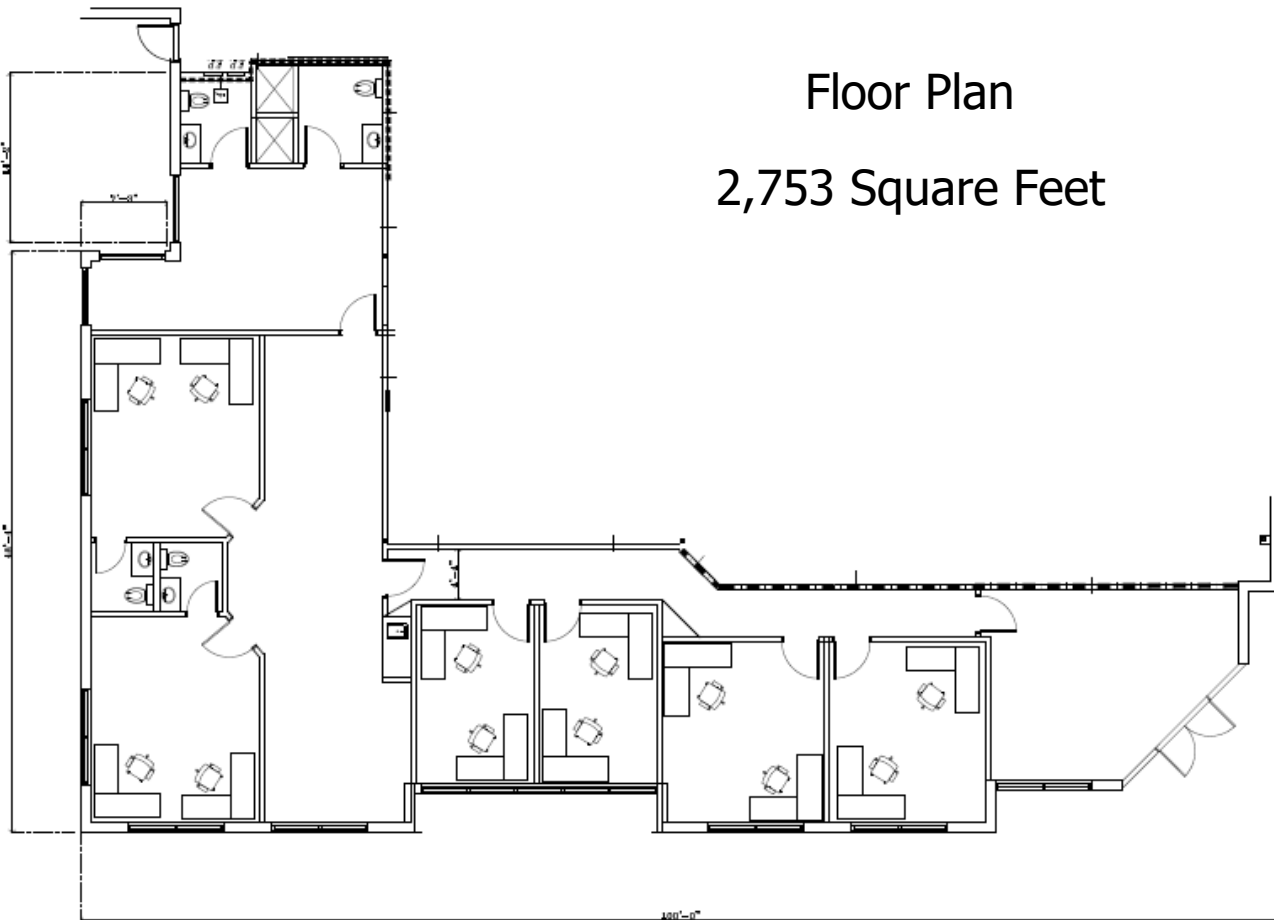
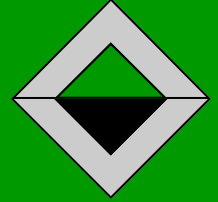
Email: Joe@JMRealEstate.com

WWW.JMREALESTATE.COM

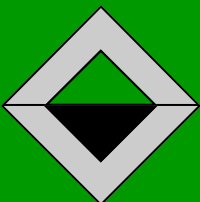
OFFICE FOR LEASE

WICKHAM COMMONS

8249 Devereux Drive, Melbourne, FL 32940



Floor Plan
2,753 Square Feet



Information contained herein has been obtained from others and is considered to be reliable; however, a prospective purchaser, agent, or lessee is expected to verify all information to their satisfaction. We make no guarantee, warranty, or representations herein.

Licensed Real Estate Broker



Commercial

- ▲ Management
- ▲ Leasing
- ▲ Sales

Leasing Contact:

Joe Poirier

JM Real Estate, Inc.

Office: 321.242.2882 ext. 206

Cell: 321.537.7996

Email: Joe@JMRealEstate.com

WWW.JMREALESTATE.COM