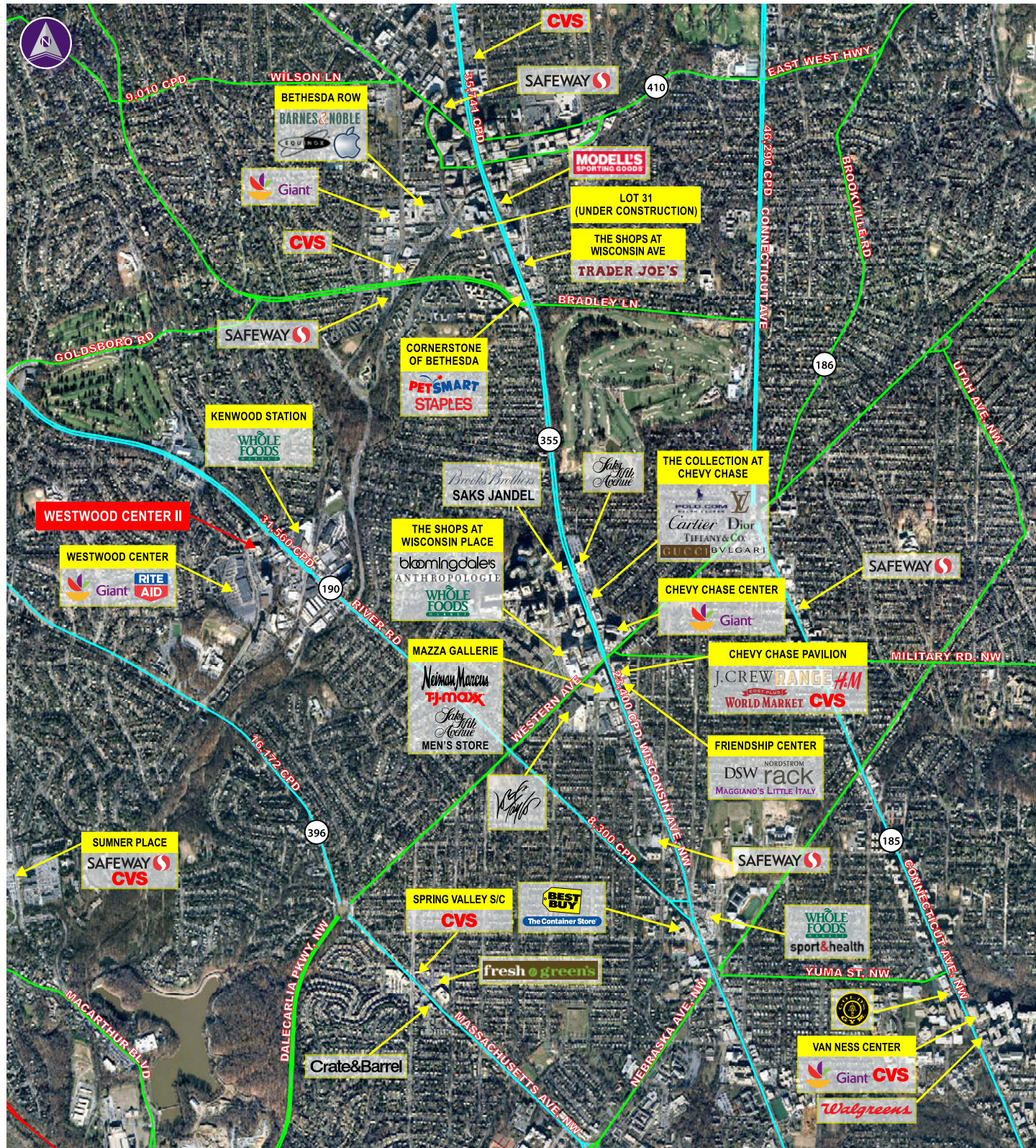


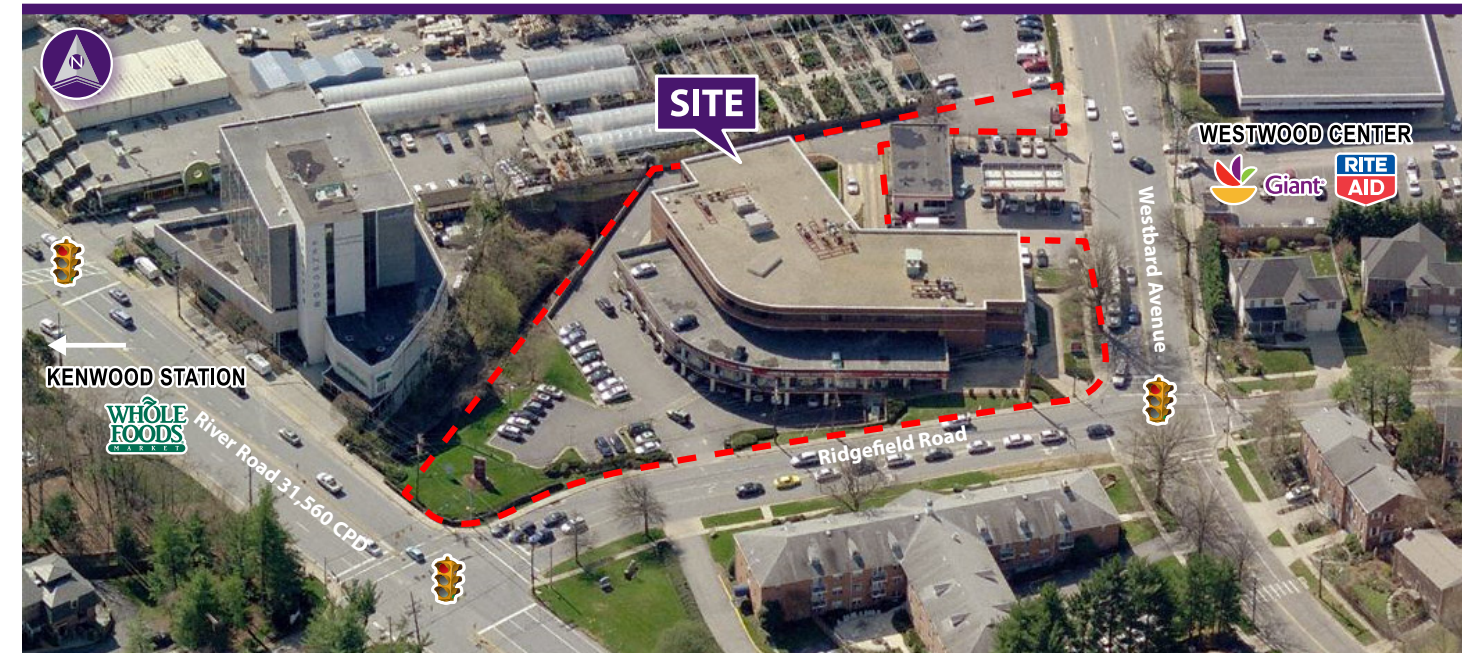
## Westwood Center II ■ Bethesda, Maryland



Information herein has been obtained from sources believed to be reliable. While we do not doubt its accuracy, we have not verified it and make no guarantee, warranty or representation about it. Independent confirmation of its accuracy and completeness is your responsibility. H&R Retail, Inc.

## Westwood Center II

**Multi-Level Retail/Office**  
Bethesda, Maryland



### Property Highlights

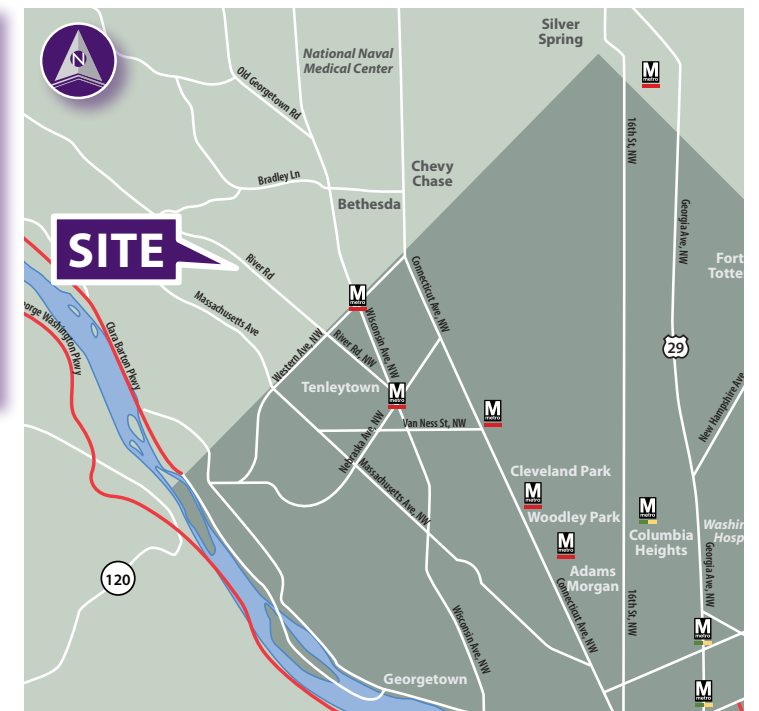
- Located at the signalized intersection of River Road and Ridgefield Road
- Adjacent to the Giant anchored center, Westwood Center, and across from the Whole Foods Market center
- GLA: 53,293 square feet
- Incredible trade area and demographics

### Demographics (2013 Estimated)

	1 Mile	3 Mile	5 Mile
Population	20,588	140,049	452,507
Average HH Income	\$208,385	\$216,588	\$161,261
Number of Employees	7,578	118,263	275,067

### Please Contact

<b>David A. Ward</b>	<b>James P. Crilley</b>
410.308.6350 (direct)	240.482.3605 (direct)
410.308.0800 (office)	301.656.3030 (office)
410.486.2733 (fax)	301.656.6222 (fax)
<a href="mailto:dward@hrretail.com">dward@hrretail.com</a>	<a href="mailto:jcrilley@hrretail.com">jcrilley@hrretail.com</a>





## Westwood Center II ■ Bethesda, Maryland

