

FOR SALE

Highway 402 Land
Loveland, CO

INDUSTRIAL LAND IN PRIME LOCATION

PROPERTY TYPE
LAND

AVAILABLE
2.58 ACRES

PRICE
\$599,000
(\$5.33/SF)

2.58 Acres



FEATURES:

- Less than 3 miles from I-25 & Hwy 402 interchange with no stop lights
- Excellent visibility - 17,000 VPD
- One of two major gateways into Loveland with lots of future potential
- Industrial zoning within the city of Loveland
- Flat topography

REALTEC
COMMERCIAL REAL ESTATE SERVICES

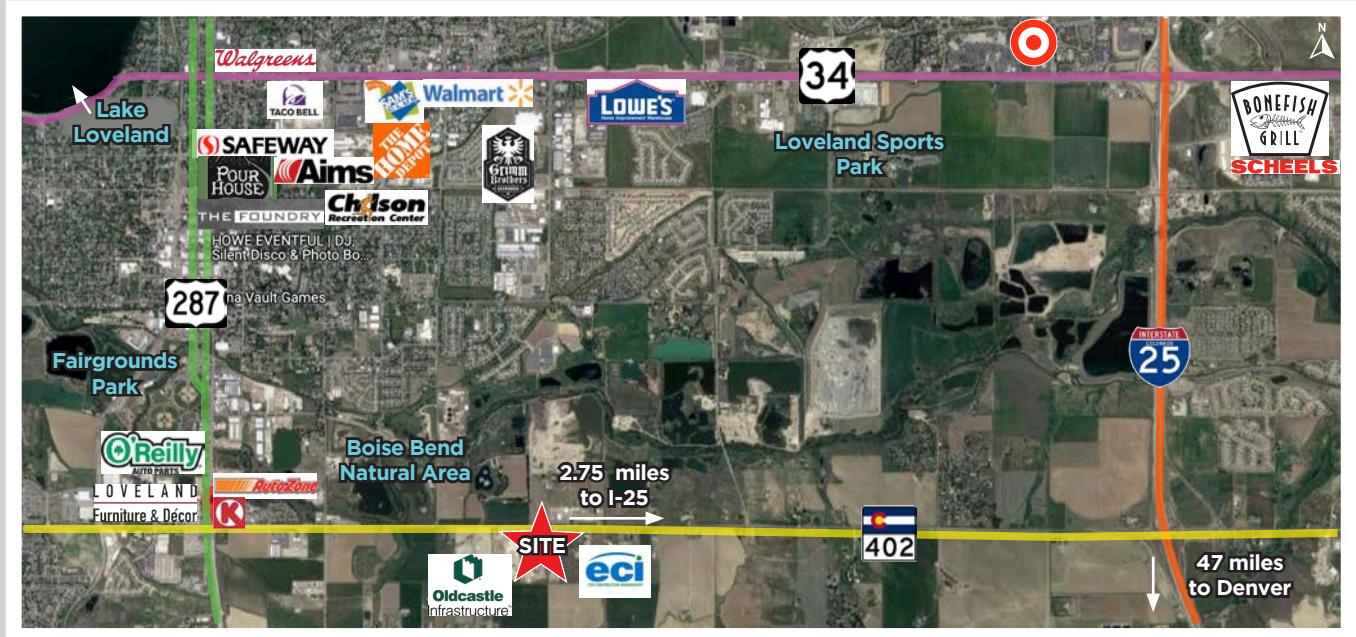
Bruce Campbell
970.231.6824
bruce@realtec.com

Patrick O'Donnell
970.231.5576
patricko@realtec.com

VIEW MORE REALTEC LISTINGS AT WWW.REALTEC.COM

FOR SALE

Highway 402 Land
Loveland, CO



Fort Collins

712 Whaler's Way, Bld. B, Suite 300
Fort Collins, CO 80525
970.229.9900

Loveland

200 E. 7th Street, Suite 418
Loveland, CO 80537
970.593.9900

Greeley

1711 61st Avenue, Suite 104
Greeley, CO 80634
970.346.9900

REALTEC
COMMERCIAL REAL ESTATE SERVICES