

BAY VIEW OFFICE SPACE
LITTLE ITALY / COLUMBIA DISTRICT IN DOWNTOWN

1320
COLUMBIA ST.

SAN DIEGO | CA 92101



CUSHMAN &
WAKEFIELD

1320 COLUMBIA ST



Suite Number	Square Footage	Available	Price \$/SF	Notes
200	±3,507	7/1/2021	\$2.05/SF FSG	Mix of private offices, break room, open area for cubes and storage. Building signage is available.
210	±4,874	Now	\$2.05/SF FSG	New Spec Suite Complete! New lighting throughout, partial views of San Diego Bay, private offices with interior glass windows and breakroom. Building signage is available.
200/210	±8,381	7/1/2021	\$2.05/SF FSG	Full Floor can be made available prior to 7/1/2021 (call brokers). Building signage is available.

PROPERTY FEATURES

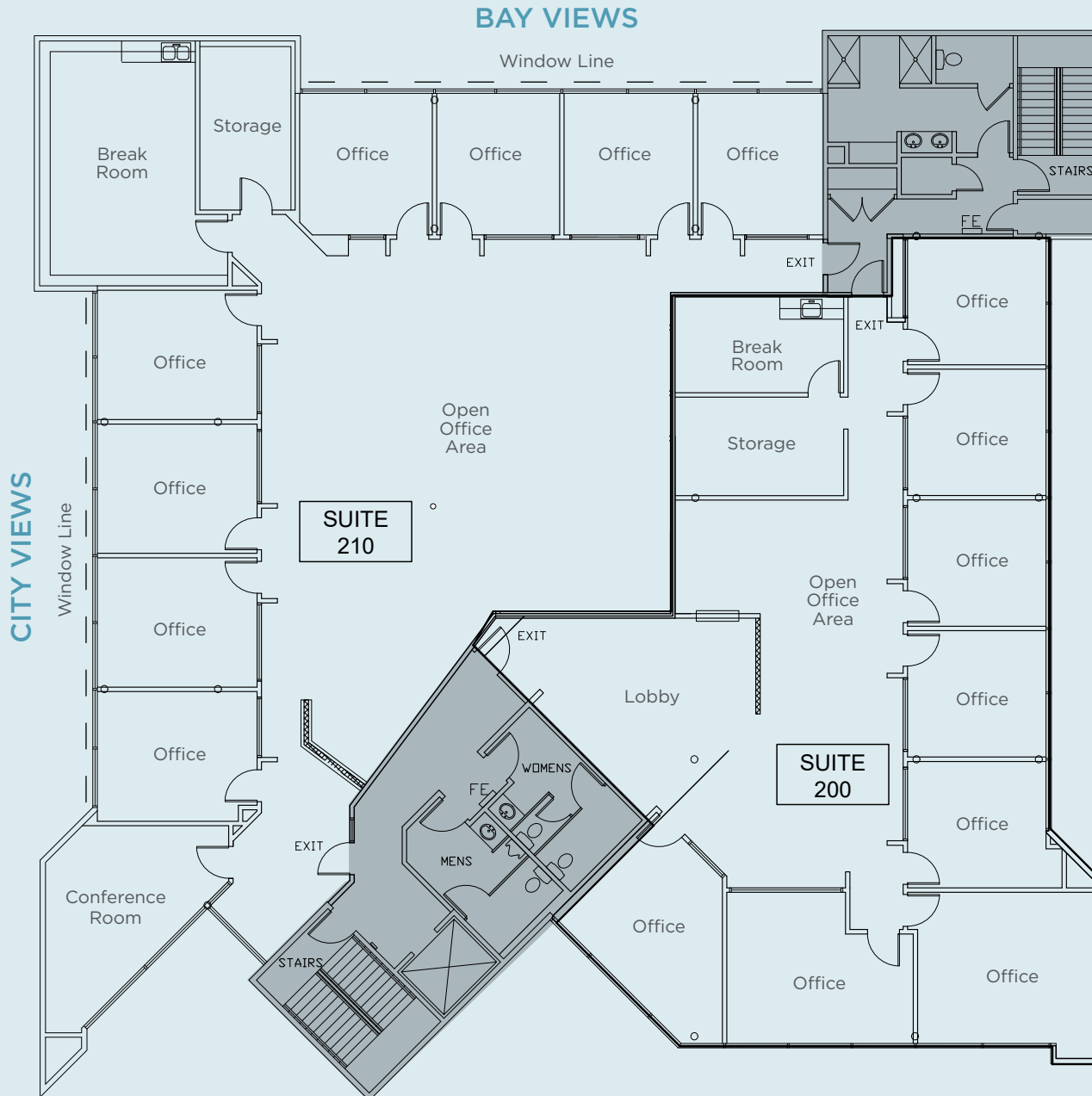
- Located on the Westside of Downtown San Diego within walking distance to Little Italy, the Embarcadero, Trolley/Coaster Station, restaurants and hotels.
- City and Bay Views
- Building Signage Opportunity
- Secured Entry Building
- 5 Reserved Parking Spaces (\$200 per stall)
- Additional surface parking available in adjacent parking lot
- Fiber Optic offered by AT&T and Cox Cable
- Common Area Conference Room Available
- Excellent access to I-5 and the San Diego International Airport



SUITE 200/210

±8,381 RENTABLE SQ FT

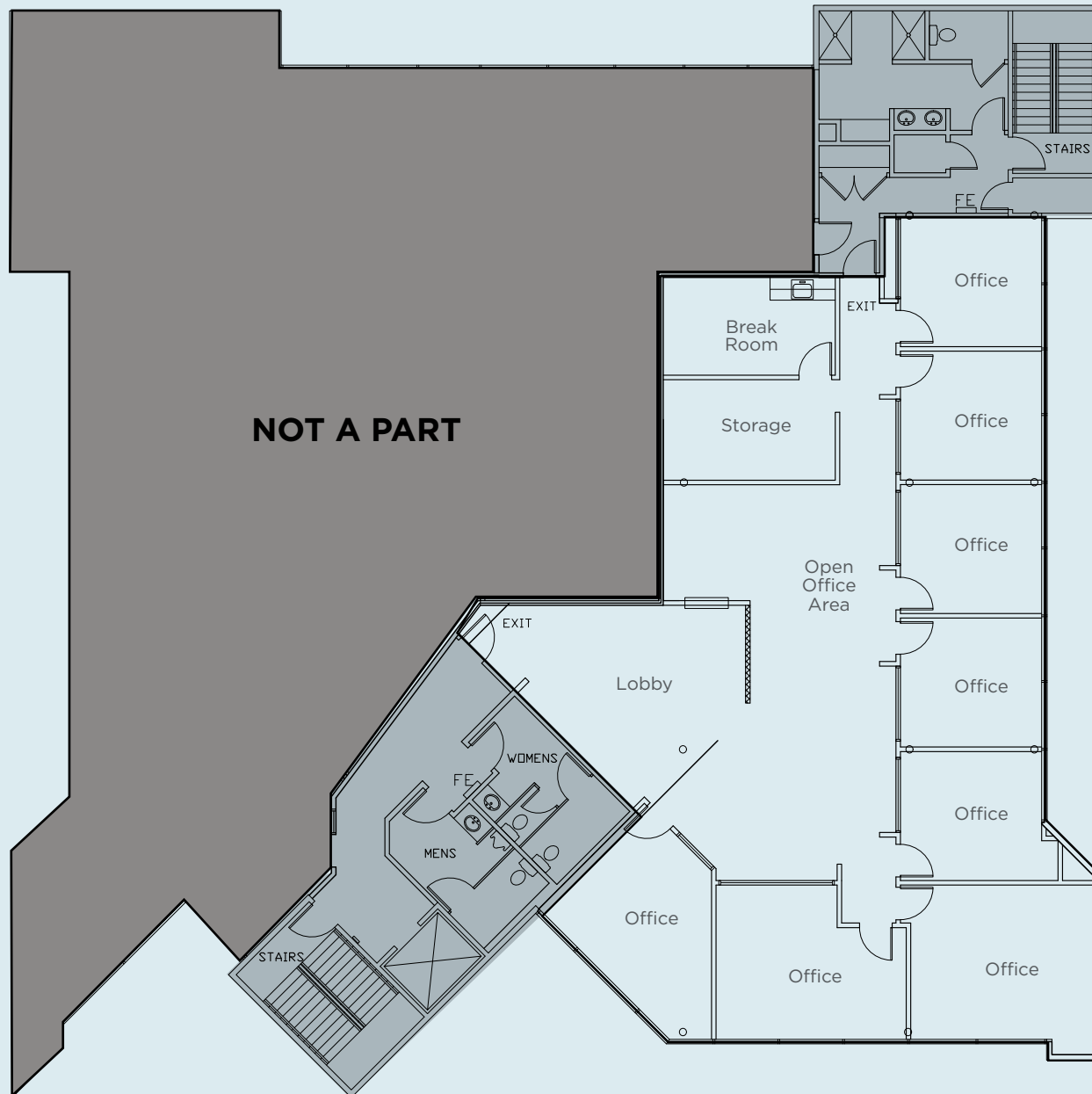
AVAILABLE: 7/1/2021



SUITE 200

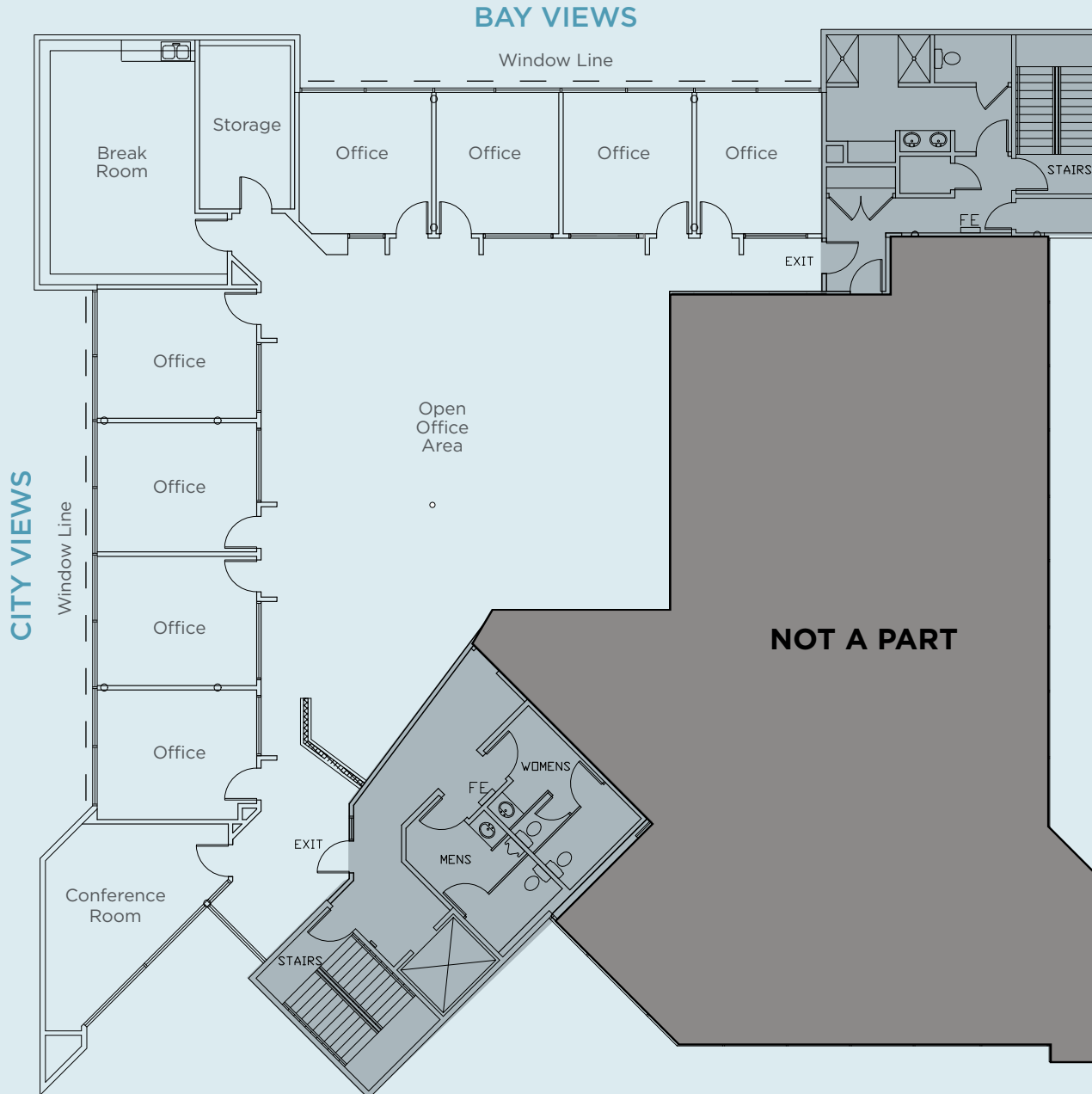
±3,507 RENTABLE SQ FT

AVAILABLE: 7/1/2021



SUITE 210

±4,874 RENTABLE SQ FT
AVAILABLE: NOW

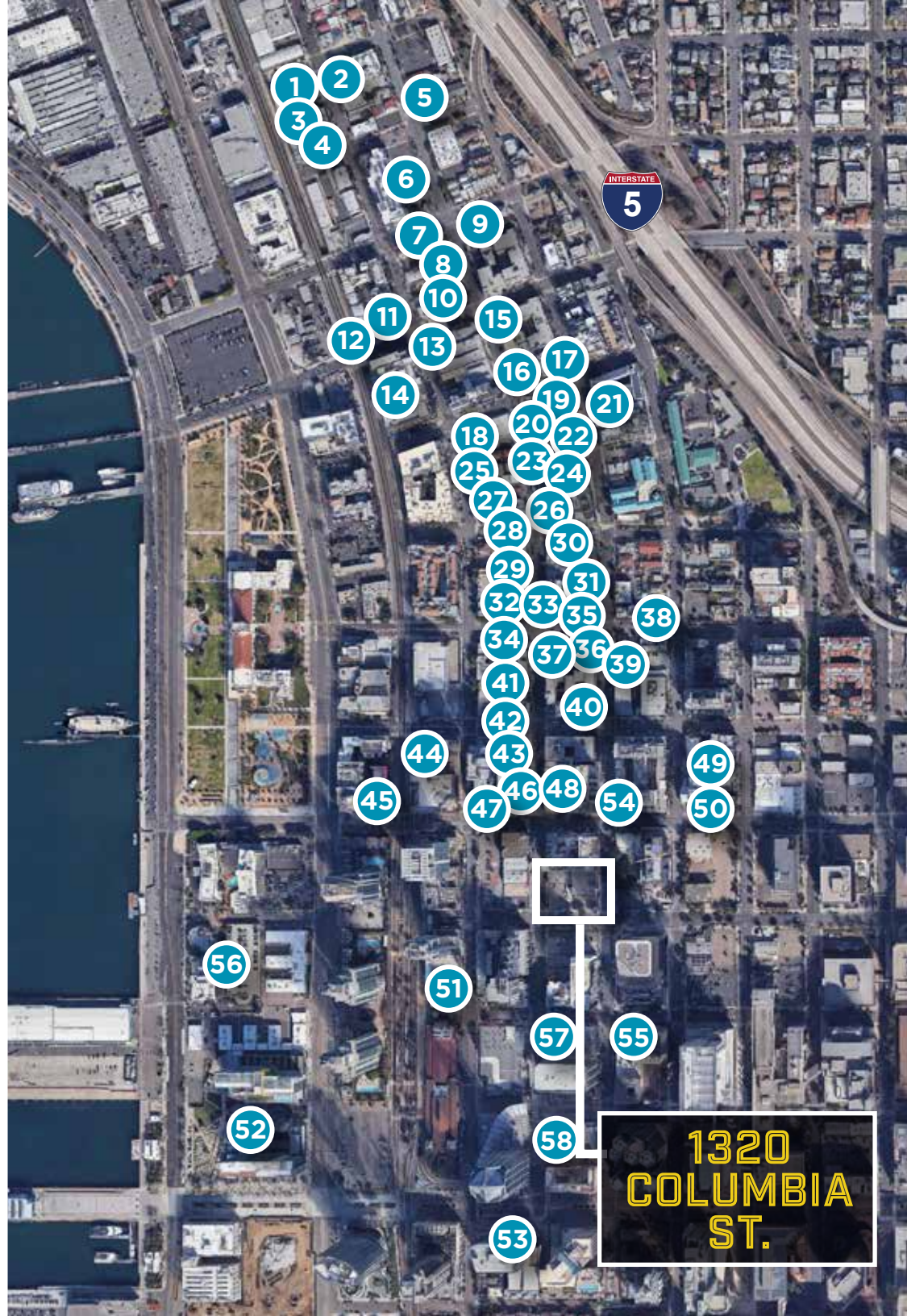




CLICK HERE FOR A
VIRTUAL TOUR



SPEC IMPROVEMENTS COMPLETE



LOCAL AMENITIES



1	Crack Shack
2	Bird Rock Coffee Roasters
3	Juniper & Ivy
4	- Herb & Eatery - Herb & Wood
5	Ballast Point Brewery
6	Pali Wine Co. Winery Tasting Room
7	Starbucks
8	Puerto La Boca Argentinian
9	Mona Lisa Italian Foods
10	Assenti's Pasta
11	Waterfront Bar & Grill
12	Rovino Rotisserie + Wine
13	Kettner Exchange
14	Bar Bodega
15	Bolt Brewery
16	Barbusa

17	M Winehouse
18	- Bencotto - Influx - Monello
19	Heartsleeves Coffee
20	Civico 1854
21	Glass Door
22	Landini's Pizzeria
23	Filippis Pizza Grotto
24	Mimmo's
25	Juice Crafters
26	Cafe Zucchero Trattoria Fatastica
27	Cafe Italia
28	Napizza
29	Prepkitchen
30	Princess Pub & Grille
31	Davanti Enoteca
32	Ironside Fish & Oyster Bar
33	Sorrento
34	Burger Lounge
35	Buon Appetito
36	Sogno Di Vino
37	Tazza D'Oro

38	Pappaleco
39	Queenstown Public House
40	Breakfast at Stephanie's
41	Isola Pizza Bar
42	Harbor Breakfast
43	Craft & Commerce
44	King and Queen Cantina
45	Shino Sushi & Kappo
46	Mexican Fiesta
47	Petrini's
48	Enoteca Style Wine Bar
49	The Kebab Shop
50	Extraordinary Desserts
51	Stone Brewery
52	Del Frisco's Double Eagle Steakhouse
53	- Copa Vida - Matisse Bistro
54	Starbucks
55	Karl Strauss
56	Ruth's Chris
57	Topside Terrace Kitchen & Bar
58	The Wild Thyme Table



LOCAL AMENITIES



- 1 San Diego Boot Camp
- 2 Fit Athletic Club & Gym
- 3 FLEXX Fitness Club
- 4 The Daily Method San Diego
- 5 PURE Spin Studio
- 6 Core Power Yoga
- 7 PURE Spin Studio



- 1 Waterfront Park
- 2 Music Box
- 3 Bar One
- 4 False Idol
- 5 Karl Strauss Brewery
- 6 Above Ash Social



- 1 Carte Hotel
- 2 Hotel Republic San Diego
- 3 DoubleTree by Hilton Hotel
- 4 Wyndham San Diego Bayside
- 5 Hilton Garden Inn San Diego Downtown/Bayside
- 6 Springhill by Marriott
- 7 InterContinental



LITTLE
ITALY

CORTEZ

1320
COLUMBIA ST.

COLUMBIA

CORE

SAN DIEGO
CITY COLLEGE

SANTE FE
DEPOT



Superior
Court

County
Court

GASLAMP

HORTON
PLAZA

EAST
VILLAGE

MARINA



ACCESSIBILITY



WALKING

DESTINATION	DISTANCE	TIME
Little Italy	0.1 mi	2 min
Santa Fe Depot	0.3 mi	5 min
San Diego Courthouse	0.3 mi	6 min
U.S. District Court	0.3 mi	7 min
Waterfront Park	0.4 mi	8 min
San Diego Civic Theatre	0.4 mi	9 min
County Clerks Office	0.4 mi	8 min



BIKING

DESTINATION	DISTANCE	TIME
Little Italy	0.1 mi	1 min
Seaport Village	0.8 mi	5 min
Balboa Park	1.3 mi	7 min
Old Town	3.9 mi	19 min



DRIVING

DESTINATION	DISTANCE	TIME
Freeway Access (I-5 N off-ramp & I-5 S on-ramp)	0.6 mi	2 min
Freeway Access (CA-163)	0.8 mi	4 min
San Diego Airport	1.9 mi	7 min
Petco Park	1.4 mi	8 min



Trolley Stop

1320 COLUMBIA ST.

SUITE 210 | SAN DIEGO | CA 92101

MIKE NOVKOV

+1 858 546 5412
mike.novkov@cushwake.com
LIC #01890388

PHILIP ROBERTS

+1 858 558 5651
philip.roberts@cushwake.com
LIC #01908296

FRANK WRIGHT

+1 858 546 5404
frank.wright@cushwake.com
LIC #01478399



4747 Executive Drive, Suite 900 | San Diego, CA 92121 | main +1 858 546 5400 | fax +1 858 630 6320 | [cushmanwakefield.com](https://www.cushmanwakefield.com)

[View Site Specific COVID-19 Prevention Plan](#)