

Available
Commercial Condo for Lease



Atherton Park

218-C East Tremont Avenue | Charlotte, NC 28203

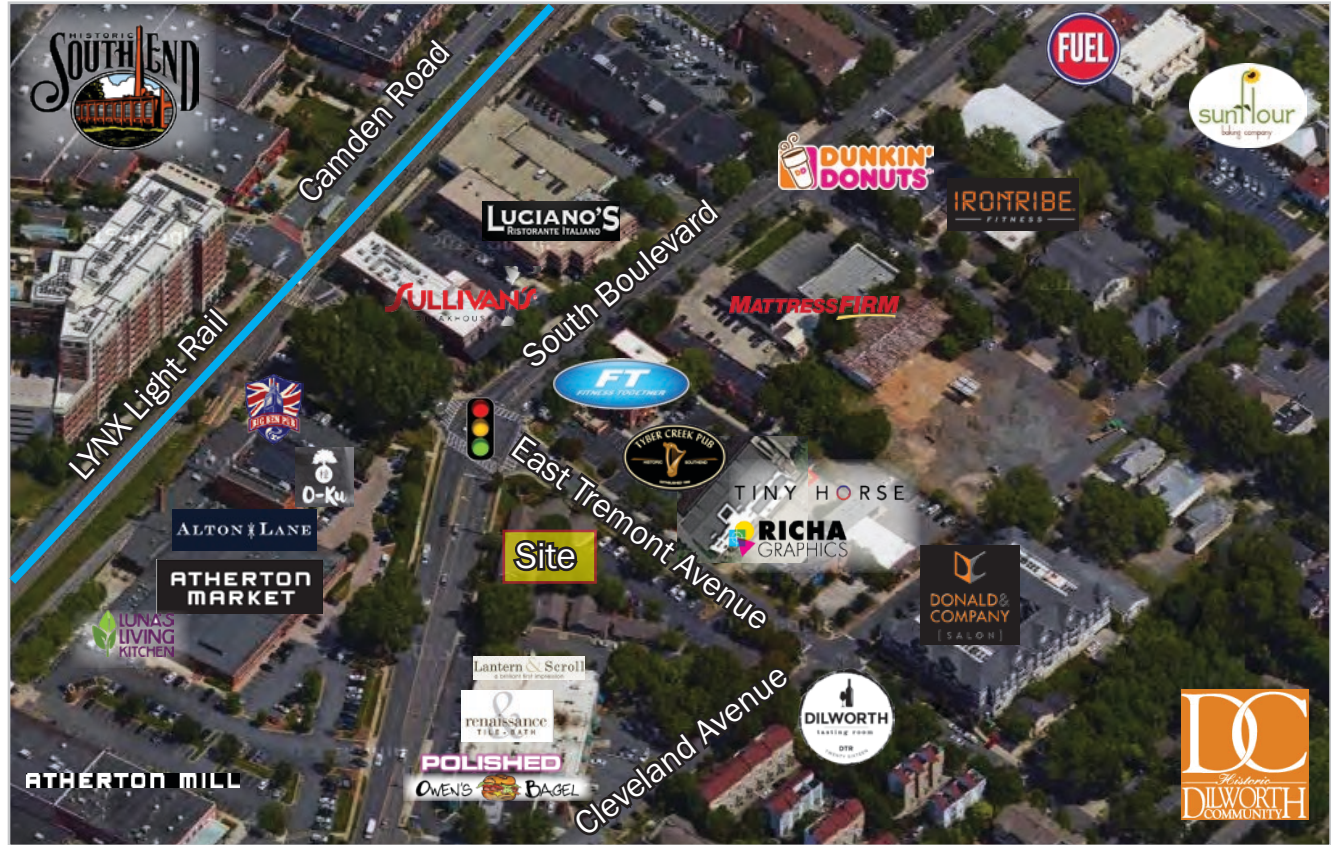


ABOUT

Located in South End, this +/- 1,240SF Commercial Condo is for lease at the corner of heavily traveled South Boulevard and East Tremont Avenue. This office condo offers a reception area, private office space, a conference room and kitchenette. It is located in close proximity to numerous shops and restaurants as well as the Lynx Light Rail.

SITE ATTRIBUTES

- +/- 1,240 SF
- Parcel ID: 12106607
- Zoning: O-2
- Ample Onsite Parking
- Lease Rate: \$24/SF Modified Gross



Demographics	1 Mile	2 Mile	3 Mile
Total Population	16,227	51,521	103,492
Daytime Employees	19,697	132,920	176,085
Average HH Income	\$94,172	\$98,159	\$93,611

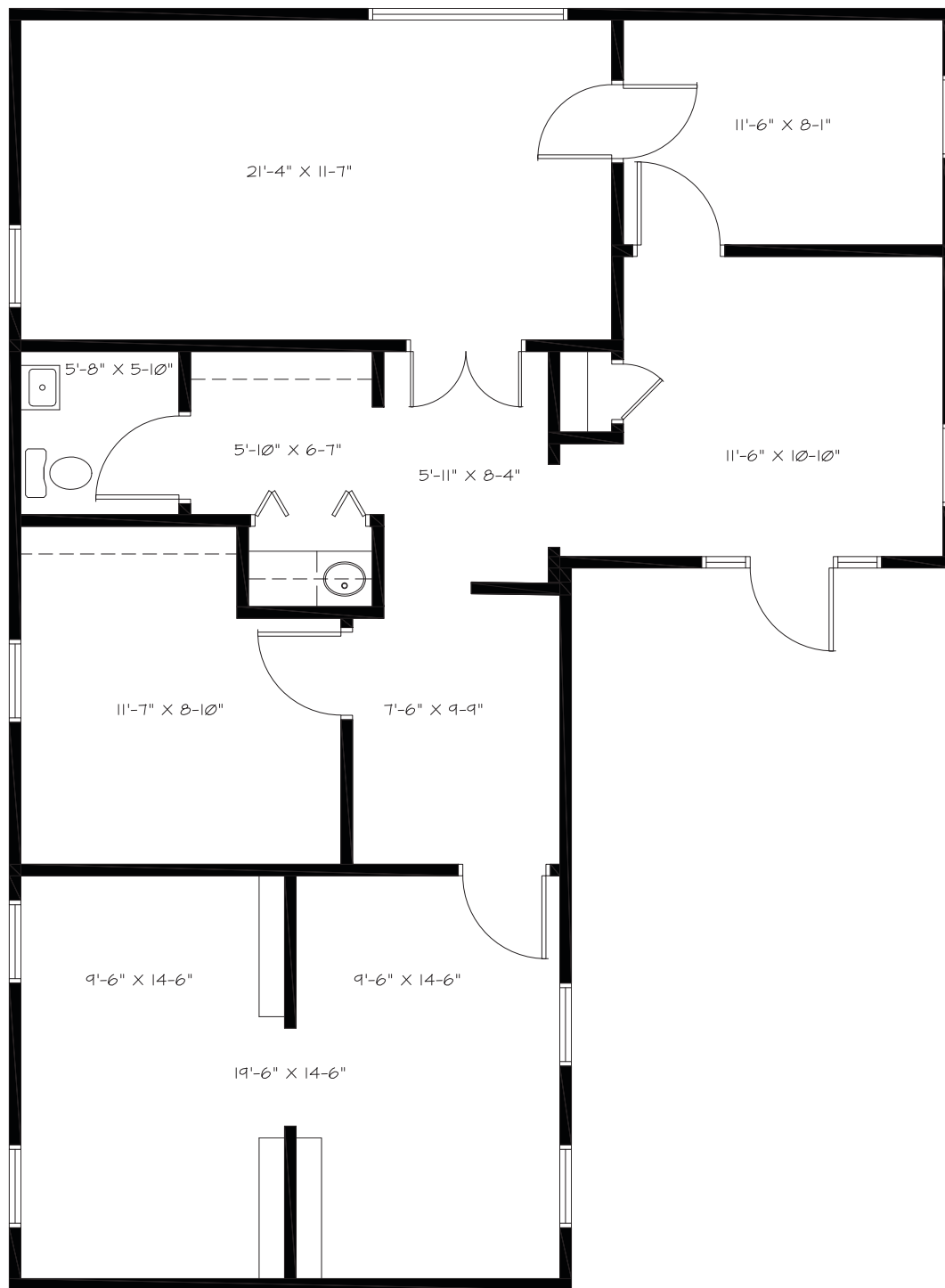
Traffic Counts:

South Boulevard - Est 27, 200 VPD

East Tremont Avenue - Est. 6,088 VPD



FLOOR PLAN







SOUTH END

Immediately south of Uptown, Charlotte's South End is a mix of old and new, contemporary and retro. This thriving community has seen a boom in growth over the past decade and now has more than 300 shops and restaurants and 2,400 housing units. South End offers historic charm with modern day conveniences.

www.historicsouthend.com



JOSH BEAVER | The Nichols Company | (O) 704.373.9797 | (F) 704.373.9798
Josh@thenicholscompany.com | www.thenicholscompany.com | 1204 Central Avenue Suite 201, Charlotte, NC 28204