

New Construction 10th Street Medical/ Professional/ Retail Building

205 10th Street NE
Auburn, WA 98002

On site security guard

Professional/medical office
building

Great location with easy access
to Hwy 167 & Hwy 18

Suite 117 & 119 - 3,000 SF

Suite 101 - 1,600 SF

Suite 104 - 1,600 SF

Asking rates: \$24.00-\$27.00 +
NNN (\$6.00)

Parking 5+/-1000

Established medical park;
current tenants include
Franciscan Healthcare, BECU &
Edward Jones



Front Entrance



Contact

Joel Shabel
253.722.1406
jshabel@kiddermathews.com

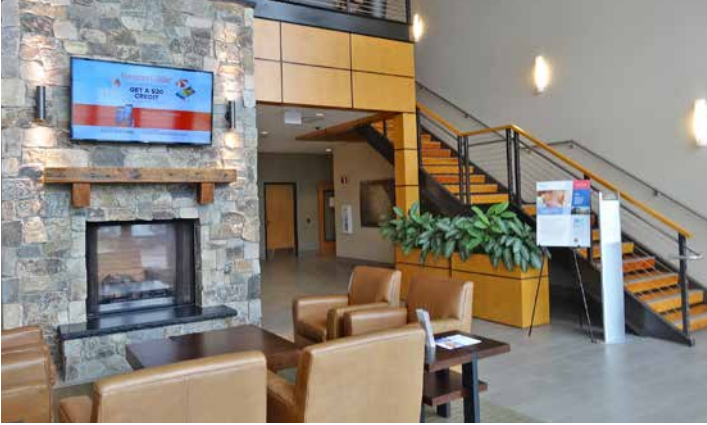
10th Street Medical/Professional/Retail Building



Contact

Joel Shabel
253.722.1406
jshabel@kiddermathews.com

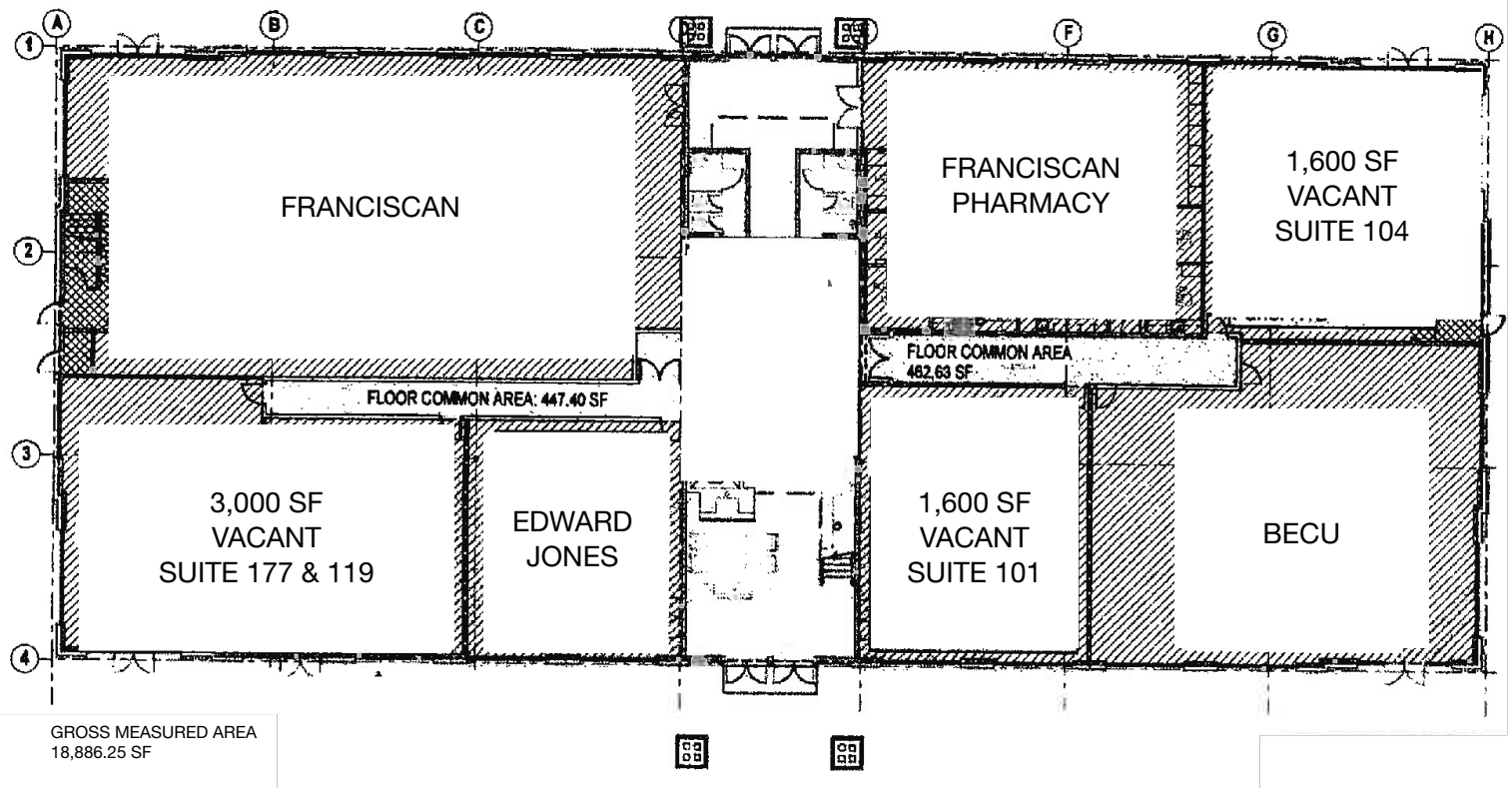
10th Street Medical/Professional/Retail Building



Contact

Joel Shabel
253.722.1406
jshabel@kiddermathews.com

10th Street Medical/Professional/Retail Building



Contact

Joel Shabel
253.722.1406
jshabel@kiddermathews.com