

FOR LEASE

**Entire Medical Building Available  
Adjacent to St. John's Hospital  
1010 North Broadway  
Yonkers, New York  
12,455 SF**



## PROPERTY HIGHLIGHTS

- Adjacent to St. John's Riverside Hospital
- Proximate to Prime Retail, Restaurants & Services
- Poised to Benefit from Significant Area Growth & Revitalization
- 1.67 acres / OL District - Office Building & Research Labs

For more information, please contact:

**MATTHEW LISK**  
+1 914 305 9303  
[matthew.lisk@cushwake.com](mailto:matthew.lisk@cushwake.com)

## 1010 North Broadway

<b>Space:</b>	Main Building	10,385 SF
	Carriage House	2,070 SF
	<i>Total</i>	<i>12,455 SF</i>
<b>Asking Rent:</b>	Negotiable	
<b>Parking:</b>	5.1 / 1,000	
<b>Available:</b>	Immediate	

Cushman & Wakefield of  
Connecticut, Inc.  
44 South Broadway, 1<sup>st</sup> Floor  
White Plains, NY 10601



**CUSHMAN &  
WAKEFIELD**

[cushmanwakefield.com](http://cushmanwakefield.com)

Entire Medical Building Available  
Adjacent to St. John's Hospital  
1010 North Broadway  
Yonkers, New York  
12,455 SF

FOR LEASE

## LOCAL HIGHLIGHTS



- 1 The Boyce Thompson Center** — 85,000 SF of premier office space for businesses & medical practices including WESTMED, St. John's Riverside Hospital, ColumbiaDoctors and others. Property also includes retail stores, banking and restaurants including Starbucks, Fresh & Co. and others.
- 2 South Westchester Executive Park** — 140 acres with 758,000 SF of office, flex and industrial Space
- 3 Courtyard by Marriott**
- 4 Hampton Inn & Suites**
- 5 Elizabeth Seton Children's Center**
- 6 St. John's Hospital & Cochran School of Nursing**
- 7 River Tides at Greystone** — 330-unit rental complex built in 2017
- 8 1177@Greystone** — 55-unit rental complex built in 2018
- 9 Stratus at Hudson** — 74-unit rental complex built in 2019



CUSHMAN &  
WAKEFIELD

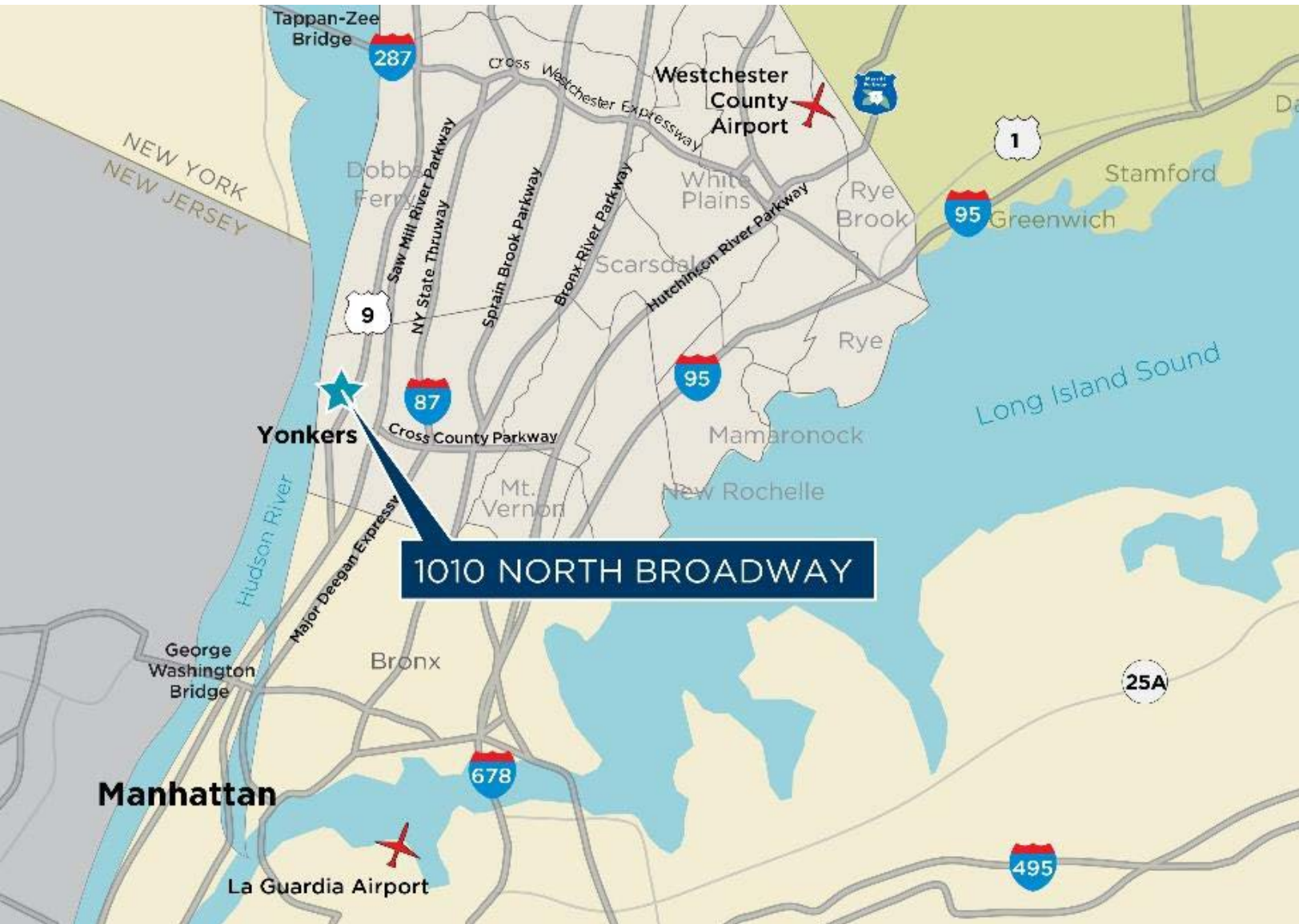
cushmanwakefield.com



Entire Medical Building Available  
Adjacent to St. John's Hospital  
1010 North Broadway  
Yonkers, New York  
12,455 SF

**FOR LEASE**

**LOCATION MAP**



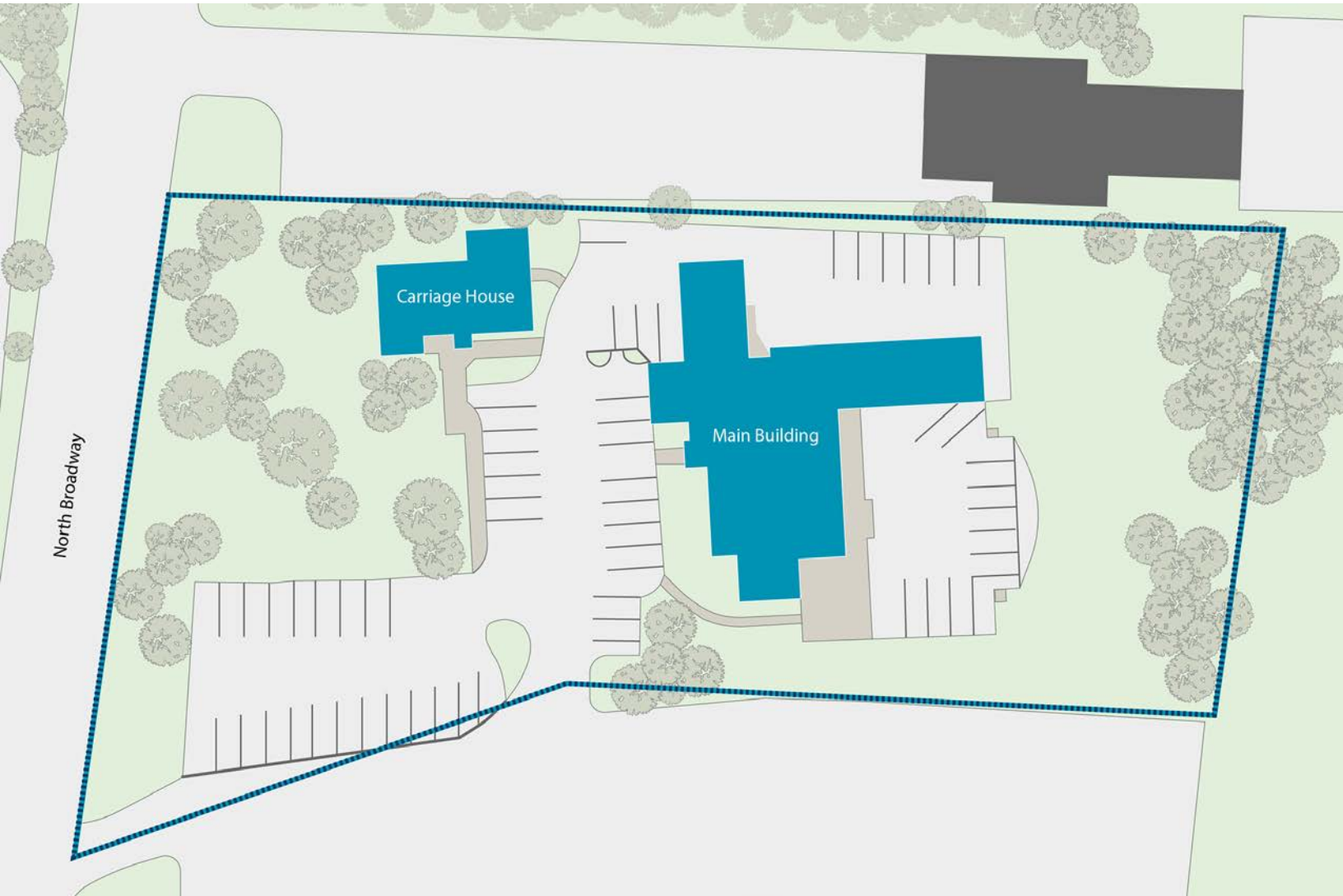
**CUSHMAN &  
WAKEFIELD**

[cushmanwakefield.com](http://cushmanwakefield.com)

Entire Medical Building Available  
Adjacent to St. John's Hospital  
1010 North Broadway  
Yonkers, New York  
12,455 SF

**FOR LEASE**

**SITE PLAN**



**CUSHMAN &  
WAKEFIELD**

[cushmanwakefield.com](http://cushmanwakefield.com)

©2020 Cushman & Wakefield. All rights reserved. The information contained in this communication is strictly confidential. This information has been obtained from sources believed to be reliable but has not been verified. NO WARRANTY OR REPRESENTATION, EXPRESS OR IMPLIED, IS MADE AS TO THE CONDITION OF THE PROPERTY (OR PROPERTIES) REFERENCED HEREIN OR AS TO THE ACCURACY OR COMPLETENESS OF THE INFORMATION CONTAINED HEREIN, AND SAME IS SUBMITTED SUBJECT TO ERRORS, OMISSIONS, CHANGE OF PRICE, RENTAL OR OTHER CONDITIONS, WITHDRAWAL WITHOUT NOTICE, AND TO ANY SPECIAL LISTING CONDITIONS IMPOSED BY THE PROPERTY OWNER(S). ANY PROJECTIONS, OPINIONS OR ESTIMATES ARE SUBJECT TO UNCERTAINTY AND DO NOT SIGNIFY CURRENT OR FUTURE PROPERTY PERFORMANCE.