

# Harbor Heights - Office/Retail Building

7116 Stinson Gig Harbor, Washington 98335

up to  
**1,329**  
square feet  
available

*call Tim Johnson*

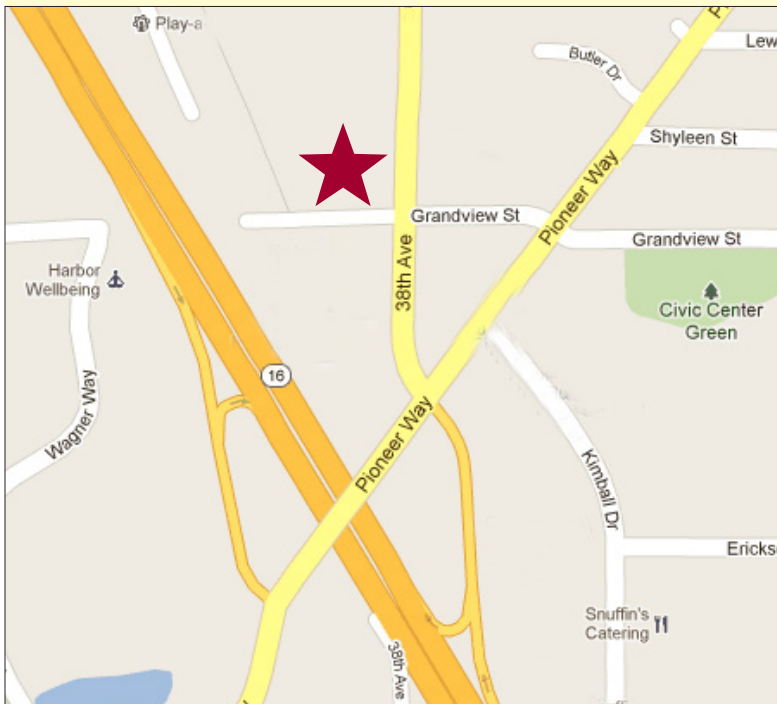
253.209.9999

*Now Leasing*



JOHNSON  
COMMERCIAL

*A blend of location, exposure and efficiency*



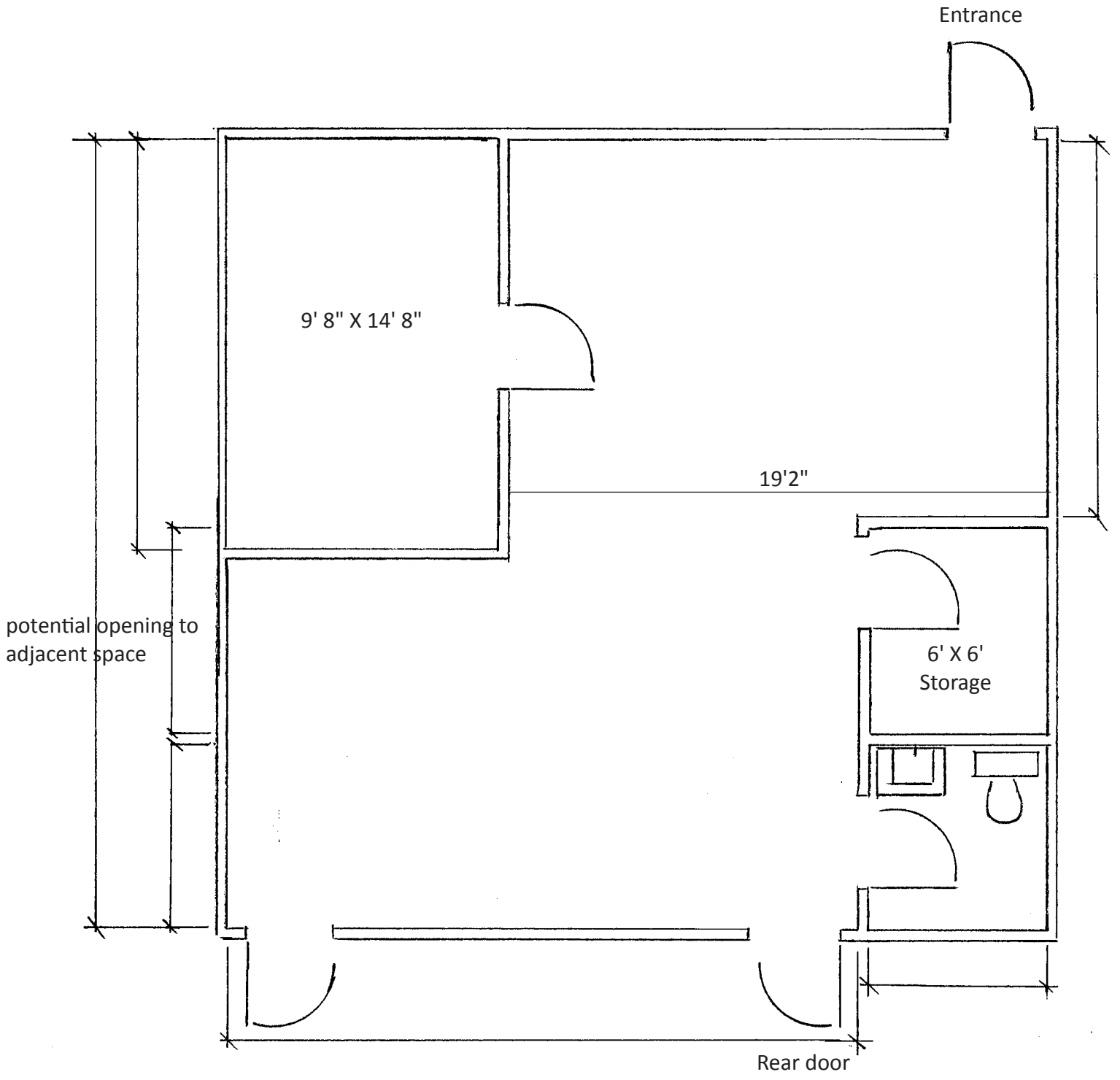
- Up to 1,329 sf available now
- 2 upper level spaces
- #207 - 796sf - #208 - 533sf
- Retail or Office
- Demographics available
- SR16 exposure
- Good signage
- Ample Parking

Base Rent: \$12.00 psf/year (modified gross)

*For leasing information call Tim Johnson at 253.209.9999*

please visit [www.johnson-commercial.com](http://www.johnson-commercial.com)

Suite 207 796 square feet



Suite 208 533 square feet

