



# 1900 116th Ave NE, Suite 200



**Sales Price: \$1,050,000**

Suite 200: 1,768 SF commercial medical/office condominium

Rare owner/user opportunity along Bellevue's 116th Medical Corridor, including highly visible signage along 116th Avenue NE

Existing medical build-out, including plumbing, or available plumbing, in all exam rooms

Flexible BR-MO (Bel-Red Medical Office) zoning allows for a variety of uses

Available immediately

[kiddermathews.com](http://kiddermathews.com)

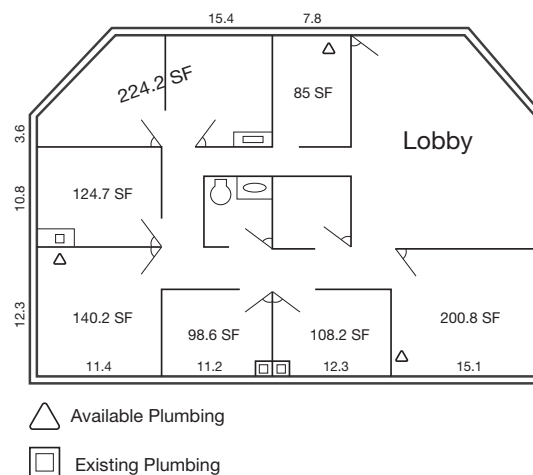
## Contact

**Dan Harden**  
425.450.1135  
[dharden@kiddermathews.com](mailto:dharden@kiddermathews.com)

**James Leptich**  
425.450.1159  
[jleptich@kiddermathews.com](mailto:jleptich@kiddermathews.com)

# For Sale

1900 116th Ave NE, Suite 200, Bellevue



## BUILDING FACT SHEET

Location	1900 116th Ave NE, Suite 200
Year Built	1979; Unit renovated 2014
Building Size	- 7,764 SF Total (per King County) - 1st Floor: 4,520 SF - 2nd Floor: 3,244 SF
Space Available For Sale	Unit 200: 1,768 SF
Interior Build-Out	Dedicated reception, Eight (8) exam rooms, kitchen, storage and unisex restroom. All exam rooms have available plumbing.

Parking	All parking is nonexclusive, and in common with other building ownership (31 stalls)
Construction	Wood frame
Zoning	Bel-Red Medical-Office (BR-MO)
Expenses/Taxes	2016 Expenses: \$1,267/month 2017 Taxes: \$5,408.32/year
Sale Price/PSF	\$1,050,000/\$594
Commission	2.5% of sale price to procuring Broker

## Contact

**Dan Harden**

425.450.1135

dharden@kiddermathews.com

**James Leptich**

425.450.1159

jleptich@kiddermathews.com

[kiddermathews.com](http://kiddermathews.com)

This information supplied herein is from sources we deem reliable. It is provided without any representation, warranty or guarantee, expressed or implied as to its accuracy. Prospective Buyer or Tenant should conduct an independent investigation and verification of all matters deemed to be material, including, but not limited to, statements of income and expenses. Consult your attorney, accountant, or other professional advisor.

