

PHOENIX
GOODYEAR
AIRPORT

MC 85

±5.0 ACRES FOR SALE
AIRPORT COMMERCECENTER

LA COMETA

BULLARD AVENUE

LA ESTRELLA

BROADWAY ROAD

Airport CommerceCenter

SWC of La Estrella & La Cometa | Goodyear, Arizona

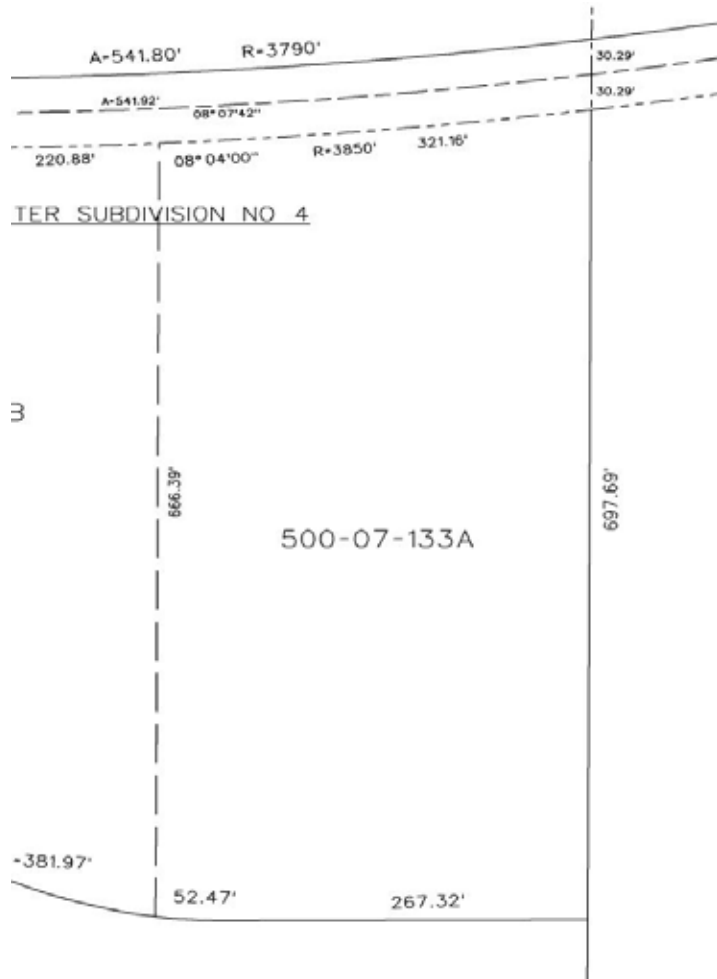
Andy Cloud
Managing Director
+1 602 224 4419
andy.cloud@cushwake.com

2555 E Camelback Rd Ste 400
Phoenix, Arizona 85016
p +1 602 954 9000
f +1 602 253 0528
cushmanwakefield.com



Airport Commerce Center SWC of La Estrella & La Cometa | Goodyear, Arizona

Maricopa County Map



Site Features:

- Approximately Five (5) Acres
- Located just south of State Route 85 and 3 1/2 miles south of Interstate 10
- +/- 1 mile from Phoenix Goodyear Airport
- Utilities: Water and sewer provided by City of Goodyear
- Assessors Parcel Number: 500-07-133A
- Zoning: I-2 zoning, City of Goodyear
- Electrical Service: APS
- Airport Commerce Center Neighbors include: Poore Bros., Del Monte Foods, Planned Microsoft facility
- Sale Price: \$1,184,000.00



For more information, please contact:

Andy Cloud
Managing Director
+1 602 224 4419
andy.cloud@cushmanwake.com

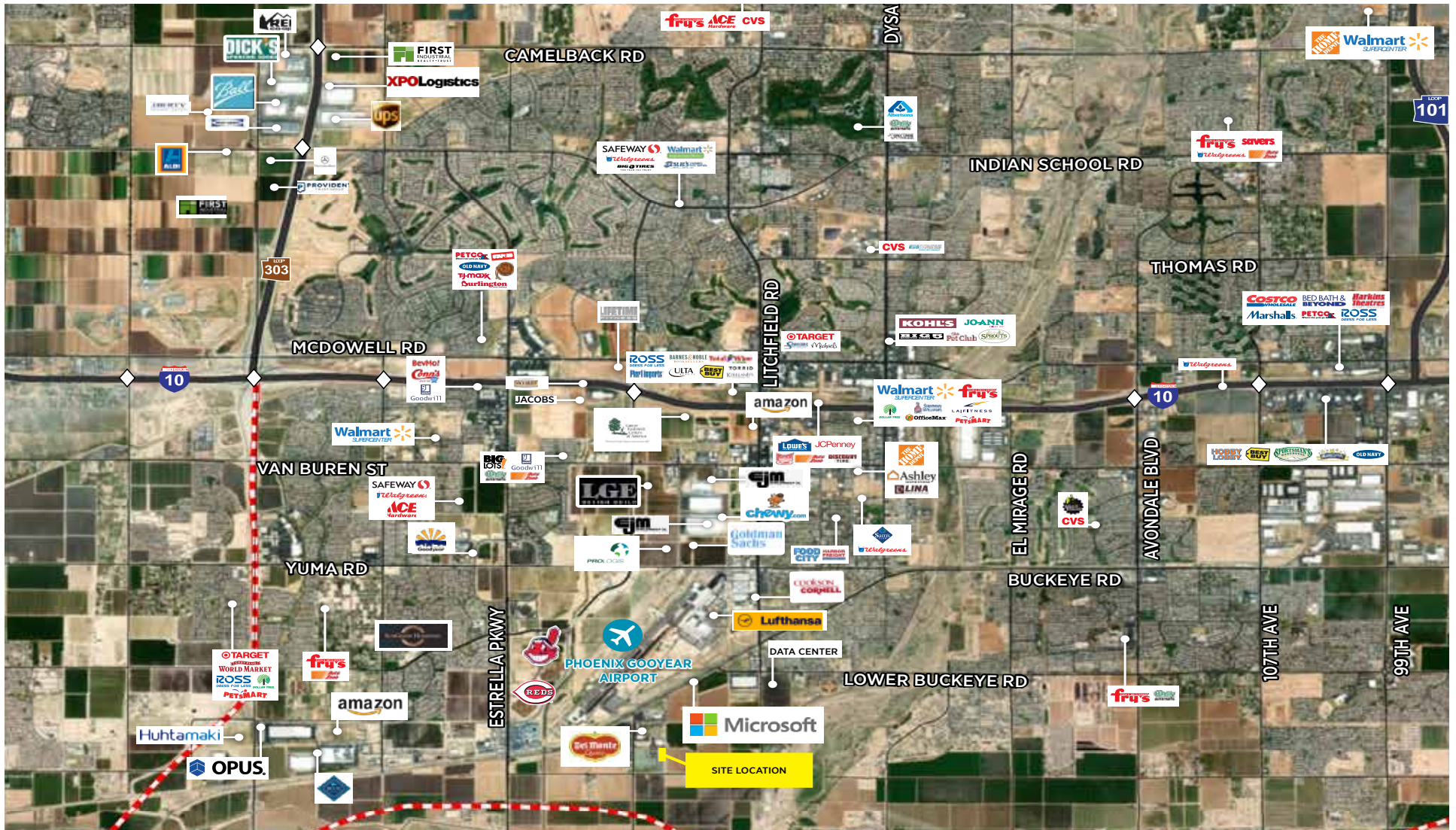
2555 E. Camelback Rd, Suite 400
Phoenix, Arizona 85016
ph: +1 602 954 9000
fx: +1 602 253 0528

cushmanwakefield.com



Airport CommerceCenter

SWC of La Estrella & La Cometa | Goodyear, Arizona



For more information, please contact:

Andy Cloud
 Managing Director
 +1 602 224 4419
 andy.cloud@cushmanwake.com

2555 E. Camelback Rd, Suite 400
 Phoenix, Arizona 85016
 ph: +1 602 954 9000
 fx: +1 602 253 0528

cushmanwakefield.com

