

THE

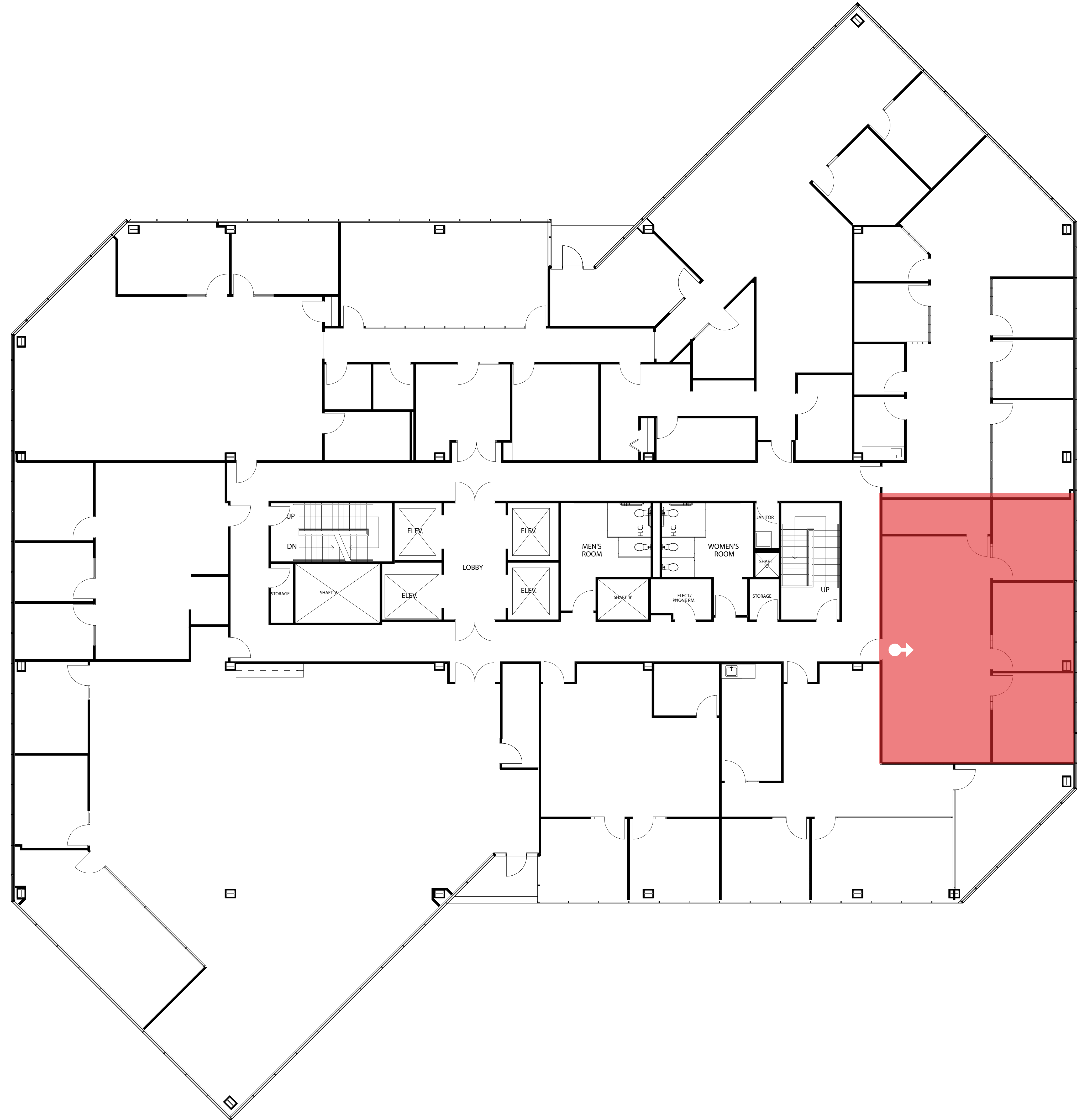
CROSSROADS

SAN MATEO, CA

1875 S. Grant Floor 9

Suite 920
±1,410 SF

- 3 private offices
- 1 IT / storage room



MARK BODIE
mark.bodie@am.jll.com
650.480.2212
Lic #01941415

TOSS VALLENTINE
toss.valentine@am.jll.com
650.480.2133
Lic #01742629

CLARKE FUNKHOUSER
clarke.funkhouser@cushwake.com
650.401.2124
Lic #01252763