

±6,239 SF INDUSTRIAL BLDG. FOR SALE/LEASE

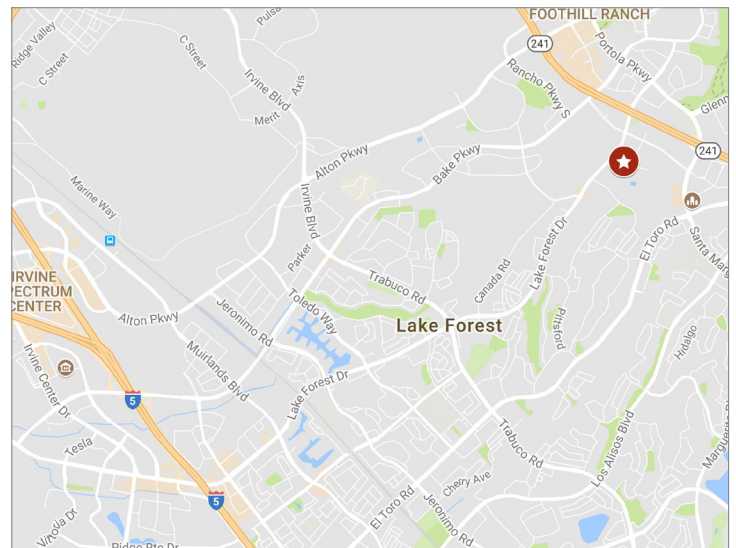
26786 VISTA TERRACE

LAKE FOREST, CA 92630



LISTING DATA

- ±6,239 SF 2-story industrial building
- ±2,400 SF of office space
- ±5,184 SF lot
- Corner location
- 4 to 7 offices and open area
- Warehouse restroom
- New roof and completely refurbished interior
- Warehouse racking & fork lift available
- 3:1000 parking ratio
- 1 GL door
- 22' clear height
- 400 amps
- Immediate access to the 241 FTC



Mark Jerue

CalBRE 01073399
949.790.3121

mjerue@leeirvine.com

Craig Fitterer

CalBRE 01246929
949.790.3123

cfitterer@leeirvine.com

BJ Fell

CalBRE 01929179
949.790.3144

bfell@leeirvine.com

Brandon Howe

CalBRE 02007676
949.790.3190

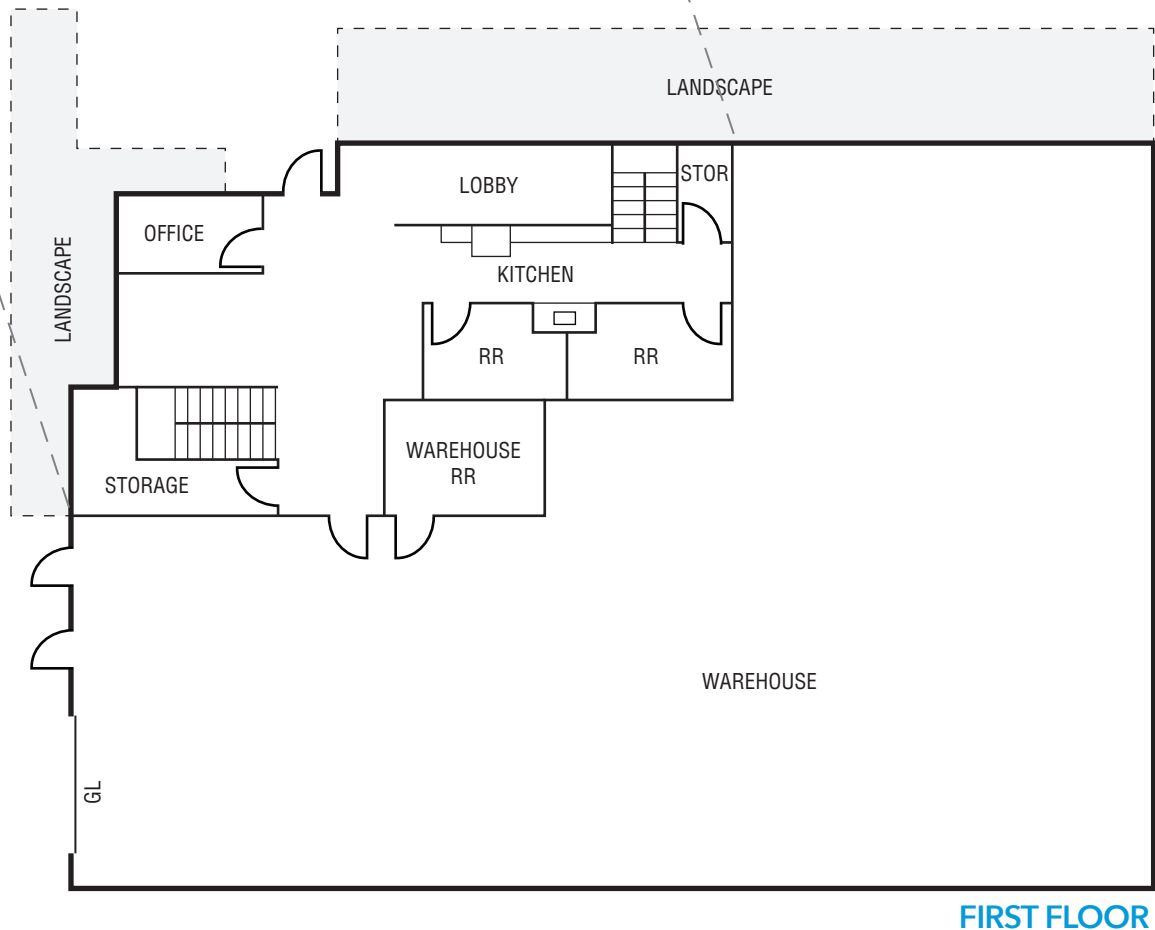
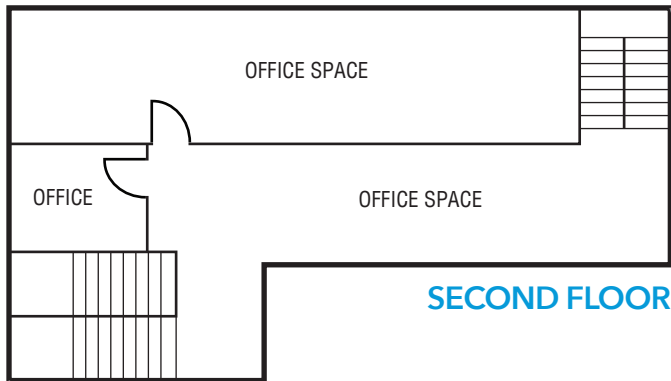
bhowe@leeirvine.com

All information furnished regarding property for sale, rental or financing is from sources deemed reliable, but no warranty or representation is made to the accuracy thereof and same is submitted to errors, omissions, change of price, rental or other conditions prior to sale, lease or financing or withdrawal without notice. No liability of any kind is to be imposed on the broker herein.

±6,239 SF INDUSTRIAL BLDG. FOR SALE/LEASE

26786 VISTA TERRACE

LAKE FOREST, CA 92630



Mark Jerue
CalBRE 01073399
949.790.3121
mjerue@leeirvine.com

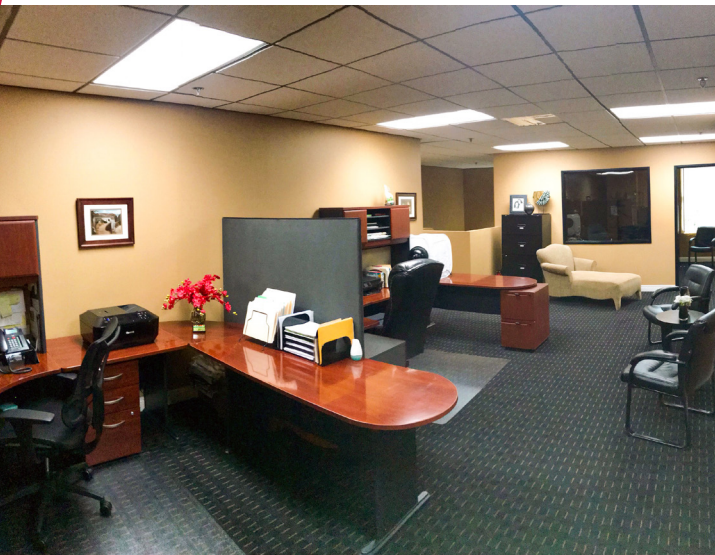
Craig Fitterer
CalBRE 01246929
949.790.3123
cfitterer@leeirvine.com

BJ Fell
CalBRE 01929179
949.790.3144
bfell@leeirvine.com

Brandon Howe
CalBRE 02007676
949.790.3190
bhowe@leeirvine.com

All information furnished regarding property for sale, rental or financing is from sources deemed reliable, but no warranty or representation is made to the accuracy thereof and same is submitted to errors, omissions, change of price, rental or other conditions prior to sale, lease or financing or withdrawal without notice. No liability of any kind is to be imposed on the broker herein.

±6,239 SF INDUSTRIAL BLDG. FOR SALE/LEASE
26786 VISTA TERRACE
LAKE FOREST, CA 92630



Mark Jerue
CalBRE 01073399
949.790.3121
mjerue@leeirvine.com

Craig Fitterer
CalBRE 01246929
949.790.3123
cfitterer@leeirvine.com

BJ Fell
CalBRE 01929179
949.790.3144
bfell@leeirvine.com

Brandon Howe
CalBRE 02007676
949.790.3190
bhowe@leeirvine.com

All information furnished regarding property for sale, rental or financing is from sources deemed reliable, but no warranty or representation is made to the accuracy thereof and same is submitted to errors, omissions, change of price, rental or other conditions prior to sale, lease or financing or withdrawal without notice. No liability of any kind is to be imposed on the broker herein.