



2240 FOR LEASE
CLEVELAND AVENUE, NATIONAL CITY

PERRY RE
COMMERCIAL
EXPERIENCE PLUS KNOWLEDGE YIELDS RESULTS

2240 FOR LEASE

CLEVELAND AVENUE



Located 7 miles from Downtown San Diego and two blocks from Interstate 5 on ramps, **2240 Cleveland Avenue** also has freeway access to Highway 54. The property features gated and secured parking on the ground floor with in-place work stations, conference rooms, a break room, and outdoor patios.

Space Available: 6,994 to 14,027 RSF

Rental Rate: \$2.50 per RSF
Plus Utilities & Janitorial

Current Availabilities:

Suite	Size (RSF)	Rental Rate
2 nd & 3 rd Floor	14,027	\$2.50
2 nd Floor	7,033	\$2.50
3 rd Floor	6,994	\$2.50

*For More Information,
Please Contact:*

Linville C. Martin

office 619 531 1643

cell 619 277 3077

lin@perrycommre.com

License #: 01173686

PERRY RE
COMMERCIAL

EXPERIENCE PLUS KNOWLEDGE YIELDS RESULTS

Copyright © Perry

Although we have no reason to doubt the accuracy of the enclosed information, we can not guarantee it.



2240 FOR LEASE

CLEVELAND AVENUE

Additional building amenities include:

PLUG AND PLAY

- 60 spaces/offices with room to expand
- Fully furnished
- Phones for each desk
- Fully wired with CAT 5

DATA ROOM

- Back up battery & generator
- Separate climate control and HVAC units
- Secure area

FREE PARKING

- 37 spaces (18 covered/secured)
- Open space parking lot for balance
- More than 30 spaces available within two blocks

Use of Fully Equipped Kitchen

Use of Outdoor Dining Area

Use of Horseshoe Area

PERRY RE
COMMERCIAL

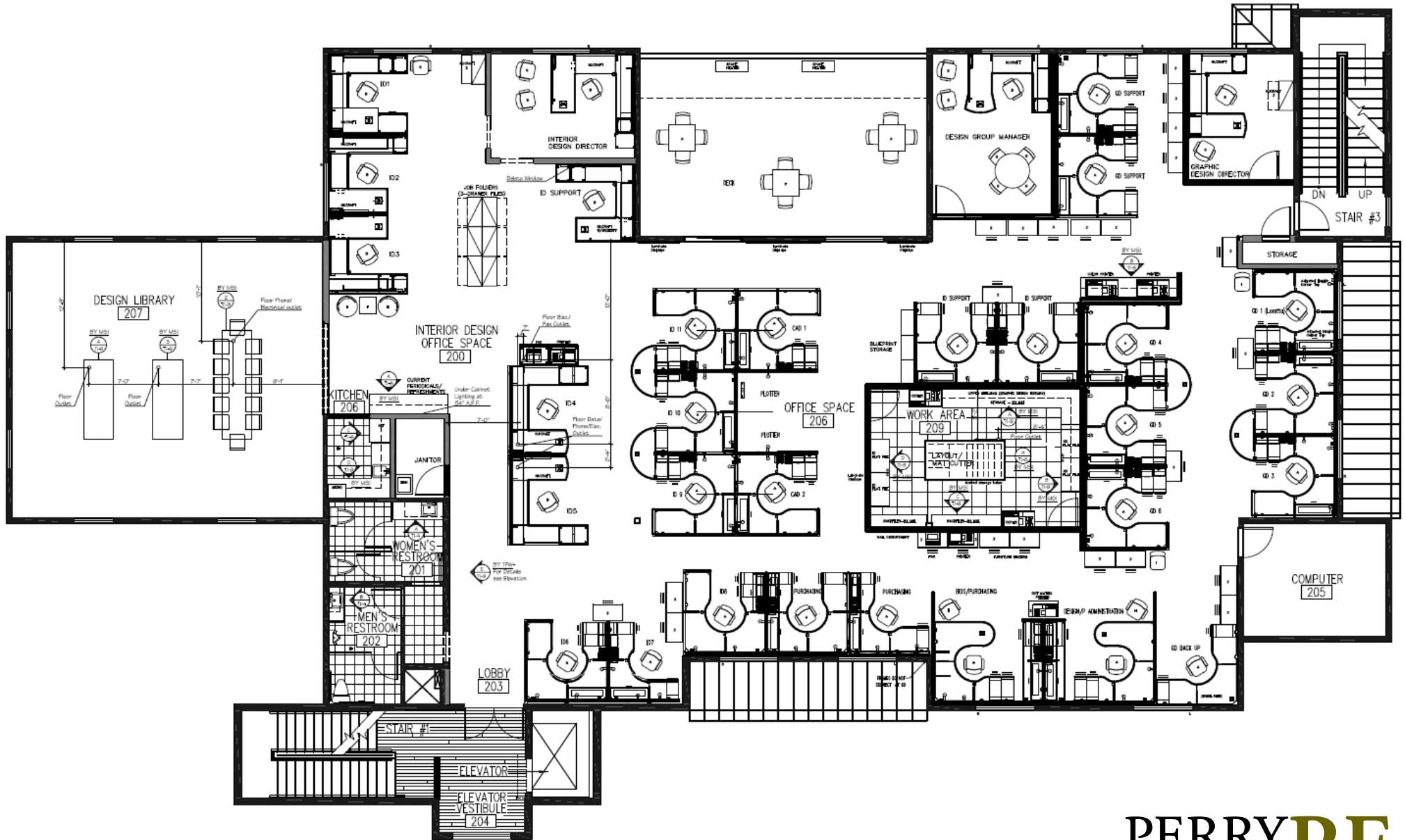
EXPERIENCE PLUS KNOWLEDGE YIELDS RESULTS

Although we have no reason to doubt the accuracy of the enclosed information, we can not guarantee it.



SUITE 200 7,033 RSF

2240 FOR LEASE
CLEVELAND AVENUE

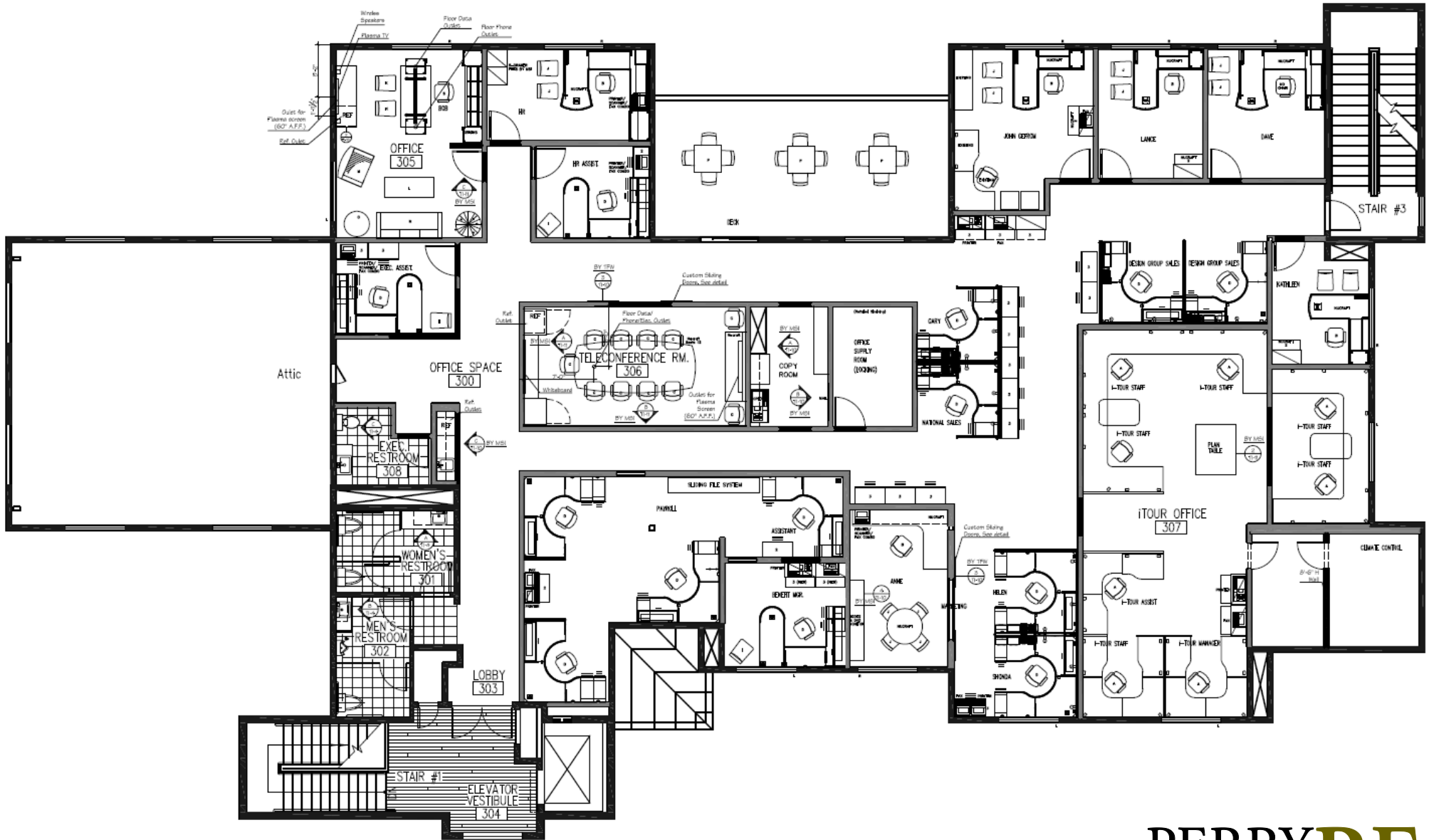


Although we have no reason to doubt the accuracy of the enclosed information, we can not guarantee it.

PERRY RE
COMMERCIAL
EXPERIENCE PLUS KNOWLEDGE YIELDS RESULTS

SUITE 300 6,994 RSF

2240 FOR LEASE
CLEVELAND AVENUE



Although we have no reason to doubt the accuracy of the enclosed information, we can not guarantee it.

PERRY RE
COMMERCIAL
EXPERIENCE PLUS KNOWLEDGE YIELDS RESULTS



Scan the QR Code with your smartphone for a virtual tour and additional photographs.



For More Information, Please Contact:

Linville C. Martin

office 619 531 1643

cell 619 277 3077

lin@perrycommre.com

License #: 01173686

Bradford Perry

office 619 531 1643

cell 619 990 1643

brad@perrycommre.com

License #: 01204960

PERRY
COMMERCIAL RE

EXPERIENCE PLUS KNOWLEDGE YIELDS RESULTS

Although we have no reason to doubt the accuracy of the enclosed information, we can not guarantee it.