

# SAN TAN CENTER

19011 EAST SAN TAN BLVD | QUEEN CREEK, AZ



## Retail Suites For Lease

- Available Suites From  $\pm 1,200$  to 2,400 SF
- Located at San Tan Blvd & Sossaman Rd
- Part of a  $\pm 12,000$  SF, Multi-Tenant Retail Center
- Parcel: 304-89-078N
- Excellent Parking Ratio & Demographics
- 2002 Construction



Trent Rustan  
D: 480.966.5155  
M: 602.550.0709  
trustan@cpiaz.com

Josh Gosnell  
D: 480.621.4022  
M: 602.315.9606  
jgosnell@cpiaz.cim



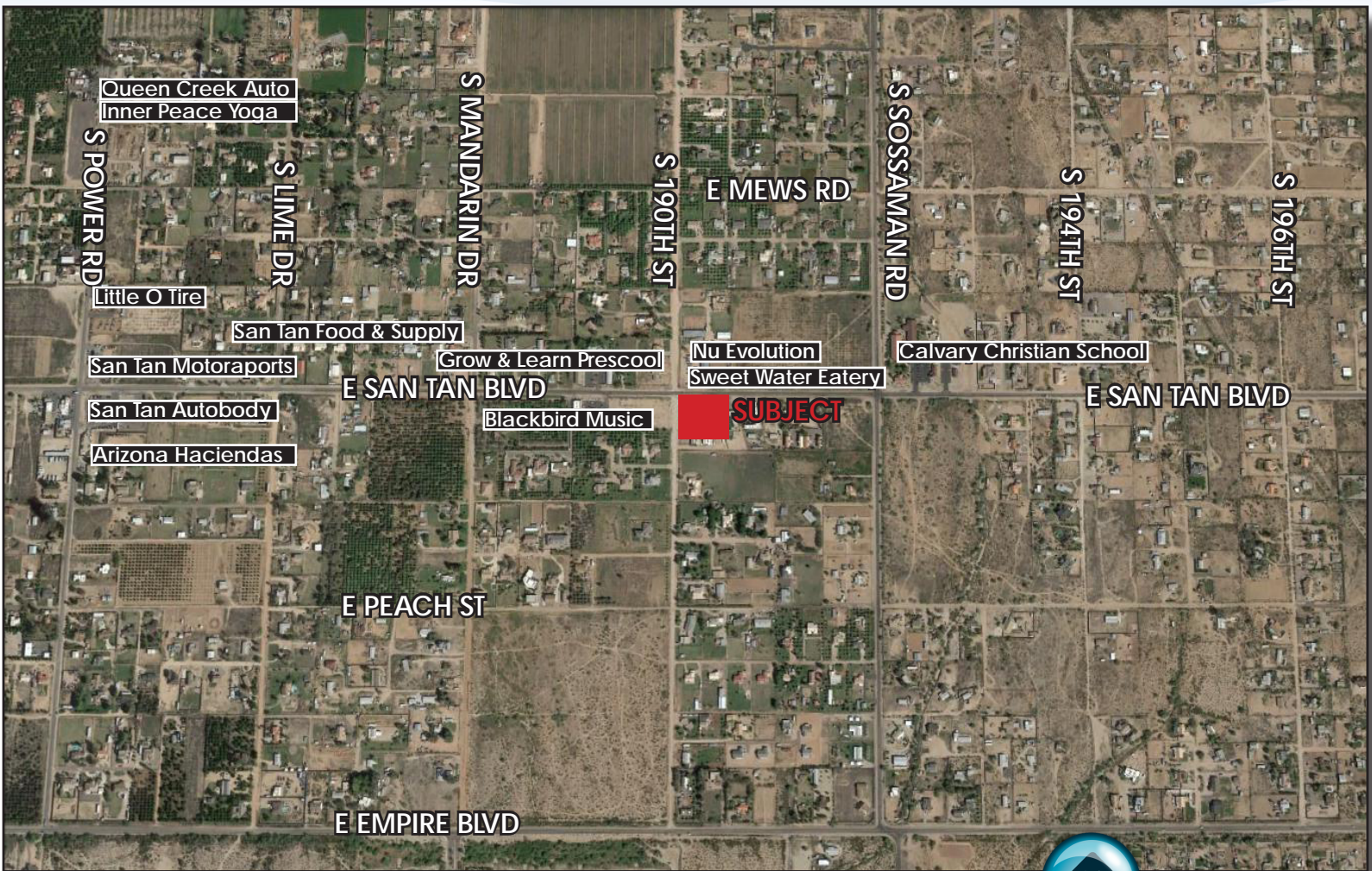
**COMMERCIAL PROPERTIES INC.**

Locally Owned. Globally Connected.

CORFAC  
International

# SAN TAN CENTER

19011 EAST SAN TAN BLVD | QUEEN CREEK, AZ



Trent Rustan  
D: 480.966.5155  
M: 602.550.0709  
trustan@cpiaz.com

Josh Gosnell  
D: 480.621.4022  
M: 602.315.9606  
jgosnell@cpiaz.com



**COMMERCIAL PROPERTIES INC.**

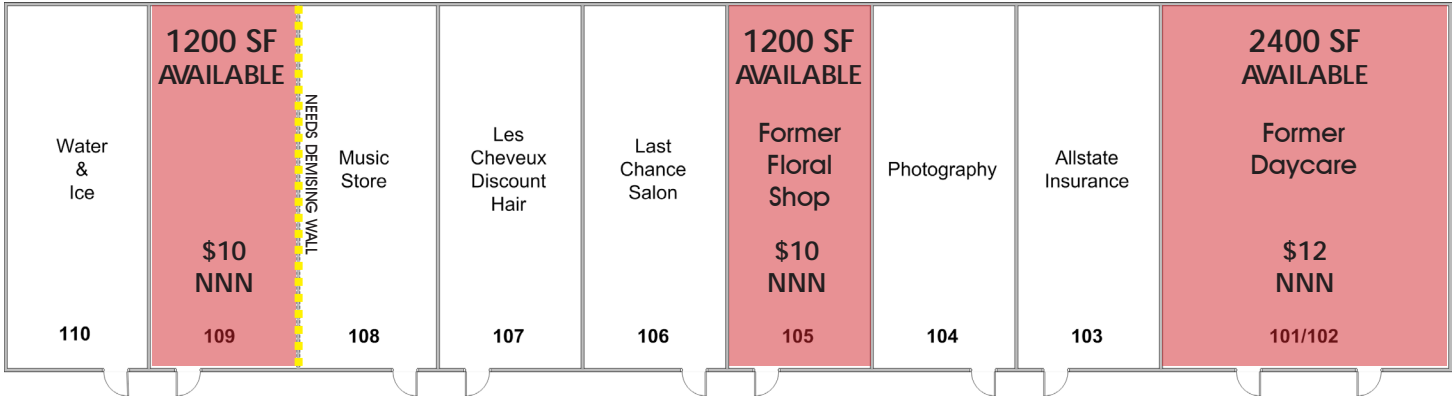
Locally Owned. Globally Connected.

CORFAC  
International

# SAN TAN CENTER

19011 EAST SAN TAN BLVD | QUEEN CREEK, AZ

## FLOOR PLANS ±12,000 SF Total



Trent Rustan  
D: 480.966.5155  
M: 602.550.0709  
trustan@cpiaz.com

Josh Gosnell  
D: 480.621.4022  
M: 602.315.9606  
jgosnell@cpiaz.cim



**COMMERCIAL PROPERTIES INC.**

Locally Owned. Globally Connected.

CORFAC International

# SAN TAN CENTER

19011 EAST SAN TAN BLVD | QUEEN CREEK, AZ



Trent Rustan  
D: 480.966.5155  
M: 602.550.0709  
trustan@cpi.az.com

Josh Gosnell  
D: 480.621.4022  
M: 602.315.9606  
jgosnell@cpi.az.com



**COMMERCIAL PROPERTIES INC.**

Locally Owned. Globally Connected. CORFAC International

The information contained herein has been obtained from various sources. We have no reason to doubt its accuracy; however, J & J Commercial Properties, Inc. has not verified such information and makes no guarantee, warranty or representation about such information. The prospective buyer or lessee should independently verify all dimensions, specifications, floor plans, and all information prior to the lease or purchase of the property. All offerings are subject to price change, prior sale, lease, or withdrawal from the market without prior notice. Effective: 01 13 16