

3610 W. Jefferson

Dallas, Texas



- Retail Space Available
- Rent- Withheld
- Traffic- W. Jefferson Blvd., Westmoreland Rd., & I-30

For more information,
Please contact:

Brandon Johnson

214-855-5900

bjohnson@wellingtonrealty.com

wellington
REALTY

PROPERTY HIGHLIGHTS

Availability

- 12,920 SF
- 2,843 Vacancy
- Rent- \$16.25/SF

Features

- Located in Dallas near I-30, Loop 12, and the Bishop Arts District

Traffic Counts

2017	
W. Jefferson	10,000

Demographics

2017 Summary	1 Mile	3 Mile	5 Mile
Population	26,443	138,719	269,717
Households	6,794	39,915	77,920
Families	5,524	29,201	56,164
Median Disposable Income			\$35,472



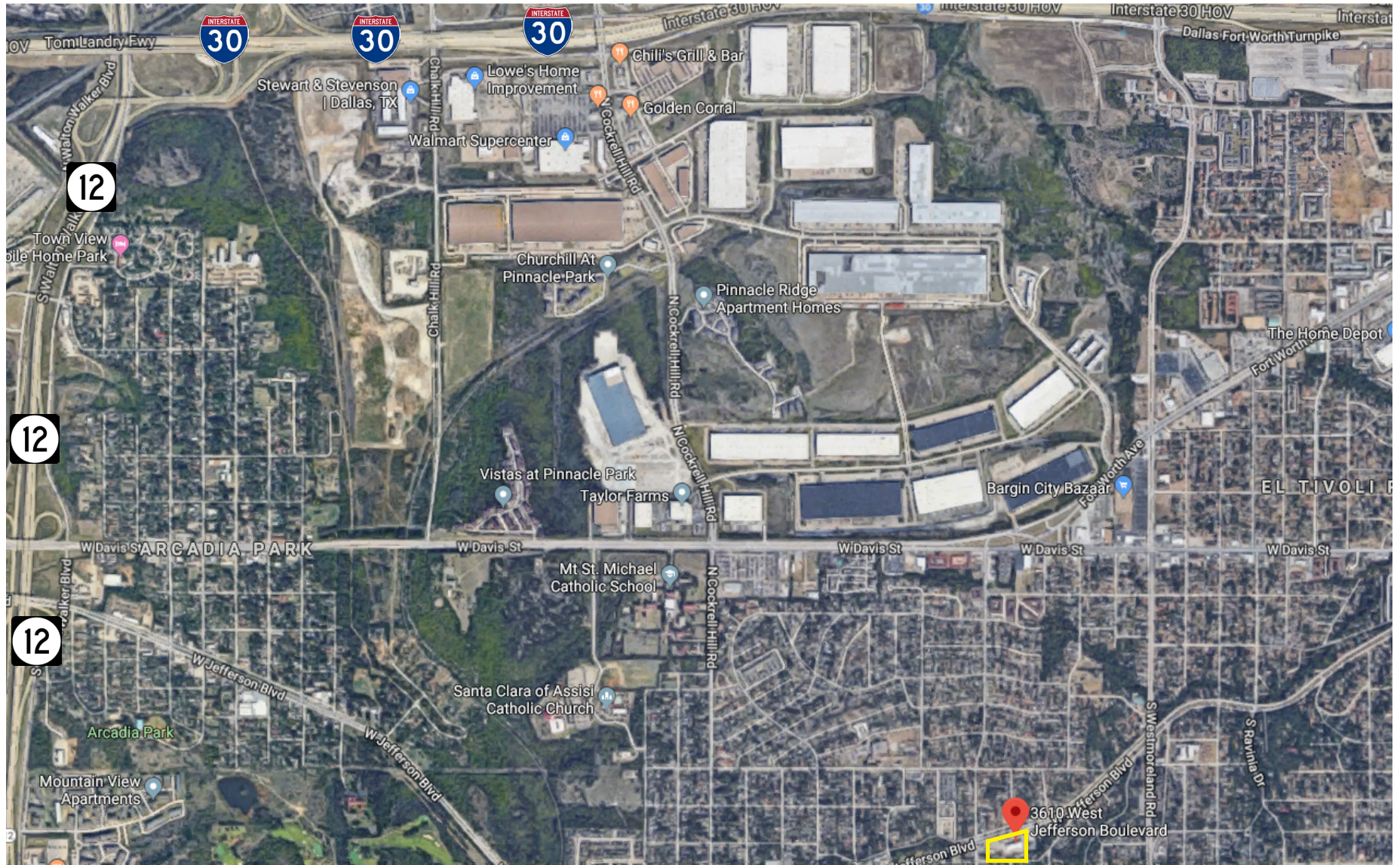
3610 W. Jefferson Blvd.
Dallas, Texas

For more information,
Please contact:
Brandon Johnson
214-855-5900

bjohnson@wellingtonrealty.com

wellington
REALTY

AERIAL



3610 W. Jefferson Blvd.
Dallas, Texas

For more information,
Please contact:
Brandon Johnson
214-855-5900

bjohnson@wellingtonrealty.com

wellington
REALTY