



For Lease

# 5025 Wisconsin Avenue, NW

31,876 RSF Office / Retail Space Available



Floor	Square Feet	Available	Rate
1st	2,200 - 10,857	Immediate	\$ 55 NNN
2nd	10,145	Immediate	\$38 - \$43 FS
3rd	10,874	Immediate	\$38 - \$43 FS



- Retail frontage on Wisconsin Avenue
- Windows on three sides
- Walking distance to Friendship Heights Metro
- Newly renovated main lobby
- Three contiguous floors available
- Former HQ's building - Ideal for single user
- Ample parking available



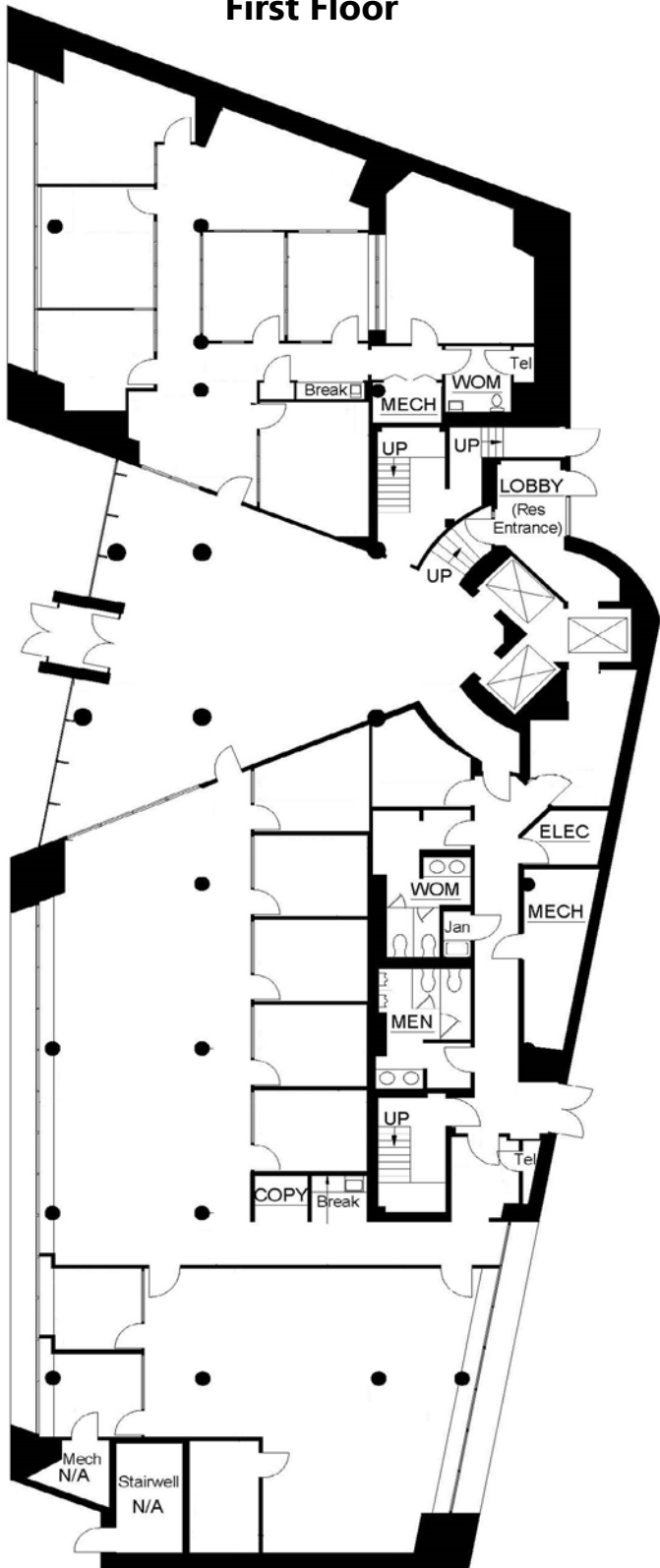
### Leasing Information:

Peter McGill  
202.753.4797  
peter.mcgill@summitcre.com

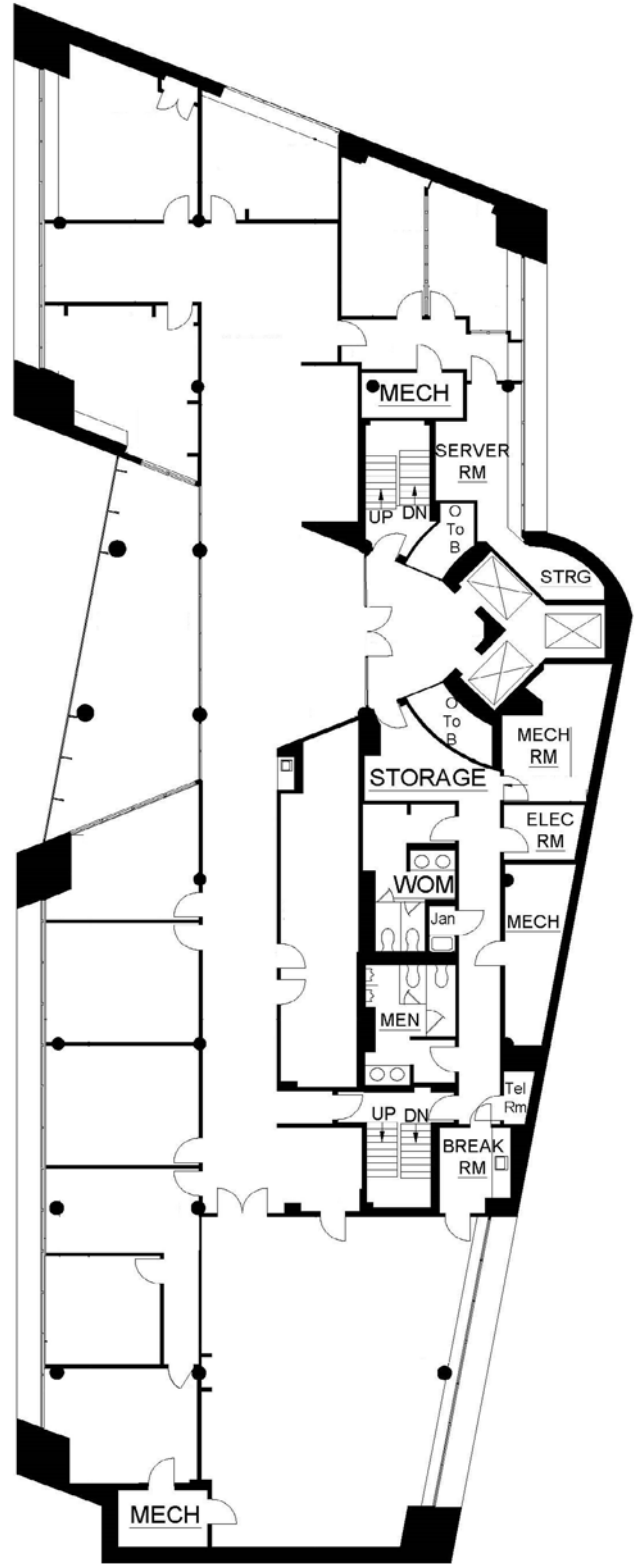
Paul DeFilippes  
202.682.9113  
paul@summitcre.com

John Duffy  
202.682.9114  
jduffy@summitcre.com

**First Floor**



**Second Floor**



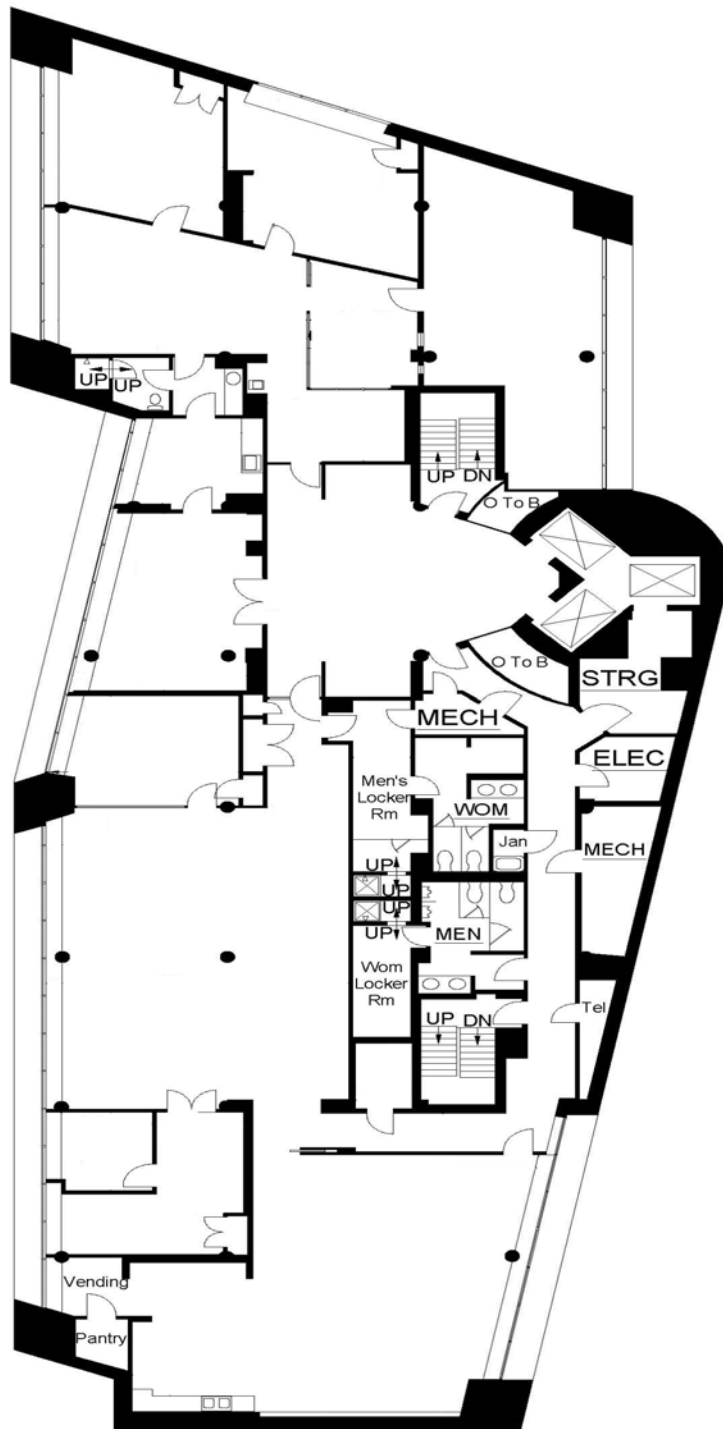
**Leasing Information:**

Peter McGill  
202.753.4797  
peter.mcgill@summitcre.com

Paul DeFilippes  
202.682.9113  
paul@summitcre.com

John Duffy  
202.682.9114  
jduffy@summitcre.com

## Third Floor



### Leasing Information:

Peter McGill  
202.753.4797  
peter.mcgill@summitcre.com

Paul DeFilippes  
202.682.9113  
paul@summitcre.com

John Duffy  
202.682.9114  
jduffy@summitcre.com