

8,963± SF
OFFICE SPACE

AVAILABLE FOR SALE

CALL BROKERS FOR PRICING

111

LINDBERGH AVE. STE F
LIVERMORE, CA



LISTING AGENTS:

Will Ballowe, Associate
wballowe@lee-associates.com
925.737.4143 | LIC# 02053125

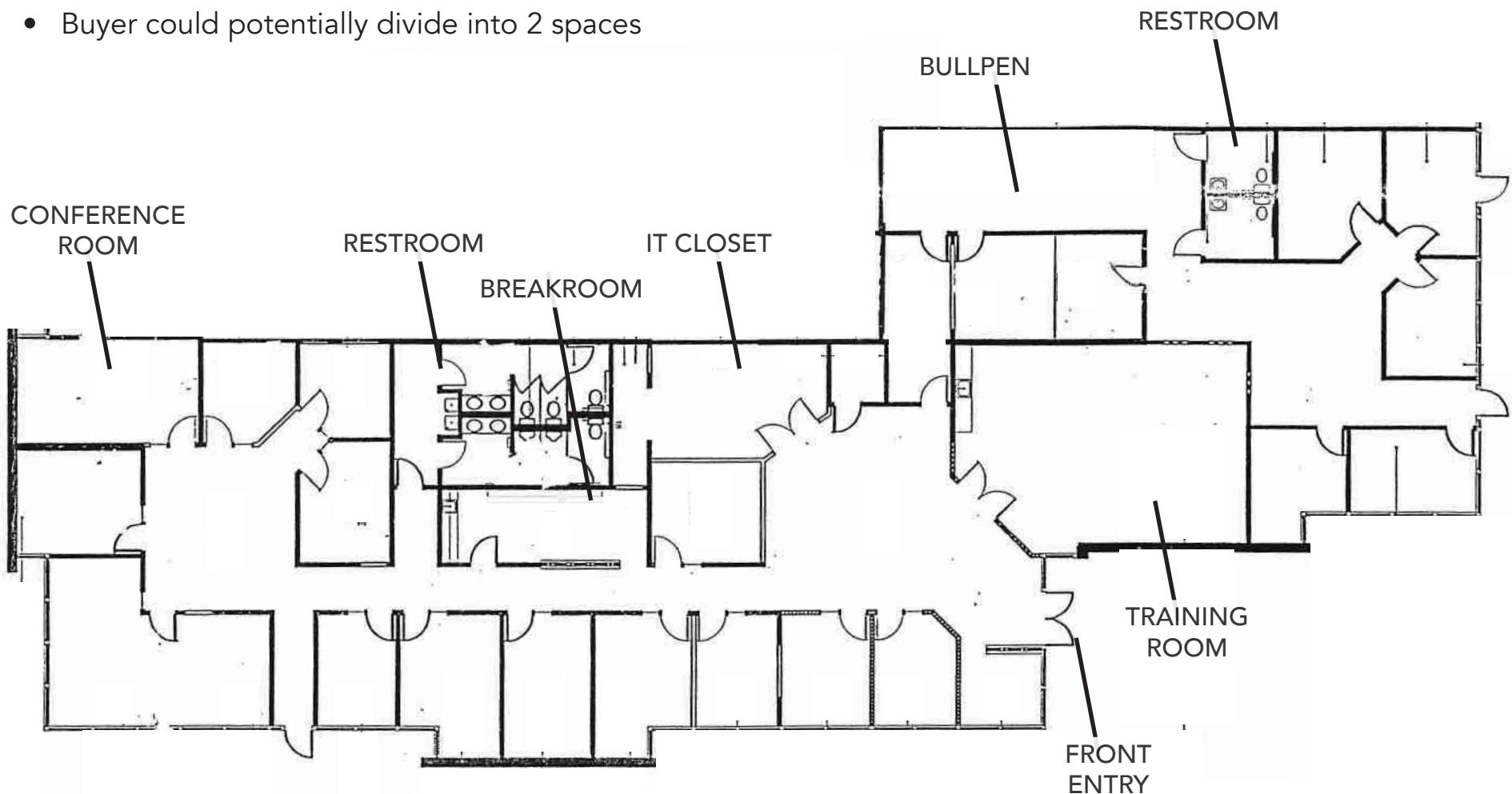
Mark Pleis, Principal
mpleis@lee-associates.com
925.737.4148 | LIC# 00934662

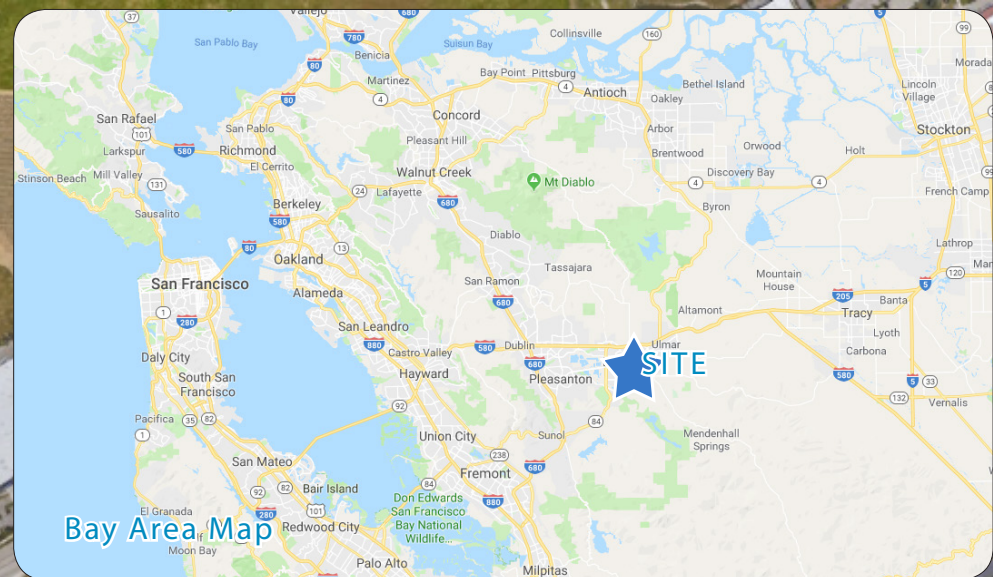
HIGHLIGHTS & FEATURES:

- 8,963±SF Available
- 100% Conditioned Office Buildout
- Modern Design with High Ceilings
- Large Team Training Room
- Two (2) Restroom Cores
- Nearby Amenities include Starbucks, Restaurants, & Shopping
- Easy Access to I-580 Via Airway Blvd.
- Buyer could potentially divide into 2 spaces

111

LINDBERGH AVE. STE F
LIVERMORE, CA





LEE & ASSOCIATES
COMMERCIAL REAL ESTATE SERVICES



