

4150 MIDDLEBELT ROAD
WEST BLOOMFIELD, MICHIGAN



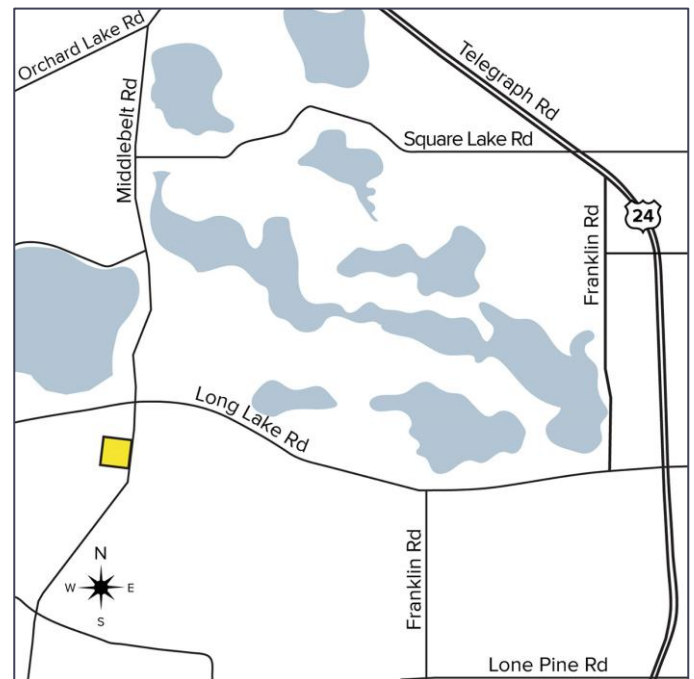
**SIGNATURE
ASSOCIATES**
KNOW SIGNATURE | KNOW RESULTS

DAYCARE/ DEVELOPMENT SITE FOR SALE
2,968 Sq. Ft./2.66 Acres Available



PROPERTY FEATURES

- Existing daycare and summer camp in operation
- 2,968 square foot daycare center plus assorted outbuildings available
- 2.66 acres
- Zoning to be confirmed – Township states R-15
- Possible future condo development
- Possible expansion available
- All utilities available on site
- Sale price: \$1,250,000 (\$421.16/sq.ft.)



For more information, please contact:

DAVE MILLER
(248) 948 4183
dmiller@signatureassociates.com

SIGNATURE ASSOCIATES
One Towne Square, Suite 1200
Southfield, MI 48076
www.signatureassociates.com

4150 Middlebelt Road – West Bloomfield, Michigan

Daycare / Development Site For Sale

2,968
Square Feet /
2.66
Acres
AVAILABLE



DEMOGRAPHICS

	POPULATION	MED. HH INCOME
1 MILE	5,134	\$153,682
3 MILE	40,867	\$123,265
5 MILE	154,379	\$102,734

TRAFFIC COUNTS (TWO-WAY)

19,877	Middlebelt Rd. N. of Long Lake Rd. 2-Way
17,877	Middlebelt Rd. S. of Long Lake Rd. 2-Way
15,920	Long Lake W. of Middlebelt 2-Way
17,833	Long Lake E. of Middlebelt 2-Way



For more information, please contact:
DAVE MILLER
(248) 948 4183
dmiller@signatureassociates.com

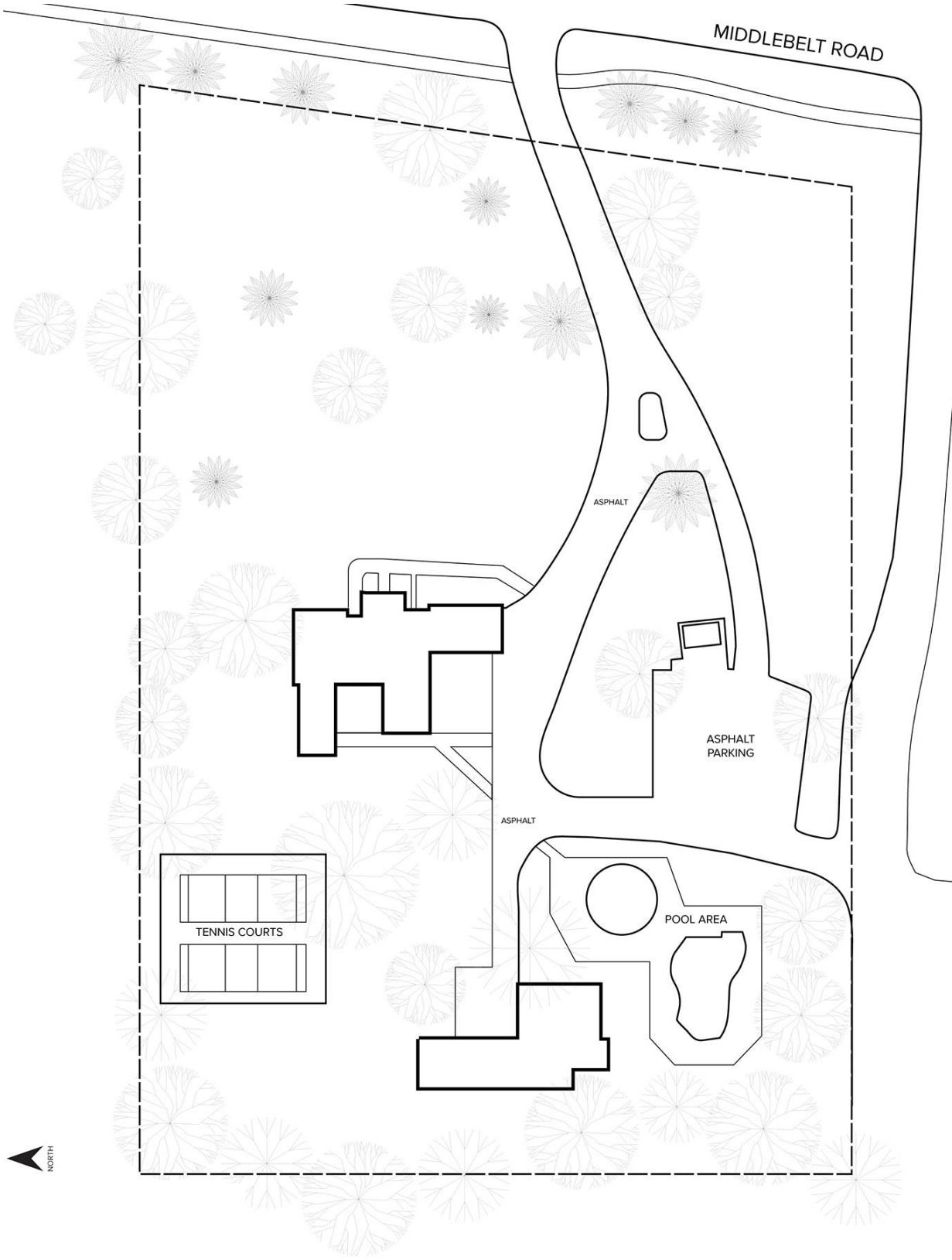
SIGNATURE ASSOCIATES
One Towne Square, Suite 1200
Southfield, MI 48076
www.signatureassociates.com

4150 Middlebelt Road – West Bloomfield, Michigan

Daycare / Development Site For Sale

2,968
Square Feet /
2.66
Acres
AVAILABLE

Site Plan



For more information, please contact:
DAVE MILLER
(248) 948 4183
dmiller@signatureassociates.com

SIGNATURE ASSOCIATES
One Towne Square, Suite 1200
Southfield, MI 48076
www.signatureassociates.com

Information is subject to verification and no liability for errors or omissions is assumed. Price is subject to change and listing withdrawal.