

5980, 6160, 6190 FAIRMOUNT AVE
10957 - 10979 SAN DIEGO MISSION RD

FAIRMOUNT BUSINESS PARK

SAN DIEGO, CA 92120



AVAILABLE FOR LEASE:
MULTI-TENANT SHOWROOM / INDUSTRIAL PARK

H.G. FENTON COMPANY

CBRE

5980, 6160, 6190 FAIRMOUNT AVE
10957 - 10979 SAN DIEGO MISSION RD

FAIRMOUNT BUSINESS PARK

SAN DIEGO, CA 92120



Business park of
approximately 118,241 SF



Parking approximately
2.7 spaces/1,000 SF



Excellent freeway access;
immediately north of I-8 and east
of I-15



Attractive functional
office upgrades



Approximately 18' - 20'
warehouse clearance



AT&T and Cox Services available
(including Coax and Fiber)



Natural gas
available





FAIRMOUNT
BUSINESS PARK

San Diego Mission Rd

Fairmount Ave

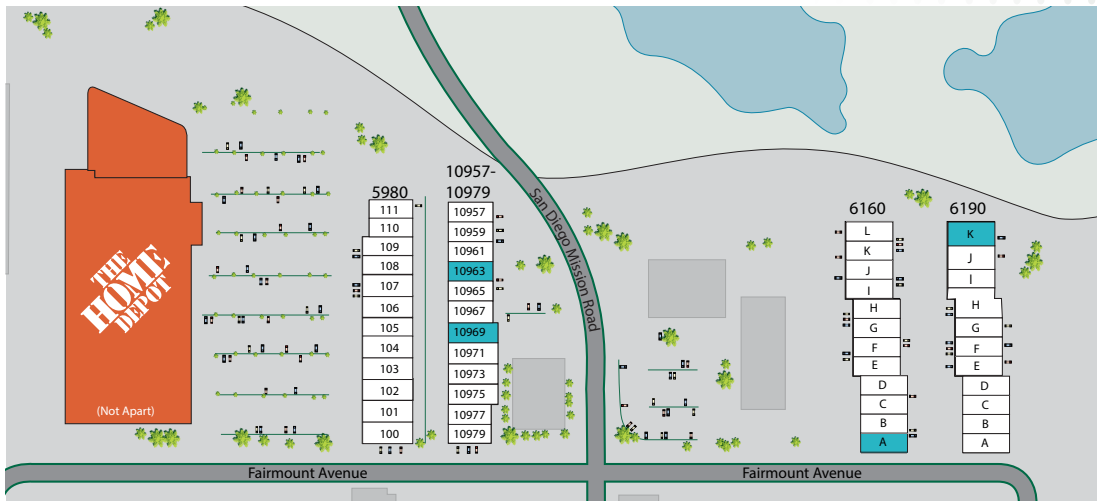
Mission Gorge Rd

Mission Gorge Pl



AVAILABILITY

ADDRESS	SF	RATE	COMMENTS
10963 San Diego Mission Rd	1,851	\$1.60/SF Gross	Approx. 60% office/ 40% warehouse, open office, (2) restrooms and (1) dock high loading door. Available October 1, 2019.
10969 San Diego Mission Rd	2,119	\$1.60/SF Gross	Approx. 30% office/ 70% warehouse, open office area, (2) private offices, (2) restrooms and (1) grade level loading door. Available October 1, 2019.
6160 Fairmount Avenue Suite A	2,664	\$1.60/SF Gross	Approx. 40% office/ 60% warehouse, (3) private offices, open office areas, (2) restrooms and (1) grade level loading door. Available October 1, 2019.
6190 Fairmount Avenue Suites K&L	5,440	\$1.85/SF/Gross	End unit with large fenced yard. Approx. 40% office/ 60% warehouse, combination of open and private offices, break, (2) restrooms, and (1) grade level loading door. Available October 1, 2019.



Available

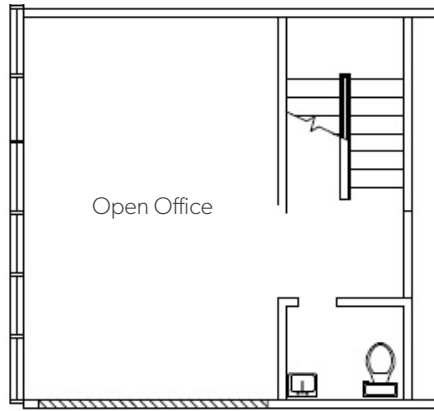


5980, 6160, 6190 FAIRMOUNT AVE
10957 - 10979 SAN DIEGO MISSION RD

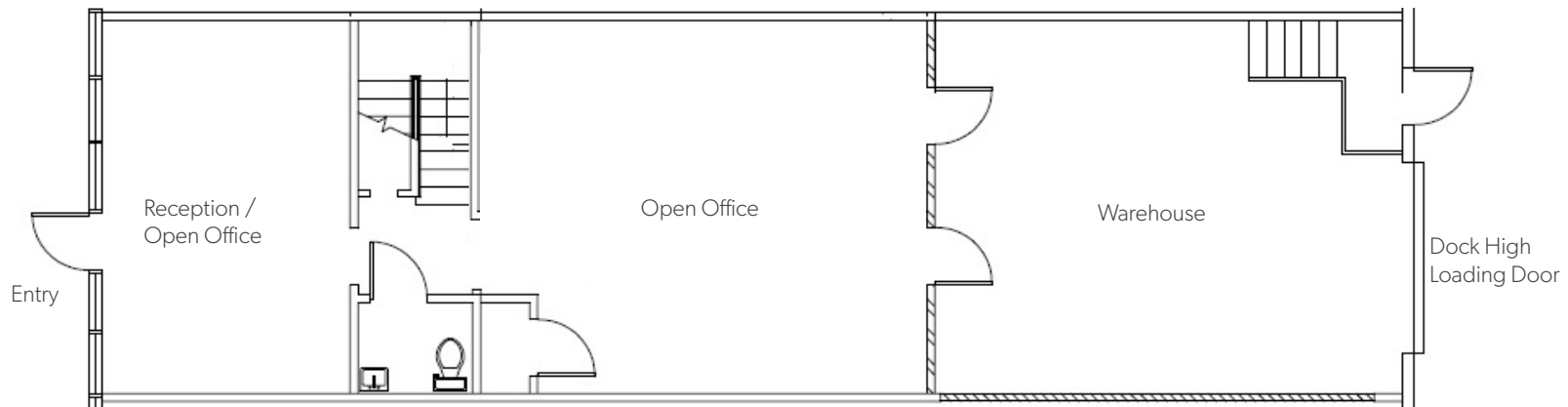
FAIRMOUNT
BUSINESS PARK

SAN DIEGO, CA 92120

10963 SAN DIEGO MISSION ROAD
1,851 SF

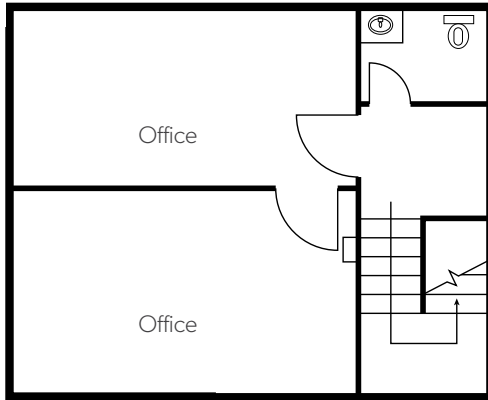


Mezzanine



First Floor

10969 SAN DIEGO MISSION ROAD
2,119 SF

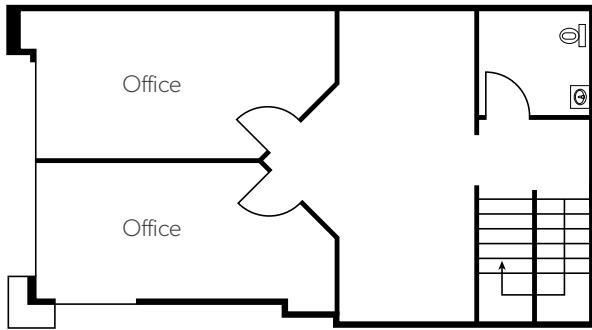


Mezzanine

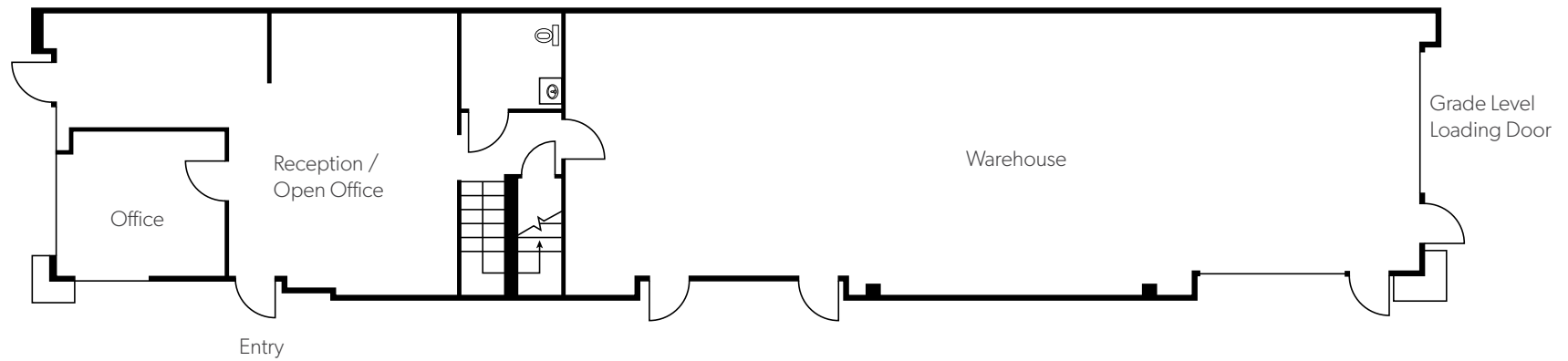


First Floor

6160 FAIRMOUNT AVE, SUITE A
2,664 SF



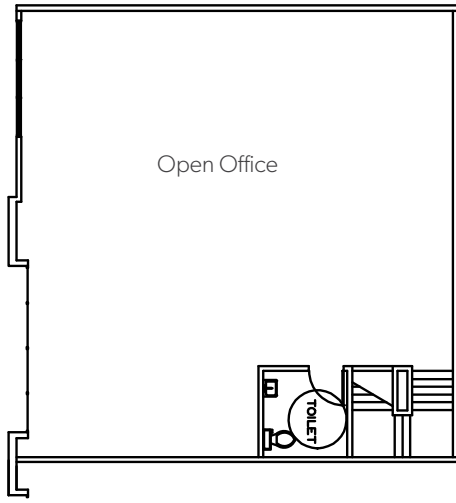
Mezzanine



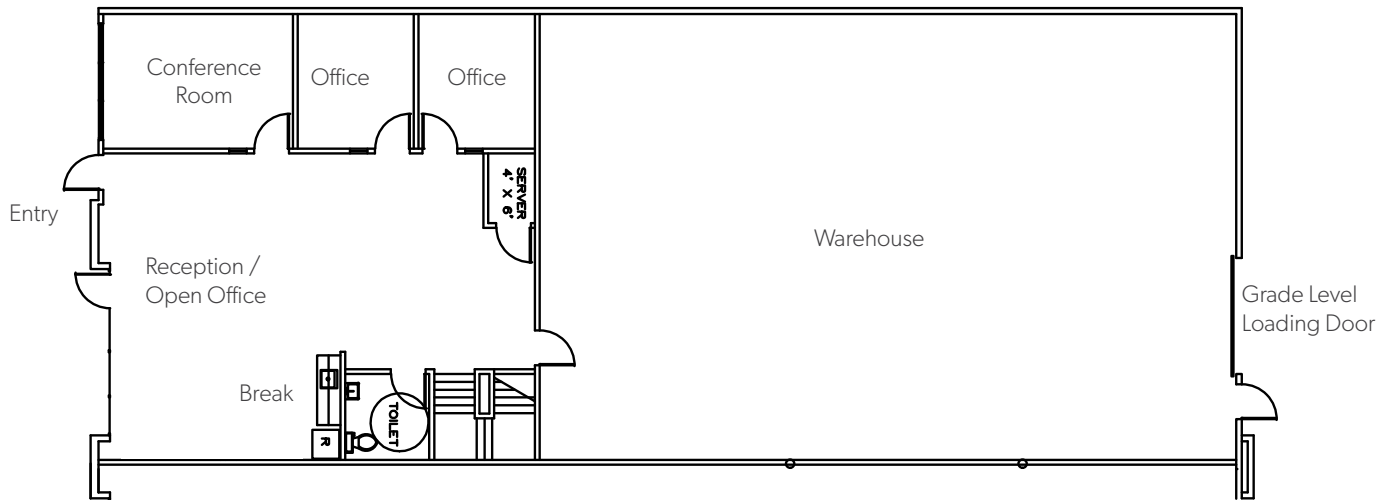
First Floor

6190 FAIRMOUNT AVENUE, SUITES K&L
5,440 SF

PROPOSED SPEC
SUITE COMING
SOON



Mezzanine



First Floor



San Diego Mission Rd

Fairmount Ave

FOR MORE INFORMATION PLEASE CONTACT:

RYAN SPARKS, SIOR

Vice President

Lic. 01784736

+1 858 546 2606

ryan.sparks@cbre.com

SEAN WILLIAMS, SIOR

Vice President

Lic. 01475415

+1 858 546 4625

sean.williams@cbre.com

PETE CARROCCIO

Associate

Lic. 02022898

+1 858 546 4679

pete.carroccio@cbre.com

4301 La Jolla Village Drive | Suite 3000 | San Diego, CA 92122 | www.cbre.com/sandiego

CBRE, INC
Broker Lic. 00409987



© 2019 CBRE, Inc. All rights reserved. This information has been obtained from sources believed reliable, but has not been verified for accuracy or completeness. Any projections, opinions, or estimates are subject to uncertainty. The information may not represent the current or future performance of the property. You and your advisors should conduct a careful, independent investigation of the property and verify all information. Any reliance on this information is solely at your own risk.