

For Lease
3033 E. 1st Avenue
Denver, Colorado



Parking Options

Reserved Spaces	
Ground Level:	\$200.00/month
Unreserved Spaces	
Upper Levels:	\$135.00/month
Underground:	\$150.00/month

For more information:

Ana Sandomire
303 565 3029
asandomire@shamesmakovsky.com

Peter Knisely
720 881 7534
pknisely@shamesmakovsky.com

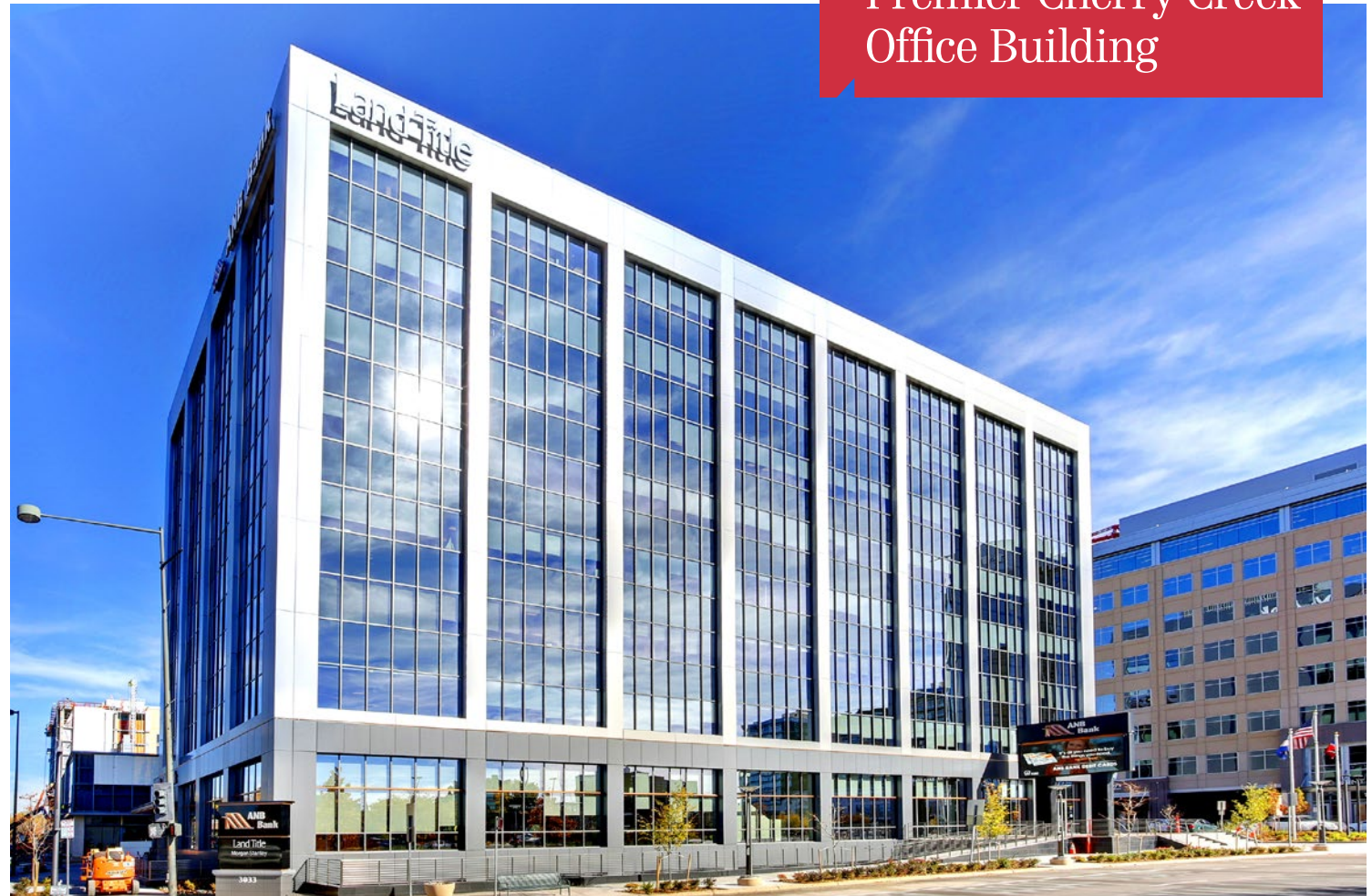


1400 Glenarm Place, Suite 100
Denver, CO 80202
303 534 5005
naishamesmakovsky.com

NAIShames Makovsky

NAIShames Makovsky

For Lease
Premier Cherry Creek
Office Building



3033 East 1st Avenue

Denver, Colorado 80206

Property Overview

- Newly renovated 8-story Cherry Creek office building
- Office suites available for lease ranging in size from 1,329 SF to 5,348 SF with impeccable city and mountain views
- Recent common area upgrades include the building lobby, elevators, restrooms, and a community cafe
- Brand new interior LED lighting throughout and substantial improvements to HVAC system for energy efficiency
- Building facade has been updated and modernized with titanium metal panels and full-building window replacement
- Abundant parking with direct access to building

Lease Rate: \$45.00-\$46.00/SF FSG

NO WARRANTY OR REPRESENTATION, EXPRESS OR IMPLIED, IS MADE AS TO THE ACCURACY OF THE INFORMATION CONTAINED HEREIN, AND THE SAME IS SUBMITTED SUBJECT TO ERRORS, OMISSIONS, CHANGE OF PRICE, RENTAL OR OTHER CONDITIONS, PRIOR SALE, LEASE OR FINANCING, OR WITHDRAWAL WITHOUT NOTICE, AND OF ANY SPECIAL LISTING CONDITIONS IMPOSED BY OUR PRINCIPALS NO WARRANTIES OR REPRESENTATIONS ARE MADE AS TO THE CONDITION OF THE PROPERTY OR ANY HAZARDS CONTAINED THEREIN ARE ANY TO BE IMPLIED.

Property Facts

Available SF:	1,329 - 5,348 SF
Total Building SF:	136,883 SF
Parking Ratio:	3.00/1,000
Year Built / Renov:	1982 / 2017

For more information:

Ana Sandomire
303 565 3029
asandomire@shamesmakovsky.com

Peter Knisely
720 881 7534
pknisely@shamesmakovsky.com

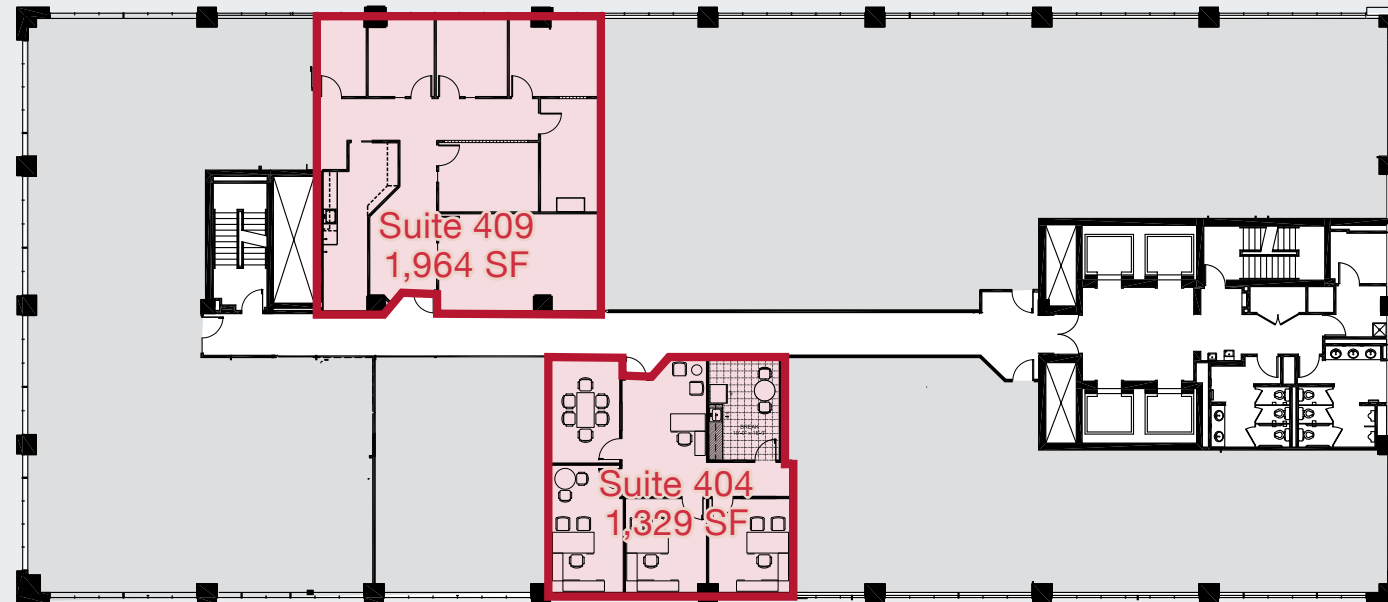
1400 Glenarm Place, Suite 100
Denver, CO 80202
303 534 5005
naishamesmakovsky.com

For Lease
3033 E. 1st Avenue
Denver, Colorado

Available Suites

Suite 404	1,329 SF
Suite 409	1,964 SF
Suite 501	5,348 SF

4th Floor



5th Floor

