

---

# The Keys Center

353-359 BEL MARIN KEYS BLVD. | NOVATO

---

## Excellent Bel Marin Keys Location!

- Private Entrance, Refreshed Office Space Available
- Easy Access from HWY 101 entrance/exit ramps
- Strong visibility from road and curb appeal of well cared for building
- Private Office Suites offering flexible configurations between 500 sq. ft. - 1400 sq. ft.
- Well Maintained, Easy Parking Lot Access
- Walkable area with amenities
- Strong Commercial Business District



**LEASEPFI**  
**COMMERCIAL**

Nicholas Zabelin | 415.883.2736 x326 | [nzabelin@leasepfi.com](mailto:nzabelin@leasepfi.com)

# The Keys Center

353-359 BEL MARIN KEYS BLVD. | NOVATO



## Lease Information

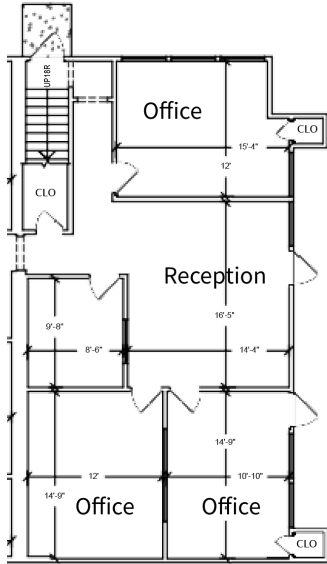
Lease Type:	MG	Lease Term:	Negotiable
Total Space:	674 - 3,686 SF	Lease Rate:	\$1.60 SF/month

## Available Spaces

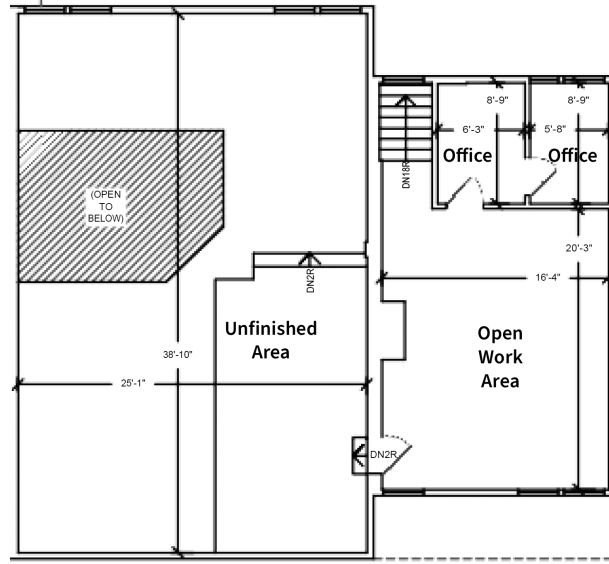
Suite	Size (SF)	Lease Type	Lease Rate	Description
353 - Suite 1	2,359 SF	Modified Gross	\$1.60 SF/month	A suite featuring four private offices, a reception area, and a storage closet and an upper level suite with two private offices, a reception area and a large unfinished storage space.
353 - Suite 4	1,118 SF	Modified Gross	\$1.60 SF/month	A prime office suite with three private offices, a reception area, a kitchenette, and a restroom.
353 - Suite 1, 2A & 4	3,686 SF	Modified Gross	\$1.60 SF/month	Suites 1, 2A and 4 can be combined for 3,686 sf of prime office space. The large suites has 8 private offices, reception, open work areas, unfinished storage, a kitchenette, and a restroom.
359 - Suite 27	674 SF	Modified Gross	\$1.60 SF/month	A private suite with a large work room, several closets and a restroom.

# The Keys Center

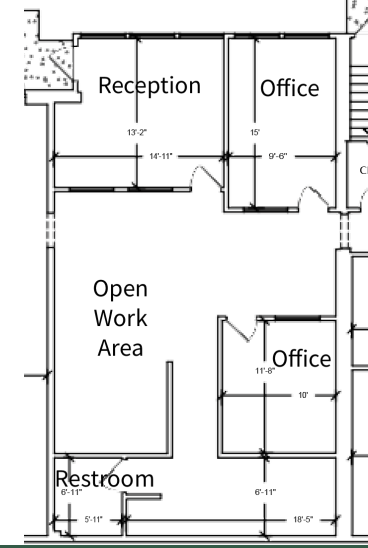
353-359 BEL MARIN KEYS BLVD. | NOVATO



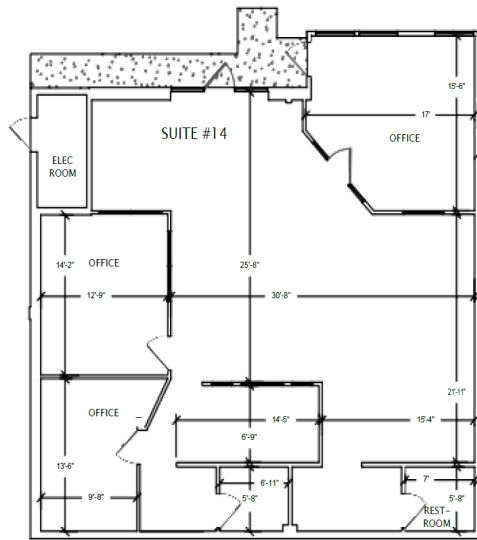
Suite 1 | 1,223 sf | 4 offices, reception, and a storage closet.



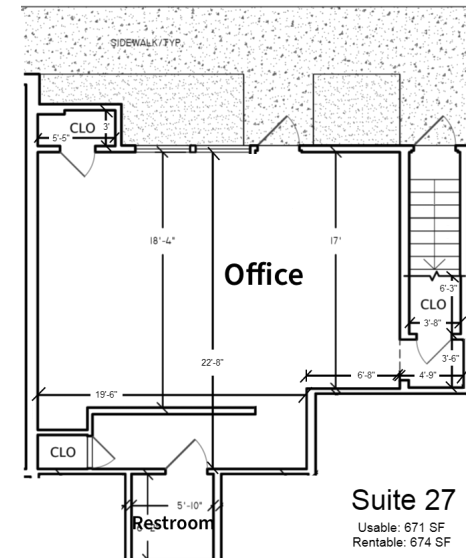
Suite 2A | 1,351 sf | 2 offices, open work space, and storage area.



Suite 4 | 1,112 sf | 2 offices, reception, open work area, kitchenette and a restroom.



Suite 14 | 1,737 sf | 3 offices, large open work area, kitchenette and restroom.



Suite 27 | 674 sf | large open office space / work area with closets and a restroom.

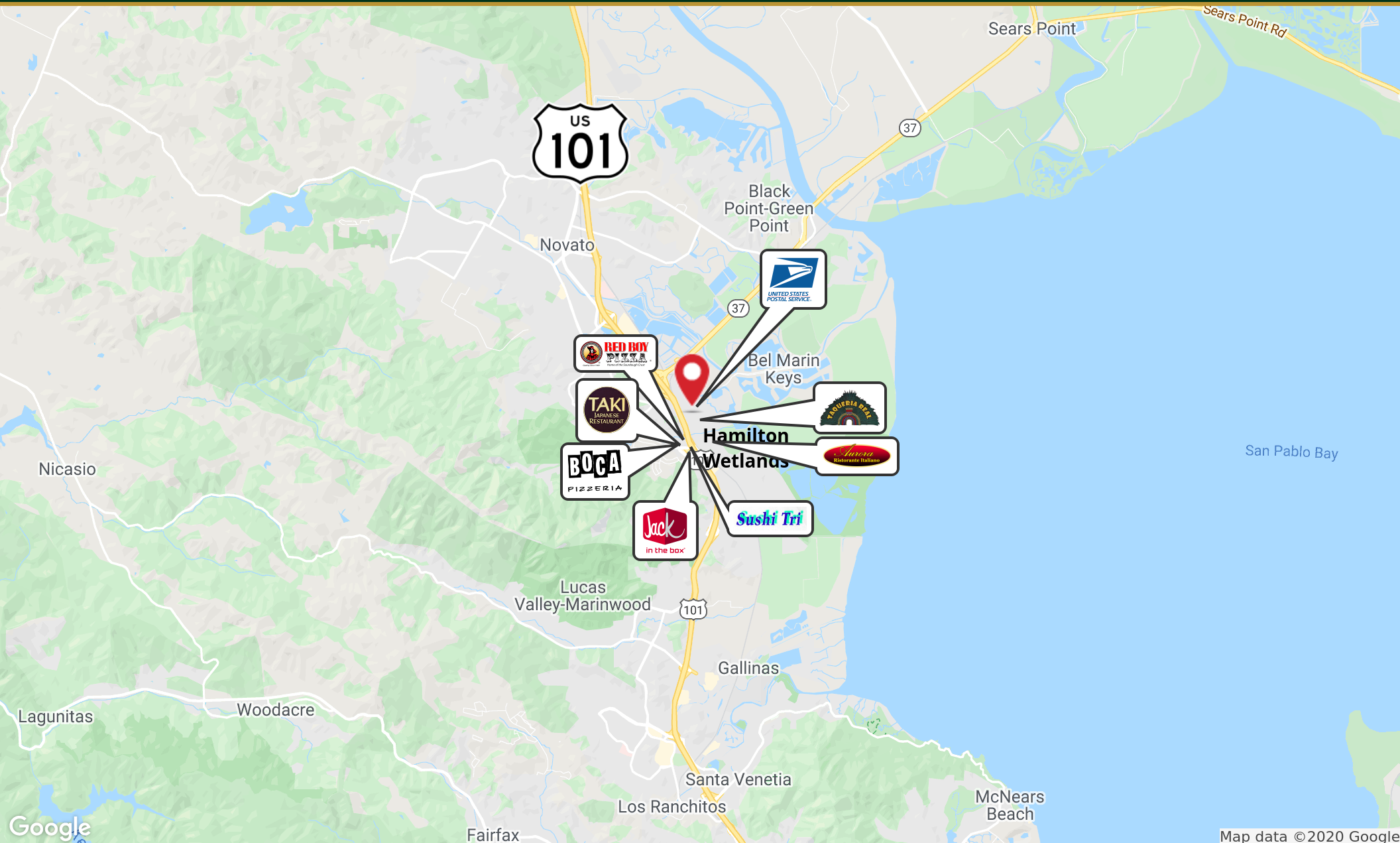
# The Keys Center

353-359 BEL MARIN KEYS BLVD. | NOVATO



# The Keys Center

353-359 BEL MARIN KEYS BLVD. | NOVATO



Map data ©2020 Google