

FOR LEASE | LOCATED AT I-580 AND SANTA RITA RD

±3,000 SF END CAP AVAILABLE IN PLEASANTON

JUST OPENED, PARIS BAGUETTE



Robin Newton
Senior Director
Retail & Investments
925-296-3316
robin.newton@tricommercial.com
LIC: #01298897

6700 SANTA RITA RD AT I-580

END CAP SPACE AVAILABLE
FOR LEASE IN PLEASANTON, CA

Property Details

Address	6700 Santa Rita Road
Closest Highway	I-580 (0.1 Mile)
Availability Type	Nice end cap
Square Footage	±3,000 SF End cap
Signage	Monument Available

Located Near Multiple Retail Centers

Uses

General/Retail

Traffic ±45,600 on Tassajara, ±241,000 on I-580

Demographics	1 Mi	3 Mi	5 Mi
Population	28,462	107,371	187,480
Daytime Pop.	12,502	66,495	102,043
Avg. HH Income	\$170,980	\$181,217	\$185,495



Robin Newton

925-296-3316

robin.newton@tricommercial.com

LIC: #01298897

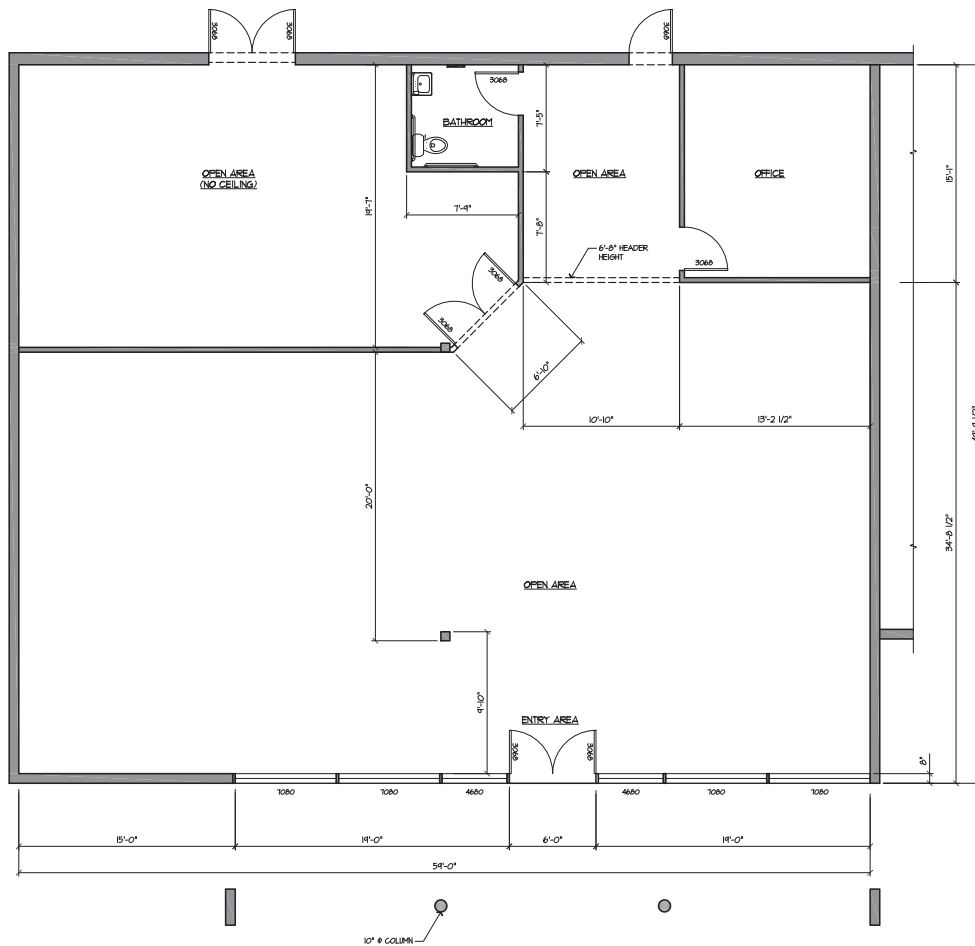


www.tricommercial.com

6700 SANTA RITA RD AT I-580

END CAP SPACE AVAILABLE
FOR LEASE IN PLEASANTON, CA

END CAP SPACE: $\pm 3,000$ SF



Robin Newton

925-296-3316

robin.newton@tricommercial.com

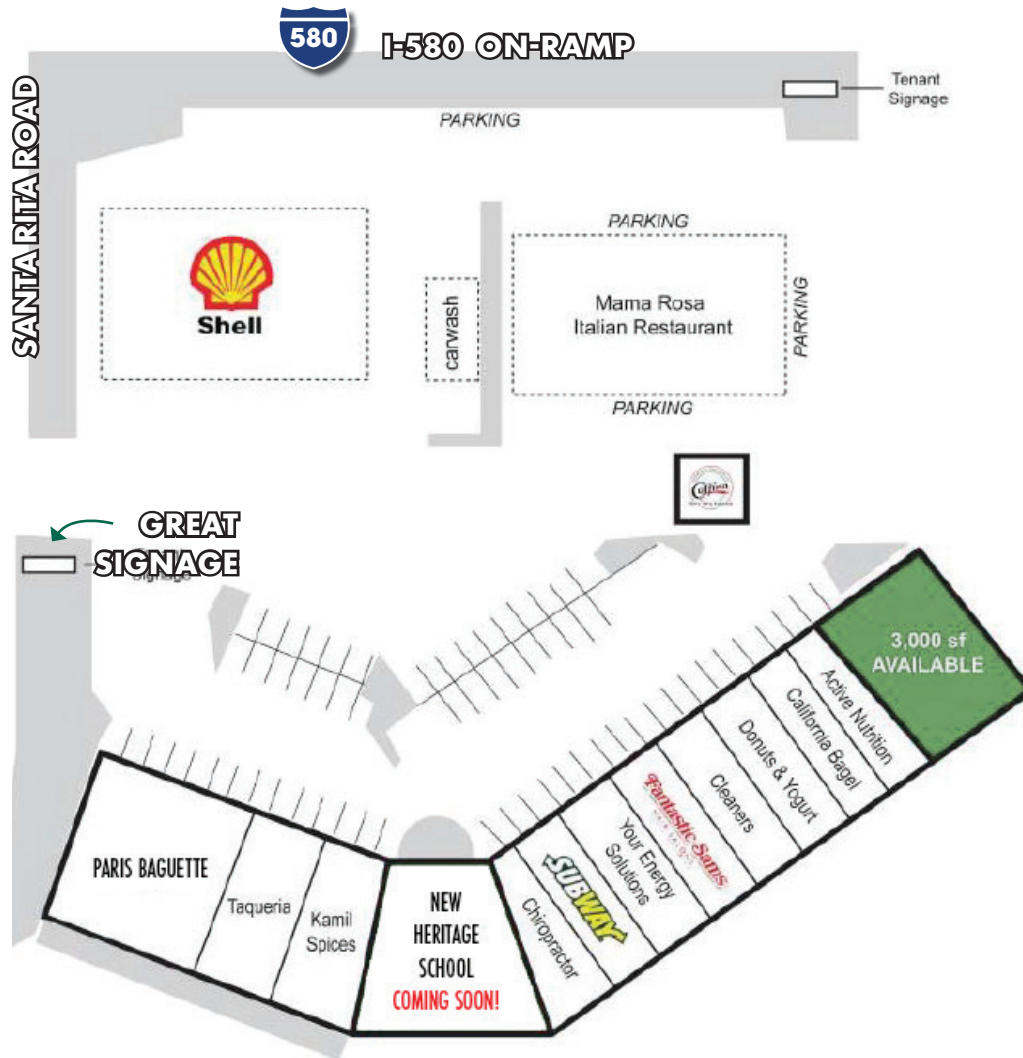
LIC: #01298897



www.tricommercial.com

6700 SANTA RITA RD AT I-580

END CAP SPACE AVAILABLE
FOR LEASE IN PLEASANTON, CA



Robin Newton
925-296-3316
robin.newton@tricommercial.com
LIC: #01298897



www.tricommercial.com