

AVAILABLE FOR LEASE

10 Orchard, Suite 200, Irvine CA 92618

± 13,419 SF



LISTING DATA

- Approximately 13,419 Square Feet±
- Space is divisible to 6,000 SF
- High image office buildings located in a corporate campus environment
- Building top and secondary signage available
- 2-Story lobby entrances
- State-of-the-art fiber optics
- Excellent 241 Freeway access and views
- Bake Parkway frontage
- 4/1000 parking
- Close proximity to numerous retail amenities



For more information, contact:

MARK JERUE
Senior Vice President
CalDRE: 01073399
949.790.3121
mjerue@leeirvine.com

CRAIG FITTERER
Senior Vice President
CalDRE: 01246929
949.790.3123
ctterer@leeirvine.com

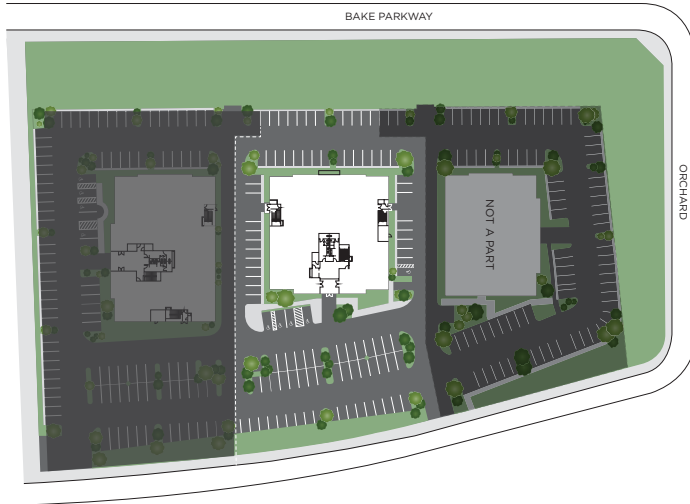
All information furnished regarding property for sale, rental or financing is from sources deemed reliable, but no warranty or representation is made to the accuracy thereof and same is submitted to errors, omissions, change of price, rental or other conditions prior to sale, lease or financing or withdrawal without notice. No liability of any kind is to be imposed on the broker herein.

AVAILABLE FOR LEASE

10 Orchard, Suite 200, Irvine CA 92618
± 13,419 SF

PROPERTY DESCRIPTION

SITE PLAN



PROPERTY DESCRIPTION

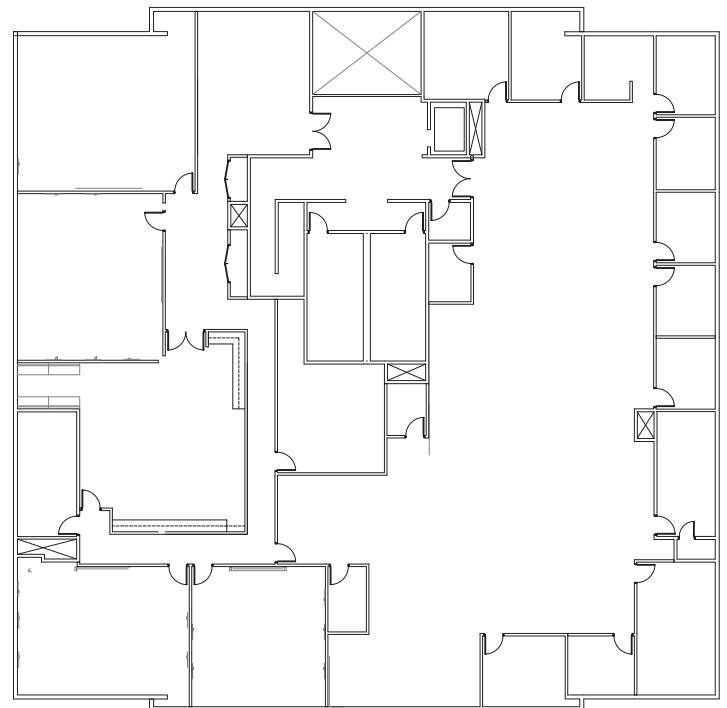
FLOOR PLANS - 10 ORCHARD: SECOND FLOOR



For more information, contact:

MARK JERUE
Senior Vice President
CalDRE: 01073399
949.790.3121
mjerue@leeirvine.com

CRAIG FITTERER
Senior Vice President
CalDRE: 01246929
949.790.3123
ctterer@leeirvine.com



All information furnished regarding property for sale, rental or financing is from sources deemed reliable, but no warranty or representation is made to the accuracy thereof and same is submitted to errors, omissions, change of price, rental or other conditions prior to sale, lease or financing or withdrawal without notice. No liability of any kind is to be imposed on the broker herein.