

FOR LEASE > 5,760 SF



940 S Harney Street Building

940 S HARNEY STREET, SEATTLE, WA 98108



FEATURES

- > ± 5,760 total square feet for lease
- > ± 1,463 square feet of office
- > Office HVAC served
- > 1 grade level door
- > 14' clear height
- > Ample power
- > Off street parking
- > \$0.80 per square foot blended, NNN
- > Est. NNN - \$0.20 per square foot
- > Ready for occupancy May 1, 2014



TROY STARK
+1 206 515 4493
SEATTLE, WA
troy.stark@colliers.com

COLLIERS INTERNATIONAL
601 Union Street, Suite 5300
Seattle, WA 98101
www.colliers.com

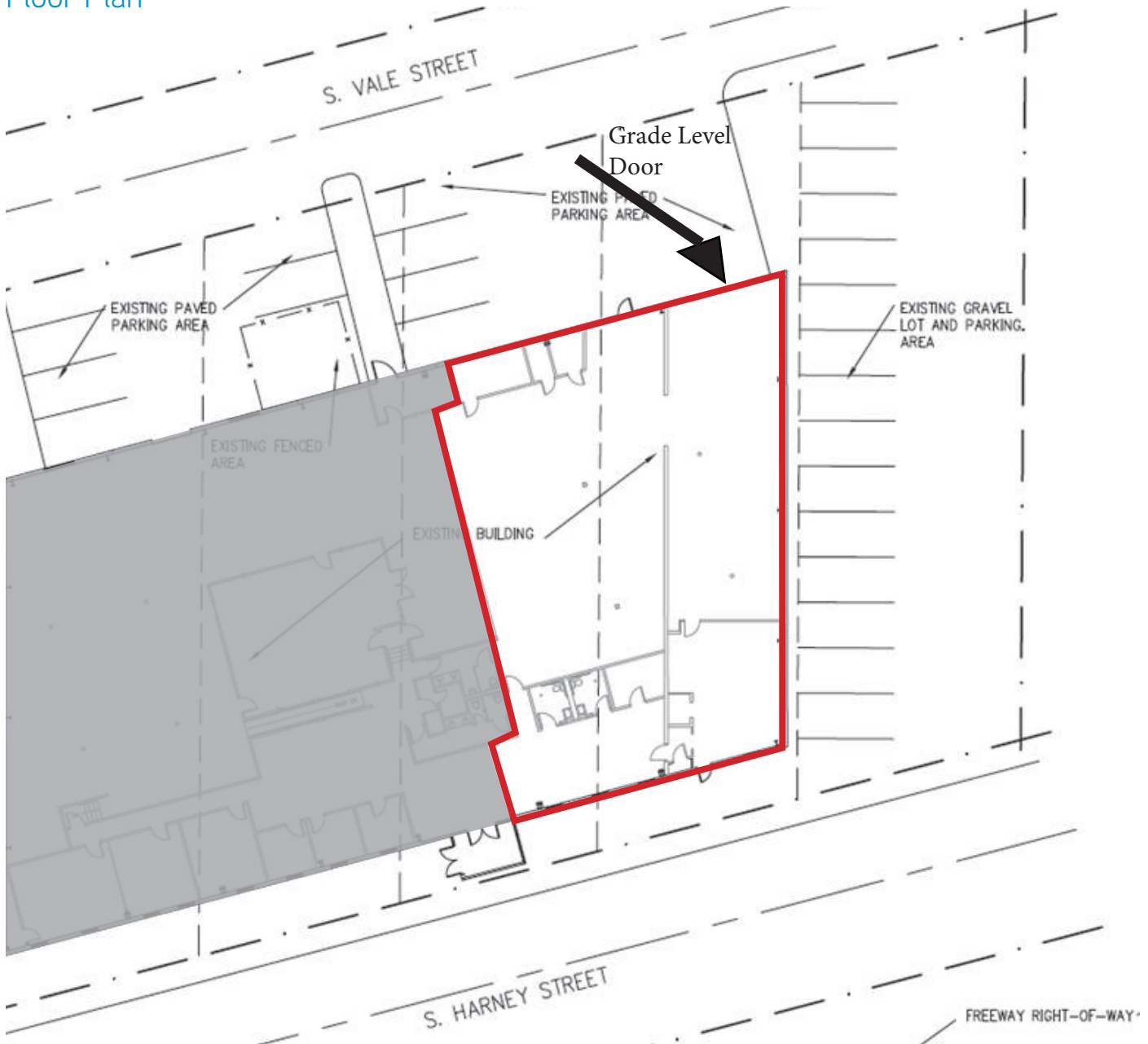
FOR LEASE > 5,760 SF



940 S Harney Street Building

940 S HARNEY STREET, SEATTLE, WA 98108

Floor Plan



This document has been prepared by Colliers International for advertising and general information only. Colliers International makes no guarantees, representations or warranties of any kind, expressed or implied, regarding the information including, but not limited to, warranties of content, accuracy and reliability. Any interested party should undertake their own inquiries as to the accuracy of the information. Colliers International excludes unequivocally all inferred or implied terms, conditions and warranties arising out of this document and excludes all liability for loss and damages arising there from. Colliers International is a worldwide affiliation of independently owned and operated companies. This publication is the copyrighted property of Colliers International and /or its licensor(s). © 2014. All rights reserved

TROY STARK
+1 206 515 4493
SEATTLE, WA
troy.stark@colliers.com

COLLIERS INTERNATIONAL
601 Union Street, Suite 5300
Seattle, WA 98101
www.colliers.com