

FOR LEASE

Olive Park Shopping Center

5814-5838 W Olive Ave, Glendale, AZ



JOIN:



FEATURES

±833 SF to ±5,474 SF available

Adjacent to Glendale Community College

Zoned C-C, Commercial Center; ±20,055 RSF

High traffic counts with over 68,000 VPD at intersection

Established infill trade area with high traffic counts

Aggressive lease rates and incentives

CONTACT

Matthew Ault

Vice President

602.513.5128

mault@kiddermathews.com

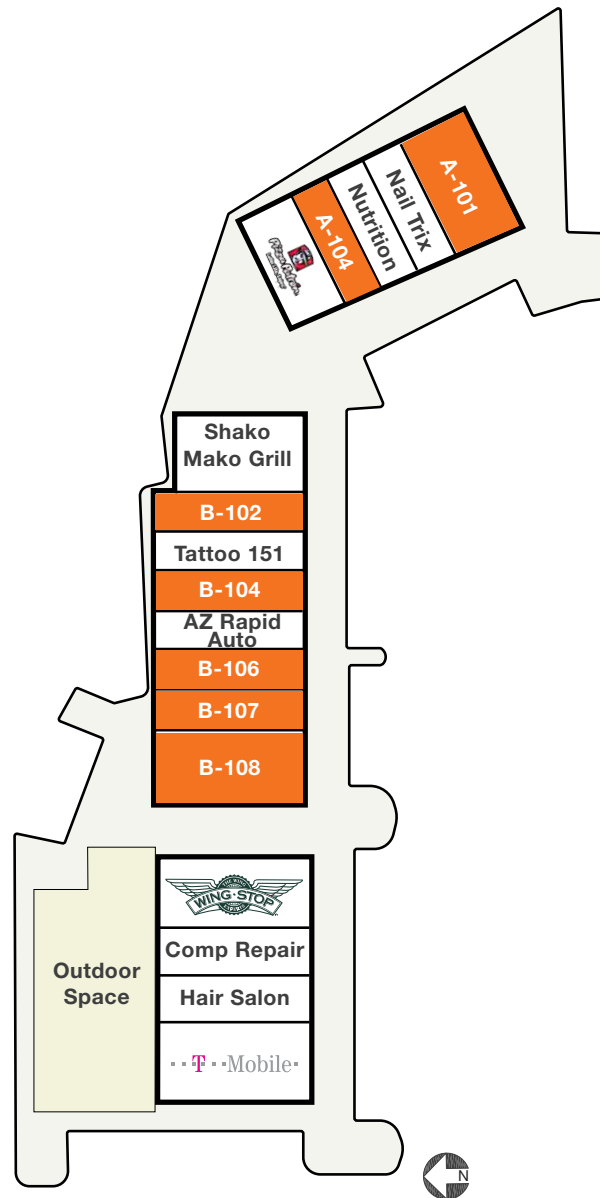


FOR LEASE

Olive Park Shopping Center

AVAILABILITIES

| Suite | Tenants | Square Feet |
|--------------|----------------------------------|------------------|
| A-101 | Available | 1,215 SF |
| A-102 | Nail Trix | 900 SF |
| A-103 | Domination Nutrition | 924 SF |
| A-104 | Available | 833 SF |
| A-105 | Pizza Patron | 1,150 SF |
| B-101 | Shako Mako Grill | 1,299 SF |
| B-102 | Available | 1,211 SF |
| B-103 | Tattoo 151 | 1,277 SF |
| B-104 | Available | 1,092 SF |
| B-105 | AZ Rapid Auto | 1,082 SF |
| B-106 | Available | 980 SF |
| B-107 | Available | 980 SF |
| B-108 | Available (restaurant build-out) | 1,350 SF |
| C-101/102 | Wingstop | 2,400 SF |
| C-103 | Computer Repair | 859 SF |
| C-104 | Hair Salon | 1,120 SF |
| C-105 | T-Mobile | 1,383 SF |
| Total | | 20,055 SF |



CONTACT

Matthew Ault
 Vice President
 602.513.5128
 mault@kiddermathews.com



FOR LEASE

Olive Park Shopping Center



CONTACT

Matthew Ault
 Vice President
 602.513.5128
 mault@kiddermathews.com

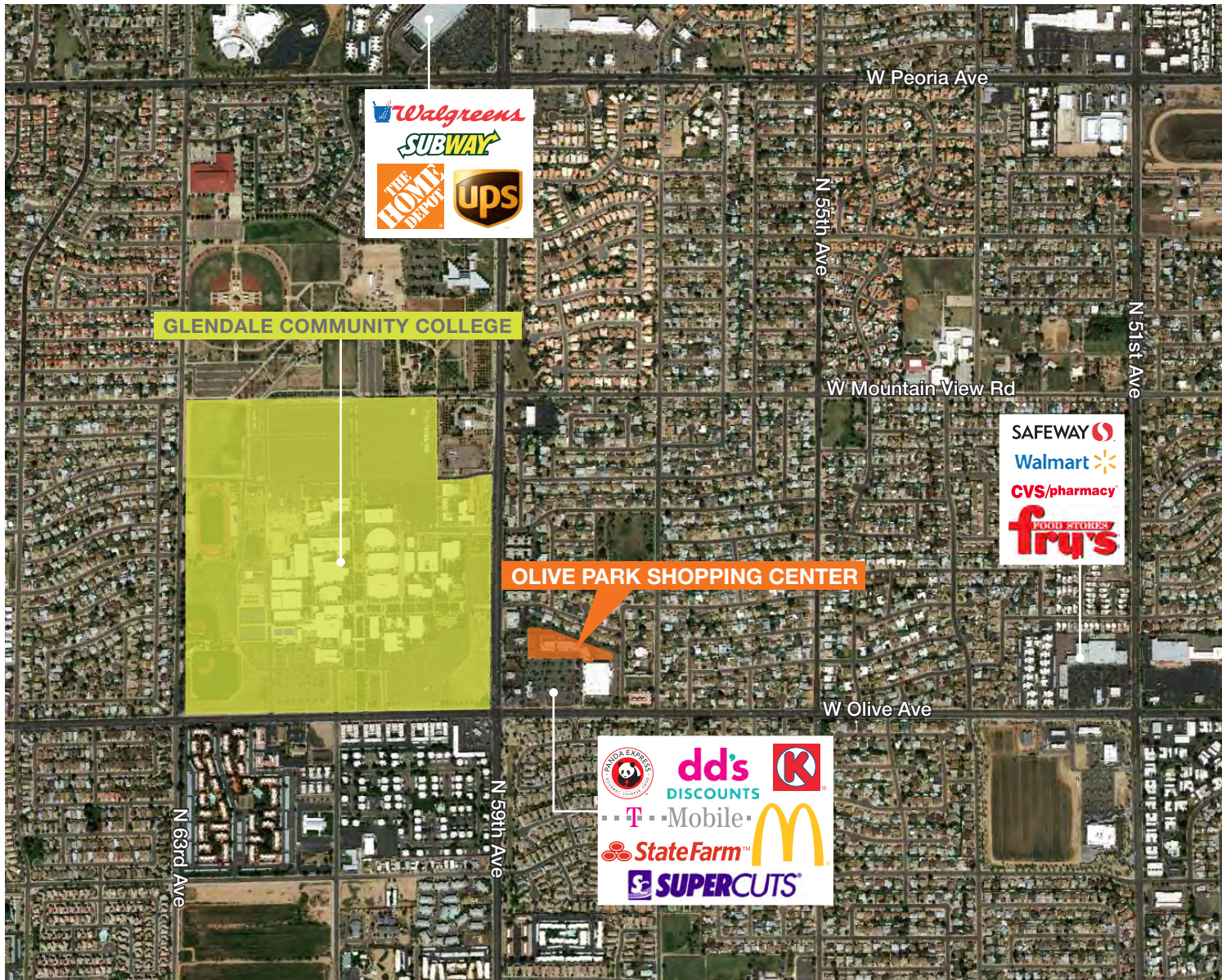
DEMOGRAPHICS

| 2013 | 1 MILE | 3 MILE | 5 MILE |
|------------------|----------|----------|----------|
| Population | 18,777 | 153,918 | 421,606 |
| Households | 7,276 | 53,680 | 144,279 |
| Median HH Income | \$51,542 | \$56,137 | \$55,279 |



FOR LEASE

Olive Park Shopping Center



CONTACT

Matthew Ault
Vice President
602.513.5128
mault@kiddermathews.com

