

# UNION SQUARE OFFICE SUITES AVAILABLE

27 Maiden Lane, San Francisco, CA 94108



## AVAILABLE SPACES

- Suite 203: 2nd Floor, 1,168 RSF
- Suite 300: 3rd Floor, 2,634 RSF
- Suite 500: 5th Floor, 6,842 RSF
- Suite 600: 6th Floor, 2,299 RSF
- Suite 650: 6th Floor, 5,460 RSF



**SCOTT VIX, CCIM | SIOR**

Dir: 415.268.2218

Cell: 415.309.4015

svix@tricommercial.com

CalDRE #01407761

**JEAN KO**

Dir: 415.268.2252

Cell: 415.810.1914

jko@tricommercial.com

CalDRE #01184706

TRI Commercial Real Estate Services 71 Stevenson St, Ste 1450, San Francisco, CA 94105



# FOR LEASE OFFICE BUILDING

## AVAILABLE SPACES

1,168 - 6,842 SF



### Suite 203 1,168 SF

Lease Rate: Low \$30's      Date Available:      Space Type: Office Building

Space Features: No windows; 1 conference room/office; open space; no water



### Suite 300 2,634 SF

Lease Rate: Negotiable      Date Available:      Space Type: Office Building

Space Features: 1 conference room; high ceilings; kitchenette (no water)



### Suite 500 6,842 SF

Lease Rate: Negotiable      Date Available:      Space Type: Office Building

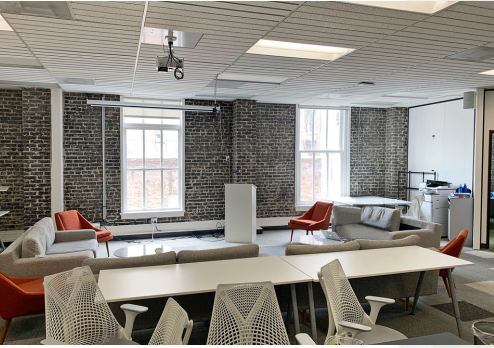
Space Features: 7 private office, open kitchen, high ceilings, excellent natural light



# FOR LEASE OFFICE BUILDING

## AVAILABLE SPACES

1,168 - 6,842 SF



### Suite 600 2,299 SF

Lease Rate: Negotiable      Date Available: 12-01-2019      Space Type: Office Building

Space Features: Excellent natural light; exposed brick walls; 2 private offices; 1 conference room; kitchenette (no water)



### Suite 650 5,460 SF

Lease Rate: Negotiable      Date Available:      Space Type: Office Building

Space Features: 11 Private Offices, 2 Conference Rooms, Kitchenette, High Ceilings, Excellent Natural Light

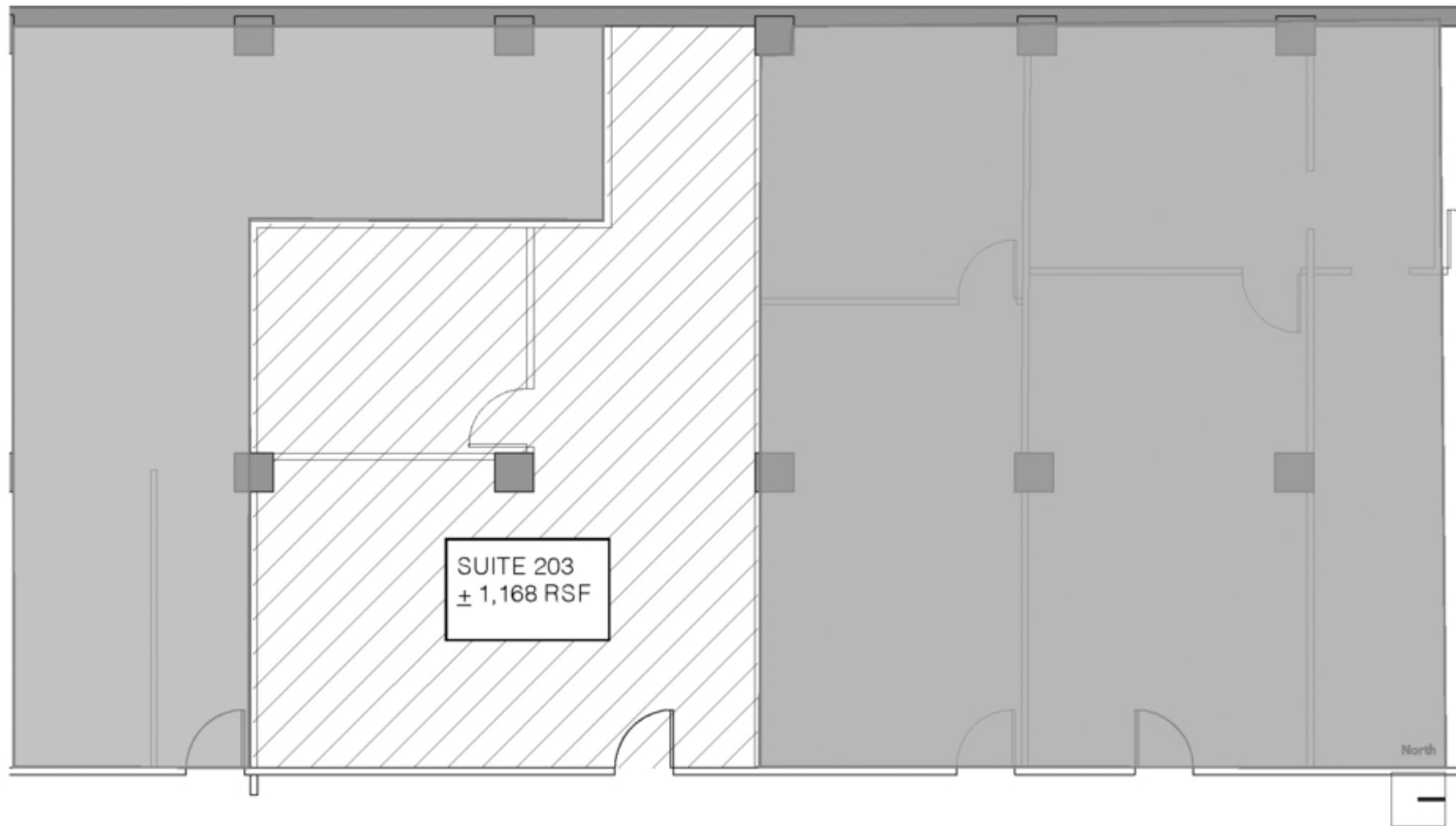


**SUITE 203 - 1,168 RSF**  
27 Maiden Lane





**SUITE 203 - +/-1,168 RSF**



**SECOND FLOOR | SUITE 203**

**27 MAIDEN LANE SAN FRANCISCO, CA**

HATCHED AREAS ARE PROPOSED TENANTS  
FOR REFERENCE ONLY

**MARKETING PLAN**

**2MP-1**

NOT TO SCALE

06.16.14

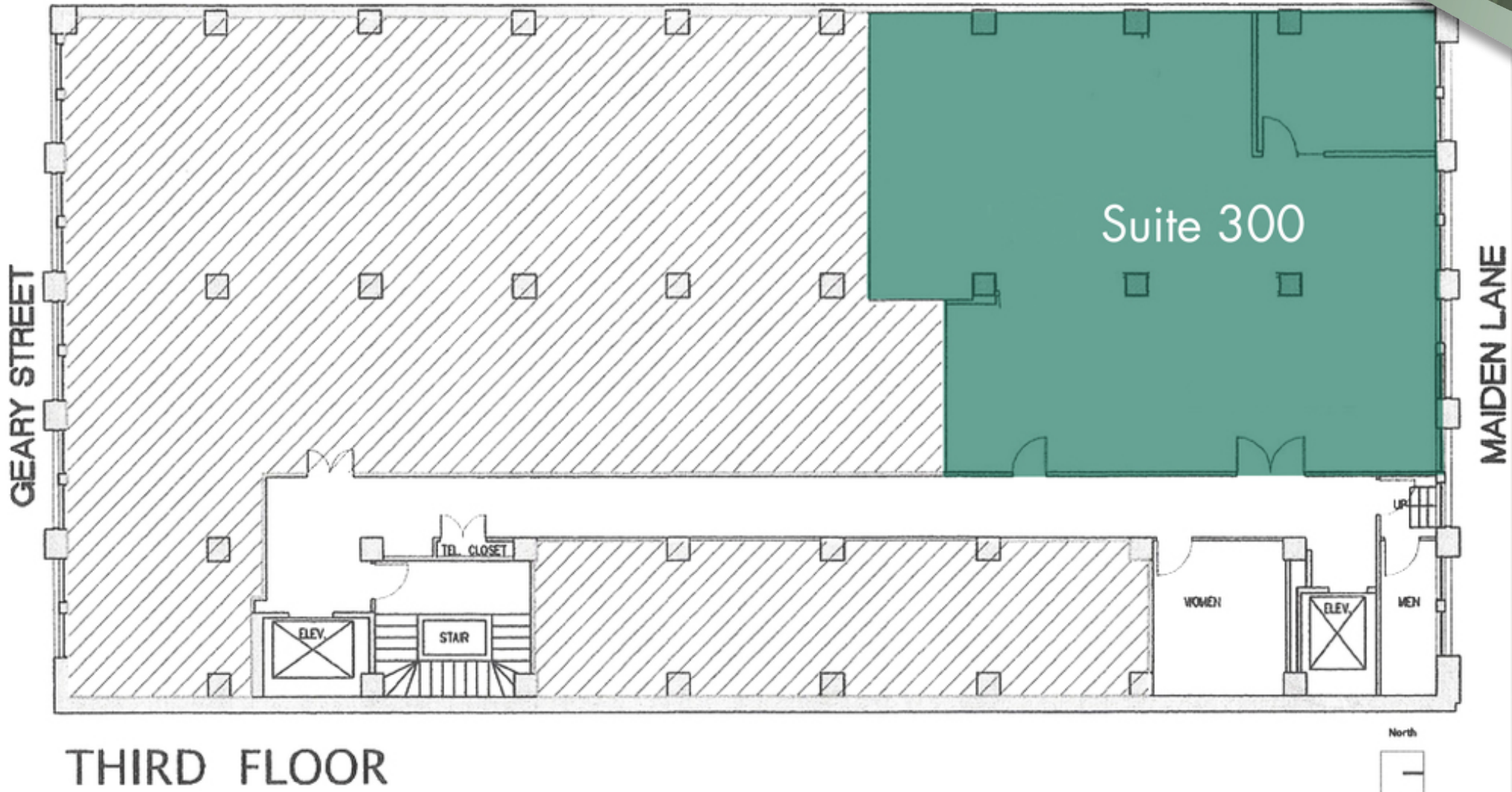


**SUITE 300 - 2,634 RSF**  
27 Maiden Lane





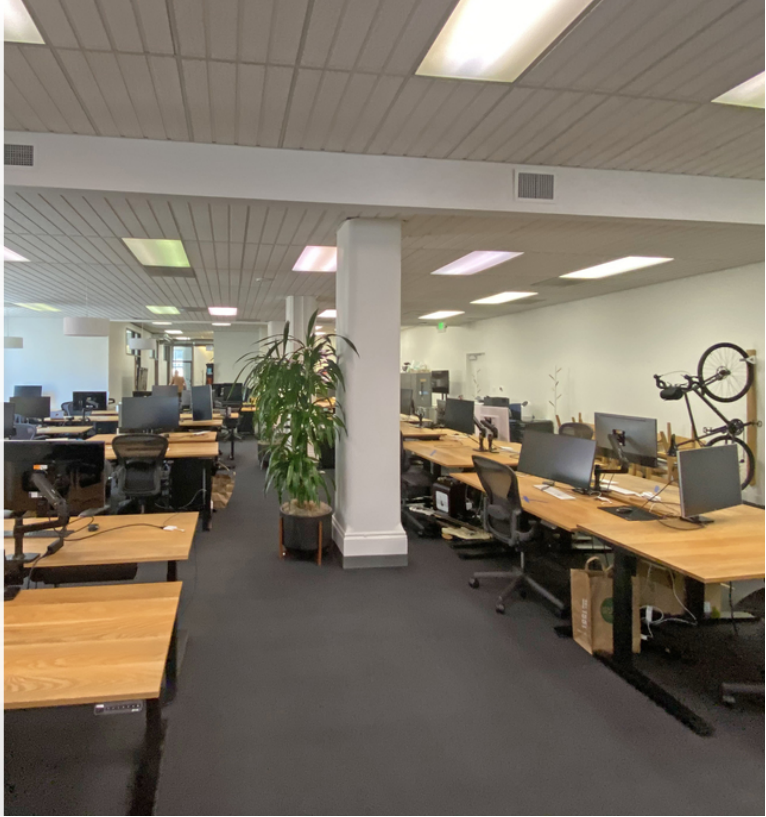
SUITE 300 - +/-2,634 RSF



THIRD FLOOR



**SUITE 500 - 6,842 RSF**  
27 Maiden Lane





**SUITE 500 - 6,842 RSF**  
27 Maiden Lane

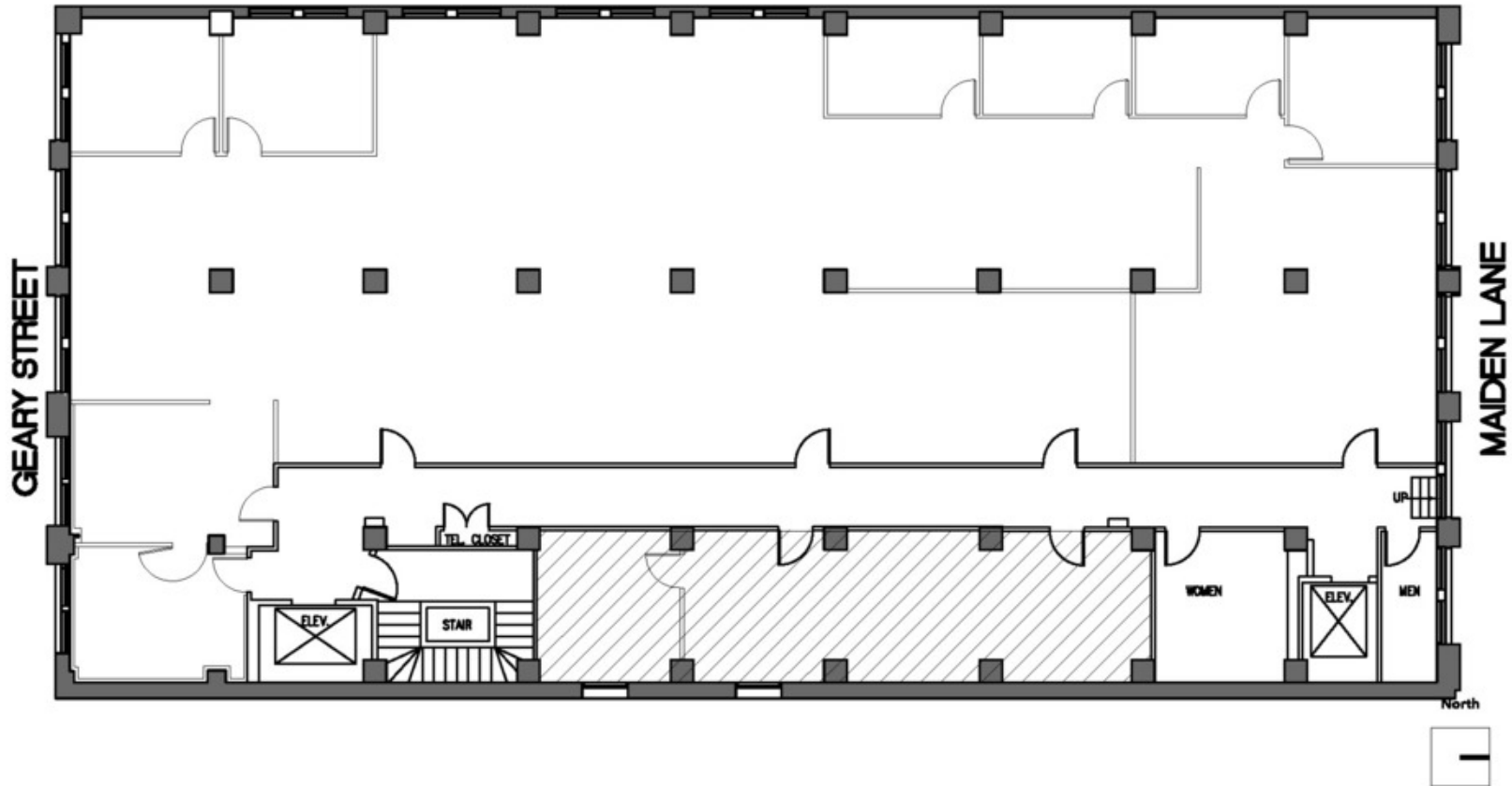




# SUITE 500 - +/-6,842 RSF

# FLOOR PLAN

27 Maiden Lane



FIFTH FLOOR

FOR REFERENCE ONLY

HATCHED AREA IS OCCUPIED

MARKETING PLAN

27 MAIDEN LANE SAN FRANCISCO, CA

5MP-1

NOT TO SCALE

01.30.2020

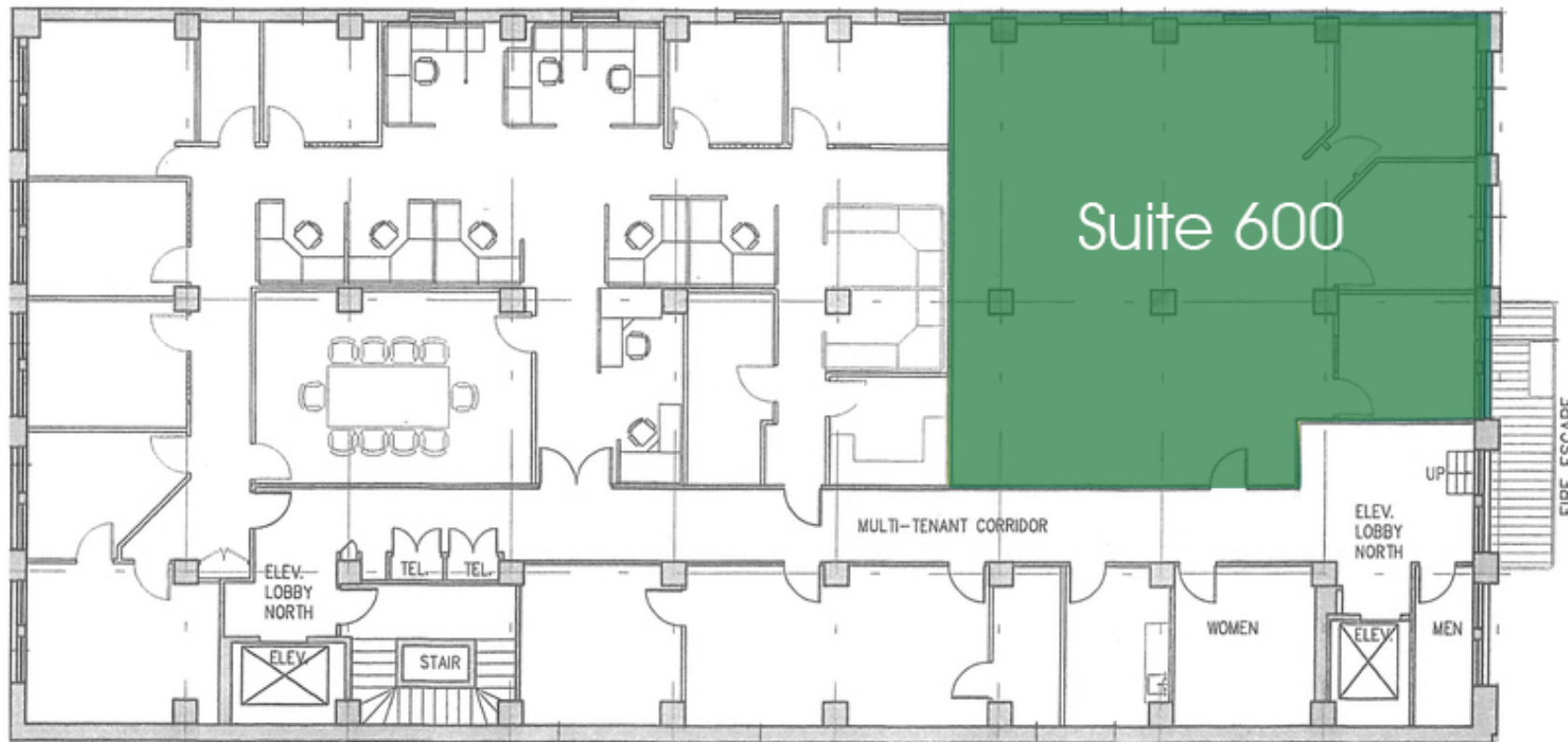
**SUIT 600 - 2,299 RSF**  
27 Maiden Lane





## SUITE 600 - +/- 2,299 RSF

GEARY STREET



MAIDEN LANE



**SUITE 650 - 5,460 RSF**  
27 Maiden Lane

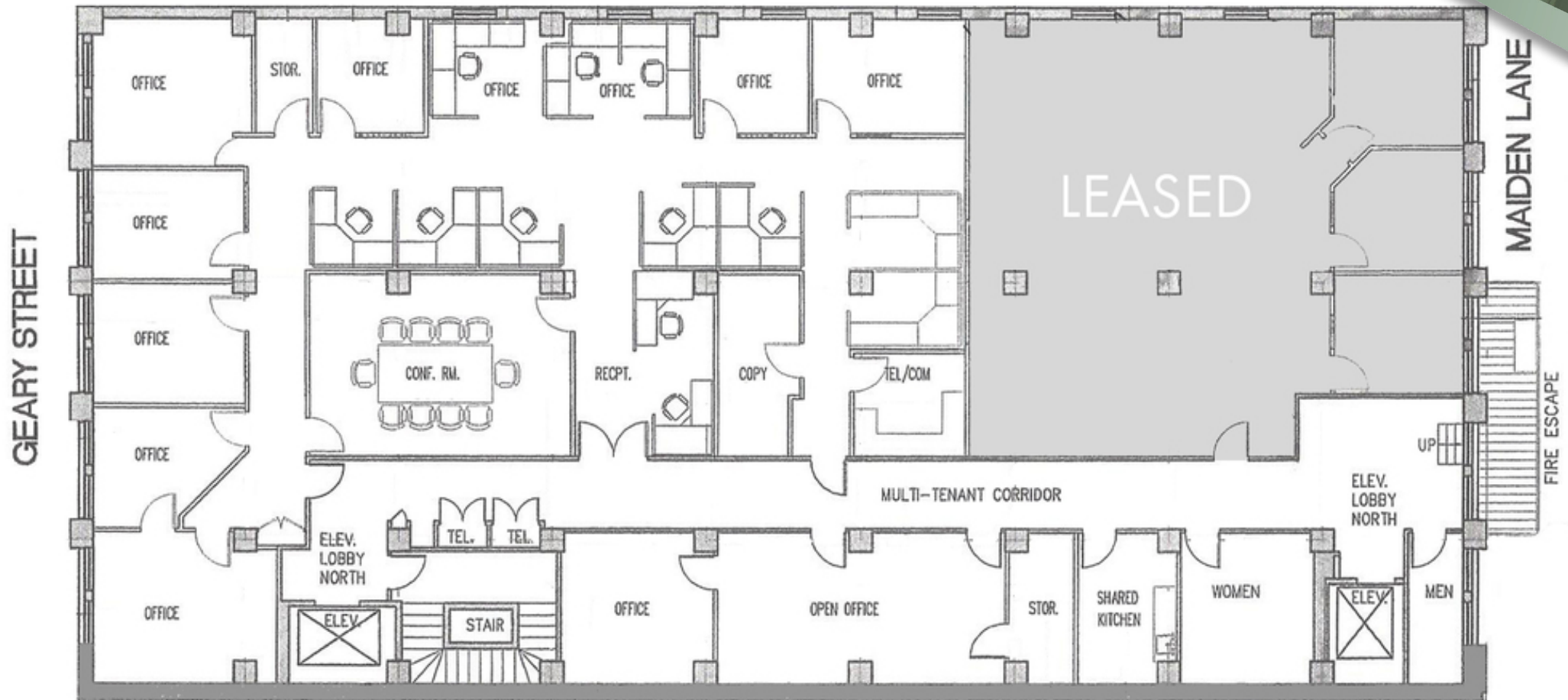




# FLOOR PLAN

27 Maiden Lane

## SUITE 650 - +/- 5,460 RSF



27 MAIDEN LANE SAN FRANCISCO, CA SIXTH FLOOR





**Scott Vix, CCIM | SIOR**

Dir: 415.268.2218

Cell: 415.309.4015

[svix@tricommercial.com](mailto:svix@tricommercial.com)

CalDRE #01407761



**Jean Ko**

Dir: 415.268.2252

Cell: 415.810.1914

[jko@tricommercial.com](mailto:jko@tricommercial.com)

CalDRE #01184706

TRI Commercial Real Estate Services  
71 Stevenson St Ste 1450, San Francisco, CA 94105

Dir: 415.268.2200

Fax: 415.269.2299

[www.tricommercial.com](http://www.tricommercial.com)

