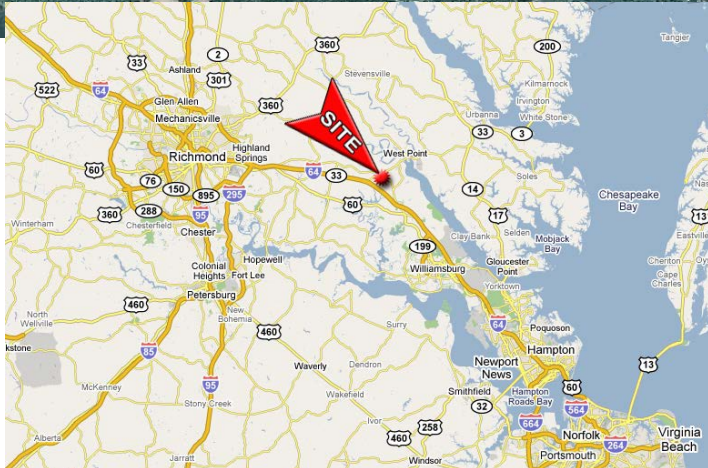
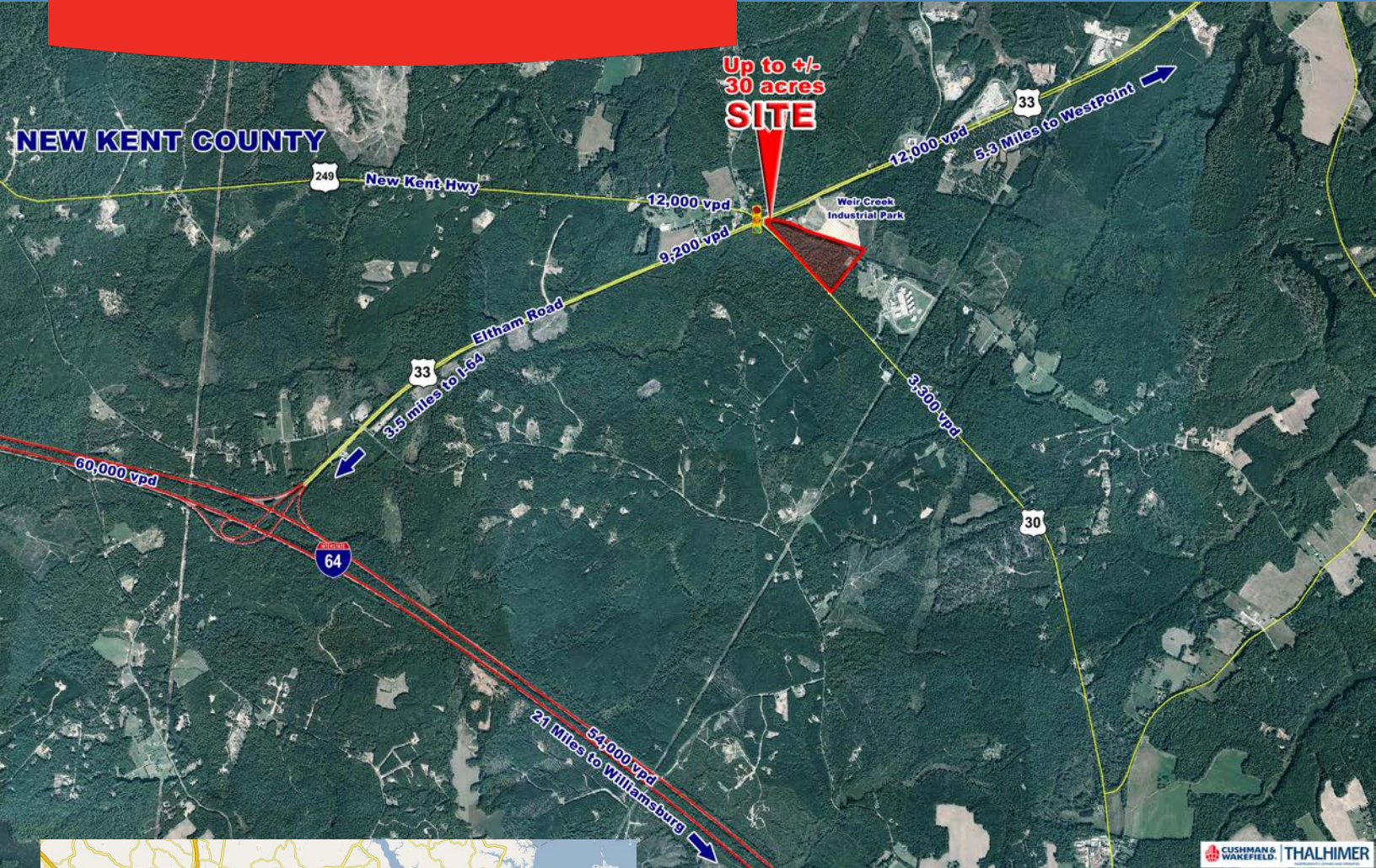


UP TO +/- 30 ACRES
NEW KENT COUNTY, VIRGINIA



LAND FOR LEASE



PROPERTY FEATURES

- Corner commercial site
- Signalized intersection
- Economic Opportunity District
- Utilities nearby
- Will divide
- 24-hour operation possible
- Ideal for convenience store, auto/boat sales, grocery, office warehouse

DEMOGRAPHICS	3 MILE	5 MILE	10 MILE
ESTIMATED POPULATION	1,523	7,504	27,625
AVG. HH INCOME	\$93,124	\$81,082	\$73,591

For more information, please contact:

PETE WALDBAUER
(804) 697 3564
pete.waldbauer@thalhimer.com

CUSHMAN & WAKEFIELD | THALHIMER
Thalhimer Center
11100 W. Broad Street
Glen Allen, VA 23060
www.thalhimer.com

Although the information contained herein was provided by sources believed to be reliable, Thalhimer makes no representation, expressed or implied, as to its accuracy and said information is subject to errors, omissions or changes.

DESIGN FOR CONCEPTUAL USE ONLY



For more information, please contact:

PETE WALDBAUER
(804) 697 3564
pete.waldbauer@thalhimer.com

CUSHMAN & WAKEFIELD | THALHIMER
Thalhimer Center
11100 W. Broad Street
Glen Allen, VA 23060
www.thalhimer.com