

203 WEST 125TH STREET

BETWEEN FREDRICK DOUGLASS AND ADAM CLAYTON POWELL BOULEVARDS | HARLEM



203 WEST 125TH STREET

BETWEEN FREDRICK DOUGLASS AND ADAM CLAYTON POWELL BOULEVARDS | HARLEM

SIZE

Ground Floor

1,500 SF

FRONTAGE

20'

CEILING HEIGHT

12'

ASKING RENT

Upon Request

POSSESSION

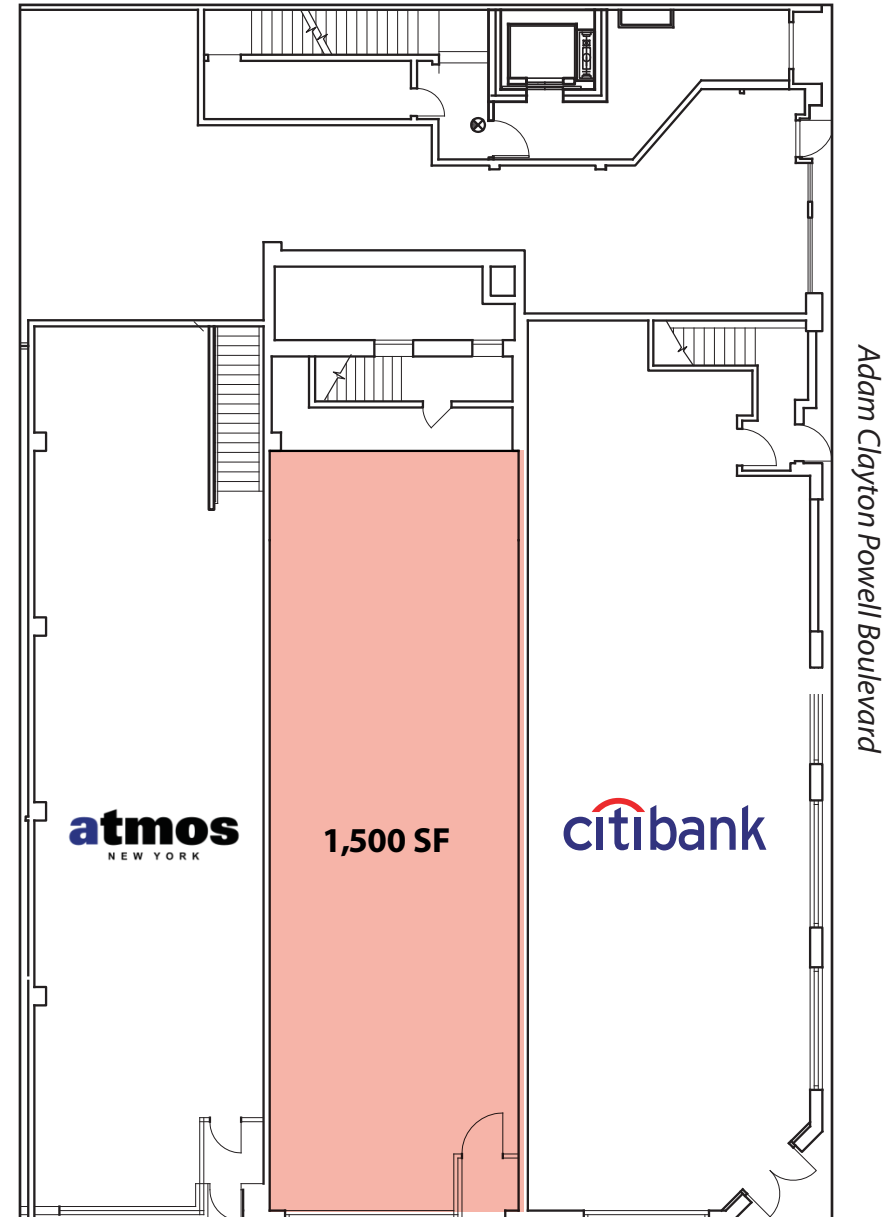
Immediate

TRANSPORTATION



COMMENTS

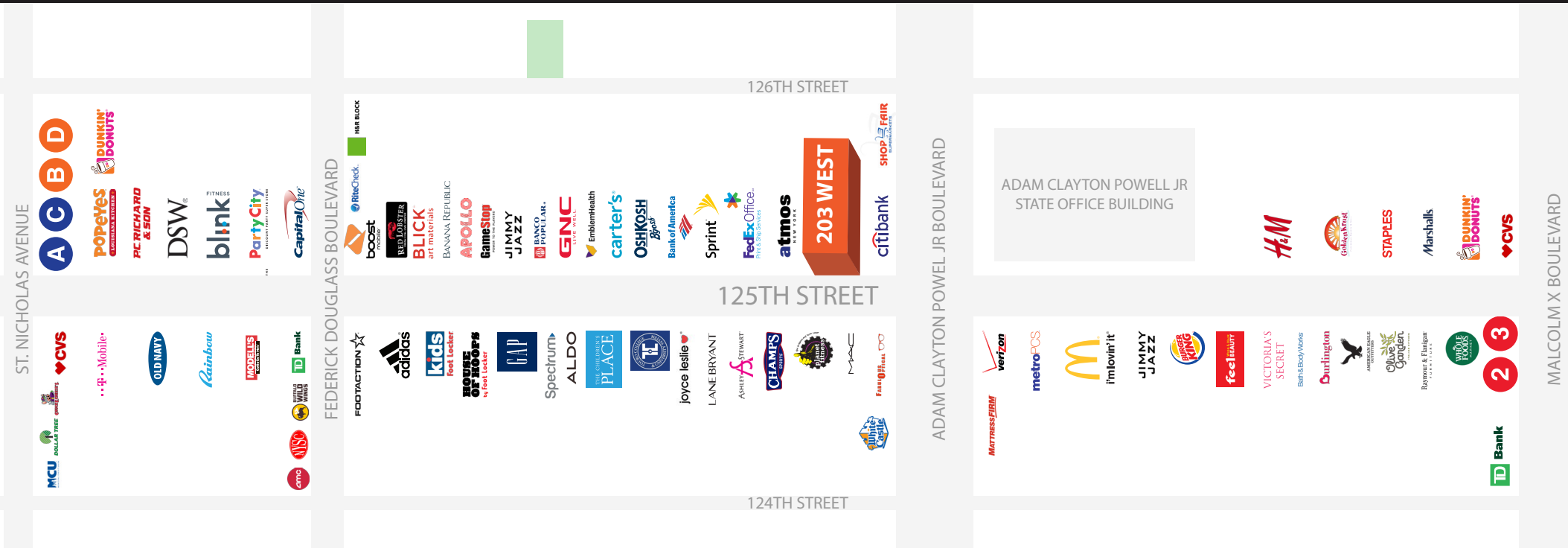
- In the heart of the food, entertainment and shopping corridor of Harlem
- Down the block from the historic Lowe's Victoria Theater at the base of a new Marriott Renaissance and an adjacent affordable apartment tower
- Down the block from the historic Apollo Theater
- Basement available
- All uses considered



West 125th Street

203 WEST 125TH STREET

BETWEEN FREDRICK DOUGLASS AND ADAM CLAYTON POWELL BOULEVARDS | HARLEM



ST. NICHOLAS AVENUE



FREDRICK DOUGLASS BOULEVARD

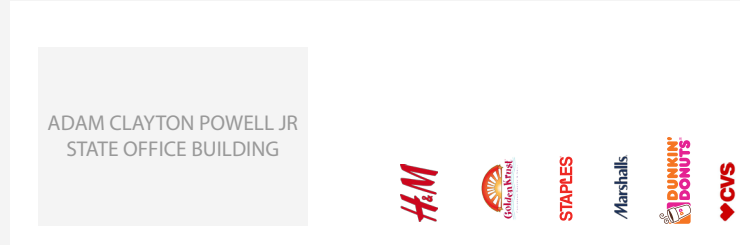


126TH STREET

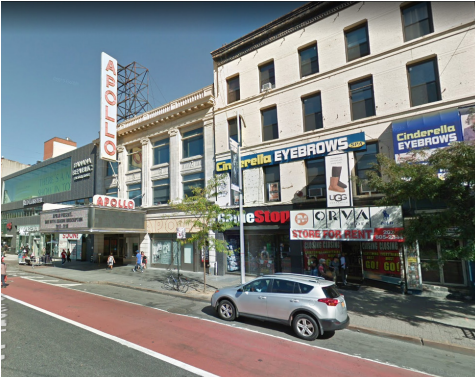
125TH STREET

124TH STREET

ADAM CLAYTON POWELL JR BOULEVARD



MALCOLM X BOULEVARD



KASSIN SABBAGH REALTY
 1385 Broadway 22nd floor
 New York, NY 10018
 (212) 417 - 9217
 www.ksrny.com

SOLOMON SHARABY
 SSharaby@ksrny.com
 718.986.7149

ALBERT MANOPLA
 AManopla@ksrny.com
 212.380.8369

SHOLOM KANEVSKY
 SKanevsky@ksrny.com
 212.380.8369

CONTACT OUR BROKER(S) FOR MORE INFORMATION

All information supplied in this marketing presentation and/or flyer is from sources deemed reliable and is furnished subject to errors, omissions, modifications, removal of listings from sale/lease and to any listing conditions. Any square footage, dimensions, floor plans and/or technical data set forth are approximations and are subject to further elaboration/confirmaton.