

One State Street

PROVIDENCE, RI

Directly across from the Rhode Island State House, One State Street is in walking distance to all the shops & restaurants of Downtown Providence. The Building features City Views, a Park-like Setting, 24/7 Secure Access, Onsite Parking, Marble & Granite entryway, and Large, Openable Windows.

Ideally situated with convenient access to the State House, Downtown, Residential Areas, College Hill, Providence Station, Commuter Rail, Amtrak, I-95, all of Providence & beyond.



Highly rated by Walk Score®: “VERY WALKABLE” and “VERY BIKEABLE” with “EXCELLENT TRANSIT.”

Available Suites:

3,000 RSF to 6,000 RSF on the 6th Floor | 9/1/2023

- Large Windows & Natural Light
- Amazing City Views
- Full-floor Identity, Top Floor
- 8 Private Offices
- Meeting Rooms
- Collaboration Space
- Reception Area
- Kitchenette
- 24/7 Secure Access
- Included, Onsite Parking
- Marble Restrooms
- Direct Elevator Access

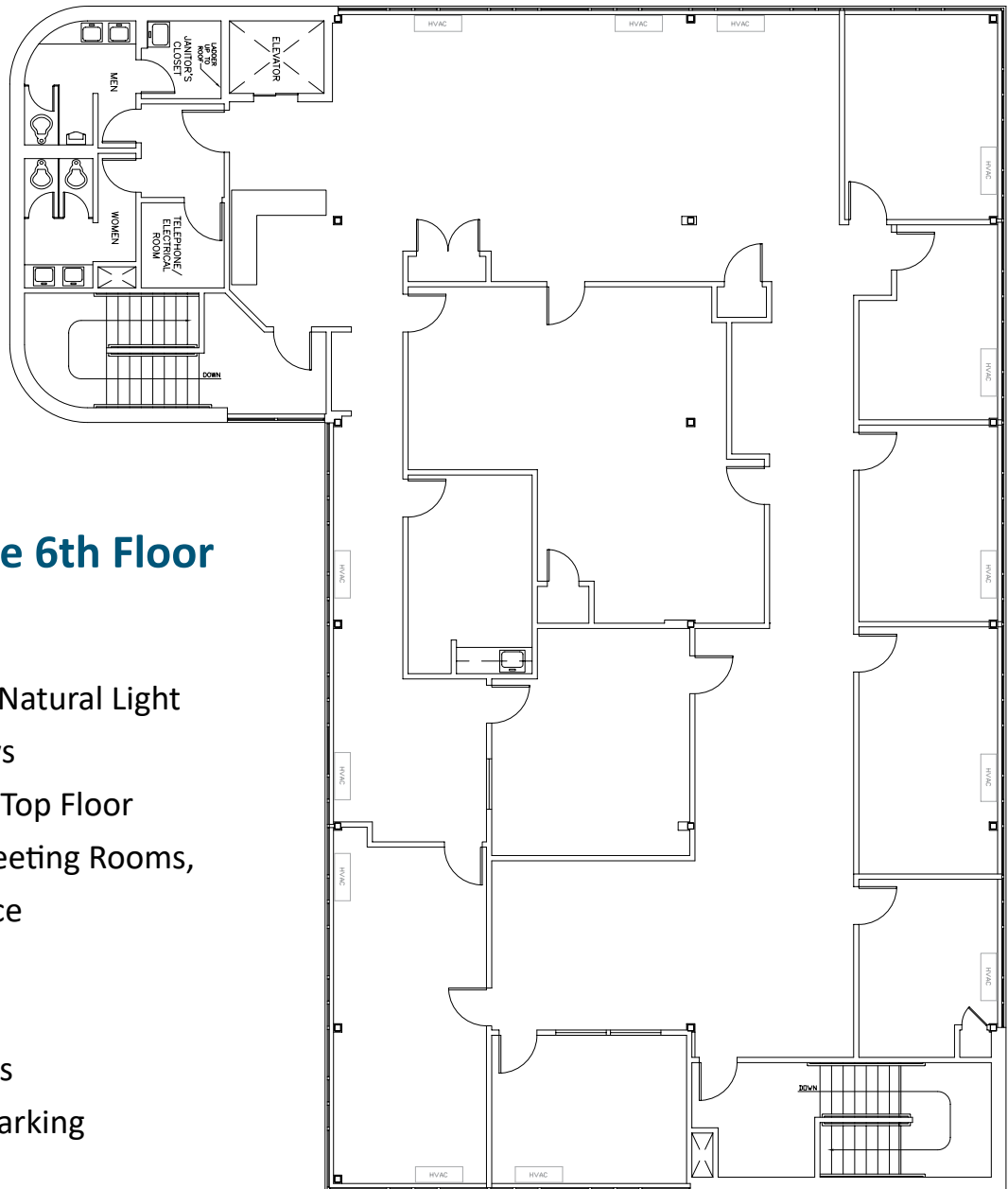


Building Amenities

RI State House Location | City Views | Large, Openable Windows | Marble & Granite Entryway | Onsite Parking | Park-like Setting | Marble Restrooms | Air Conditioning | 24/7 Property Management | 24/7 Secure Access | Walking Distance to Downtown Providence Shops & Restaurants | Quick Access to I-95, Providence Station, Residential Neighborhoods, Downtown, all of Providence & Beyond

One State Street

PROVIDENCE, RI



6,000 RSF on the 6th Floor (divisible to 3,000 RSF)

Available 9/1/2023

- Large Windows & Natural Light
- Amazing City Views
- Full-floor Identity, Top Floor
- Private Offices, Meeting Rooms, Collaboration Space
- Reception Area
- Kitchenette
- 24/7 Secure Access
- Included, Onsite Parking

One State Street

PROVIDENCE, RI

In the Center of It All



Surrounding Businesses & Attractions Include:

Freeman Plat & Oakland Avenue | Historic Districts | Whole Foods Market | Providence Station | RI State House | RI Depts. of Education, Health, Transportation, Administration | Rhode Island Convention Center | Dunkin' Donuts Center Event Venue | BankNewport City Center | Providence Performing Arts Center | The Strand Ballroom Concert Hall | RISD & RISD Museum | Brown University | Johnson & Wales University | Memorial Park | Burnside Park | Waterplace Park | Providence River Walk | The Capitale Grille | Hemenway's Circe Restaurant & Bar | Jacky's Waterplace & Sushi Bar | Murphy's Massimo Ristorante Rooftop at the Providence G | Rogue Island Kitchen & Bar | Providence Coal Fired Pizza