

**AVISON
YOUNG**



LAND FOR SALE

REDUCED ASKING PRICE

Parkway Village Outparcel

107 Oleander Drive
Clayton, NC 27527

Partnership. Performance.

Opportunity

One .78 acre outparcel for sale in Clayton's Parkway Village. Zoned PUD—Planned Unit Development— this parcel is located on NC Hwy 42 East in Clayton. Water and sewer along NC Hwy 42. Strong demographics in a growing residential sector.

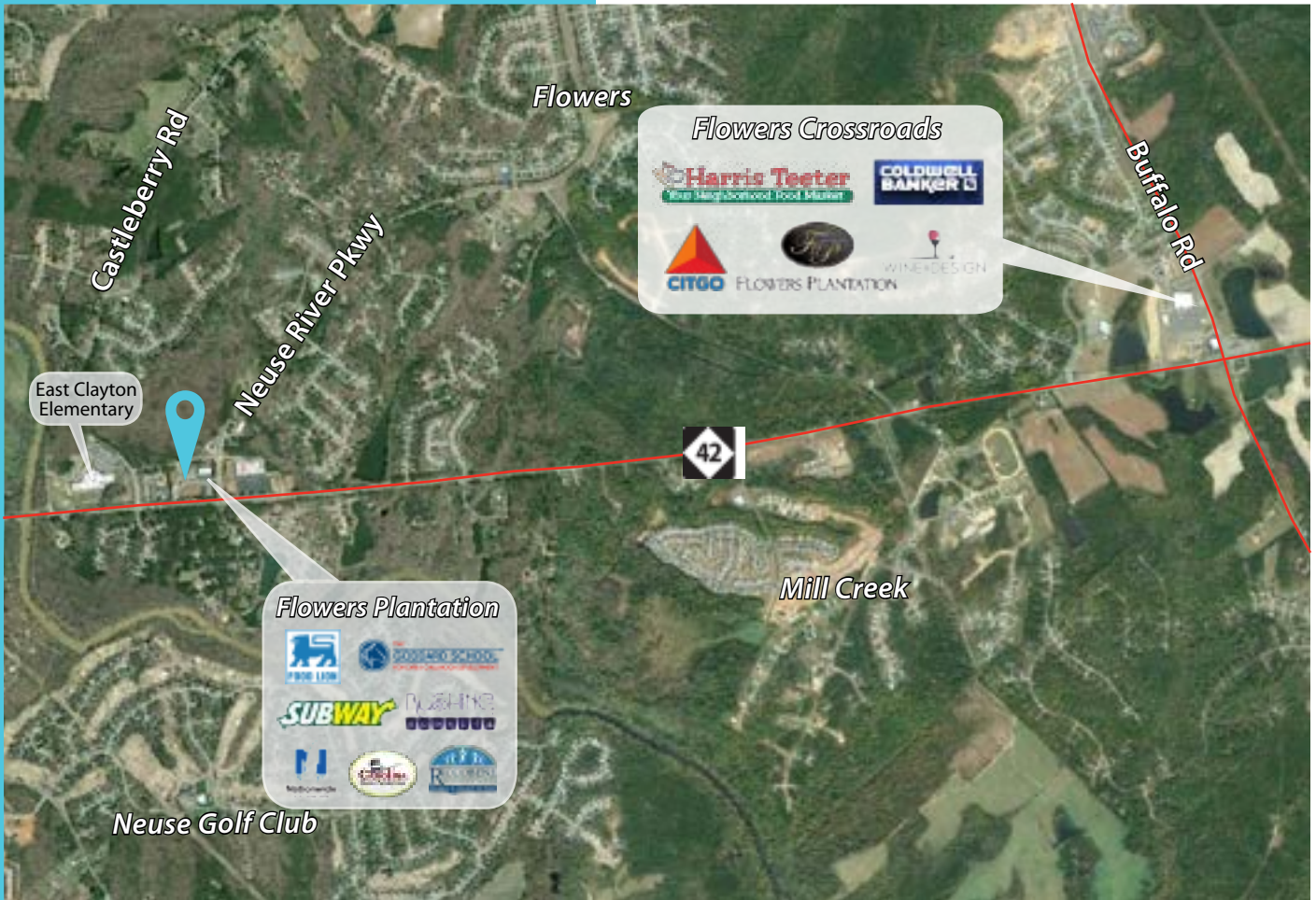
167900-81-8605 – 0.78 Acre

Asking Price: \$115,000



Justin Booth
Senior Associate
919.866.4262
justin.booth@avisonyoung.com

Jon Bradley
Senior Associate
919.420.1567
jon.bradley@avisonyoung.com



Parkway Village Outparcel

107 Oleander Drive
Clayton, NC 27527

Highlights

- Located in Clayton's newest development, Flowers Plantation
- Close to East Clayton Elementary School, River Dell Elementary School, walking trails and a neighboring pool
- Adjacent to Food Lion anchored retail center
- Multiple points of ingress and egress

Demographics

	1 Mile	3 Miles	5 Miles
2015 Total Population	4,647	15,468	40,964
Total Households	1,541	5,211	14,586
Average HH Income	\$115,021	\$101,592	\$82,823



Justin Booth
Senior Associate
919.866.4262
justin.booth@avisonyoung.com

Jon Bradley
Senior Associate
919.420.1567
jon.bradley@avisonyoung.com