

FOR SALE OFFICE - MEDICAL BUILDING



**675 DOUGLAS AVENUE
ALTAMONTE SPRINGS, FL**

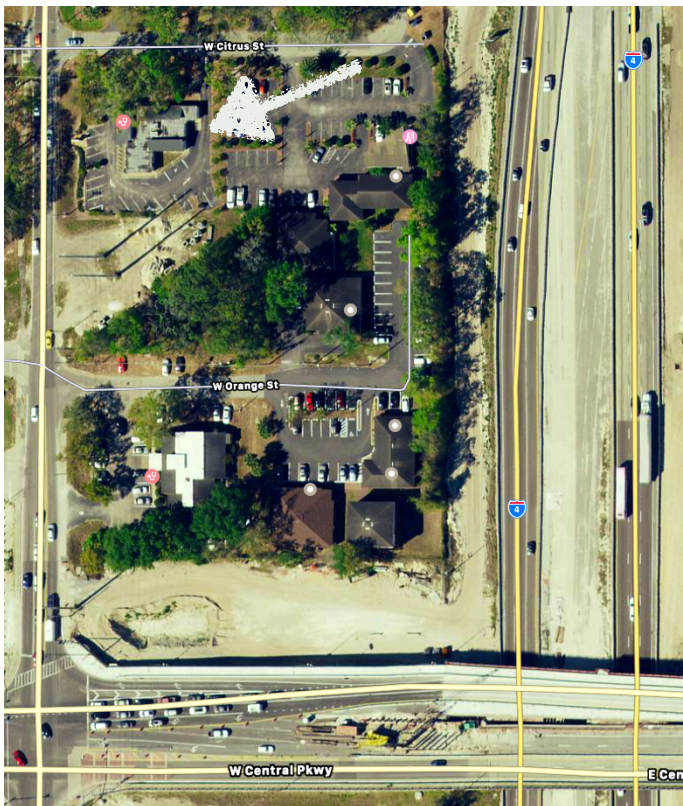
BUILDING: 3071 SF
LOT SIZE: 20,702 SF
.48 ACRES
PARKING: 21 SPACES
YR BUILT: 1979

ZONING: OP-SEM. CO.
FLU: OFFICE

140 FF ON DOUGLAS AVE
147 FF ON CITRUS STREET

TRAFFIC COUNTS

DOUGLAS AVE: 18,522 VPD
E CENTRAL PKWY: 20,701 VPD



Located on the SE corner of Douglas Ave and W Citrus St, just North of E Central Parkway. Former uses include medical and real estate offices.

\$525,000

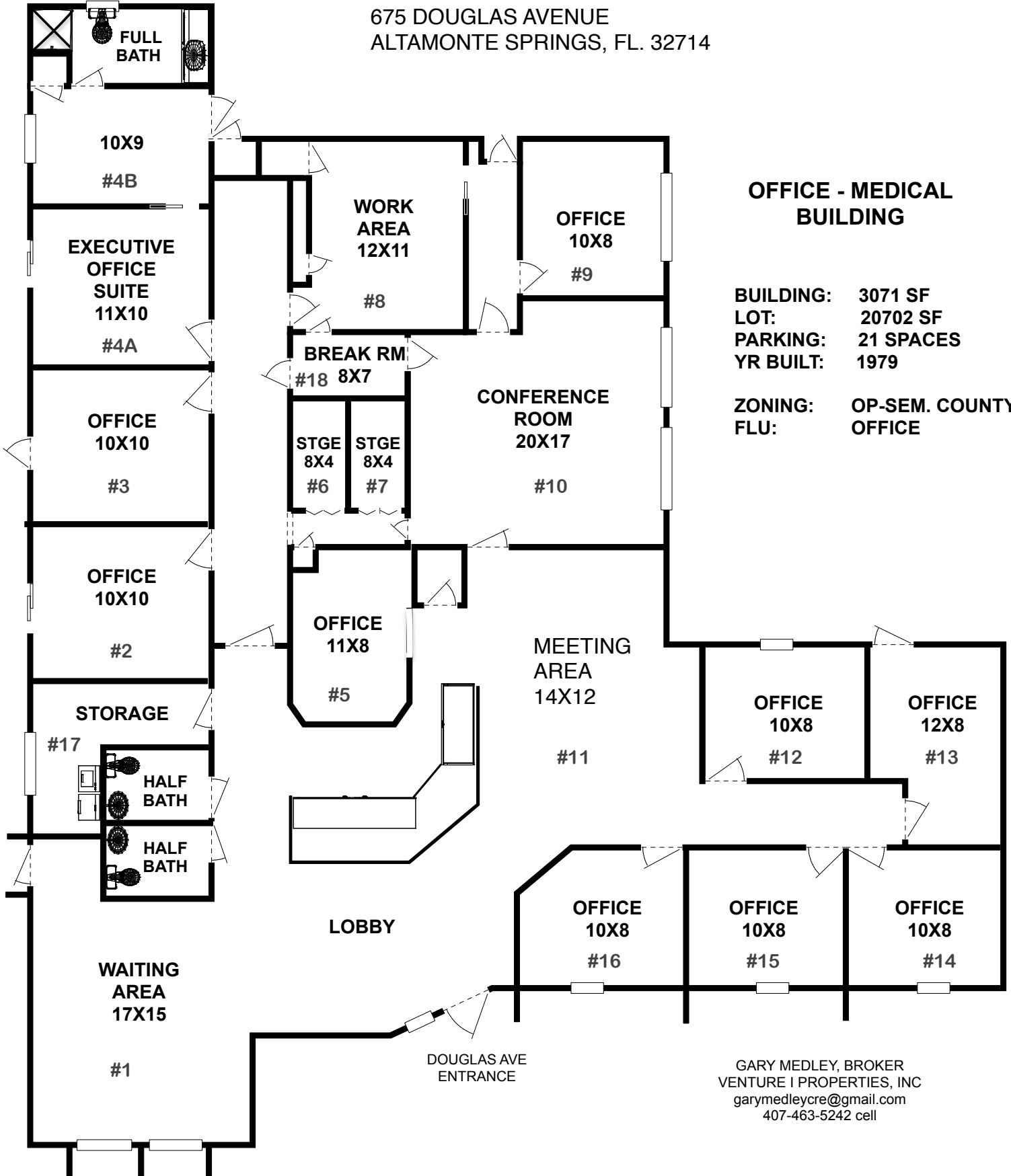
GARY MEDLEY, BROKER
VENTURE I PROPERTIES, INC
garymedleycre@gmail.com
407-463-5242 cell
www.garymedley.com

All information contained herein was obtained from sources deemed reliable but is not warranted as to its accuracy and reliability by Venture I Properties, Inc., its agents and/or employees. All Prospective Purchasers are advised to personally verify all information contained herein.

EXHIBIT "B"



675 DOUGLAS AVENUE
ALTAMONTE SPRINGS, FL. 32714



OFFICE - MEDICAL BUILDING

BUILDING: 3071 SF
LOT: 20702 SF
PARKING: 21 SPACES
YR BUILT: 1979

ZONING: OP-SEM. COUNTY OFFICE
FLU:

GARY MEDLEY, BROKER
 VENTURE I PROPERTIES, INC
 garymedleycre@gmail.com
 407-463-5242 cell

THIS DRAWING IS NOT TO SCALE AND IS FOR REFERENCE PURPOSES ONLY. IT SHALL NOT BE CONSTRUED AS ACCURATE OR CORRECT WITHOUT INDEPENDENT VERIFICATION BY PROSPECTIVE PURCHASER OR TENANT.