

- ±1.89 acres – former truck storage yard on North side
- ±60% stabilized to a depth of ±1'
- Excellent access to Beltway 8 & I-45 via SH 249, Antoine & N. Houston- Rosslyn
- Near many heavy industrial users
- Asking price: \$240,000

For more information, contact:

B. Kelley Parker III, SIOR
(713) 963 2896
Kelley.Parker@cushwake.com

John F. Littman, SIOR
(713) 963 2862
John.Littman@cushwake.com

Coe Parker, SIOR
(713) 963 2825
Coe.Parker@cushwake.com

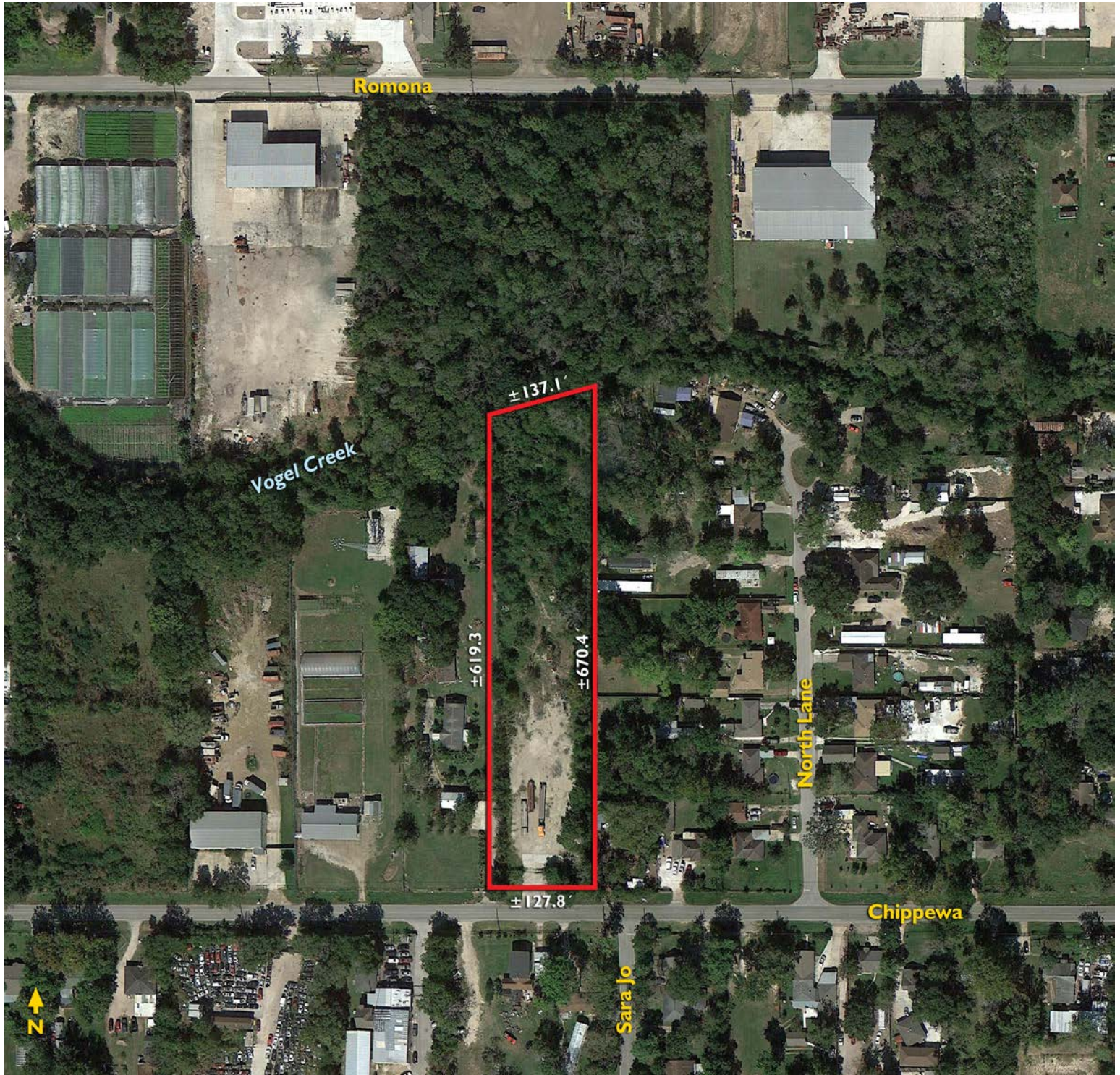
Cushman & Wakefield
Licensed Real Estate Brokers
1330 Post Oak Boulevard, Suite 2700
Houston, TX 77056
www.cushmanwakefield.com



6400 CHIPPEWA

Houston, Texas 77086

Land for Sale



For more information, contact:

B. Kelley Parker III, SIOR
(713) 963 2896
Kelley.Parker@cushwake.com

John F. Littman, SIOR
(713) 963 2862
John.Littman@cushwake.com

Coe Parker, SIOR
(713) 963 2825
Coe.Parker@cushwake.com

Cushman & Wakefield
Licensed Real Estate Brokers
1330 Post Oak Boulevard, Suite 2700
Houston, TX 77056
www.cushmanwakefield.com