

LINCOLN-BELMONT-ASHLAND

3128 N. ASHLAND



3,885
Square feet available

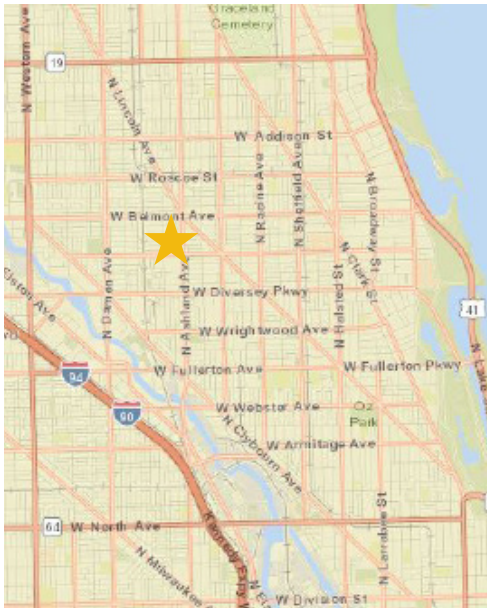


72'
Approximate Ashland Avenue frontage



49.6K
Daytime population in one-mile radius

20,000 SF with Surface Parking in Heart of Lakeview



PROPERTY DESCRIPTION

Prominent endcap space available, up to 20,000 sf adjacent to 63 car parking lot. Located in the heart of Lakeview just west of Wrigley Field, Lakeview has become a neighborhood of young couples and families.

AVAILABLE SPACE

3,885 sf endcap

TRAFFIC COUNTS

28,500 vehicles per day on Ashland Avenue
16,500 vehicles per day on Belmont Street
13,000 vehicles per day on Lincoln Avenue

AREA RETAILERS



Signalized intersection



\$176K

Household income in a one-mile radius



265K

Total population in a two-mile radius



28.5K

Vehicles per day on Ashland Street

	1 MILE	2 MILE	3 MILE
POPULATION	68,979	265,117	540,855
AVERAGE HH INCOME	\$176,839	\$139,429	\$124,157
DAYTIME POPULATION	49,693	183,866	385,285

EXCLUSIVE AGENTS

Jason Gustavson 312/372-2688
jason@stonerealestate.com

William Winter 312/878-9445
wwinter@stonerealestate.com

STONE REAL ESTATE

LINCOLN-BELMONT-ASHLAND

3128 N. ASHLAND



EXCLUSIVE AGENTS

Jason Gustaveson 312/372-2688
jason@stonerealestate.com

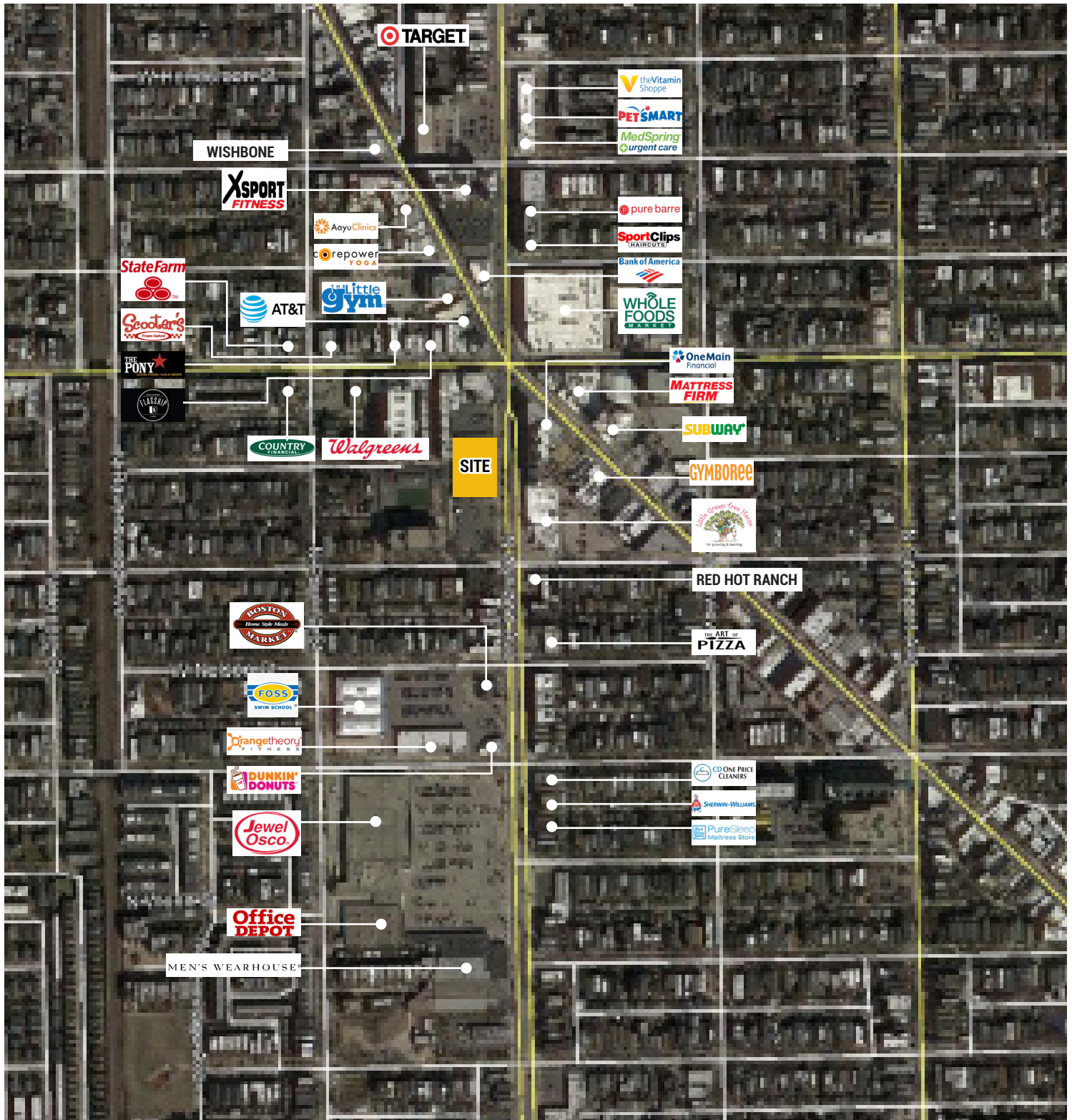
William Winter 312/878-9445
wwinter@stonerealestate.com

STONE
REAL ESTATE

STONE REAL ESTATE

LINCOLN-BELMONT-ASHLAND

3128 N. ASHLAND



EXCLUSIVE AGENTS

Jason Gustavson 312/372-2688
jason@stonerealestate.com

William Winter 312/878-9445
wwinter@stonerealestate.com

STONE
REAL ESTATE