



Industrial For Lease

Property Name: Lyon Distribution Center II
Location: Grand River Avenue
City, State: Lyon Twp., MI
Cross Streets: South Hill Rd.
County: Oakland
Zoning: I-2

BUILDING SIZE / AVAILABILITY

Total Building Sq. Ft.: 150,000
Available Sq. Ft.: 75,000 - 150,000

Building Type: New Const.
Available Shop Sq. Ft.: 75,000 - 150,000
Available Office Sq. Ft.: To Suit

Mezzanine: N/A
Office Dim: N/A
Shop Dim: N/A

PROPERTY INFORMATION

Clear Height: 36'
Grade Level Door(s): 2: 13 x 14
Truckwells or Docks: 16
Exterior Construction: N/A
Structural System: N/A
Air-Conditioning: Yes
Heating: Yes
Availability: Immediately
Power (Amps/Volts): N/A

Multi-Tenant: Yes
Rail: No
Security: No
Interior: No
Lighting: N/A
Bay Sizes: 50' x 60'
Restrooms: Yes
Cranes: No
Parking: 295

Year Built: 2022
Sprinklers: Yes
Signage: Yes
Exterior: No
Roof: Membrane
Floors: 6"
Floor Drains: No
Acreage: 20.150
Land Dimensions: N/A

PRICING INFORMATION

Lease Rate: Contact Broker
Lease Type: Contact Broker
Lease Term: N/A

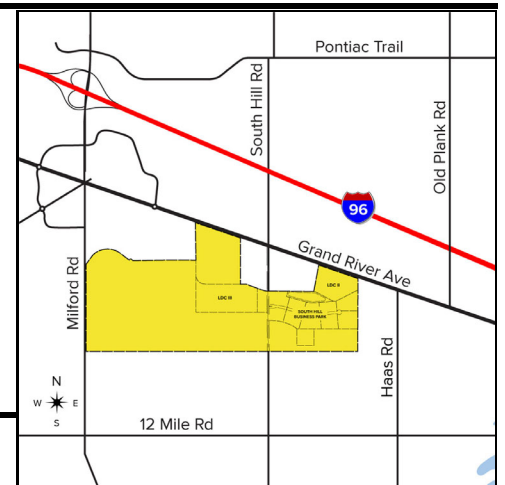
Mthly Rate: Contact Broker
Taxes: TBD
Parcel #: 21-03-451-003
Imprv Allow: N/A

TD: N/A
Deposit: N/A
Assessor #: N/A
Options: N/A

Tenant Responsibility: N/A

COMMENTS

Lyon Distribution Center II - 75,000 - 150,000 sq. ft. available immediately. Ready for tenant improvements. State-of-the-art building with Grand River Avenue frontage. Trailer parking on-site. For more information visit: <http://www.lyondistributioncenter.com>.



Broker: SIGNATURE ASSOCIATES

Agent(s):

Steve Gordon, (248) 948-0101, sgordon@signatureassociates.com