

# FOR LEASE

# 5555 Lakeview Offices



***CLASS A CONCRETE AND STEEL***

***100% COVERED PARKING***

***ADJACENT TO CARILLON POINT  
AMENITIES***

***METICOULOUSLY MAINTAINED***

***WESTERN VEIWS OF LAKE  
WASHINGTON AND SEATTLE SKYLINE***

- 3,217 RSF - Suite 201
- Ten (10) perimeter private offices, reception with built in desk, conference, kitchen, server
- Suite 201 – 13 stalls @ \$75/stall/mo.
- Available 4/1/21 or possibly sooner. NOT FOR SALE.
- \$38.00 PSF, NNN (est. \$12.00 PSF)



For more information please contact:

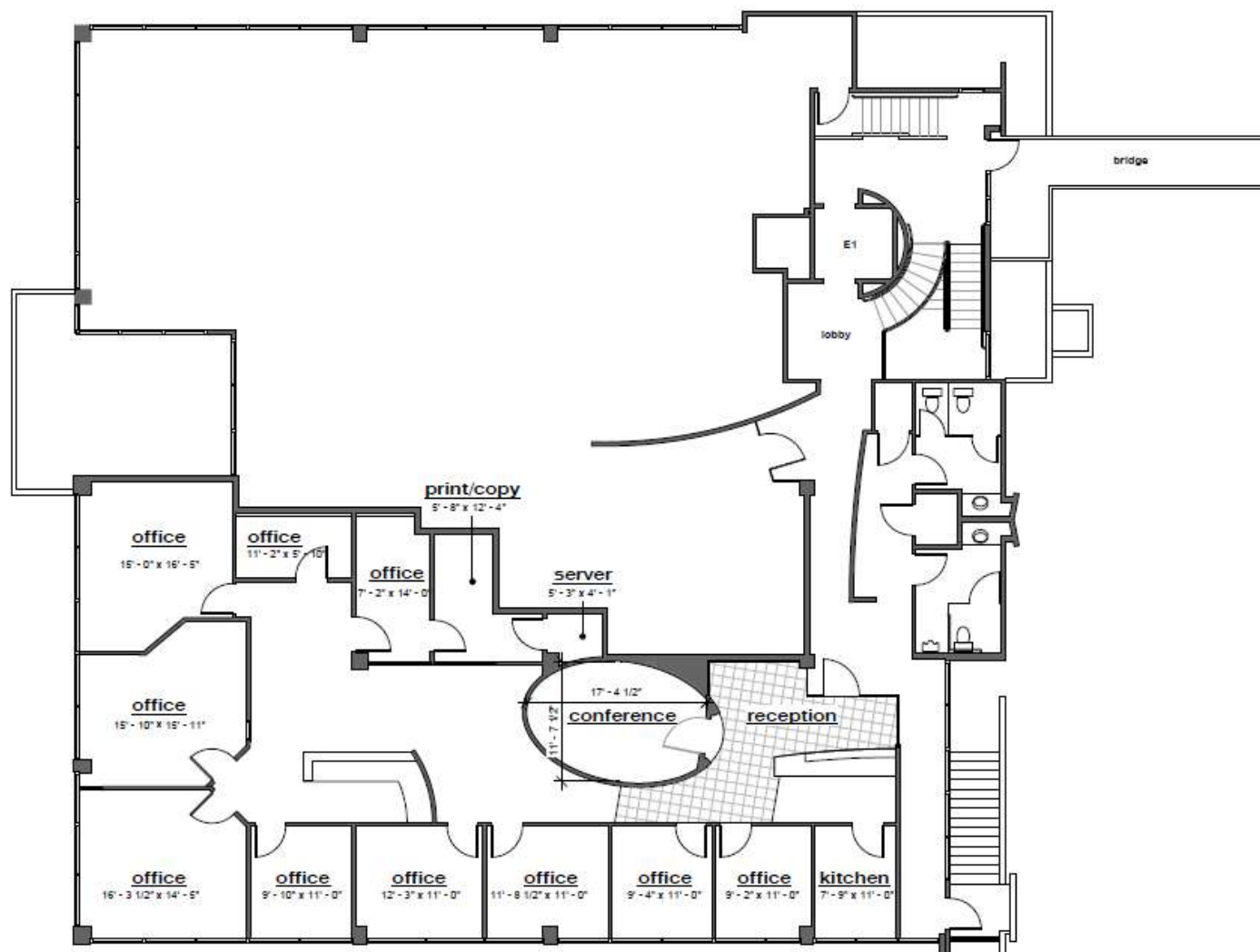
**Brent Nelson**

**425.455.2664**

**[brent@saratogaequities.com](mailto:brent@saratogaequities.com)**



**SARATOGA  
EQUITIES**



- ❖ **Ten (10) private offices (3 executive), reception with built in desk, conference, kitchen, server room**
- ❖ **Private southwest corner of building. Shared floor with only one other tenant.**
- ❖ **Rare sized suite for Kirkland submarket**
- ❖ **Western/southern views of Lake Washington & Seattle Skyline**
- ❖ **Access to numerous retail amenities and Kirkland Parks, Cross Corridor bike/walk path and proximity to Carillon and Houghton amenities, Google's Kirkland campus, Kirkland Urban, and South Kirkland Park& Ride and four major grocery stores.**

