

LAND

SALE



COLDWELL
BANKER
COMMERCIAL

CAPITAL ADVISORS

NEC 111TH & INDIANA
LUBBOCK, TX 79423



NEARBY TENANTS (1 MILE)

PROPERTY INFORMATION



LOCATION: This property is located east of Indiana Avenue on the North side of 111th Street in Lubbock, TX.

DESCRIPTION: Two tracts of land available in growing south Lubbock. These tracts are located on the south end of this soon to be developed tract. Businesses within 1-mile include Walmart, United Supermarkets, Kohl's, The UPS Store, First United Bank and more.

SIZE: Tract A: 2.1 Acres
Tract B: 2.1 Acres

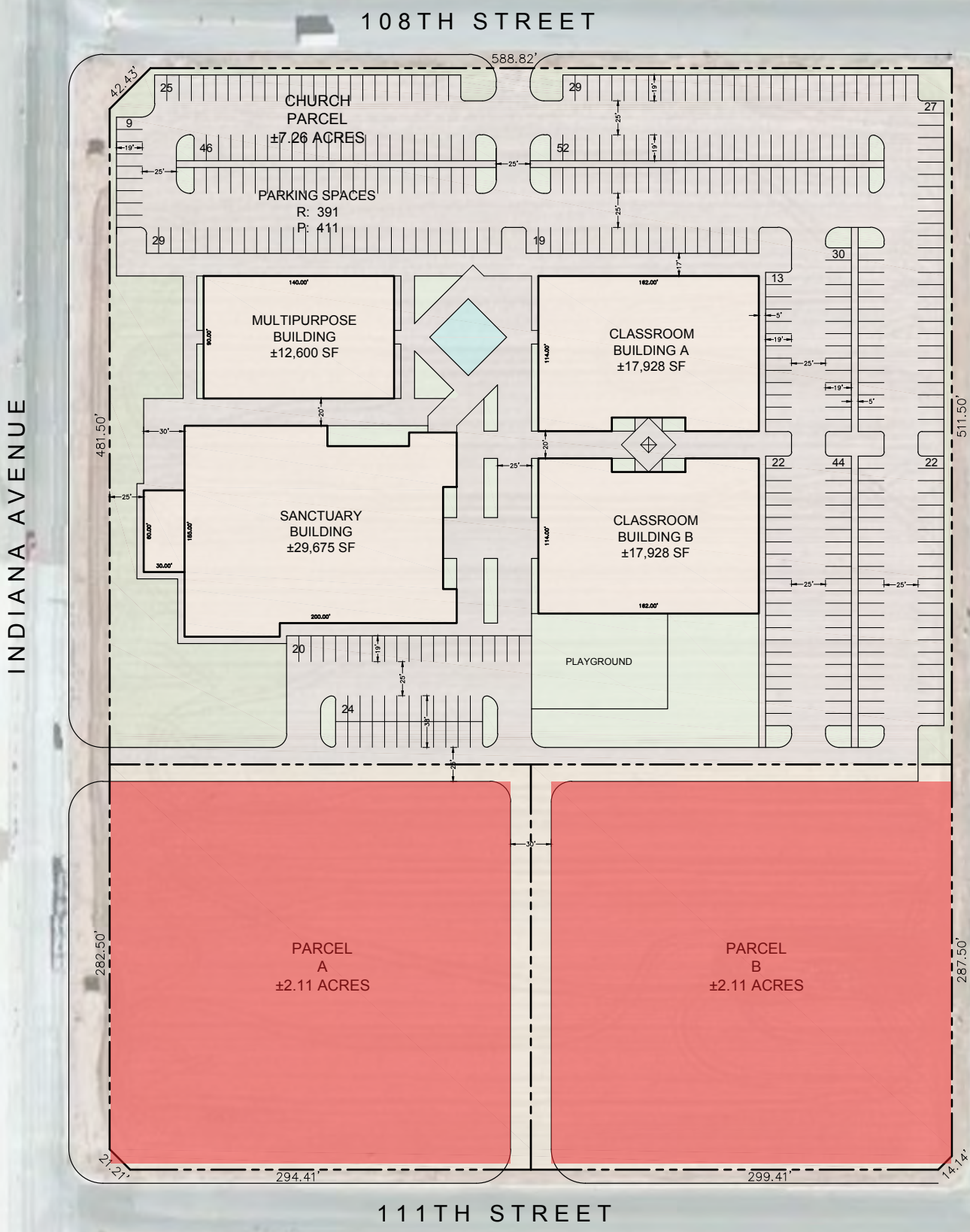
PRICE: Tract A: \$10.00 per square foot
Tract B: \$6.00 per square foot

CBCCapitalAdvisors.com
CBCWorldwide.com

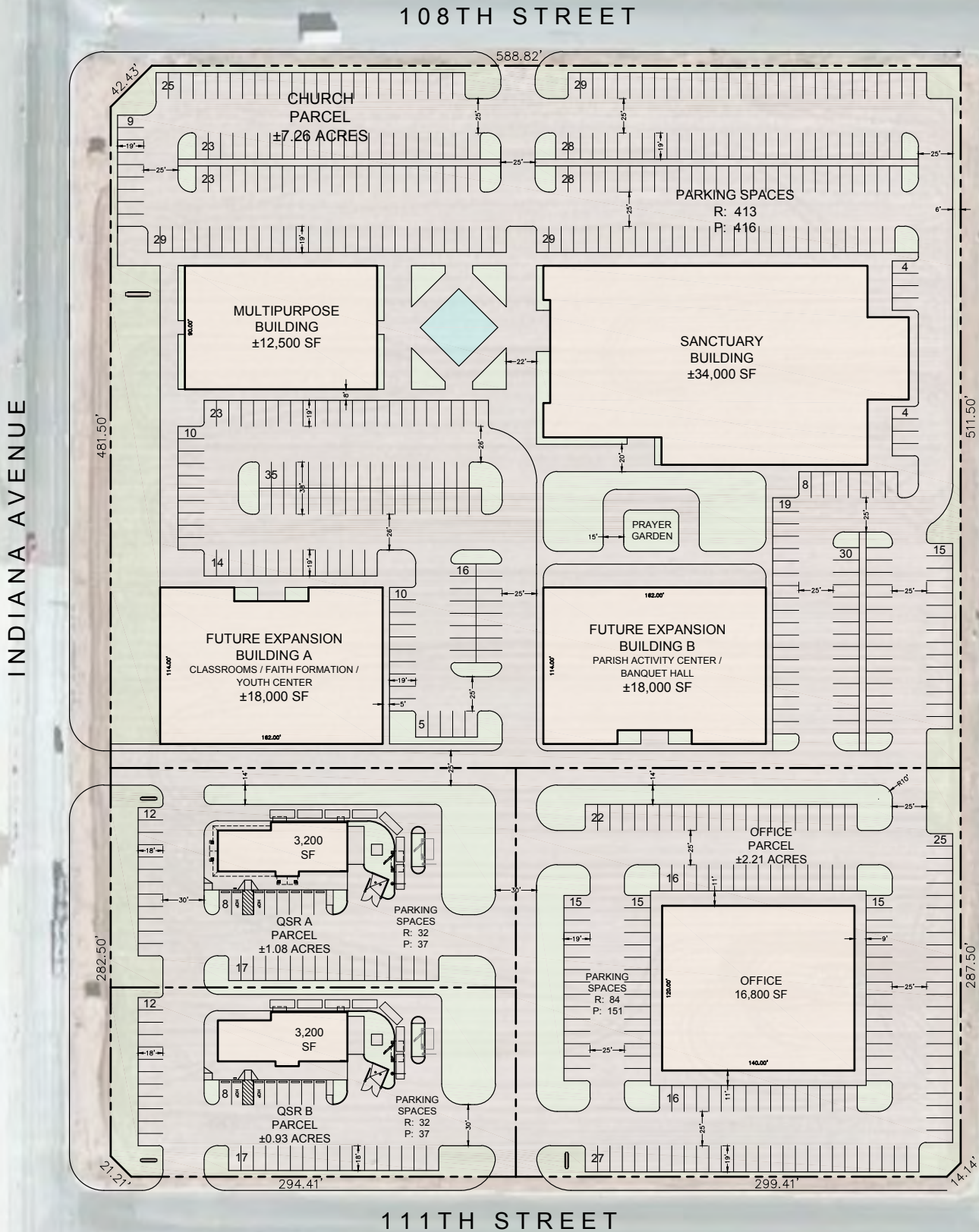
Coldwell Banker Commercial
CAPITAL ADVISORS

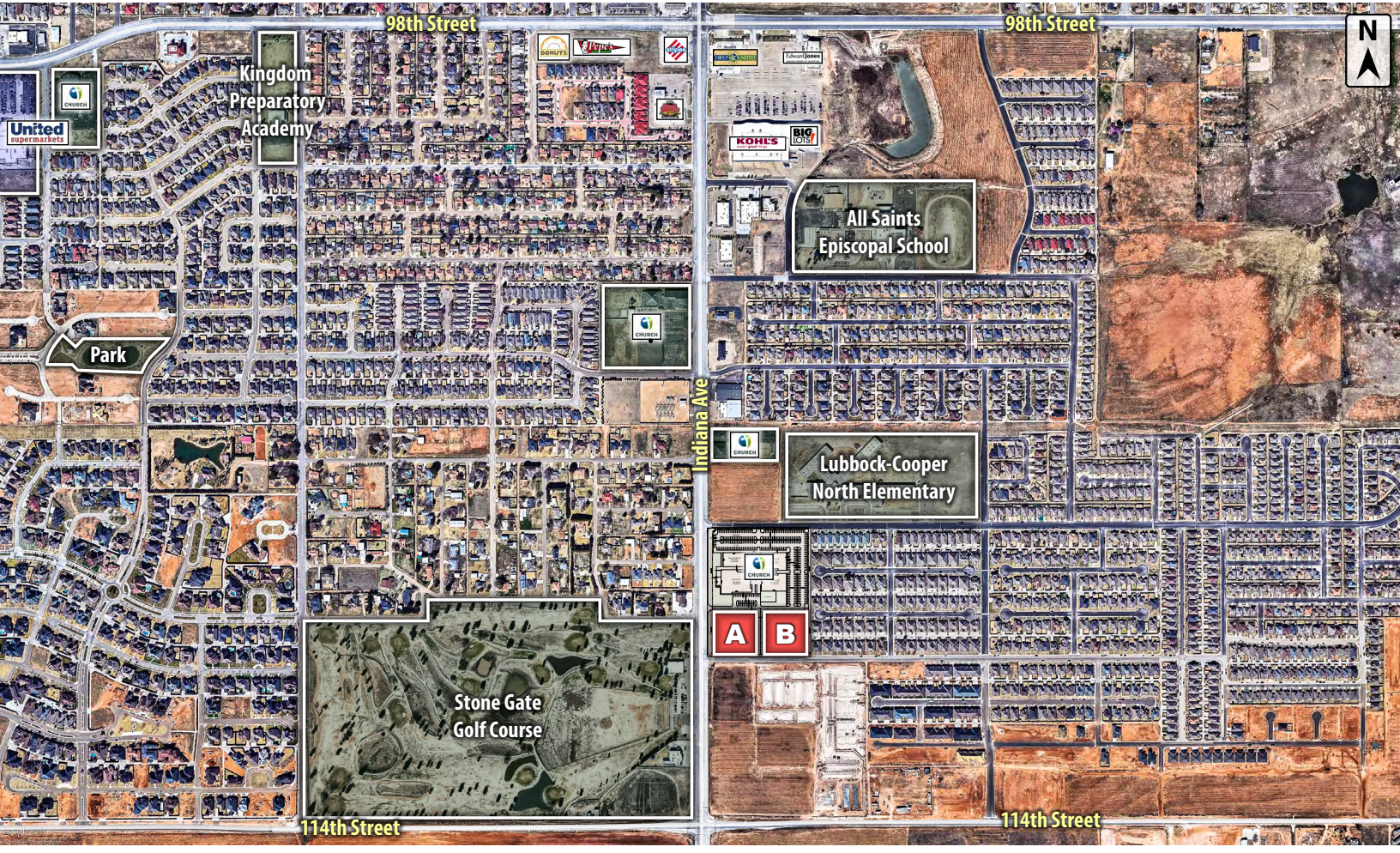
4924 S. Loop 289
Lubbock, TX 79414
806.793.0888

SITE PLAN



DEVELOPMENT SUGGESTION



LUBBOCK, TX
FAR AERIAL


DEMOGRAPHICS

POPULATION	1 MILES	3 MILES	5 MILES
TOTAL POPULATION	3,687	45,790	127,258
MEDIAN AGE	36.2	38.3	35.3
MEDIAN AGE (MALE)	33.2	37.1	33.9
MEDIAN AGE (FEMALE)	39.4	39.6	36.6
HOUSEHOLDS & INCOME	1 MILES	3 MILES	5 MILES
TOTAL HOUSEHOLDS	1,523	19,048	52,070
# OF PERSONS PER HH	2.4	2.4	2.4
AVERAGE HH INCOME	\$75,990	\$83,109	\$65,367
AVERAGE HOUSE VALUE	\$136,814	\$147,751	\$141,398

For Additional Information Contact:



Beau Tucker, CCIM
The Land Man
 806.784.3298 direct
 806.470.3944 cell
BTucker@CBCWorldwide.com