

1655 Beverly Blvd, 1st Floor

LOS ANGELES, CA 90026

FOR LEASE

Retail Property



UNITS AVAILABLE

NAME	SIZE	LEASE RATE
1655 Beverly Blvd	2,345 SF	\$2.50 SF/month



PROPERTY FEATURES

- 1st Floor Sublease of 2,345 SF Available.
- Newly renovated building
- 2 dedicated entrances - 1 street facing for easy public access
- Secured building - gated parking lot & security cameras
- 2 en-suite bathrooms



David Chen, CCIM, MBA, MRED
 MANAGING PRINCIPAL
 310.350.3810
 david.chen@sperrycga.com
 CalDRE #01923629

Gregory Kho
 SENIOR ASSOCIATE
 213.400.0654
 gregory.kho@sperrycga.com
 CalDRE #02033257

Each office independently owned and operated.

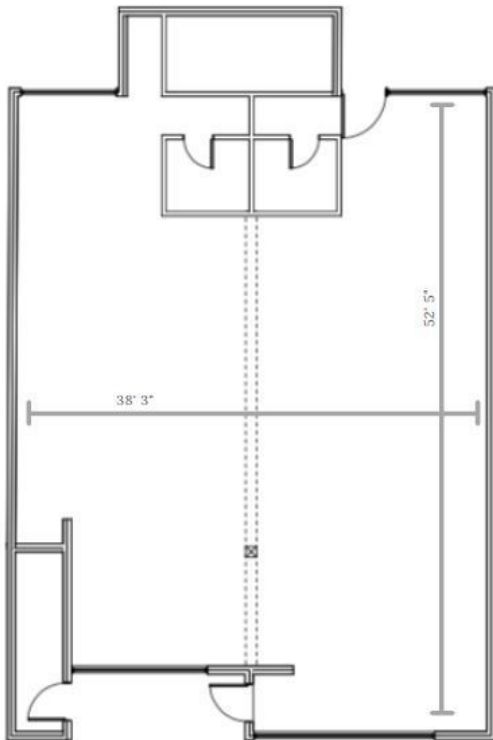
We obtained the information above from sources we believe to be reliable. However, we have not verified its accuracy and make no guarantee, warranty or representation about it. It is submitted subject to the possibility of errors, omissions, change of price, rental or other conditions, prior sale, lease or financing, or withdrawal without notice. We include projections, opinions, assumptions or estimates for example only, and they may not represent current or future performance of the property. You and your tax and legal advisors should conduct your own investigation of the property and transaction.

1655 Beverly Blvd, 1st Floor

LOS ANGELES, CA 90026

FOR LEASE

Retail Property




SPERRY
COMMERCIAL
GLOBAL AFFILIATES™
ATLAS COMMERCIAL
REAL ESTATE
www.SperryCGA.com

David Chen, CCIM, MBA, MRED
MANAGING PRINCIPAL
310.350.3810
david.chen@sperrycga.com
CalDRE #01923629

Gregory Kho
SENIOR ASSOCIATE
213.400.0654
gregory.kho@sperrycga.com
CalDRE #02033257

Each office independently owned and operated.

We obtained the information above from sources we believe to be reliable. However, we have not verified its accuracy and make no guarantee, warranty or representation about it. It is submitted subject to the possibility of errors, omissions, change of price, rental or other conditions, prior sale, lease or financing, or withdrawal without notice. We include projections, opinions, assumptions or estimates for example only, and they may not represent current or future performance of the property. You and your tax and legal advisors should conduct your own investigation of the property and transaction.