

2nd Floor: Starting at \$12.95/SF Full Service
Main Floor: Starting at \$14.50/SF Full Service

Property Highlights

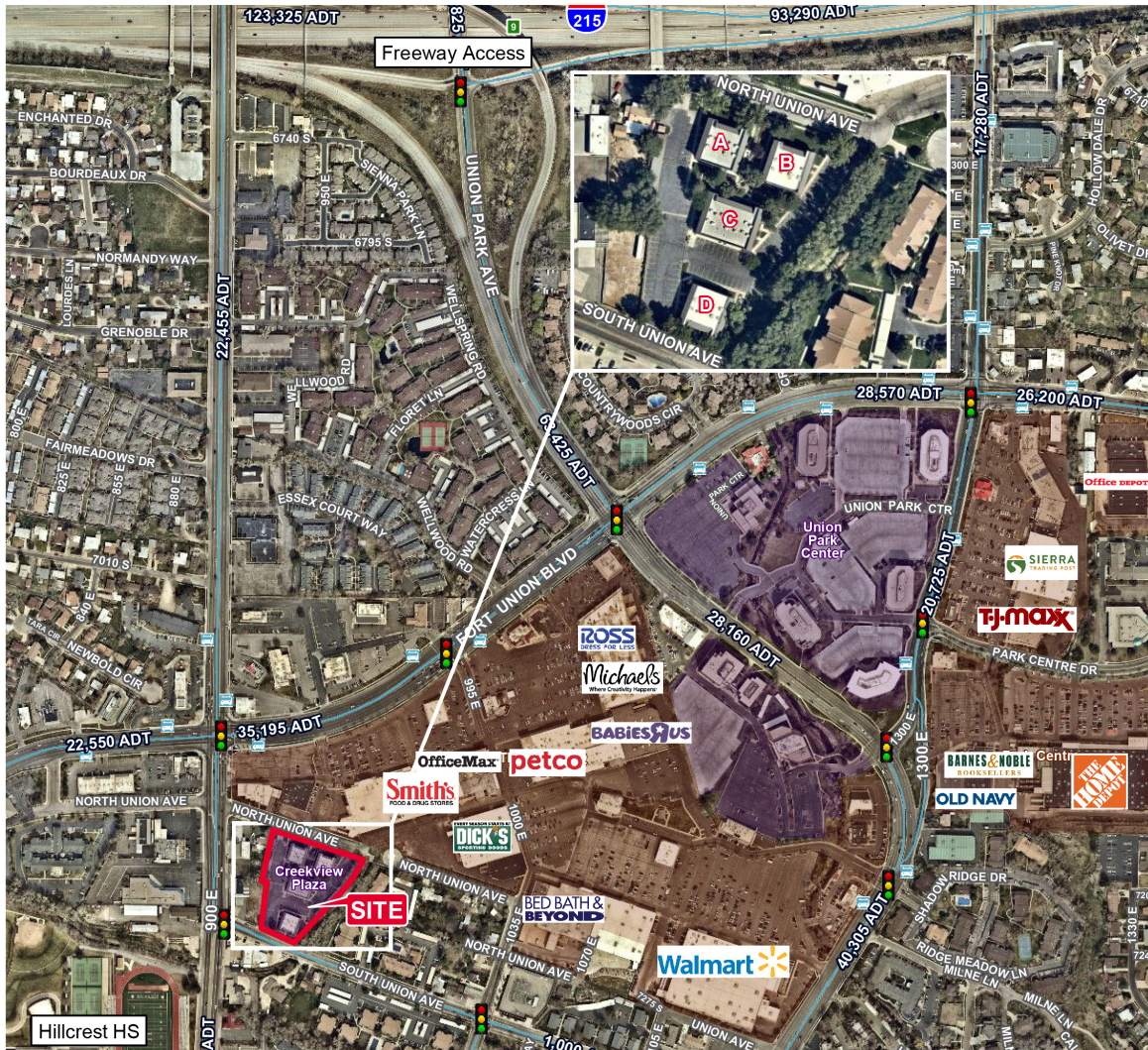
- Great Value in the Fort Union Submarket!
- T.I.'s Available
- Great Fort Union Location - Restaurants, Shops with Many Nearby Amenities
- Utopia and Comcast Fiber
- Front Door Parking (4/1000)
- Tranquil Campus Environment
- First Floor Common Area Conference Room Available
- Many Property & Landscape Upgrades Including Video Surveillance
- Professionally Leased and Managed
- Easy I-215 Freeway Access
- Covered Parking Available

Mark Cannell

Associate - Office / Investment
+1 801 303 5487
mark.cannell@cushwake.com

170 South Main, Suite 1600
Salt Lake City, UT 84101
Main +1 801 322 2000
Fax +1 801 322 2040
cushmanwakefield.com

Aerial



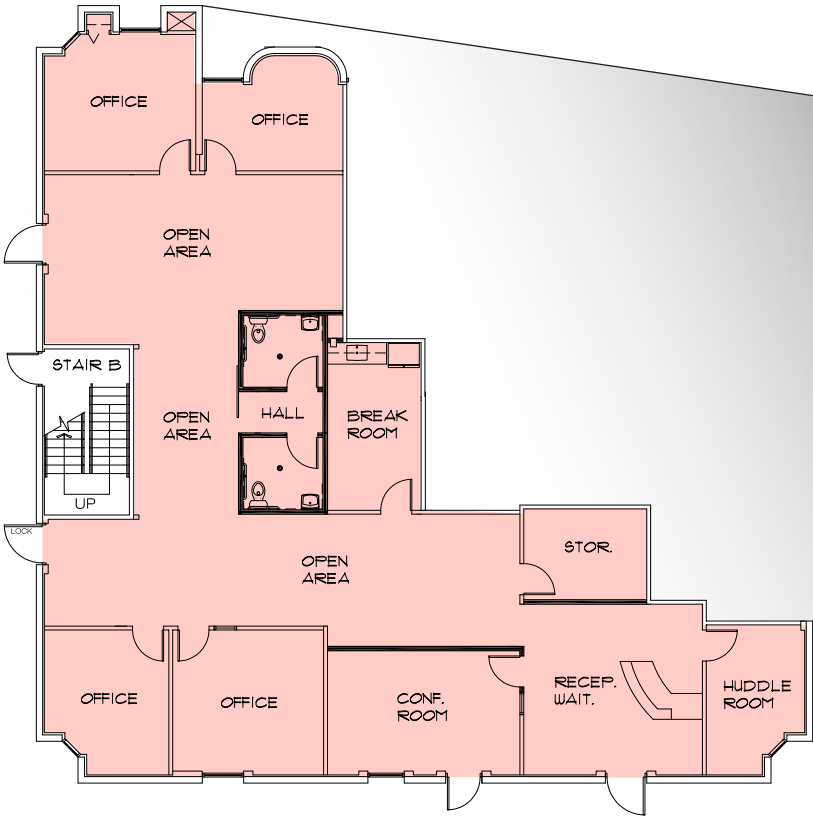
Interior Finishes



Mark Cannell
Associate - Office / Investment
+1 801 303 5487
mark.cannell@cushwake.com

170 South Main, Suite 1600
Salt Lake City, UT 84101
Main +1 801 322 2000
Fax +1 801 322 2040
cushmanwakefield.com

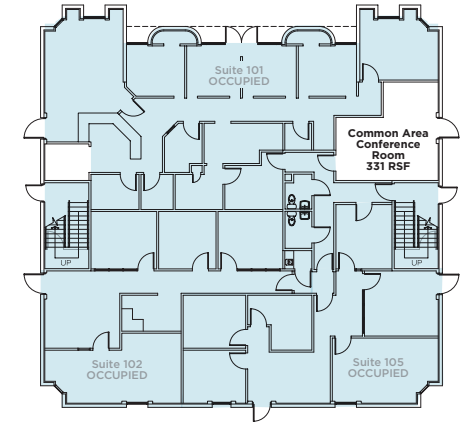
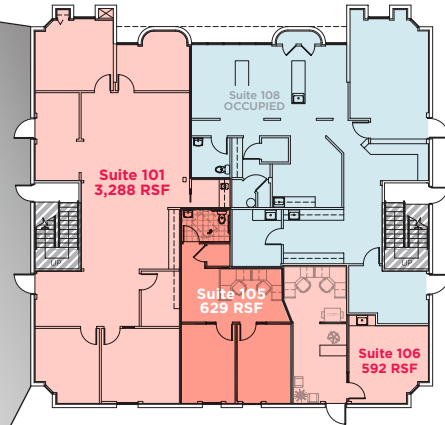
Conceptual Drawing Suite 101



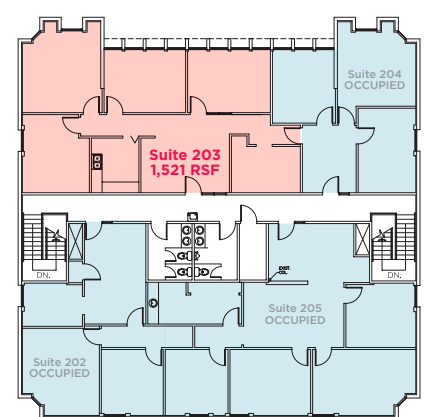
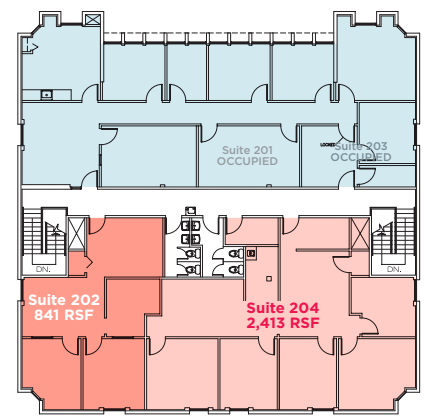
Available Space: Building A & B

Available (light red) Occupied (light blue)

14,600 SF - Building A - First Floor **10,650 SF - Building B - First Floor**



Up to 4,727 SF Building A - Second Floor **1,521 SF Building B - Second Floor**



Building A



Building B



Available Space: Building C & D

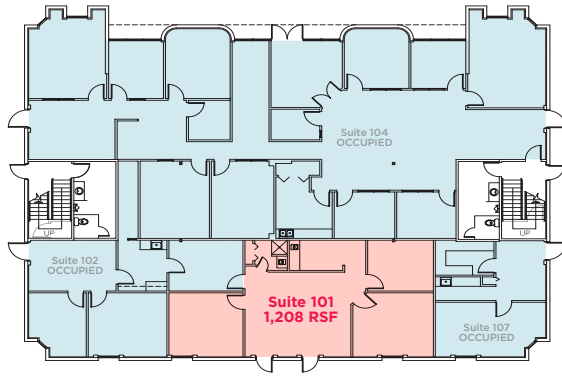
Building C



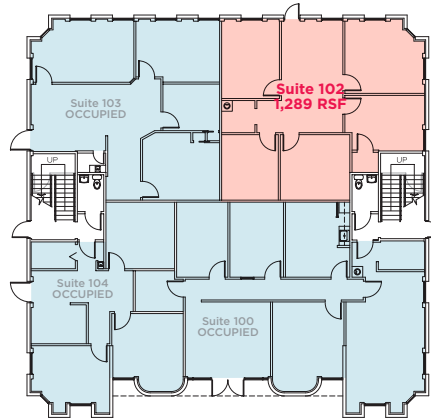
Building D



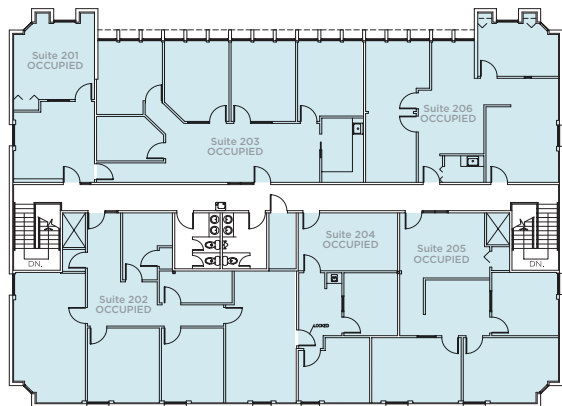
14,600 SF - Building C - First Floor



11,250 SF - Building D - First Floor



Building C - Second Floor



2,283 SF Building D - Second Floor

