

# 21660 E. COPLEY DRIVE

Diamond Bar, California

## LEASE OPPORTUNITY

SUITE	RSF	AVAILABILITY
170	1,901	Now
220	1,447	4/1/18



# 21700 E. COPLEY DRIVE

Diamond Bar, California

SUITE	RSF	AVAILABILITY
110	1,610	Now
170	1,190	3/1/18
180	2,583	Now
200/238/290	19,655	7/1/18
320	7,022	3/1/18
360	3,796	Now
380	2,182	Now
388	1,792	Now

Suites 170 & 180 are contiguous to 3,773 sf  
 Suites 360, 380 & 388 are contiguous to 7,770 sf



**Muller**  
company

For leasing information,  
please contact:

SEAN KERN | 909.942.4691  
Senior Director  
sean.kern@cushwake.com  
Lic. # 01377294

RYAN RUSSELL | 909.942.4697  
Director  
ryan.russell@cushwake.com  
Lic. #01505274





# 21660 & 21700 E. COPLEY DRIVE

Diamond Bar, California



## FEATURES & AMENITIES:

- Lease Rate: \$2.55 FSG
- Parking 4:1000
- 3-story building located in a master-planned, 255-acre business park designed for corporate headquarters
- Dramatic Presence
- Lush Landscaping
- Centrally Located – Gateway to four counties
- Located Minutes from the 10, 57, 71 & 60 Freeways
- Close to Ontario International Airport, hotels, restaurants, business services and retail





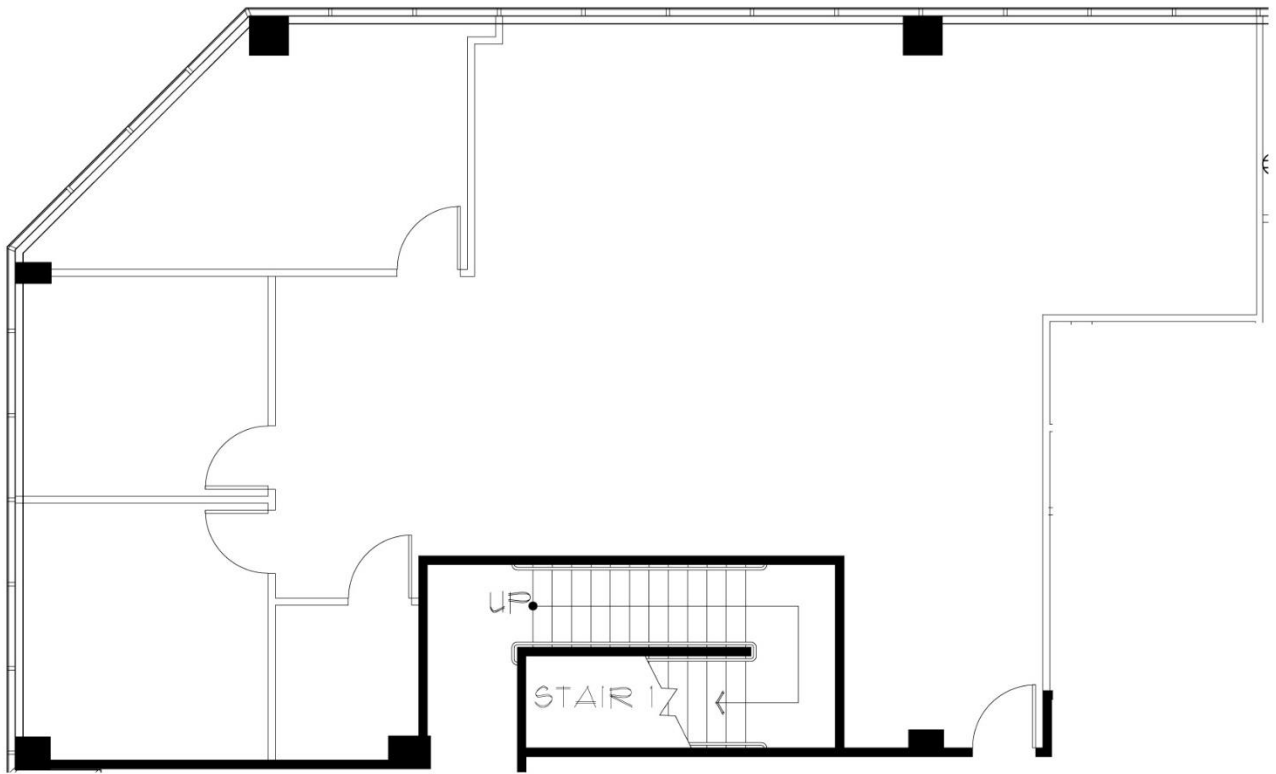


**21660 E. COPLEY DRIVE**  
Diamond Bar, California

SUITE 170

1,901

**GATEWAY CORPORATE CENTER**



For leasing information,  
please contact:

**SEAN KERN** | 909.942.4691  
Senior Director  
sean.kern@cushwake.com  
Lic. # 01377294

**RYAN RUSSELL** | 909.942.4697  
Director  
ryan.russell@cushwake.com  
Lic. #01505274





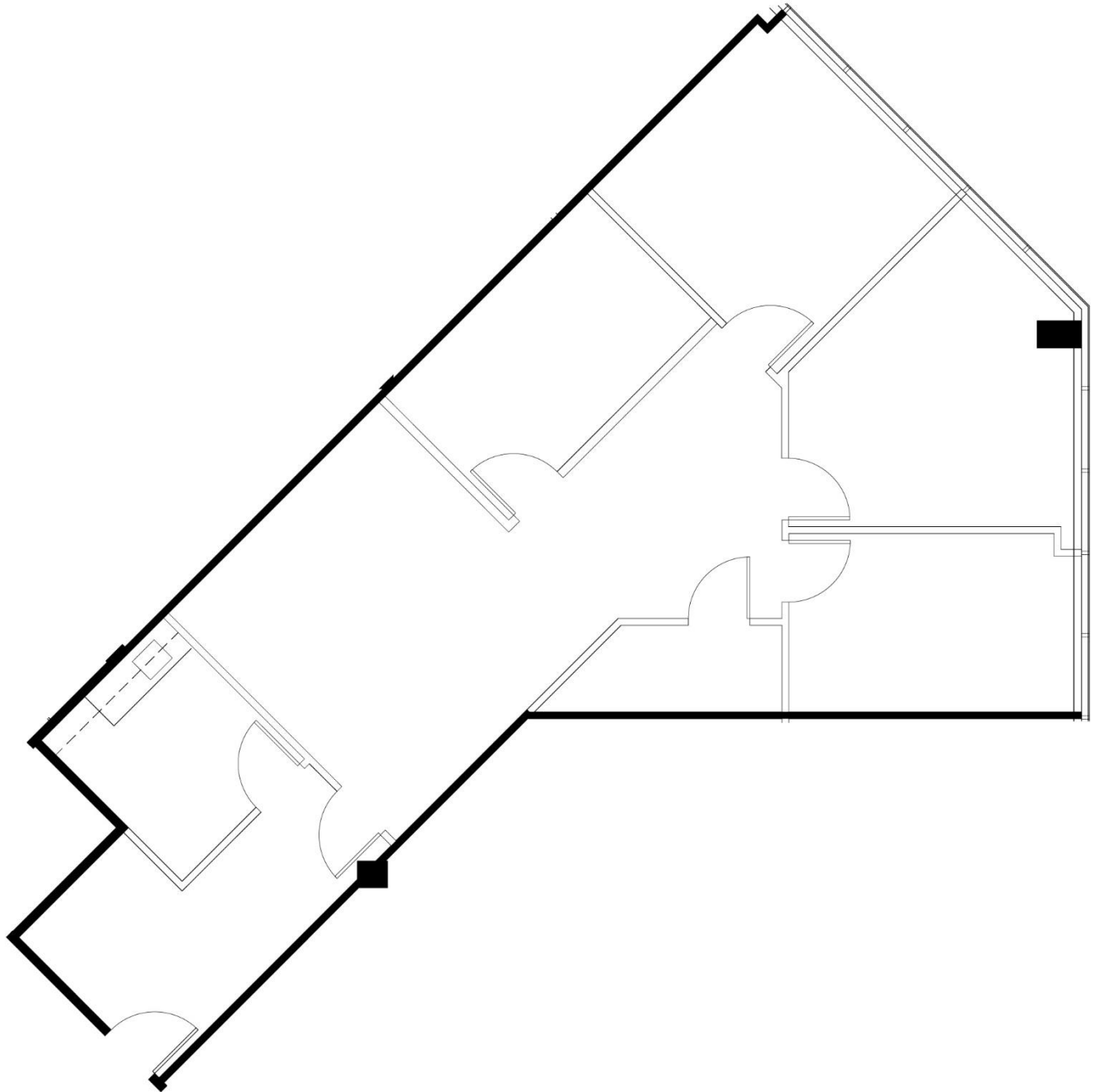
# 21660 E. COPLEY DRIVE

Diamond Bar, California

SUITE 220

1,447

GATEWAY CORPORATE CENTER



For leasing information,  
please contact:

**SEAN KERN** | 909.942.4691  
Senior Director  
sean.kern@cushwake.com  
Lic. # 01377294

**RYAN RUSSELL** | 909.942.4697  
Director  
ryan.russell@cushwake.com  
Lic. #01505274





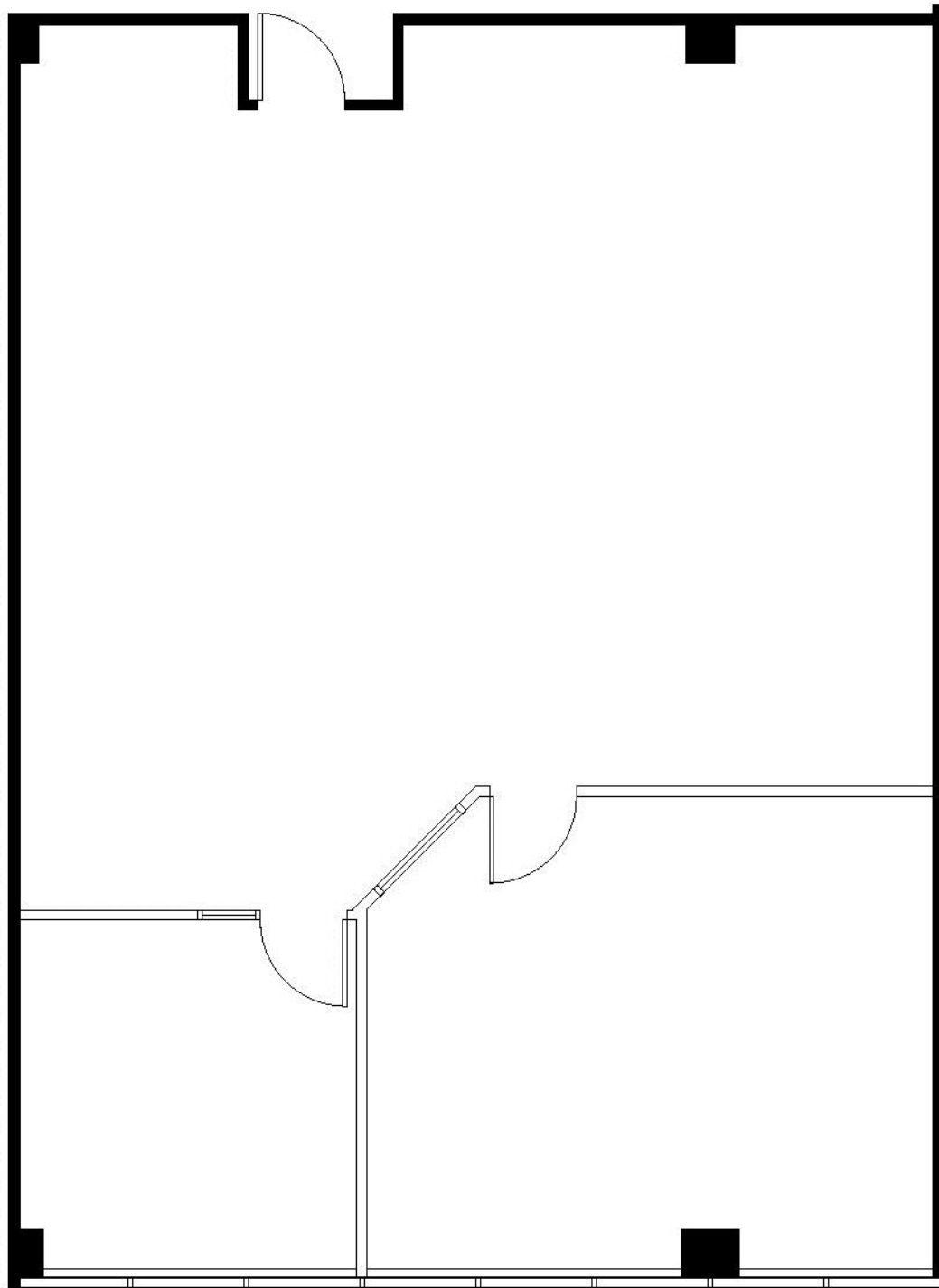
# 21700 E. COPLEY DRIVE

Diamond Bar, California

SUITE 110

1,610 RSF

GATEWAY CORPORATE CENTER



For leasing information,  
please contact:

**SEAN KERN** | 909.942.4691  
Senior Director  
sean.kern@cushwake.com  
Lic. # 01377294

**RYAN RUSSELL** | 909.942.4697  
Director  
ryan.russell@cushwake.com  
Lic. #01505274





# 21700 E. COPLEY DRIVE

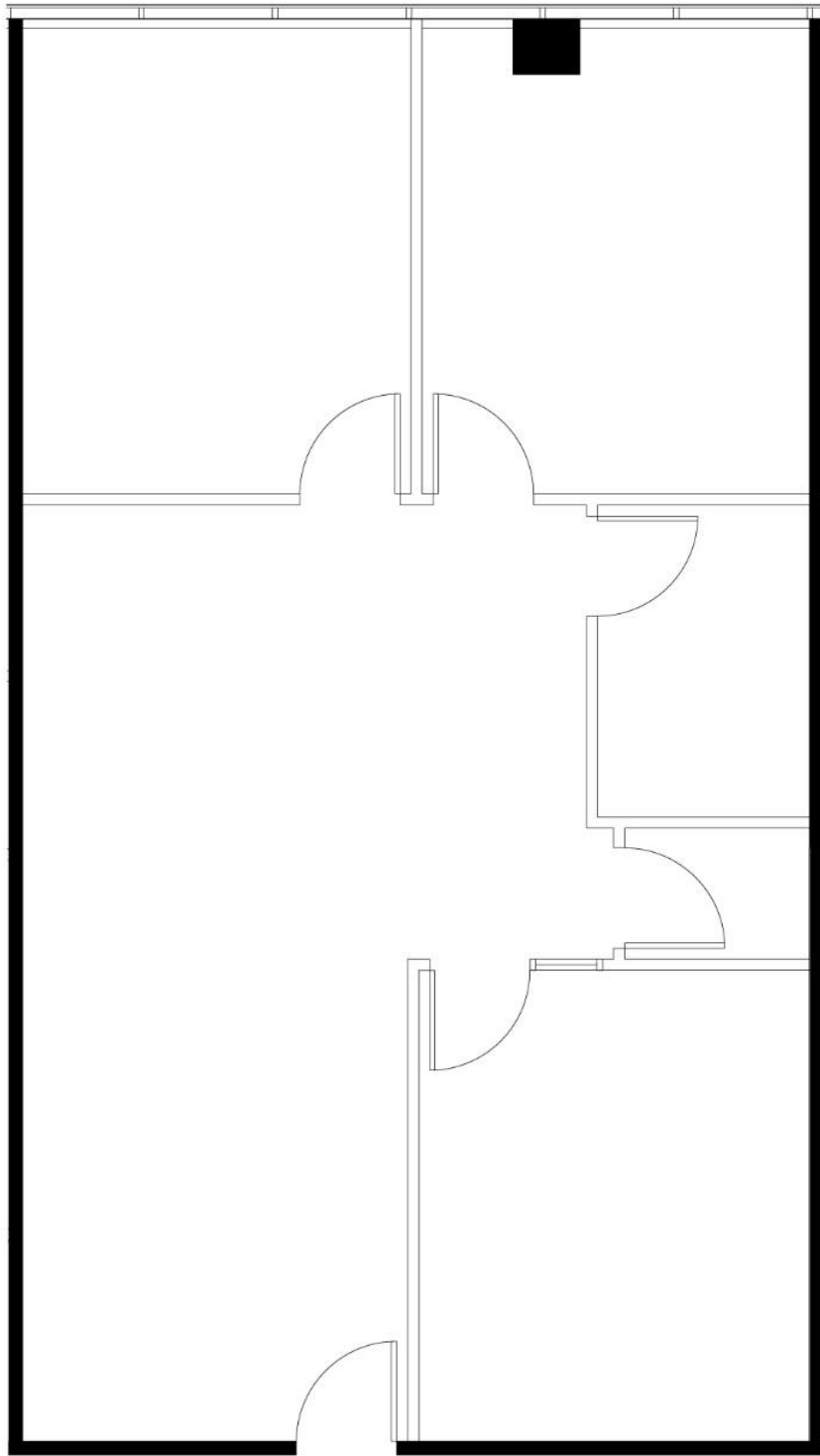
Diamond Bar, California

SUITE 170

1,190 RSF

AVAILABLE 3/1/18

GATEWAY CORPORATE CENTER



For leasing information,  
please contact:

SEAN KERN | 909.942.4691  
Senior Director  
sean.kern@cushwake.com  
Lic. # 01377294

RYAN RUSSELL | 909.942.4697  
Director  
ryan.russell@cushwake.com  
Lic. #01505274





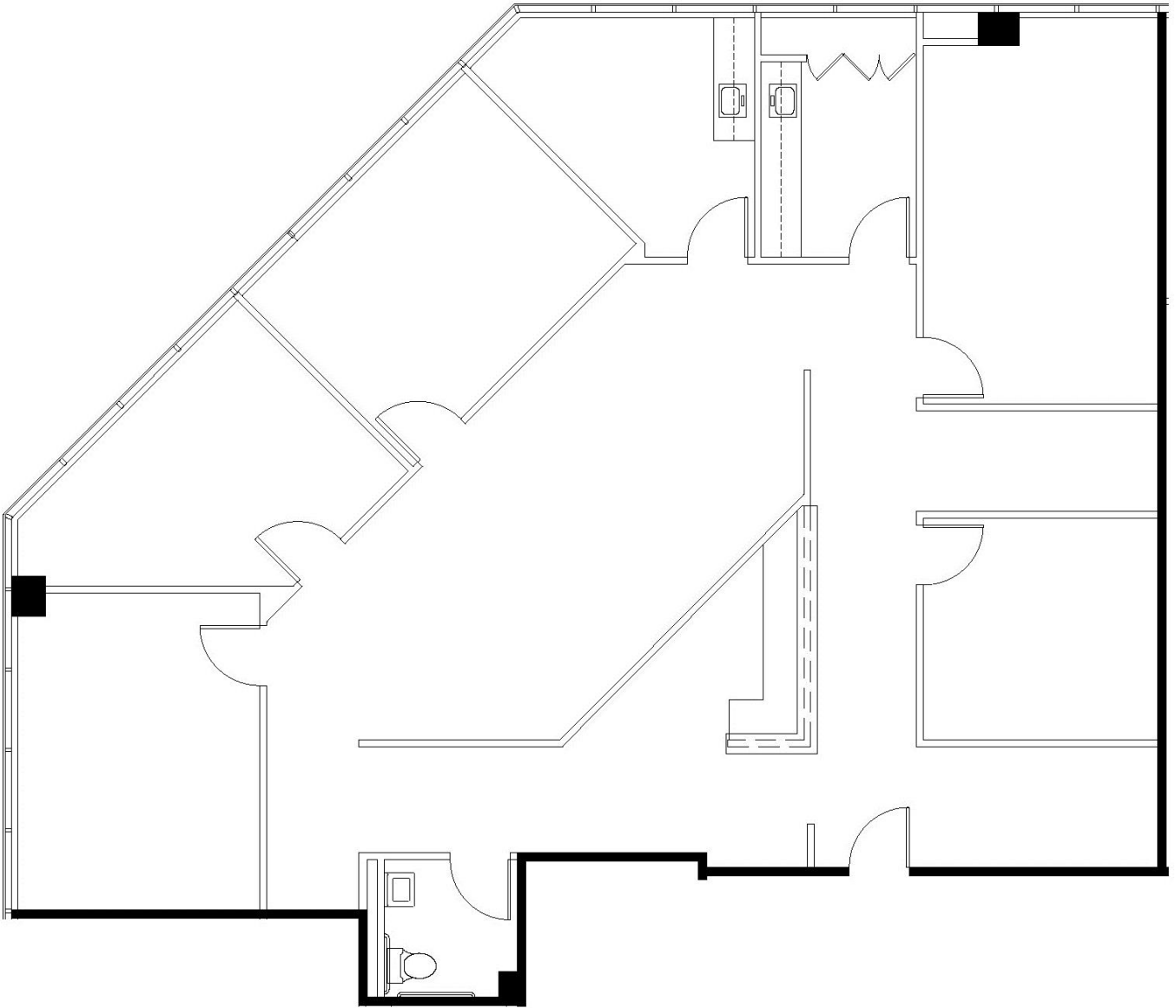
# 21700 E. COPLEY DRIVE

Diamond Bar, California

SUITE 180

2,583 RSF

GATEWAY CORPORATE CENTER



For leasing information,  
please contact:

**SEAN KERN** | 909.942.4691  
Senior Director  
sean.kern@cushwake.com  
Lic. # 01377294

**RYAN RUSSELL** | 909.942.4697  
Director  
ryan.russell@cushwake.com  
Lic. #01505274



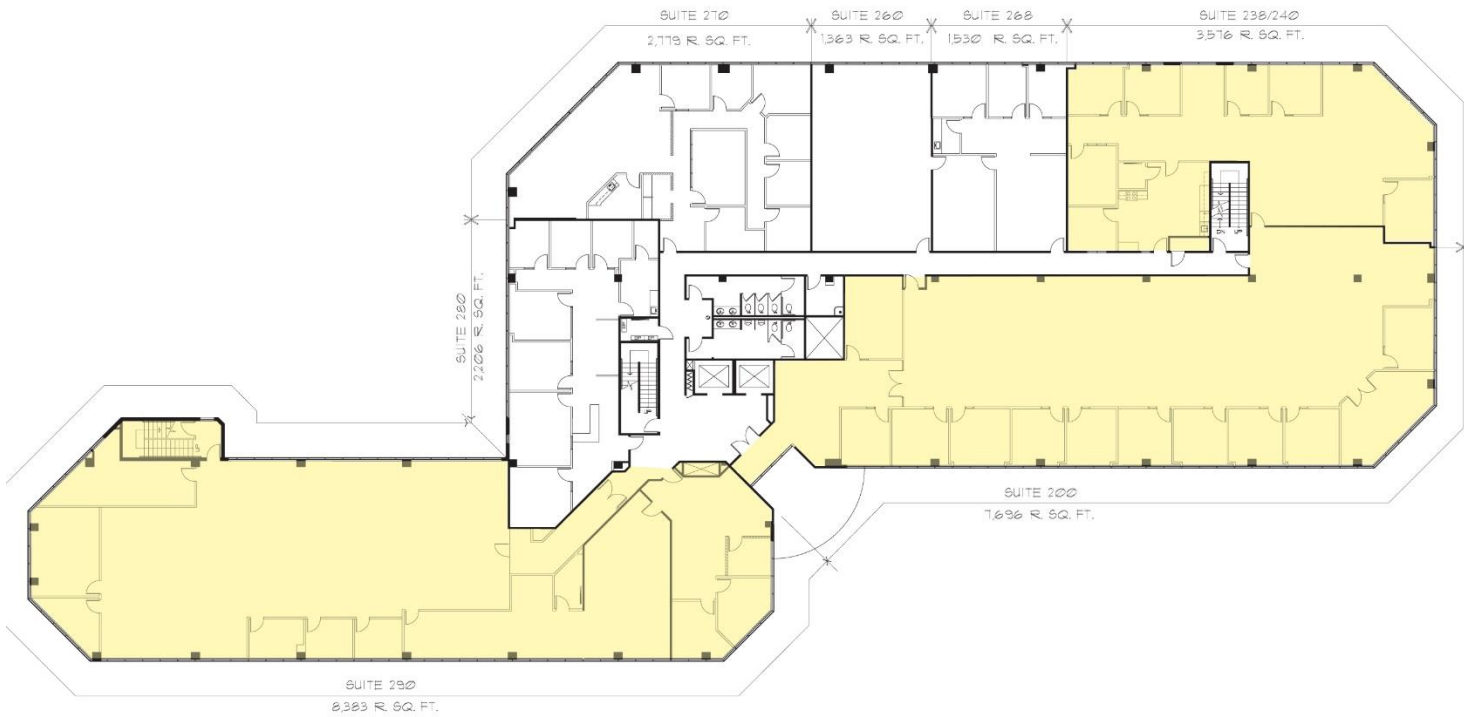


# 21700 E. COPLEY DRIVE

Diamond Bar, California

SUITES 200, 238 & 290 – CONTIGUOUS TO 19,655 SF

AVAILABLE 7/1/18



For leasing information,  
please contact:

**SEAN KERN** | 909.942.4691  
Senior Director  
sean.kern@cushwake.com  
Lic. # 01377294

**RYAN RUSSELL** | 909.942.4697  
Director  
ryan.russell@cushwake.com  
Lic. #01505274







# 21700 E. COPLEY DRIVE

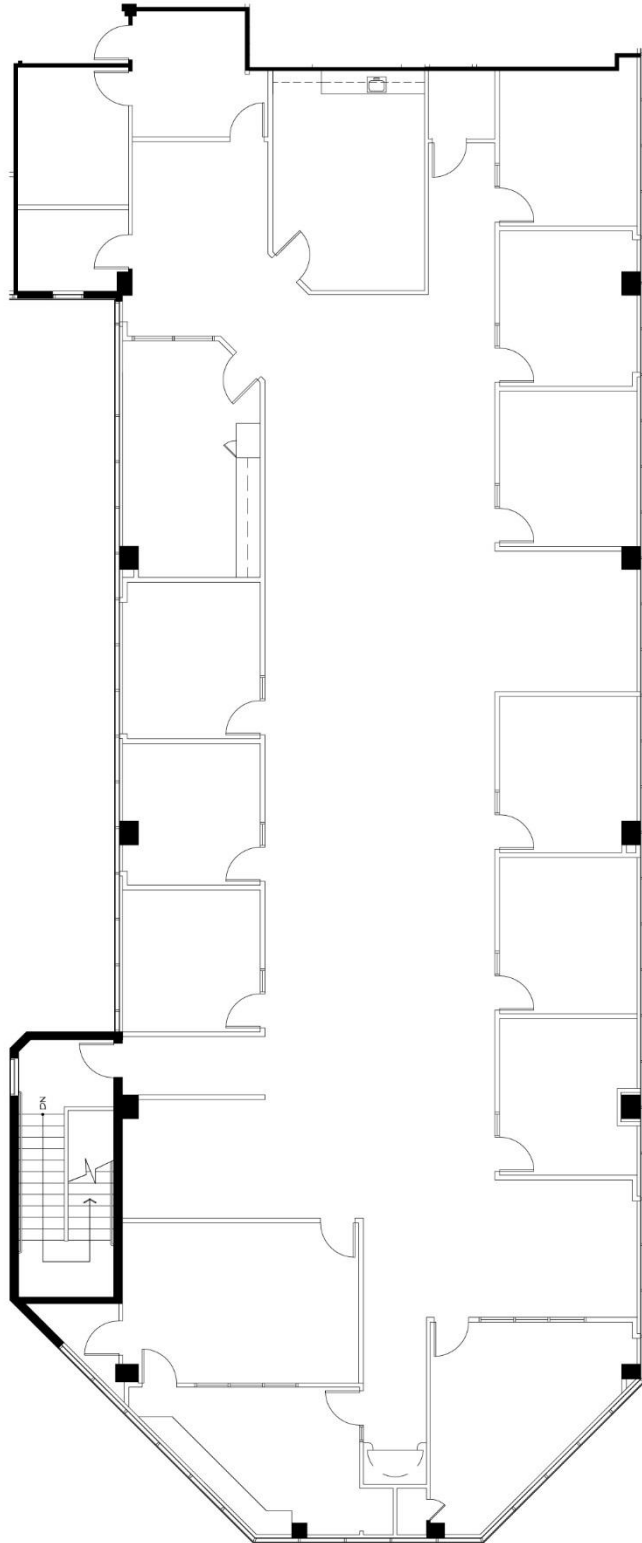
Diamond Bar, California

SUITE 320

7,022 RSF

AVAILABLE 3/1/18

GATEWAY CORPORATE CENTER



For leasing information,  
please contact:

**SEAN KERN** | 909.942.4691  
Senior Director  
sean.kern@cushwake.com  
Lic. # 01377294

**RYAN RUSSELL** | 909.942.4697  
Director  
ryan.russell@cushwake.com  
Lic. #01505274



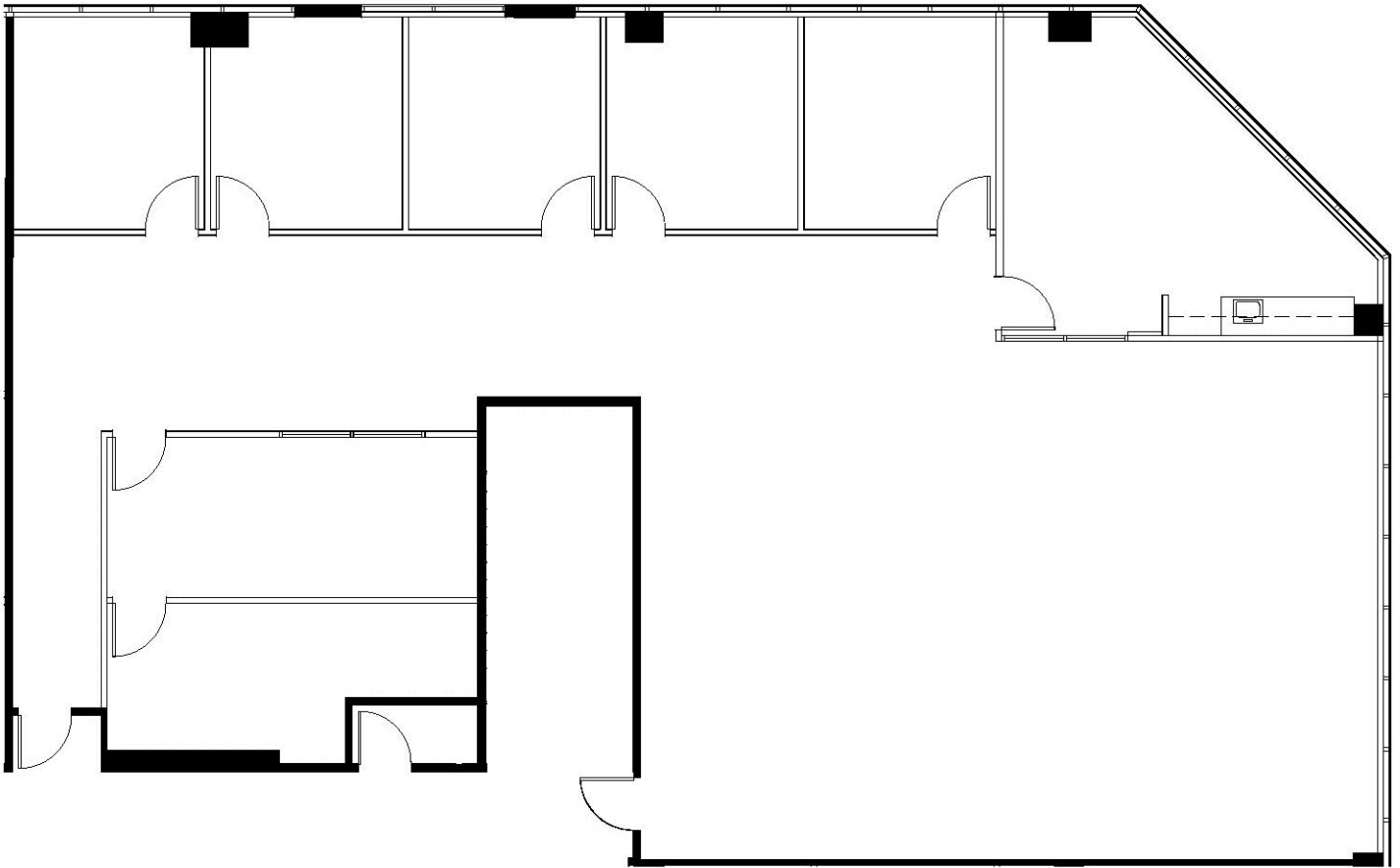


**21700 E. COPLEY DRIVE**  
Diamond Bar, California

SUITE 360

3,796 RSF

**GATEWAY CORPORATE CENTER**



For leasing information,  
please contact:

**SEAN KERN** | 909.942.4691  
Senior Director  
sean.kern@cushwake.com  
Lic. # 01377294

**RYAN RUSSELL** | 909.942.4697  
Director  
ryan.russell@cushwake.com  
Lic. #01505274





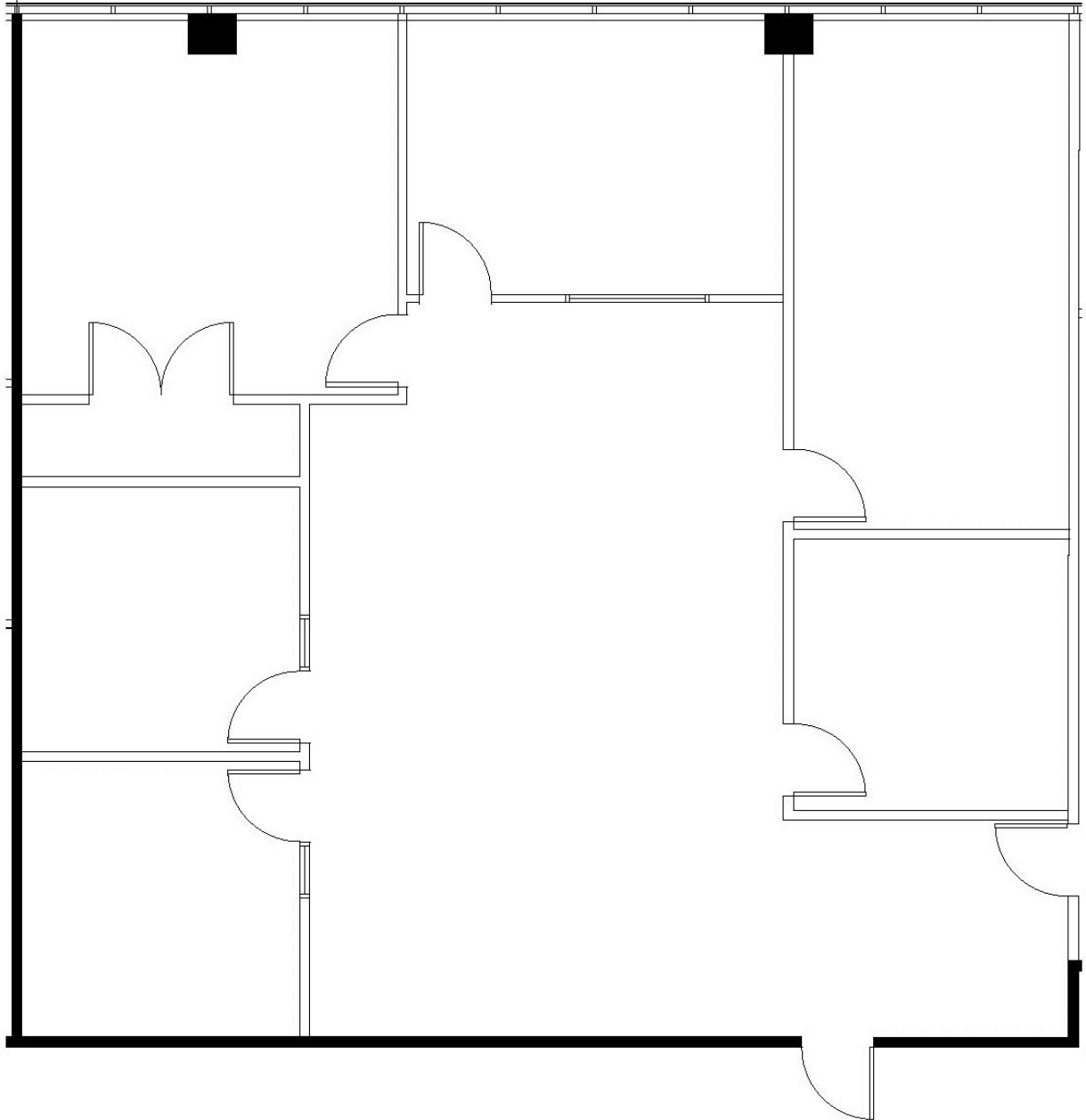
# 21700 E. COPLEY DRIVE

Diamond Bar, California

SUITE 380

2,182 RSF

GATEWAY CORPORATE CENTER



For leasing information,  
please contact:

**SEAN KERN** | 909.942.4691  
Senior Director  
sean.kern@cushwake.com  
Lic. # 01377294

**RYAN RUSSELL** | 909.942.4697  
Director  
ryan.russell@cushwake.com  
Lic. #01505274







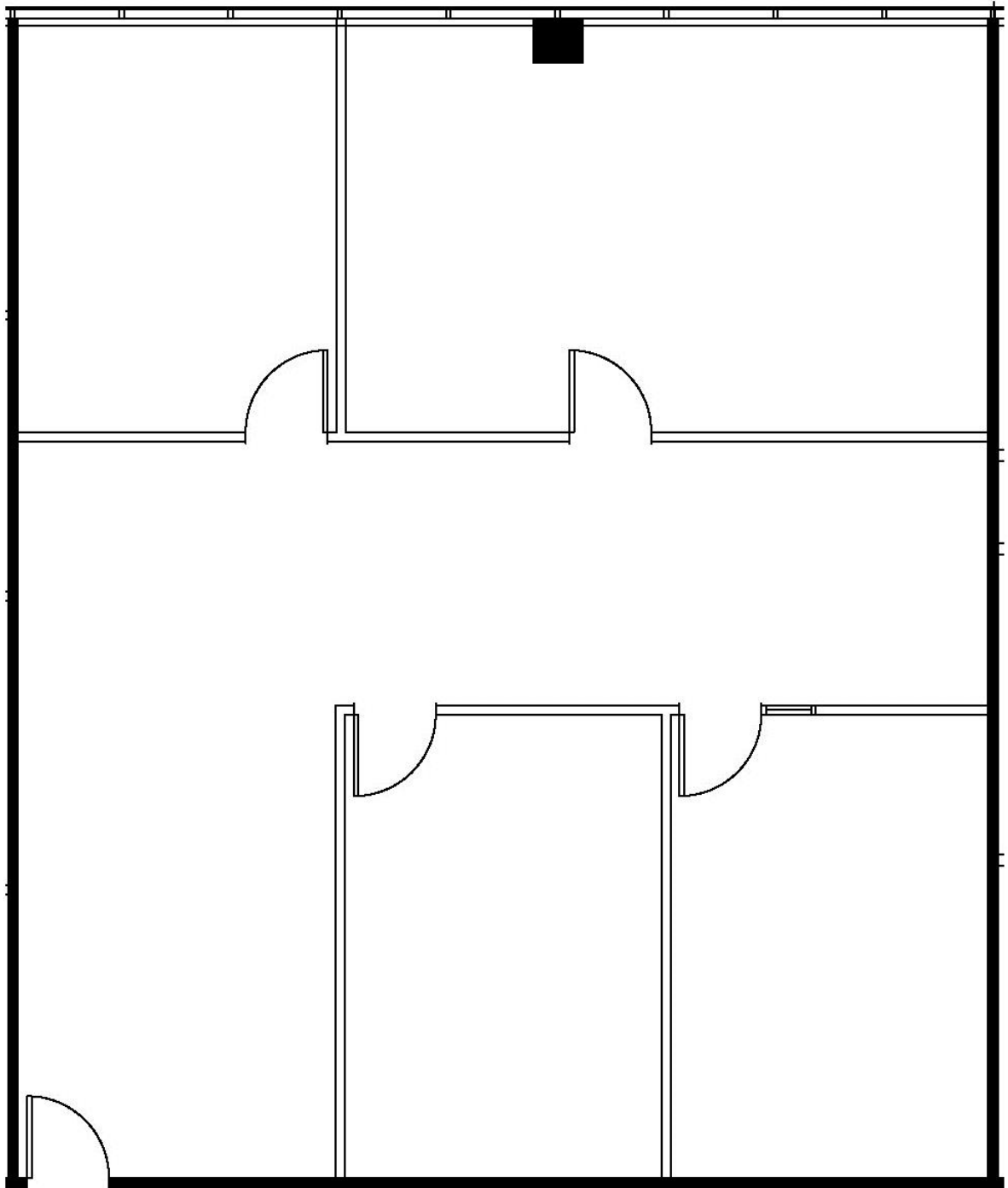
# 21700 E. COPLEY DRIVE

Diamond Bar, California

SUITE 388

1,792 RSF

GATEWAY CORPORATE CENTER



For leasing information,  
please contact:

SEAN KERN | 909.942.4691  
Senior Director  
sean.kern@cushwake.com  
Lic. # 01377294

RYAN RUSSELL | 909.942.4697  
Director  
ryan.russell@cushwake.com  
Lic. #01505274

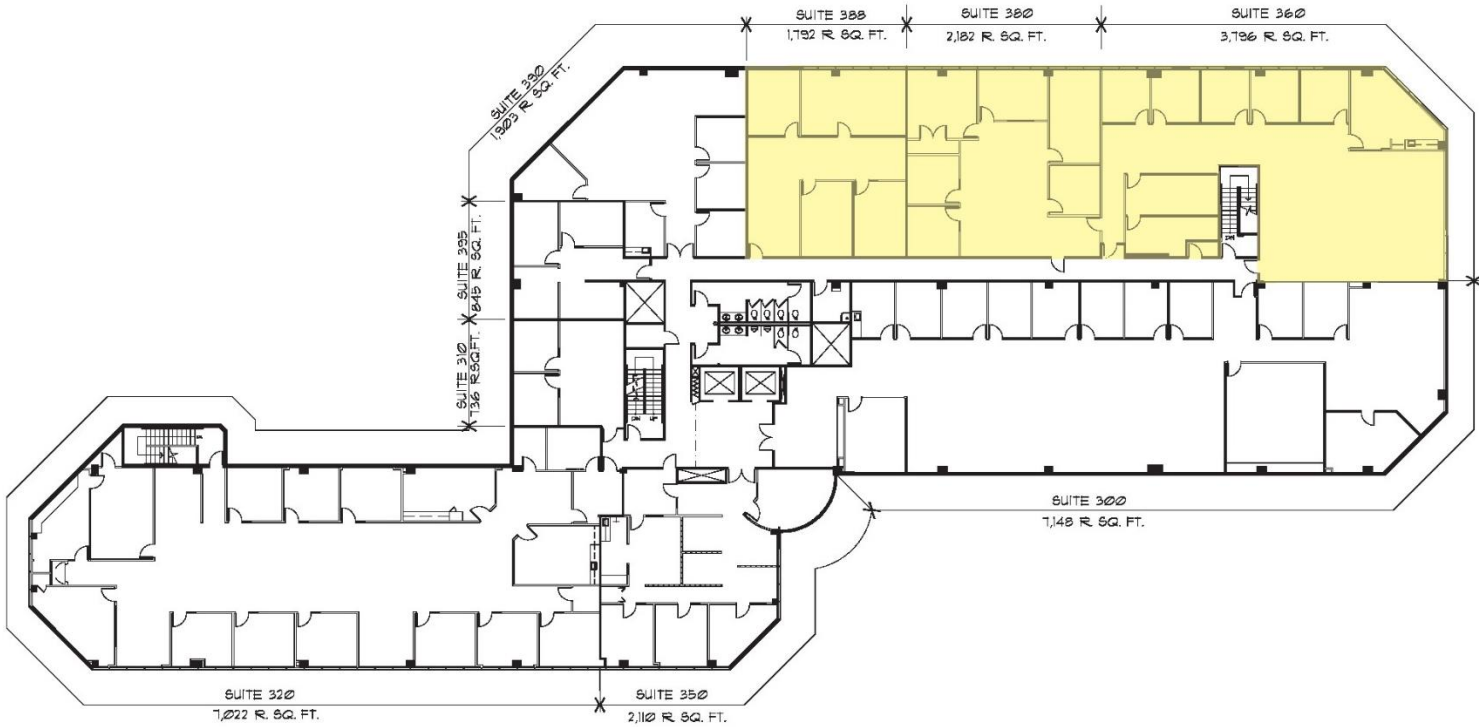




# 21700 E. COPLEY DRIVE

Diamond Bar, California

SUITES 360, 380 & 388 - CONTIGUOUS TO 7,770 SF



For leasing information,  
please contact:

SEAN KERN | 909.942.4691  
Senior Director  
sean.kern@cushwake.com  
Lic. # 01377294

RYAN RUSSELL | 909.942.4697  
Director  
ryan.russell@cushwake.com  
Lic. #01505274

