

610 South Mill Pond Rd, Lehi, UT 84043

OFFICE  
FOR LEASE

# Yates Office Plaza

610 South Mill Pond Road  
Lehi, UT 84043

OFFICE  
FOR LEASE



## PROPERTY INFORMATION

- > 2,500 - 5,000 SF, main level
- > \$16.50 PSF NNN
- > 3 parking spaces per 1,000 SF
- > Approx .5 mile from I-15 exit 279 Main St and Front Runner train station
- > 9'-6" ceilings / 7' doors / Custom Millwork Kitchenette / Shared conference room
- > 2 Large shared bathrooms
- > Exterior patio / courtyard
- > 7' High Windows with solar control blinds
- > Rental of 1,000 SF rotunda conference room available (second level)



# NAIPremier

7455 Union Park Avenue Ste. A, Midvale, Utah 84047

801 255 3333 | [naipremier.com](http://naipremier.com)

NO WARRANTY OR REPRESENTATION, EXPRESS OR IMPLIED, IS MADE AS TO THE ACCURACY OF THE INFORMATION CONTAINED HEREIN, AND THE SAME IS SUBMITTED SUBJECT TO ERRORS, OMISSIONS, CHANGE OF PRICE, RENTAL OR OTHER CONDITIONS, PRIOR SALE, LEASE OR FINANCING, OR WITHDRAWAL WITHOUT NOTICE, AND OF ANY SPECIAL LISTING CONDITIONS IMPOSED BY OUR PRINCIPALS NO WARRANTIES OR REPRESENTATIONS ARE MADE AS TO THE CONDITION OF THE PROPERTY OR ANY HAZARDS CONTAINED THEREIN ARE ANY TO BE IMPLIED.

# NAIPremier

COMMERCIAL REAL ESTATE SERVICES, WORLDWIDE

7455 Union Park Avenue Ste. A,  
Midvale, Utah 84047

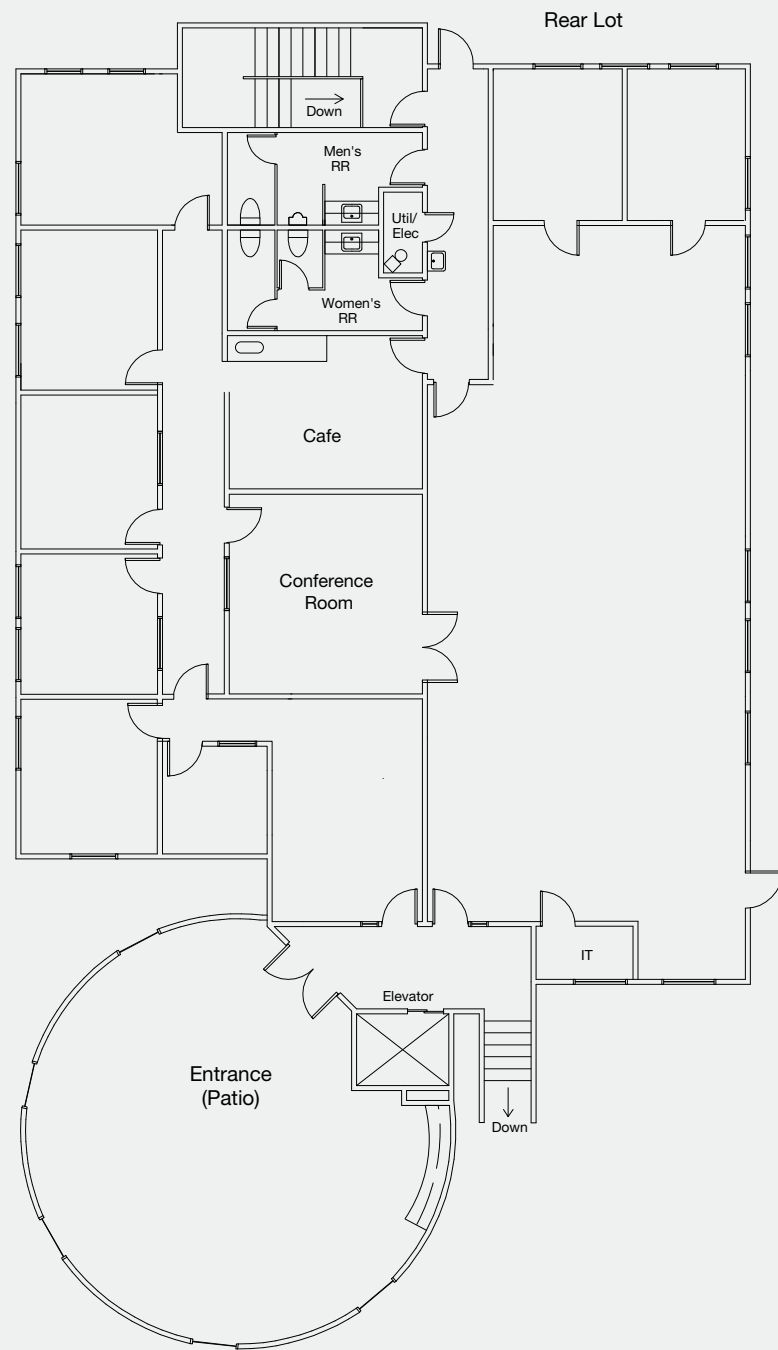
801 255 3333 | [naipremier.com](http://naipremier.com)

Christopher Wilson, CCA

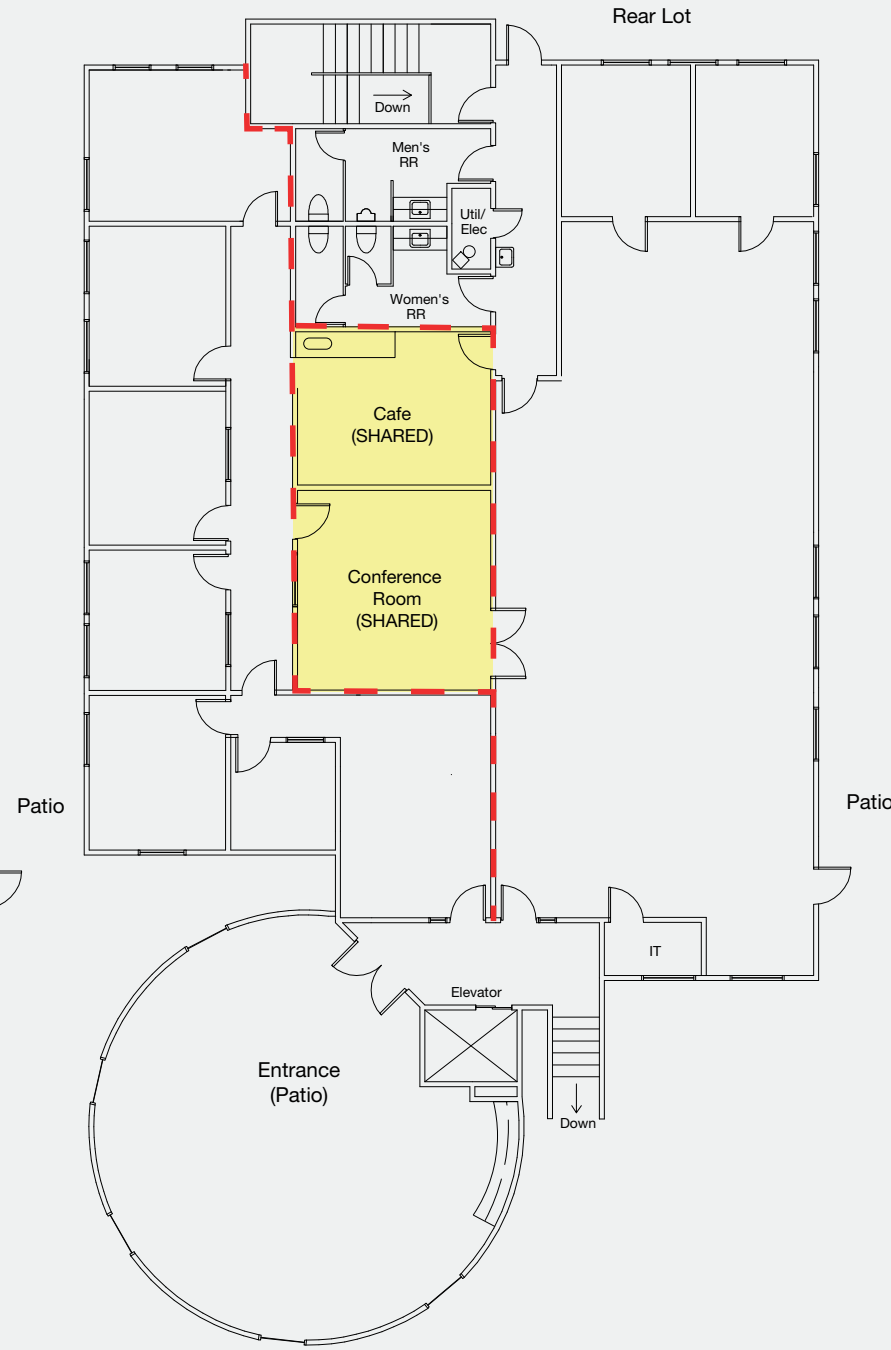
c 801 783 6269

[cwilson@naipremier.com](mailto:cwilson@naipremier.com)

FLOOR PLAN  
5,000 SF - Main Level



(2) 2,500 SF - Main Level



Shared 1,000 SF Rotunda Conference Room (Rental)- Second Level

