

Results Driven Retail Solutions<sup>SM</sup>

**Barnard Commercial**  
Real Estate

# Village at Main Street

8309-8699 SW Main Street, Wilsonville, OR 97070

View Online:



The Village at Main is a planned community development with plaza style commercial buildings conveniently located adjacent to 464 apartment homes and a state of the art gym facility. The property sits right along the South West side of Wilsonville Road with the most visibility and presence of any commercial property in Wilsonville . It was designed to be a safe and easily walked destination for the dense residential that surrounds it while also being conveniently located for the remaining Wilsonville residents to access via car or public transit. The Tenant mix is diverse with neighbors including Red Robin, Wanker's Saloon, Jimmy John's, AT&T Wireless, Mattress Firm, Wells Fargo Bank, Gentle Dental, Benchmark Physical Therapy and many others.



## Available:

### Building 2

Suite 200—1,782 SF  
Suite 230—2,497 SF  
(Former Dental)  
\$23.00 PSF/Year, NNN

### Building 7

Suite 400—1,361 SF  
\$25.00 PSF/Year, NNN

### Building 8

Suite 100-200—1,963 SF  
\$25.00 PSF/Year, NNN

### Building 15

Suite 100—3,357 SF  
Suite 200—3,140 SF  
\$18.00 PSF/Year, NNN

503.675.0900 | Craig Barnard or Ashley Rhea

Email: [craig@barnardcommercial.com](mailto:craig@barnardcommercial.com) | [Ashley@barnardcommercial.com](mailto:Ashley@barnardcommercial.com)

[www.barnardcommercial.com](http://www.barnardcommercial.com) | Mail: 6650 SW Redwood Lane Suite 330, Portland OR 97224

# Village at Main Street



503.675.0900 | Craig Barnard or Ashley Rhea  
Email: [craig@barnardcommercial.com](mailto:craig@barnardcommercial.com) | [Ashley@barnardcommercial.com](mailto:Ashley@barnardcommercial.com)  
[www.barnardcommercial.com](http://www.barnardcommercial.com) | Mail: 6650 SW Redwood Lane Suite 330, Portland OR 97224

Results Driven Retail Solutions<sup>SM</sup>

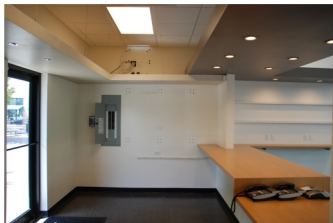
Barnard Commercial  
Real Estate

# Village at Main Street

Building 7 - Suite 400—1,361 SF



Building 8  
Suite 100-200—1,963 SF



503.675.0900 | Craig Barnard or Ashley Rhea  
Email: [craig@barnardcommercial.com](mailto:craig@barnardcommercial.com) | [Ashley@barnardcommercial.com](mailto:Ashley@barnardcommercial.com)  
[www.barnardcommercial.com](http://www.barnardcommercial.com) | Mail: 6650 SW Redwood Lane Suite 330, Portland OR 97224

All information contained herein was obtained from sources deemed reliable. No guarantee is made with respect to accuracy. Specifications subject to change without notice.

Results Driven Retail Solutions<sup>SM</sup>

Barnard Commercial  
Real Estate

# Village at Main Street



Building 2 - Suite 200—1,782 SF

Building 2 - Suite 230—2,497 SF  
Former Dental



503.675.0900 | Craig Barnard or Ashley Rhea  
Email: [craig@barnardcommercial.com](mailto:craig@barnardcommercial.com) | [Ashley@barnardcommercial.com](mailto:Ashley@barnardcommercial.com)  
[www.barnardcommercial.com](http://www.barnardcommercial.com) | Mail: 6650 SW Redwood Lane Suite 330, Portland OR 97224

All information contained herein was obtained from sources deemed reliable. No guarantee is made with respect to accuracy. Specifications subject to change without notice.

Results Driven Retail Solutions<sup>SM</sup>

Barnard Commercial  
Real Estate

# Village at Main Street

Building 15  
Suite 100—3,357 SF



Building 15  
Suite 200—3,096 SF



503.675.0900 | Craig Barnard or Ashley Rhea  
Email: [craig@barnardcommercial.com](mailto:craig@barnardcommercial.com) | [Ashley@barnardcommercial.com](mailto:Ashley@barnardcommercial.com)  
[www.barnardcommercial.com](http://www.barnardcommercial.com) | Mail: 6650 SW Redwood Lane Suite 330, Portland OR 97224

All information contained herein was obtained from sources deemed reliable. No guarantee is made with respect to accuracy. Specifications subject to change without notice.