

Colony

LIGHT INDUSTRIAL

Central Crossing Bus. Park

401 Bordentown-Hedding Road,
Bordentown, New Jersey 08505

66,383± SF Warehouse/Distribution Space



LOCATION:

Located within Central Crossings Business Park

Less than one mile from Exit 56 of I-295

1.6 miles from Interchange 7 of NJ Turnpike

Within a Foreign Trade Zone

Easy access to Philadelphia and New York City via NJ Turnpike, PA Turnpike and I-295

FACILITY:

66,383± SF available for lease within a 142,000± SF warehouse/distribution facility built in 2006.

28' clear ceilings, 48' x 50' column spacing, T-5 lighting fixtures, 137 car parking, ESFR sprinkler system

5 loading docks, 1 drive-in door



NAI Mertz

Scott Mertz, SIOR
scott.mertz@naimertz.com

21 Roland Avenue
Mount Laurel, NJ 08054

office 856.802.6529
cell 609.413.5647

office
cell

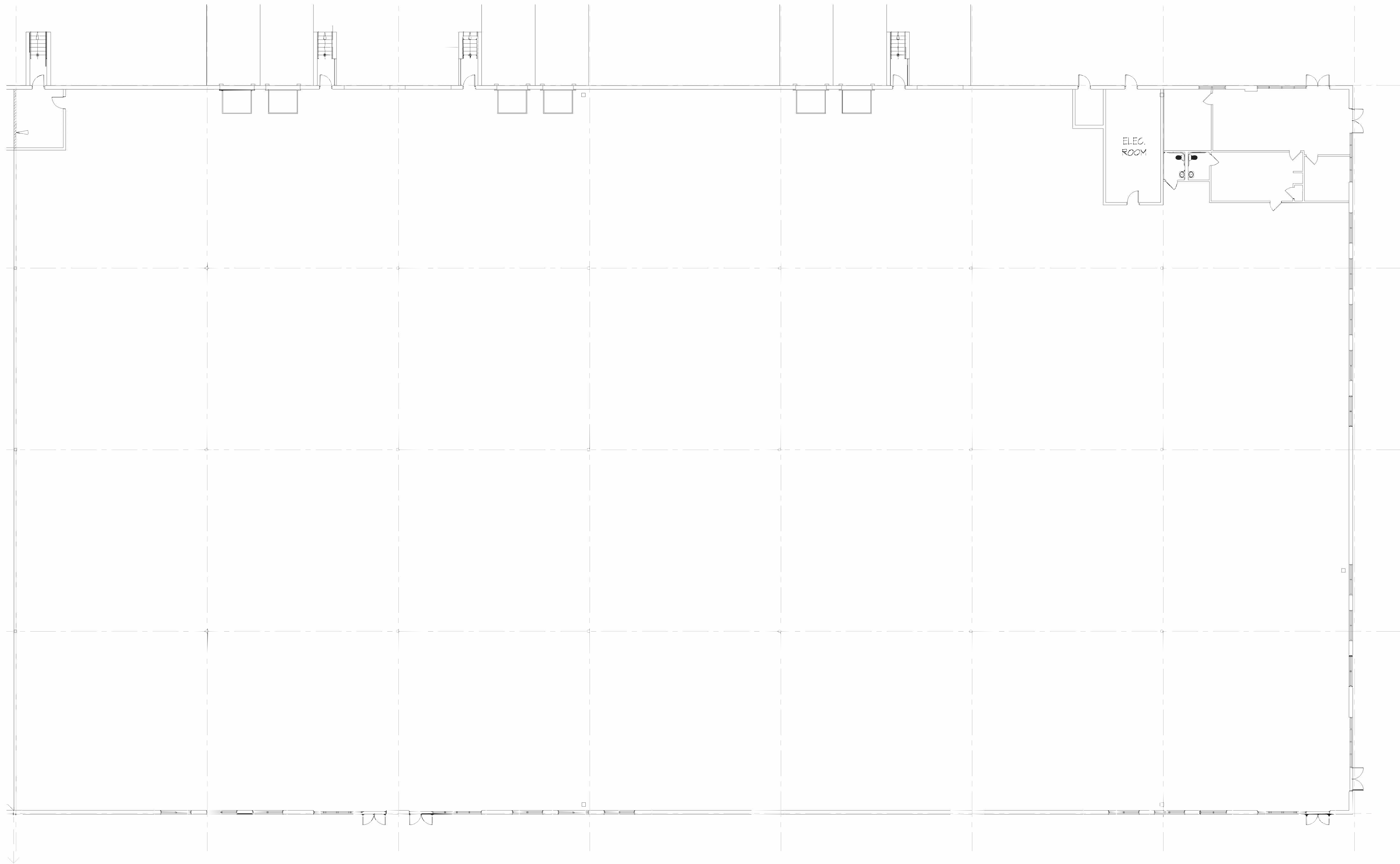
Colony Light Industrial

Aaron Reynolds
areynolds@colonyinc.com

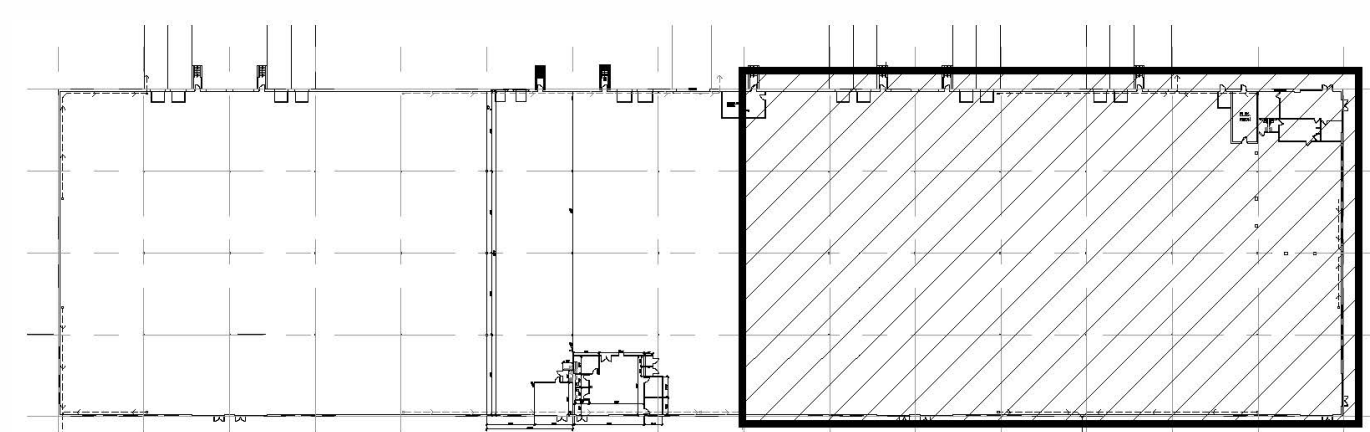
5605 N. MacArthur Blvd., Ste. 350
Irving, Texas 75038

office 972.893.7000





1 EXISTING OFFICE PLAN
 EC-1 SCALE: 3/32" = 1'-0"



NOTE:
 • PURPOSES ONLY.
 • ALL DIMENSIONS SHOULD BE FIELD VERIFIED.
 • THE FLYNN COMPANY IS NOT RESPONSIBLE FOR THE ACCURACY OF THIS DRAWING.

EXISTING CONDITIONS PLAN
401 BORDENTOWN HEDDING ROAD
BORDENTOWN, NJ

EC-1
 Rev. N/A
 April 3, 2018