



"Innovative Solutions at Work"

# RETAIL SPACE FOR LEASE

5648 MAYBERRY SQUARE, SYLVANIA, OH 43560



## OFFERING SUMMARY

Lease Rate:	\$1,885/mo + utilities
Available SF:	1,675 SF
Building Size:	23,756 SF
Year Built:	2003
Zoning:	C-2 General Commercial District
County:	Lucas

## PROPERTY HIGHLIGHTS

- The Shoppes at Mayberry Square
- Located at Centennial & Erie Rd., Sylvania, Ohio
- A quaint area of retail shops & service providers
- Surrounded by homes, loft apartments and condo
- Perfect for a tutoring center, continuing education or achievement classes, internet service provider, computer sales, call center

## DEMOGRAPHICS

	1 MILE	3 MILES	5 MILES
Total Households	1,687	10,892	24,874
Total Population	4,474	28,363	65,065
Average HH Income	\$101,071	\$98,096	\$94,524

The information contained herein is from sources deemed reliable, but no warranty or representation is made as to accuracy thereof. It is subject to correction of errors, omissions, change of price prior to sale or withdrawal from market, all without notice. Further, no warranty or representation is made in regard to any environmental condition that may or may not exist.

**THERESA DECLERCQ**

419.481.3391

tdeclercq@millerdanberry.com

1656 Henthorne Rd Suite 200, Maumee, OH 43537 | 419.877.7777 | www.millerdanberry.com



# RETAIL SPACE FOR LEASE

5648 MAYBERRY SQUARE, SYLVANIA, OH 43560

"Innovative Solutions at Work"

## LOCATION INFORMATION

Street Address	5648 Mayberry Square
City, State, Zip	Sylvania, OH 43560
County/Township	Lucas
Nearest Intersection	Erie
Lot Size	.3213
Parcel #	82-00084
Zoning	C-2 General Commercial



## BUILDING SPECIFICATIONS

Building Size	23,756 SF
Building Dimensions	49' x 252' irregular
Year Built	2003
Number Of Floors	3
Construction Type	Masonry/Steel
Roof	Flat
Restrooms	One
Delivery Door	Rear



## LEASE DETAILS

Lease Term	3-5 years
Improvements	Negotiable
Tenant Responsibilities	Janitorial, lease content & liability insurance, utilities



## UTILITIES

Gas	Columbia Gas
Electric	Toledo Edison
Water/Sewer/Sanitary	City of Toledo, City of Sylvania

**THERESA DECLERCQ**

419.481.3391

tdeclercq@millerdanberry.com

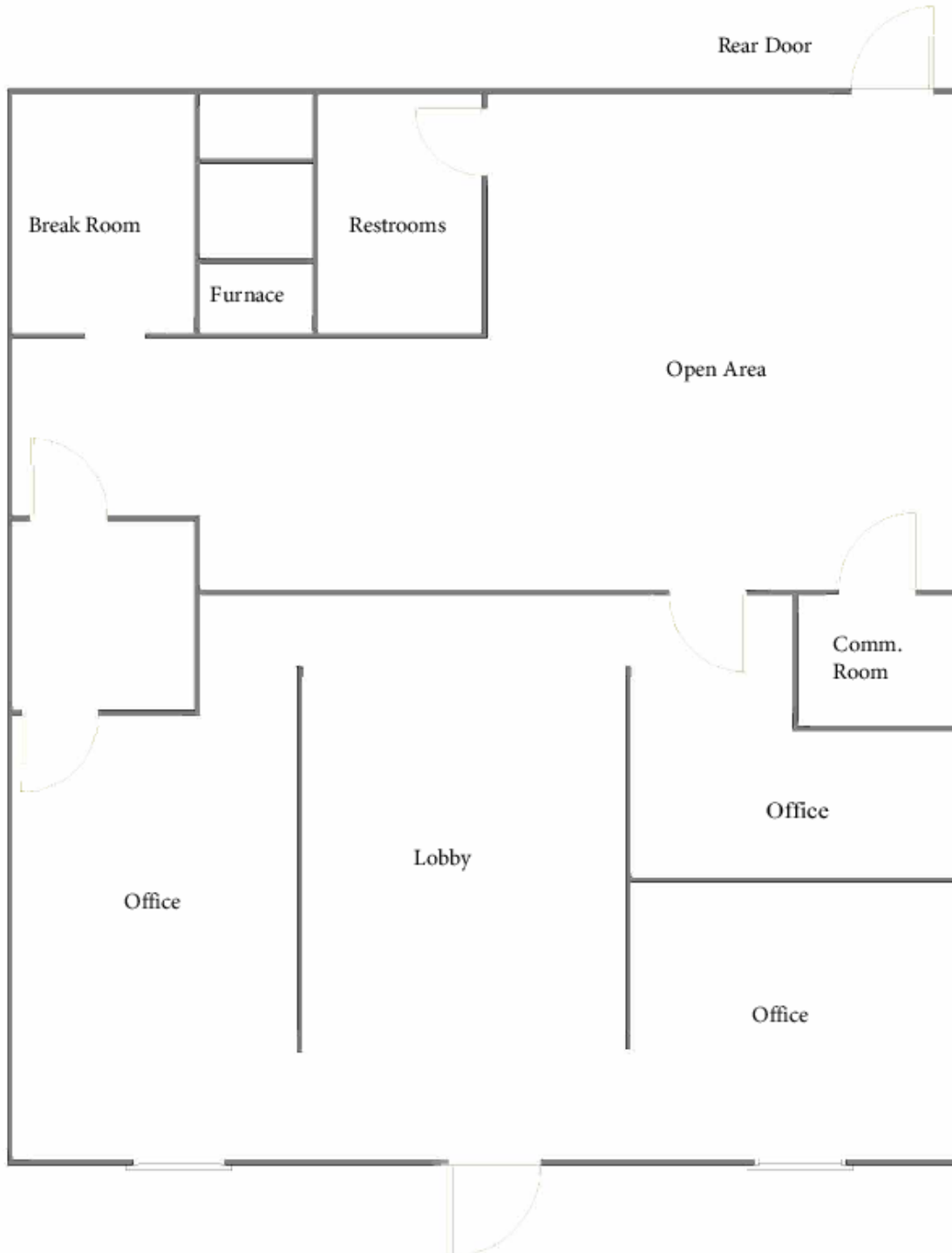
1656 Henthorne Rd Suite 200, Maumee, OH 43537 | 419.877.7777 | www.millerdanberry.com



"Innovative Solutions at Work"

# RETAIL SPACE FOR LEASE

5648 MAYBERRY SQUARE, SYLVANIA, OH 43560



**THERESA DECLERCQ**

419.481.3391

tdeclercq@millerdanberry.com

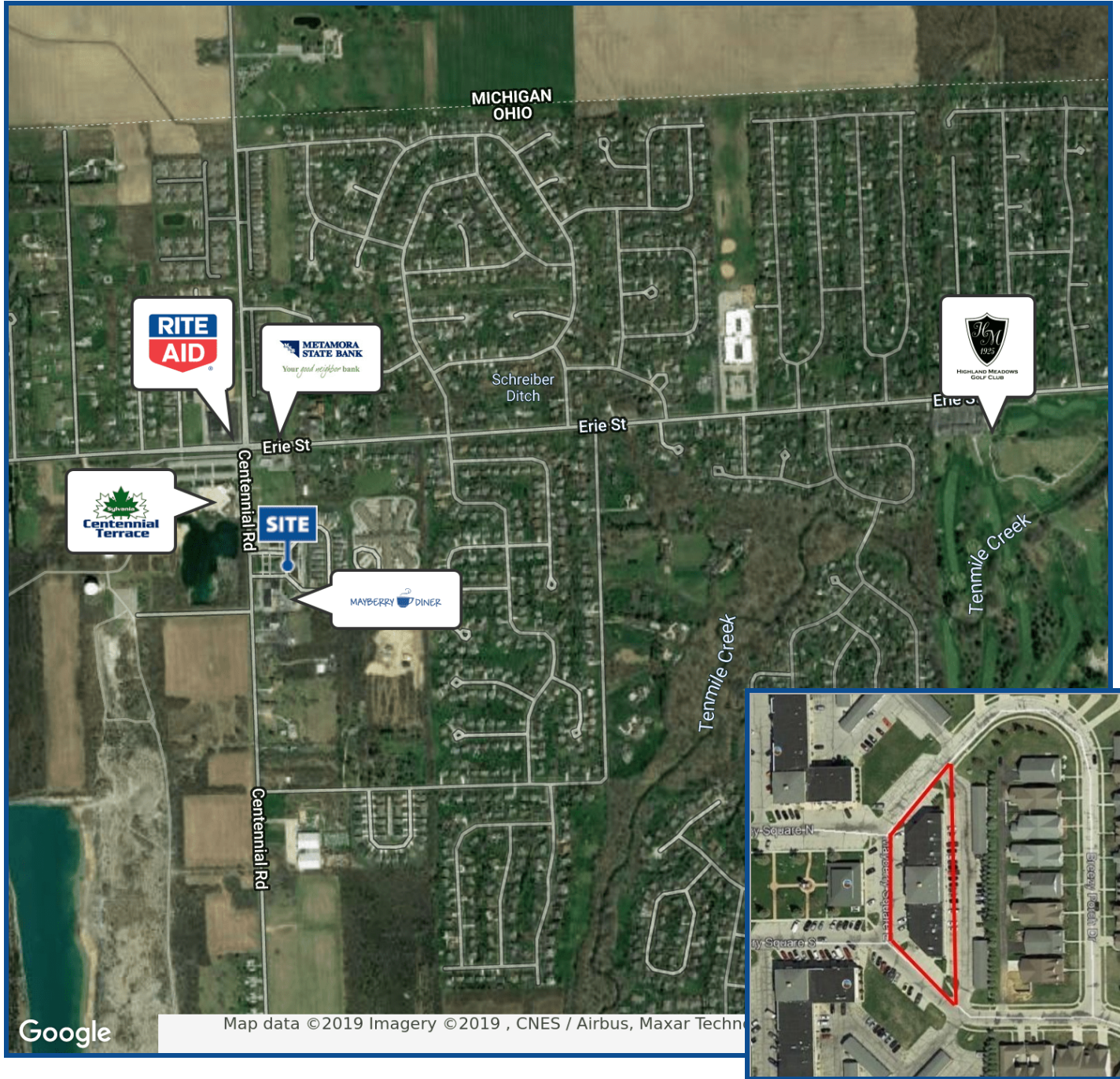
1656 Henthorne Rd Suite 200, Maumee, OH 43537 | 419.877.7777 | www.millerdanberry.com



# RETAIL SPACE FOR LEASE

5648 MAYBERRY SQUARE, SYLVANIA, OH 43560

"Innovative Solutions at Work"



**THERESA DECLERCQ**

419.481.3391

[tdeclercq@millerdanberry.com](mailto:tdeclercq@millerdanberry.com)

1656 Henthorne Rd Suite 200, Maumee, OH 43537 | 419.877.7777 | [www.millerdanberry.com](http://www.millerdanberry.com)