

# Pauahi Tower

1003 Bishop Street, Suite 2700, Honolulu, HI 96813



## PRIVATE OFFICES

Highly professional private offices for individuals and teams that are flexible and scaled for growth.

## MEETING ROOMS

Spacious, well-appointed meeting rooms with on-site administrative support. Available for an hour, day or longer.

## VIRTUAL OFFICES

Establish a business presence with mail handling, phone answering or meeting room time.

## ABOUT THIS LOCATION

Spectacular floor-to-ceiling views! Welcome to Pauahi Tower at Bishop Square. This 13,465 square foot workspace has 53 recently constructed window and interior offices. Enjoy the view from your private office or the lush one-acre landscaped park surrounding the property. This 28-story Class-A high-rise is also in the heart of Honolulu's Central Business and Financial District – within walking distance of shops, restaurants, and several court buildings.

## CONTACT US

Let's touch base! Contact the on-site General Manager at 808-237-2400 or [HONmanager@premierworkspaces.com](mailto:HONmanager@premierworkspaces.com) to schedule a tour.



# Pauahi Tower

1003 Bishop Street, Suite 2700, Honolulu, HI 96813



## PREMIER AMENITIES

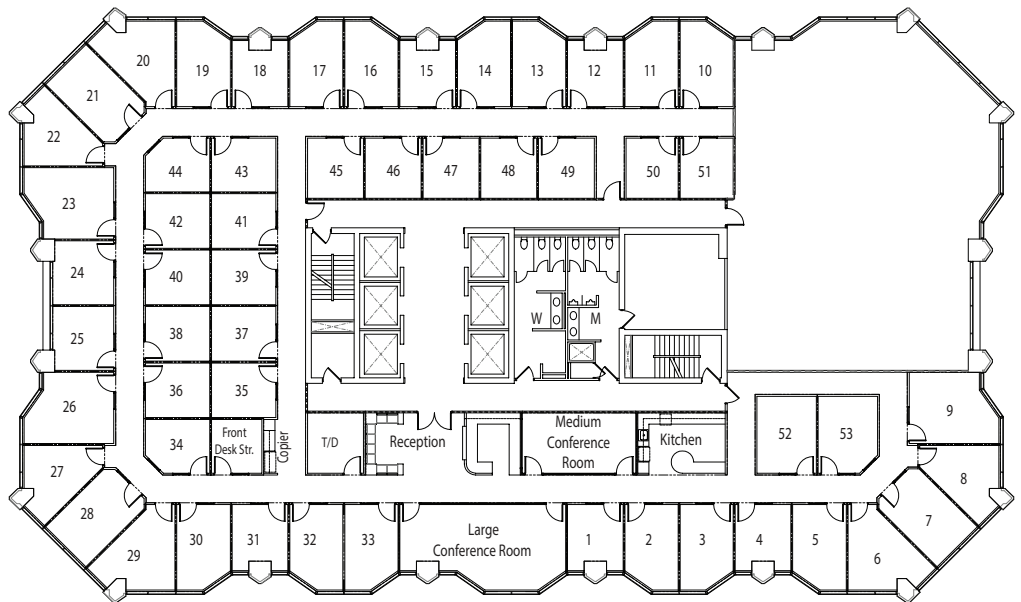
Our private suites can be easily customized to fit your desired aesthetic and brand.

- Private Offices
- Team Rooms
- High Speed Internet
- Telephone Answering
- Mail Collection
- Equipped Kitchen
- Day Offices
- Meeting Rooms
- Daily Janitorial
- Furnished or Unfurnished

## PREMIER DIFFERENCE

We've been perfecting the professional workspace for over 17 years.

- Highly-Professional Atmosphere
- On-Site Manager & Support Staff
- Scalable Solutions for Individuals and Teams
- On-Site Billing
- 90+ Locations Nationwide



## NEARBY AMENITIES

Bishop Square is the largest and most prestigious office complex in the heart of downtown Honolulu. It is comprised of two Class-A office towers totaling almost 1 million square feet, which are linked together by a one-acre landscaped park and basement parking facility.

### Nearby Amenities:

- Aloha Tower Marketplace
- Courts – 5th District, Federal, and Family (walking distance)
- Hawaii State Capitol
- Honolulu City Hall
- Honolulu Harbor
- Kamehameha Statue
- Iolani Palace
- Starbucks

### Property Amenities:

- Tamarind Park
- Restaurants - Aloha Sushi, Honolulu Coffee Co and San Francisco Salad

### Nearby Transit:

- Freeways – H1, Nimitz Hwy, Pali Hwy
- Daniel K. Inouye International Airport (HNL)
- Bus – Bus Stop

## CONTACT US

Let's touch base! Contact the on-site General Manager at 808-237-2400 or [HONmanager@premierworkspaces.com](mailto:HONmanager@premierworkspaces.com) to schedule a tour.