

Denver West[®] Office Park

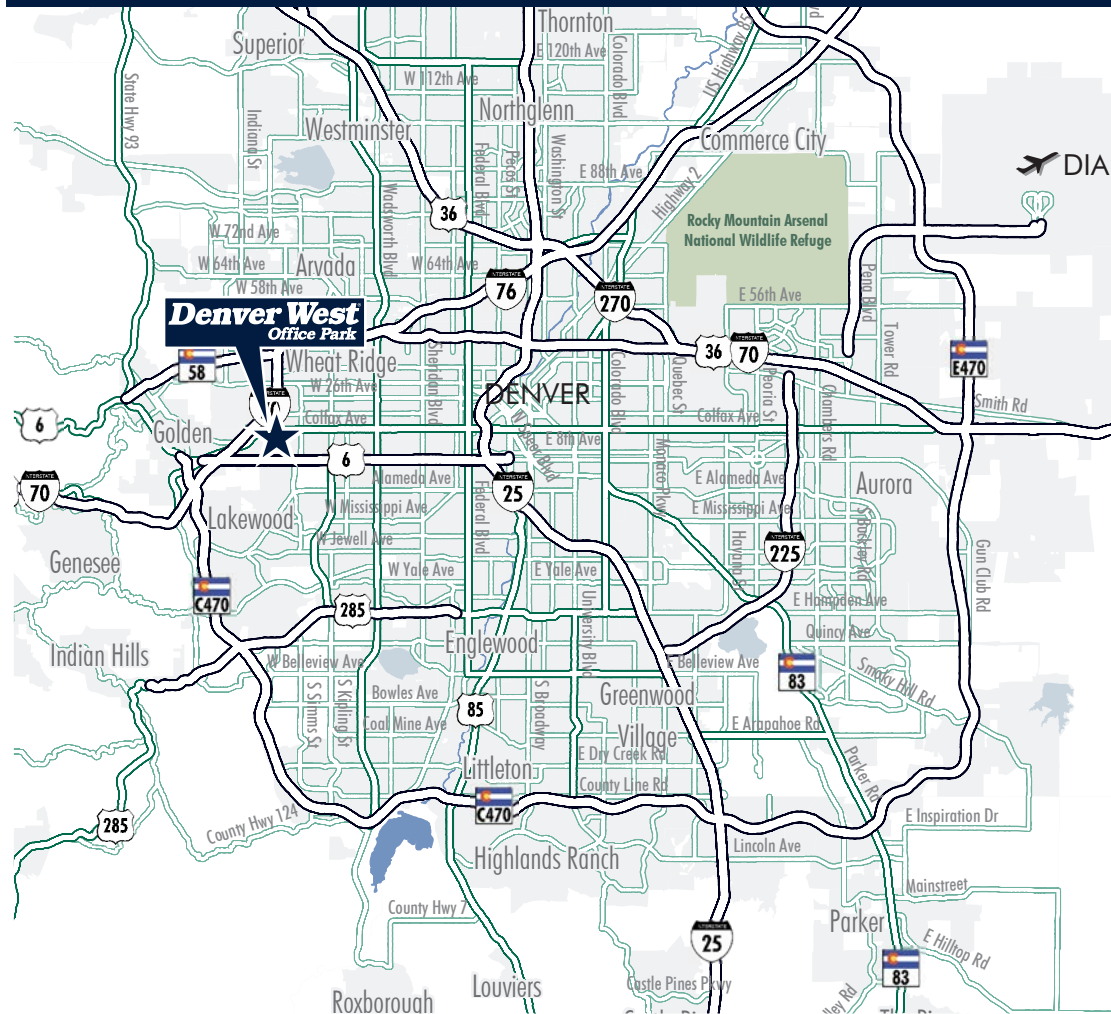
BUILDING

18

1627 COLE BOULEVARD | LAKEWOOD, COLORADO



BEAUTIFUL PARK-LIKE SETTING AT THE GATEWAY TO THE ROCKIES



For more information,
please contact:

Blake Harris
720.528.6416
blake.harris@cbre.com
www.cbre.com/blake.harris

Frank Kelley
720.528.6344
frank.kelley@cbre.com
www.cbre.com/frank.kelley

8390 E. Crescent Parkway
Suite 300
Greenwood Village, CO 80111
www.cbre.com/denver

CBRE

© 2014 CBRE, Inc. This information has been obtained from sources believed reliable. We have not verified it and make no guarantee, warranty or representation about it. Any projections, opinions, assumptions or estimates used are for example only and do not represent the current or future performance of the property. You and your advisors should conduct a careful, independent investigation of the property to determine to your satisfaction the suitability of the property for your needs. All marks displayed on this document are the property of their respective owners. Photos herein are the property of their respective owners and use of these images without the express written content of the owner is prohibited. REVISED: 08/22/14

Denver West[®] Office Park

BUILDING

18

1627 COLE BOULEVARD | LAKEWOOD, COLORADO



BEAUTIFUL PARK-LIKE SETTING AT THE GATEWAY TO THE ROCKIES

PROPERTY FEATURES:



Ownership
Local & On-Site



Hotel Proximity
Marriott Hotel - 305 room



31 Restaurants
within 1/2 mile



Updated HVAC
Electronic energy management
system in all buildings



On-Site Health Club
aerobics, weights,
massage, personal training



Easy Access
to Downtown, DIA,
I-70 mountain towns



Nearby Retail
1.2M SF Colorado Mills Mall
300k SF Denver West Village Center



Housing
Two Class 'A' apartments - 572 units
Executive foothills housing

AVAILABLE SF:

Total RSF:	83,138 RSF
Level 1:	24,398 RSF
Level 2:	25,671 RSF
Level 3:	25,661 RSF
Level 4:	7,408 RSF

RATE:

\$18.50-\$20.00 FSG

www.denverwest.com

CBRE

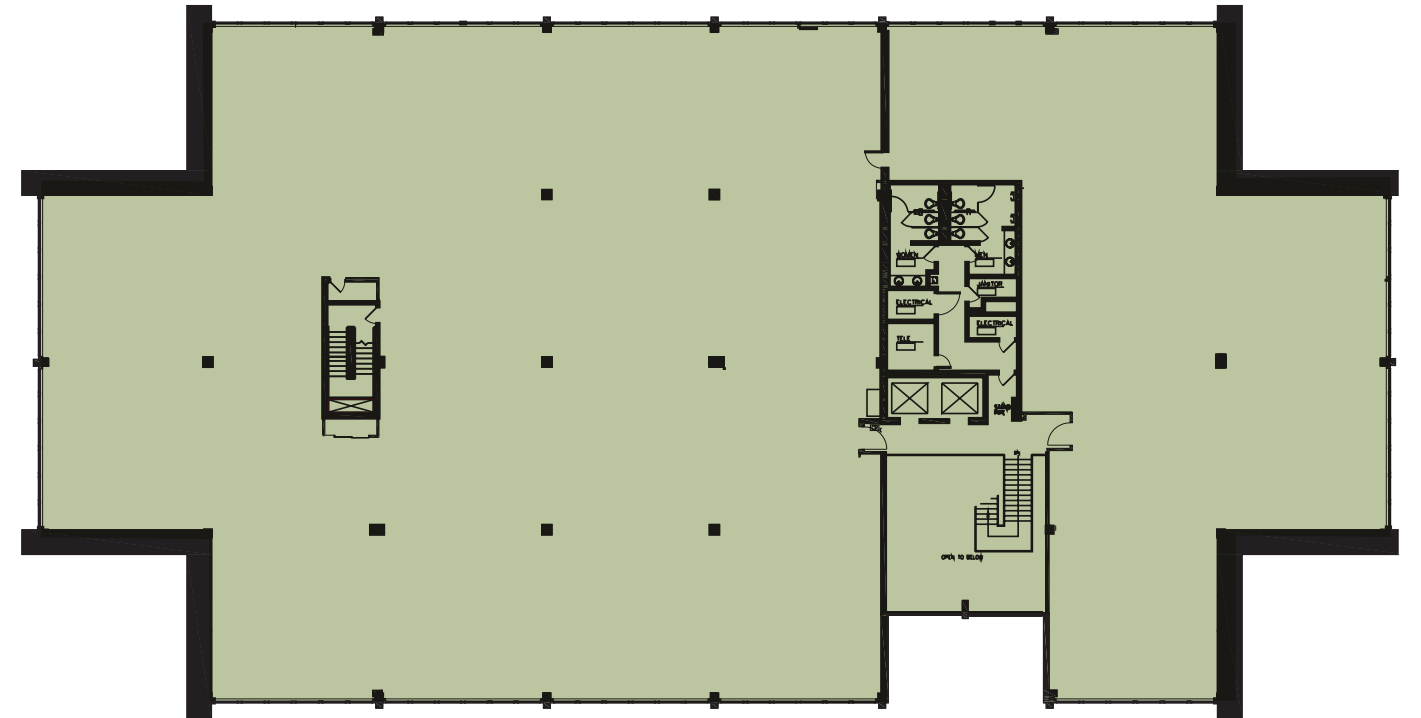
LEVEL 1: 24,398 RSF



LEVEL 2: 25,671 RSF



LEVEL 3: 25,661 RSF



LEVEL 4: 7,408 RSF

