

Office Space For Lease

4748 Engle Rd, Carmichael, CA 95608



- ◆ **4 Suites Available**

~~Suite 105: 600 sf - LEASED~~

~~Suite 202: 700 sf - LEASED~~

Suite 204: 800 sf

Suite 205: 650 sf

Suite 206: 1,000 sf

Suite 207: 900 sf

- ◆ **Two Story 11,965 sf Office Building**
- ◆ **Ample Parking**
- ◆ **Elevator**
- ◆ **Mature Landscaping**
- ◆ **Full Commission to Procuring Broker**
- ◆ **Some suites equipped with sinks in offices**
- ◆ **FANTASTIC PRICING and GOING FAST!**

FOR FURTHER INFORMATION, CONTACT:

DENNIS VOLLMAN

dvollman@thevollmancompany.com

LU ANN HENDERSON

lhenderson@thevollmancompany.com

**Lease Rate: \$.65psf
NNN - \$.26/psf**



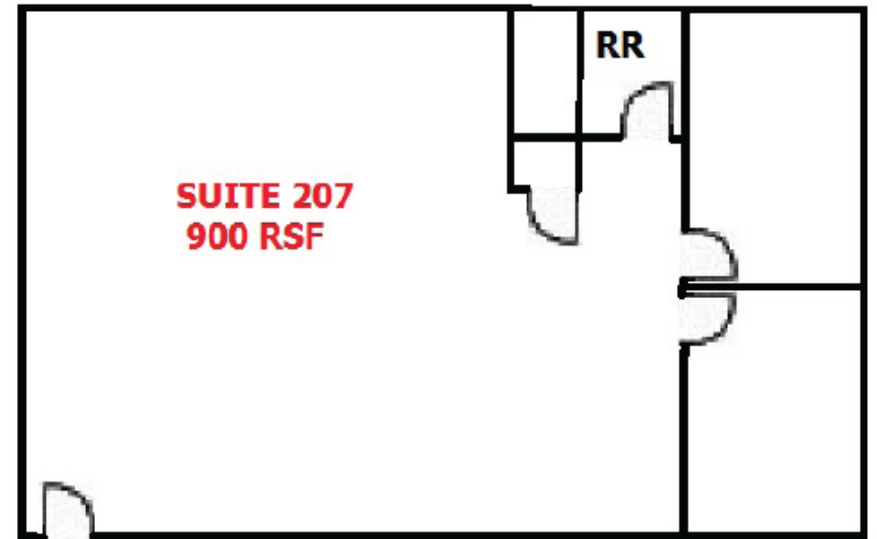
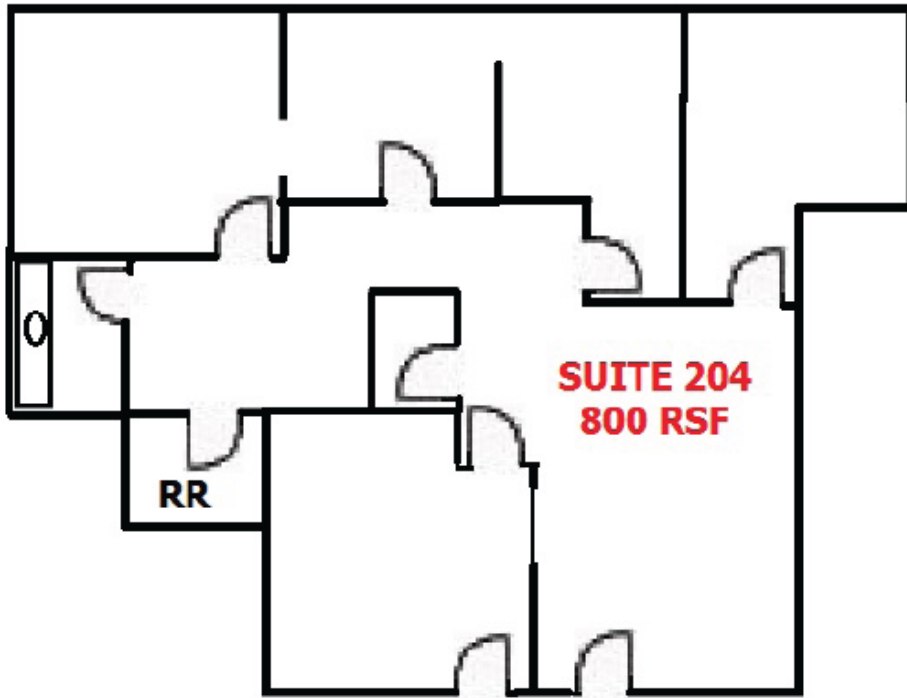
License # 00915268

THE VOLLMAN COMPANY, INC.
COMMERCIAL REAL ESTATE BROKERAGE
1900 POINT WEST WAY, SUITE 161
SACRAMENTO, CA 95815-4706
916/929-2000 FAX 916/929-7857
www.thevollmancompany.com

THE ABOVE INFORMATION, WHILE NOT GUARANTEED, HAS BEEN SECURED FROM SOURCES WE BELIEVE TO BE RELIABLE

Office Space For Lease

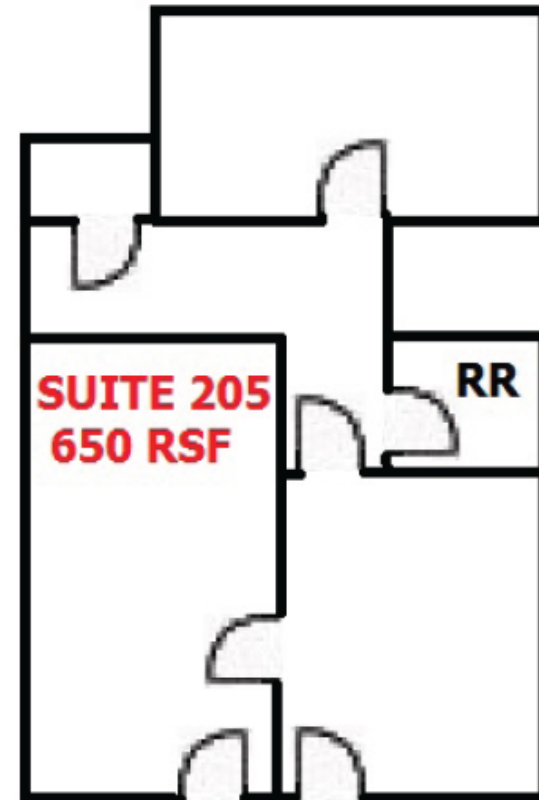
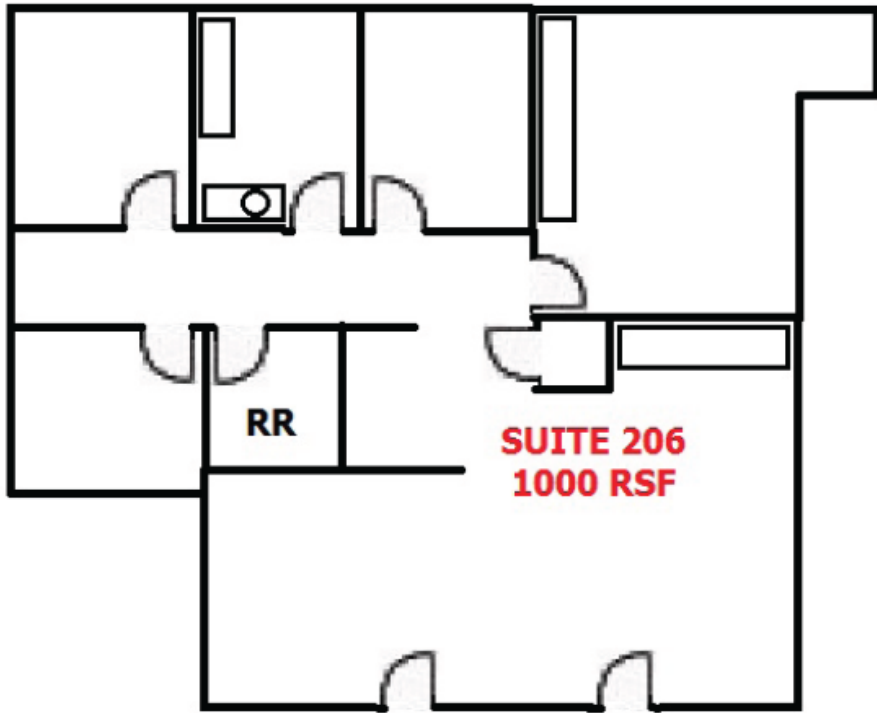
4748 Engle Rd, Carmichael, CA 95608



THE ABOVE INFORMATION, WHILE NOT GUARANTEED, HAS BEEN SECURED FROM SOURCES WE BELIEVE TO BE RELIABLE

Office Space For Lease

4748 Engle Rd, Carmichael, CA 95608



THE ABOVE INFORMATION, WHILE NOT GUARANTEED, HAS BEEN SECURED FROM SOURCES WE BELIEVE TO BE RELIABLE

Office Space For Lease

4748 Engle Rd, Carmichael, CA 95608



THE ABOVE INFORMATION, WHILE NOT GUARANTEED, HAS BEEN SECURED FROM SOURCES WE BELIEVE TO BE RELIABLE