



FOR LEASE

# 6416 Pacific Hwy E

FIFE, WA



Office Space in Fife with I-5 Building  
Signage Available

**WILL FRAME**  
253.722.1412  
will.frame@kidder.com

**DREW FRAME**  
253.722.1433  
drew.frame@kidder.com

**Kidder  
Mathews**

This information supplied herein is from sources we deem reliable. It is provided without any representation, warranty, or guarantee, expressed or implied as to its accuracy. Prospective Buyer or Tenant should conduct an independent investigation and verification of all matters deemed to be material, including, but not limited to, statements of income and expenses. Consult your attorney, accountant, or other professional advisor.

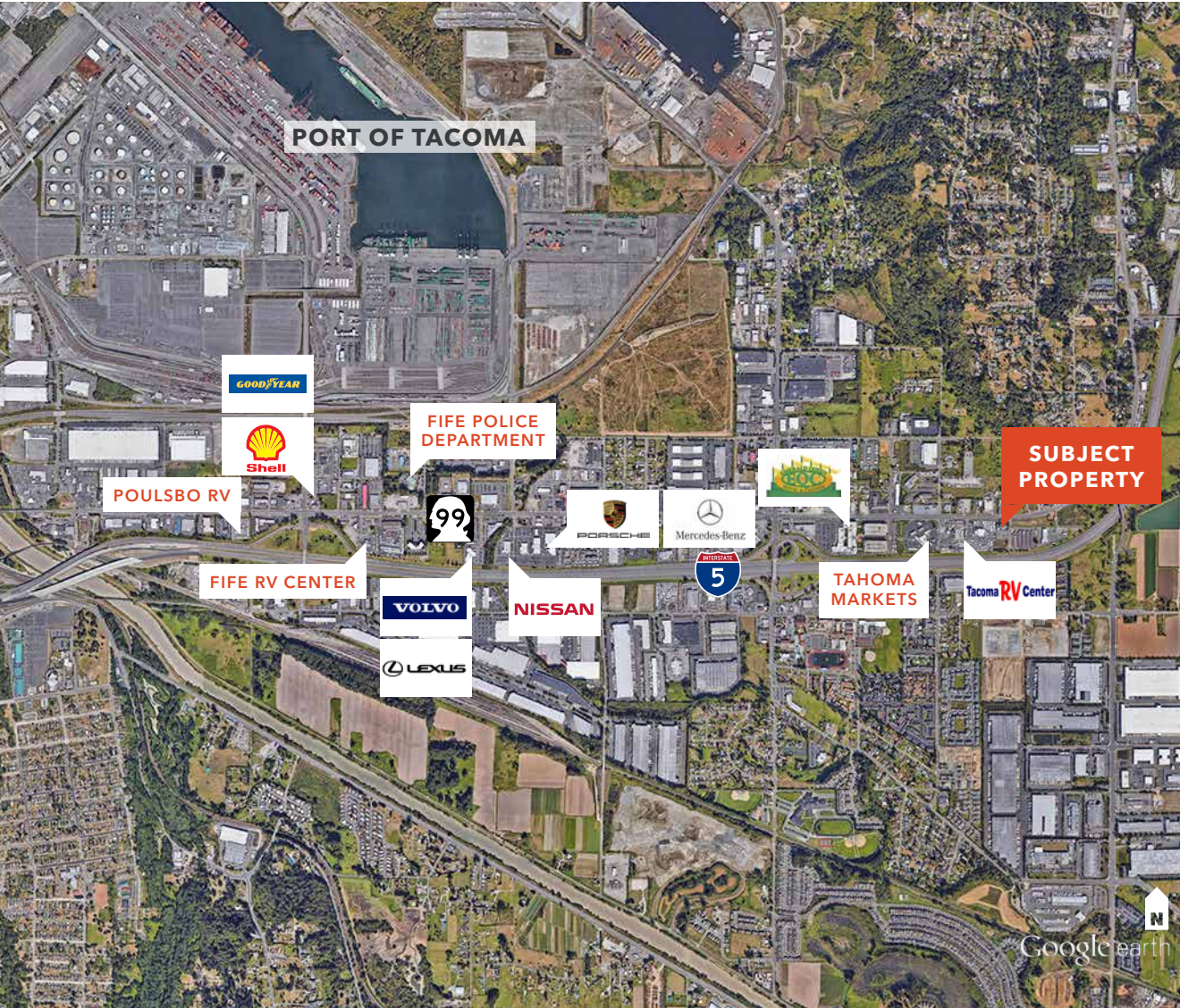
**KIDDER.COM**



FOR LEASE

# 6416 Pacific Hwy E

FIFE, WA



## Exterior building signage visible from I-5

**FIRST FLOOR** 11,895 SF divisible to 1,500 SF

**SECOND FLOOR** 11,482 SF divisible to 1,500 SF

**\$22.00 PSF** per year, modified gross

**ON-SITE** surface parking available at 3 stalls/1,000 SF

**LOCATED** on Pacific Highway running adjacent with I-5 in Fife

### DRIVE TIMES

Tacoma	10 Minutes
Federal Way	17 Minutes
Kent	20 Minutes
Sea Tac	25 Minutes
Seattle	30 Minutes
Olympia	35 Minutes

**WILL FRAME**  
253.722.1412  
will.frame@kidder.com

**DREW FRAME**  
253.722.1433  
drew.frame@kidder.com

KIDDER.COM

This information supplied herein is from sources we deem reliable. It is provided without any representation, warranty, or guarantee, expressed or implied as to its accuracy. Prospective Buyer or Tenant should conduct an independent investigation and verification of all matters deemed to be material, including, but not limited to, statements of income and expenses. Consult your attorney, accountant, or other professional advisor.

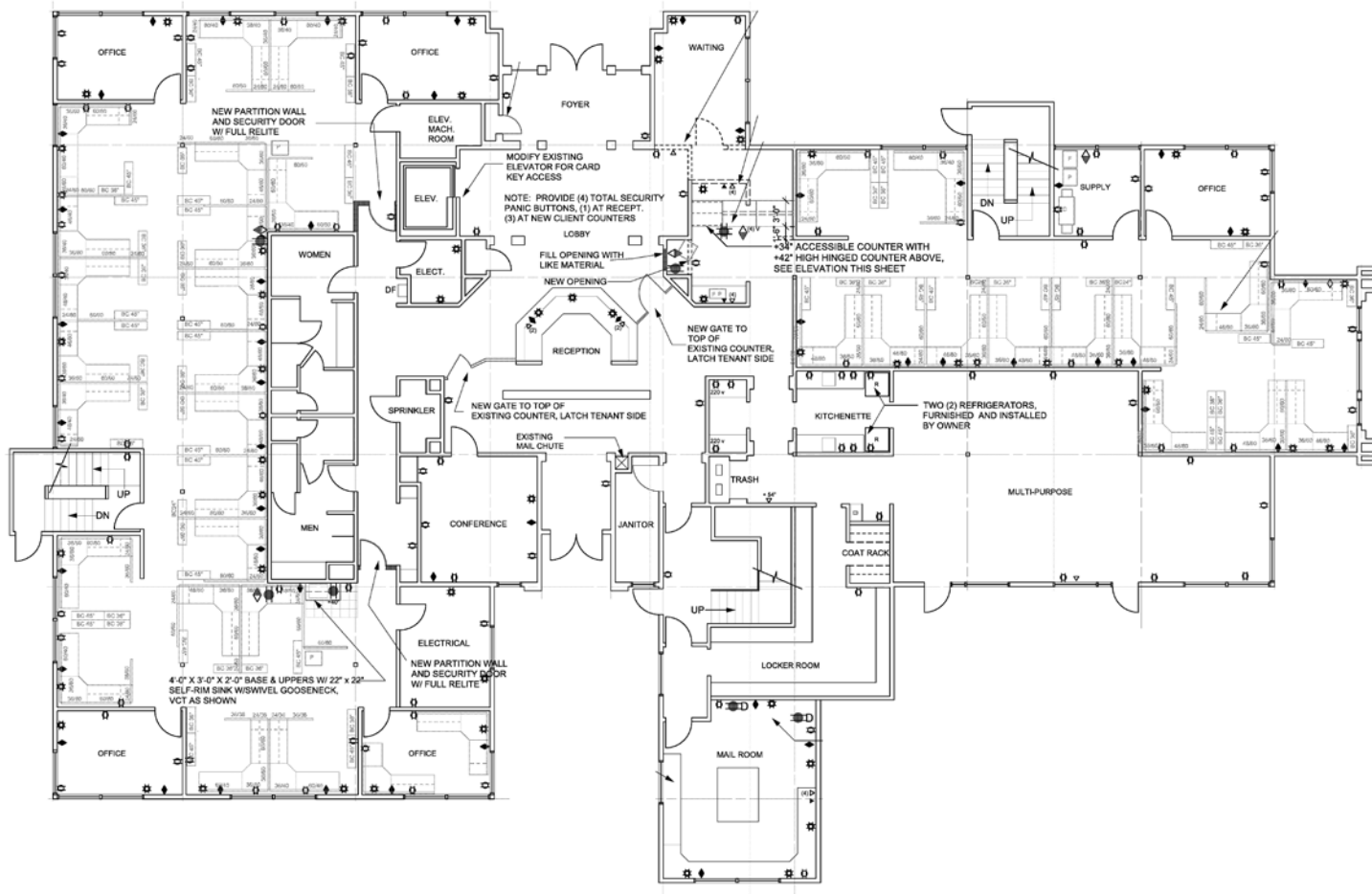


FOR LEASE

# 6416 Pacific Hwy E

FIFE, WA

## First Floor



KIDDER.COM

This information supplied herein is from sources we deem reliable. It is provided without any representation, warranty, or guarantee, expressed or implied as to its accuracy. Prospective Buyer or Tenant should conduct an independent investigation and verification of all matters deemed to be material, including, but not limited to, statements of income and expenses. Consult your attorney, accountant, or other professional advisor.

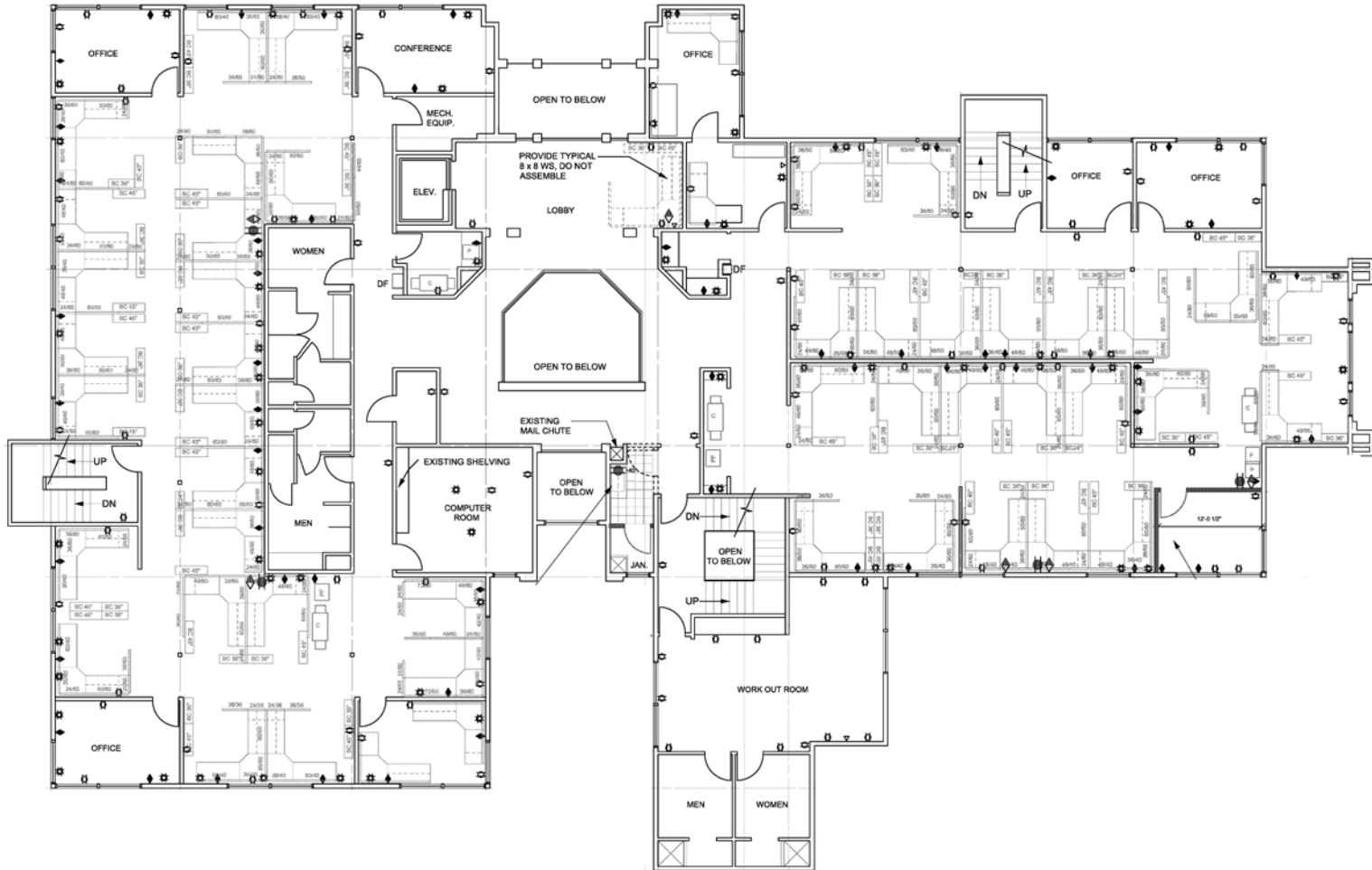


FOR LEASE

# 6416 Pacific Hwy E

FIFE, WA

## Second Floor



KIDDER.COM

This information supplied herein is from sources we deem reliable. It is provided without any representation, warranty, or guarantee, expressed or implied as to its accuracy. Prospective Buyer or Tenant should conduct an independent investigation and verification of all matters deemed to be material, including, but not limited to, statements of income and expenses. Consult your attorney, accountant, or other professional advisor.

