



# ONE NEWPORT

3605 132nd Ave SE, Bellevue



## Contact

**Gary Guenther**  
Senior Vice President, Partner  
425.450.1154  
gary@kiddermathews.com

[kiddermathews.com](http://kiddermathews.com)



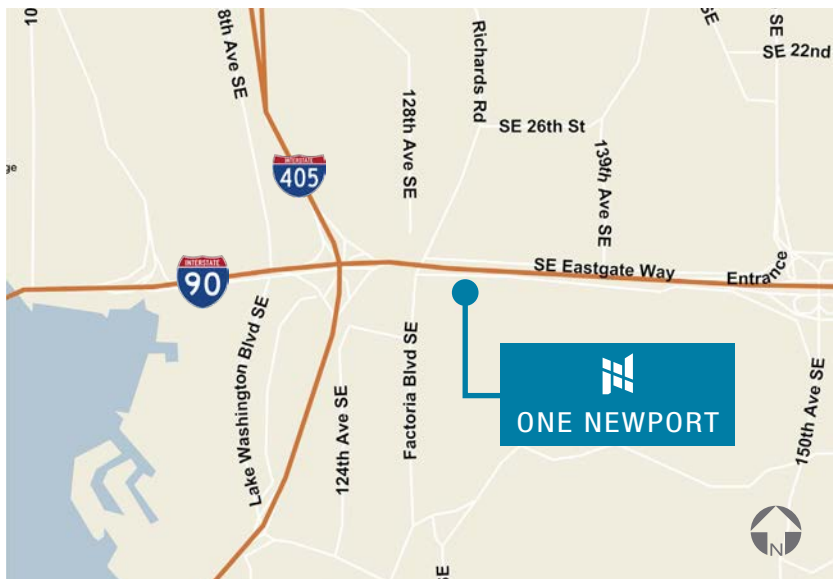
# Property Features



ONE NEWPORT

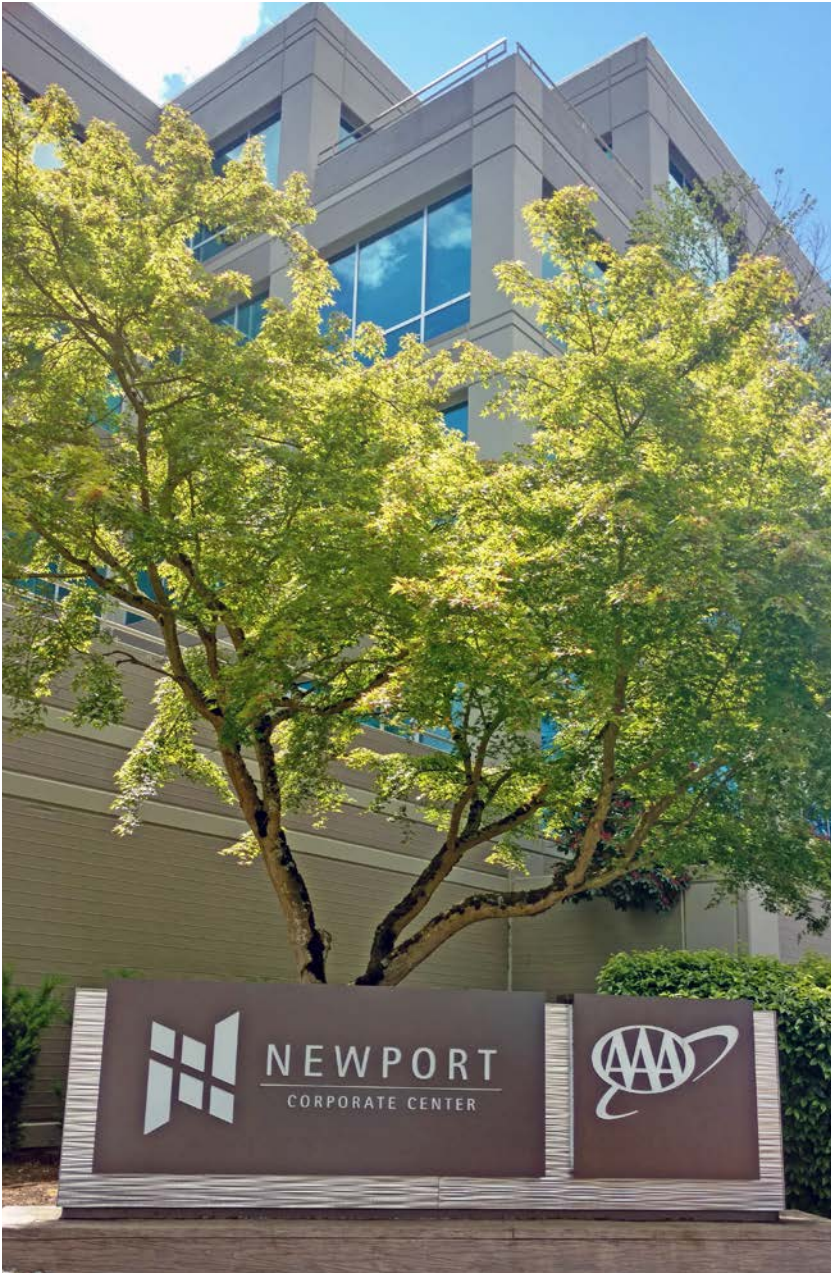
## ONE NEWPORT

Suite 400	20,837 SF (divisible) Available Now
Parking	Covered parking ratio of 3.5/1,000
Amenities	Outstanding views of Seattle, Olympic Mountains and surrounding area
Location	Easy access to I-90 and I-405
Transit	9 bus routes and 5 bus stops within walking distance
Type	Class A
LEED	Silver certified



This information supplied herein is from sources we deem reliable. It is provided without any representation, warranty or guarantee, expressed or implied as to its accuracy. Prospective Buyer or Tenant should conduct an independent investigation and verification of all matters deemed to be material, including, but not limited to, statements of income and expenses. Consult your attorney, accountant, or other professional advisor.

# Property Exterior

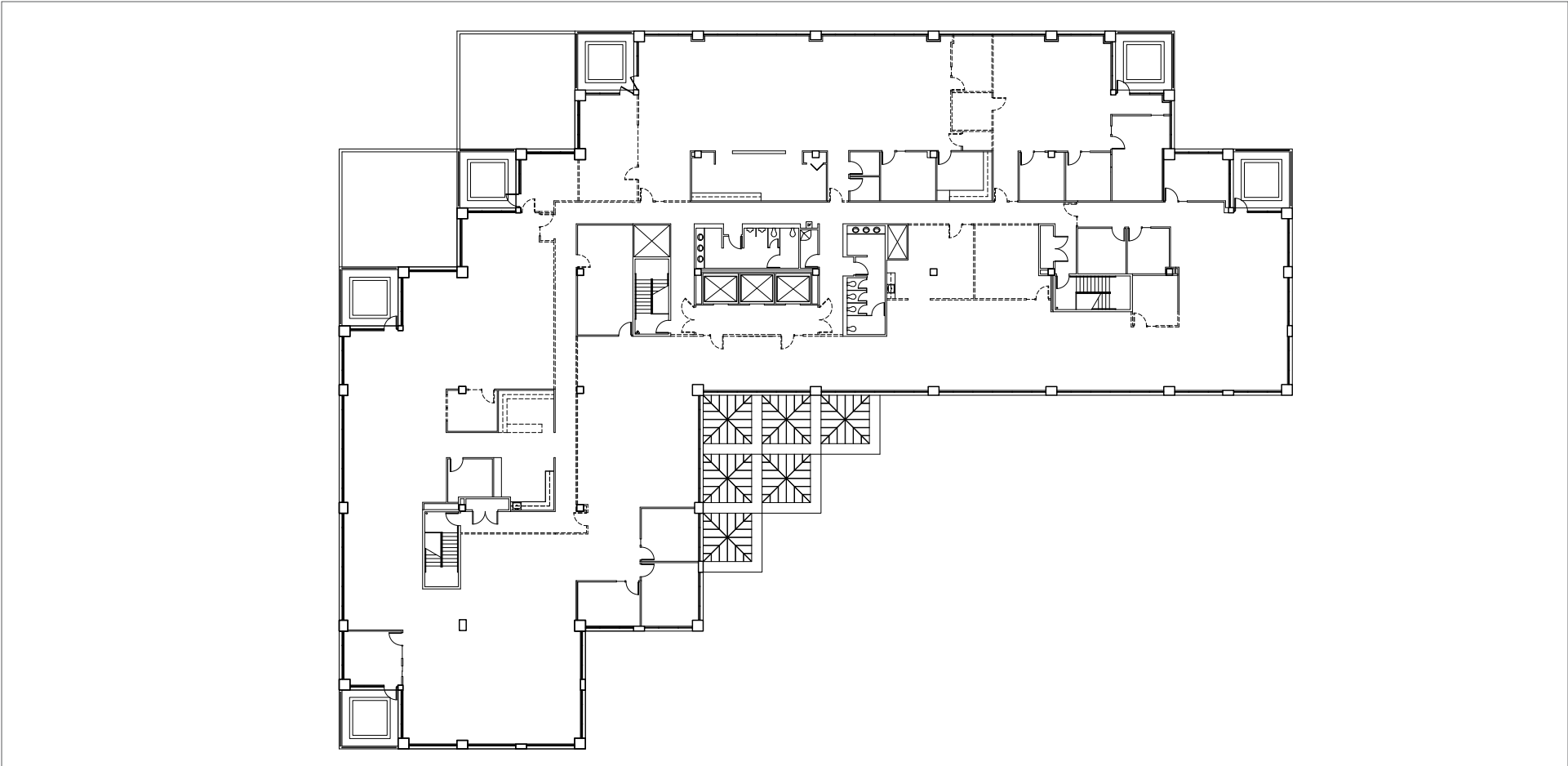


# Location Aerial



# Property Floor Plan

Full Floor Plan - 20,837 SF



# Property Floor Plan



Hypothetical Floor Plan

Single Tenant - 20,837 SF



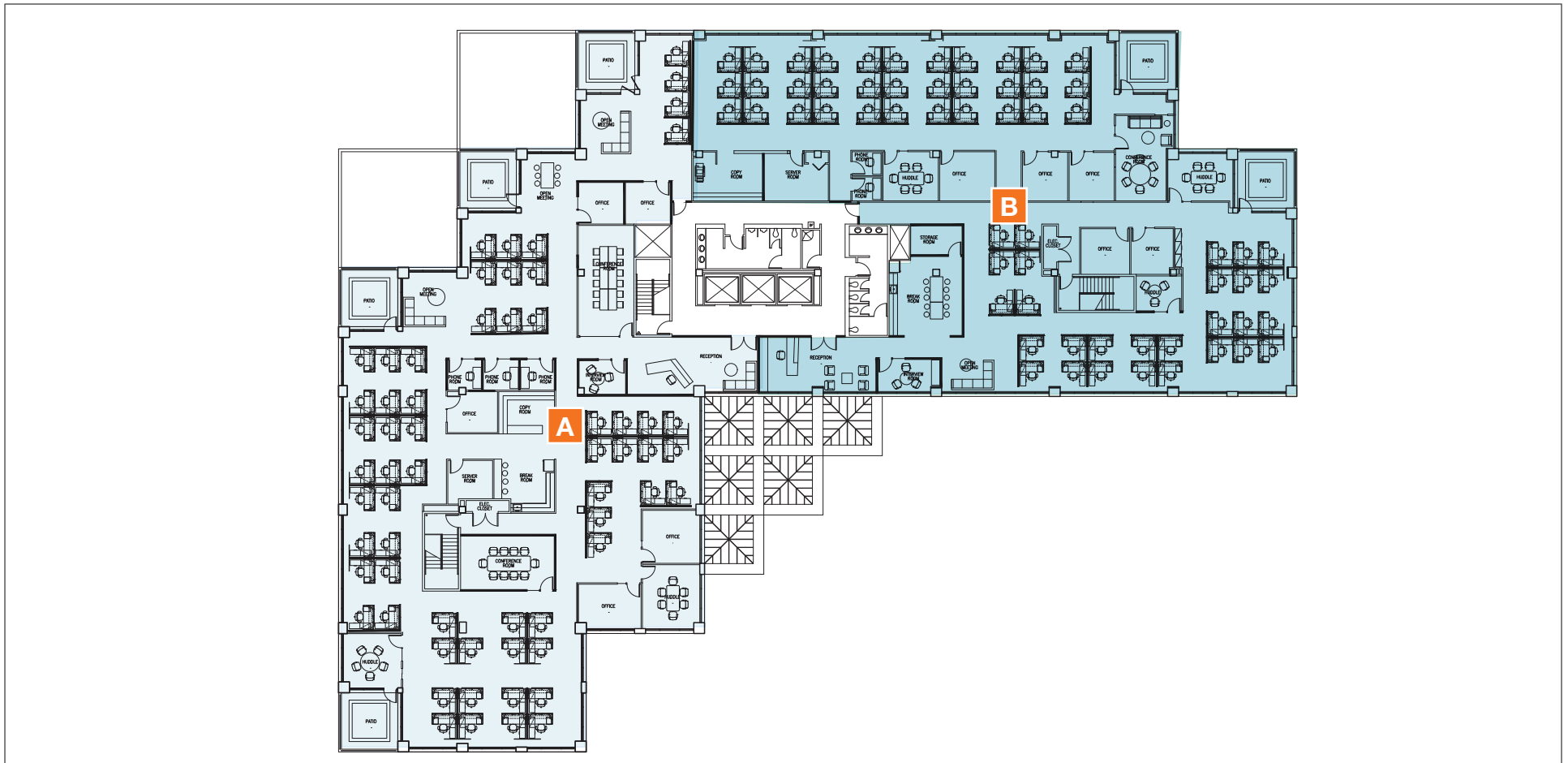
# Property Floor Plan



## Two Tenant - Hypothetical Floor Plan

**Tenant A - 10,896 SF**

**Tenant B - 9,941 SF**



# Property Floor Plan

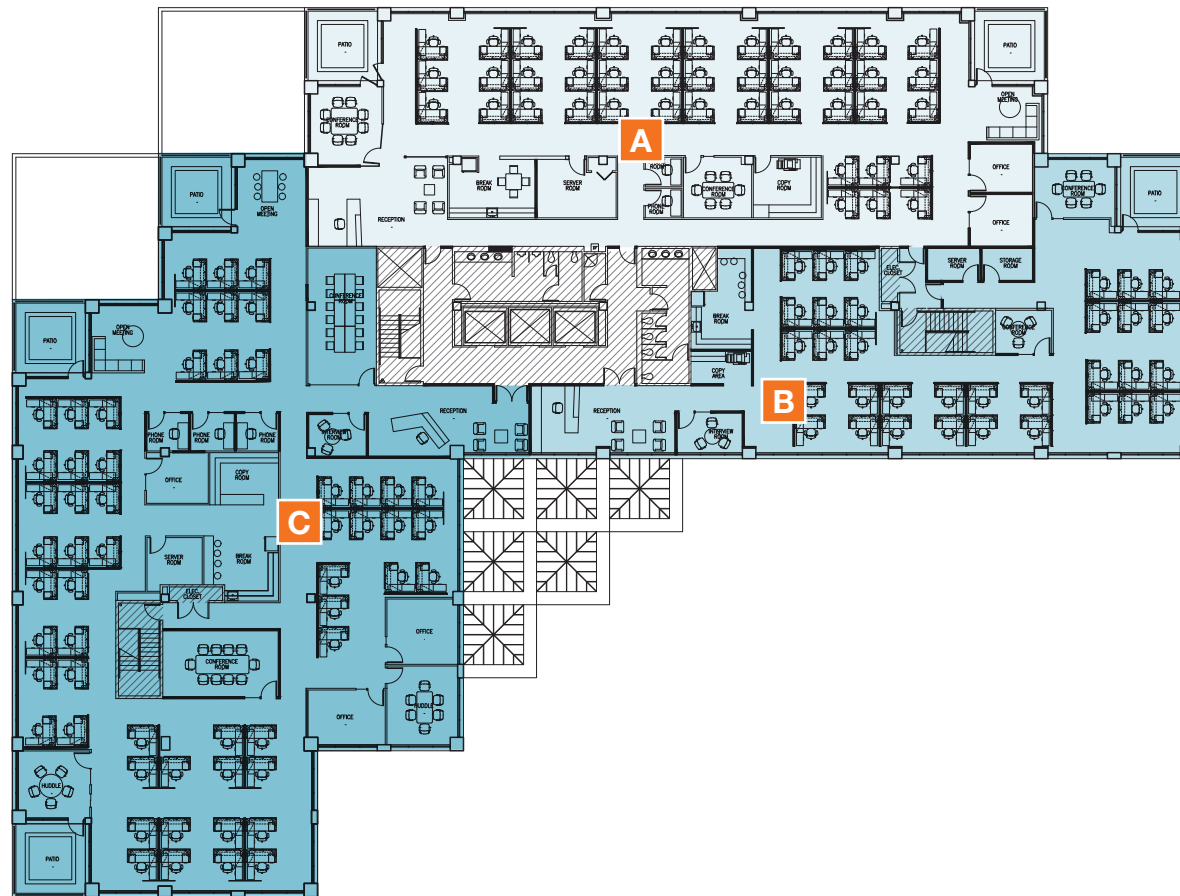


## Three Tenant - Hypothetical Floor Plan

Tenant A - 6,530 SF

Tenant B - 4,630 SF

Tenant C - 9,677 SF

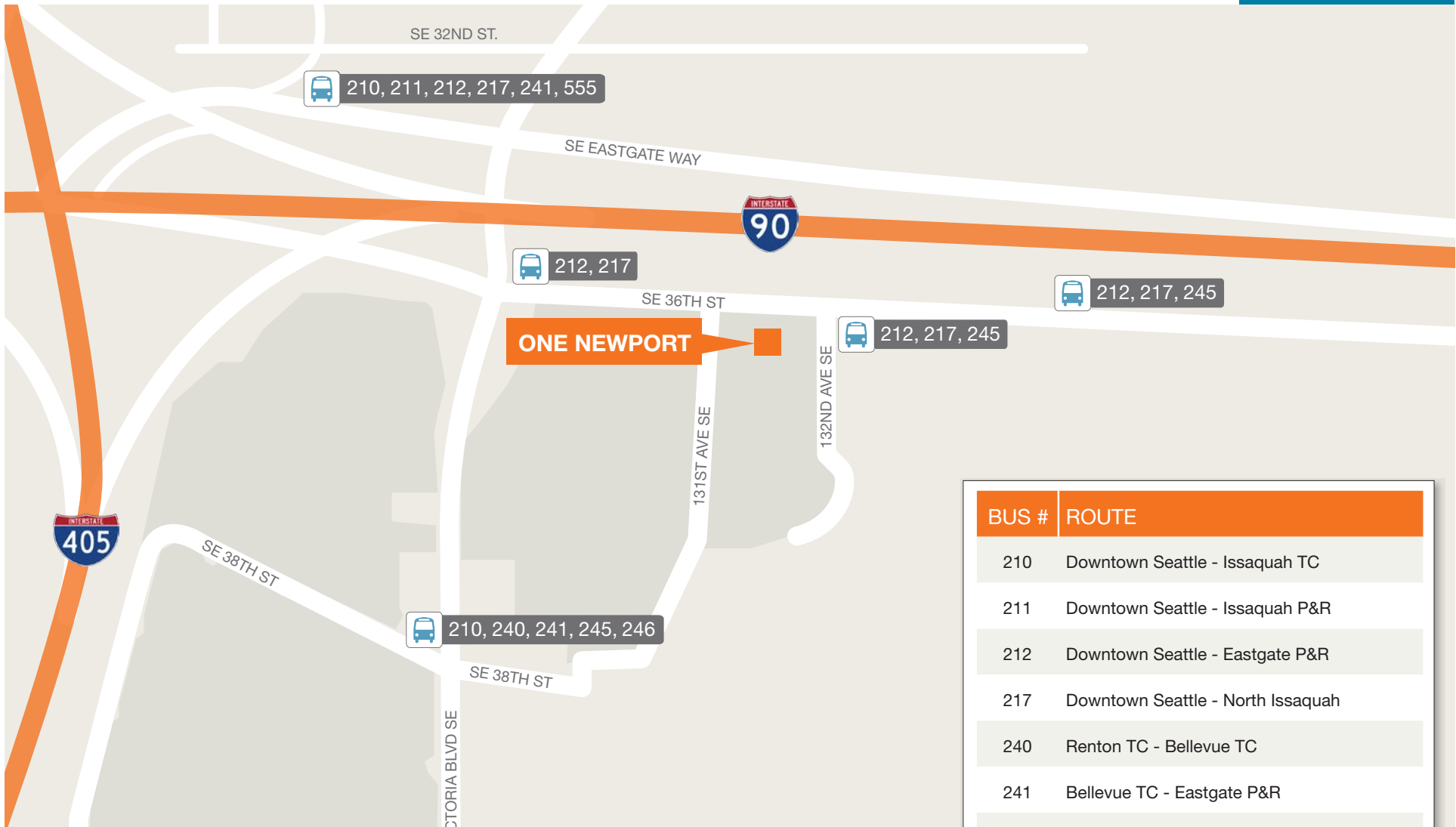




# Puget Sound Aerial



# Transportation Map



BUS #	ROUTE
210	Downtown Seattle - Issaquah TC
211	Downtown Seattle - Issaquah P&R
212	Downtown Seattle - Eastgate P&R
217	Downtown Seattle - North Issaquah
240	Renton TC - Bellevue TC
241	Bellevue TC - Eastgate P&R
245	Factoria - Kirkland P&R
246	Clyde Hill - Somerset, Eastgate P&R
555	Northgate TC - Issaquah Highlands P&R

**9** bus routes and **5** bus stops within walking distance.

Direct connectivity to **18** Transit Centers (TC) and Park and Rides (P&R).