



**CUSHMAN &  
WAKEFIELD**

FOR LEASE

# CAPITAL CORPORATE CENTER

3320 & 3330 DATA DRIVE & 10680 WHITE ROCK RD  
RANCHO CORDOVA, CA



**5 BUILDING COMPLEX  
ON THE CORNER OF WHITE  
ROCK RD & DATA DRIVE**

## BUILDING HIGHLIGHTS

- Move in ready suites with immediate availability
- Multiple buildings allow for easy expansion or downsizing capabilities
- Multiple Suites from ±1,508 RSF
- Abundant Free Parking
- Easy Access to Highway 50 from Zinfandel Drive
- On-site Deli at 3320 Data Drive
- Mature Landscaping provides plenty of shade and outdoor seating, plus soothing water features

## LEASING STRENGTHS

- Economic lease rates in a quality project
- Sophisticated ownership with over 500,000 SF in surrounding corridor
- Professionally managed by KCM Property Management

## LEASE TERMS

LEASE RATES	<b>\$1.65/RSF</b>
TENANT IMPROVEMENTS	<b>Negotiable on a suite by suite basis</b>
PARKING	<b>Free, 4/1000 SF</b>

**RON THOMAS, SIOR**  
Executive Director  
+1 916 288 4801  
ron.thomas@cushwake.com  
LIC #01193241

**CHRIS SCHWARZE**  
Executive Director  
+1 916 288 4803  
chris.schwarze@cushwake.com  
LIC #01291261

**BLAKE BATULA**  
Associate  
+1 916 288 4423  
blake.batula@cushwake.com  
LIC #01948319

400 Capitol Mall, Suite 1800  
Sacramento, California 95814  
main +1 916 288 4800  
**cushmanwakefield.com**



**CUSHMAN & WAKEFIELD**

FOR LEASE

# CAPITAL CORPORATE CENTER

3320 & 3330 DATA DRIVE & 10680 WHITE ROCK RD  
RANCHO CORDOVA, CA

## 3330 DATA DRIVE



## 10680 WHITE ROCK




---

3330 DATA                      SUITE 250 ±5,510 rsf Available

---

10680 WHITE ROCK           SUITE 110 ±1,580 rsf

---

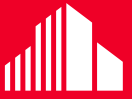


**RON THOMAS, SIOR**  
Executive Director  
+1 916 288 4801  
ron.thomas@cushwake.com  
LIC #01193241

**CHRIS SCHWARZE**  
Executive Director  
+1 916 288 4803  
chris.schwarze@cushwake.com  
LIC #01291261

**BLAKE BATULA**  
Associate  
+1 916 288 4423  
blake.batula@cushwake.com  
LIC #01948319

400 Capitol Mall, Suite 1800  
Sacramento, California 95814  
main +1 916 288 4800  
[cushmanwakefield.com](http://cushmanwakefield.com)



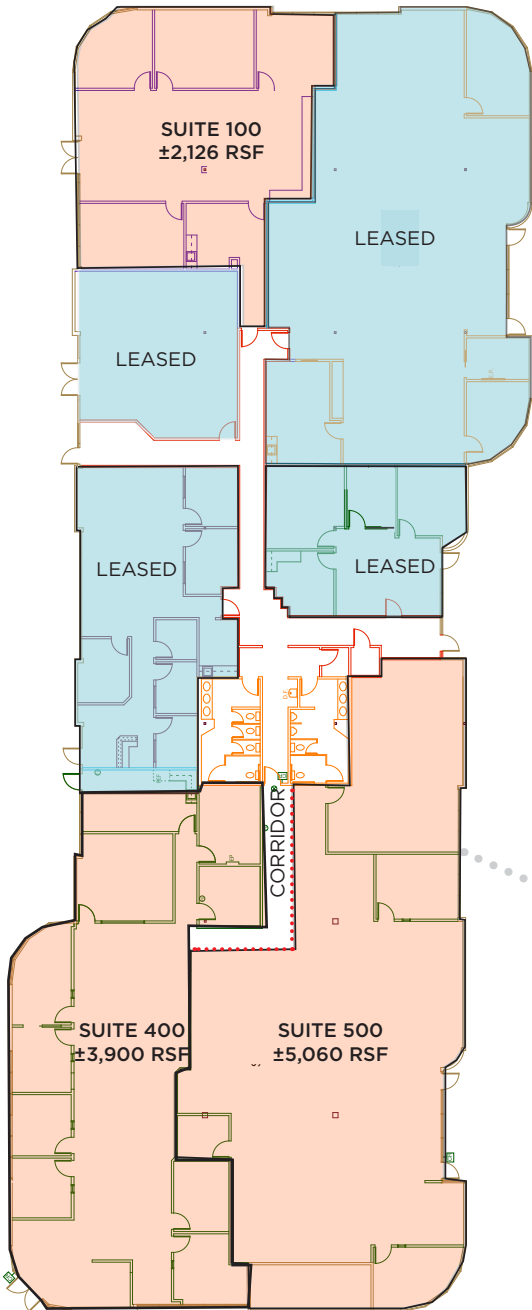
**CUSHMAN &  
WAKEFIELD**

FOR LEASE

# CAPITAL CORPORATE CENTER

3320 & 3330 DATA DRIVE & 10680 WHITE ROCK RD  
RANCHO CORDOVA, CA

## 3320 DATA DRIVE



3320 DATA

±10,686 rsf Available

SUITE 100

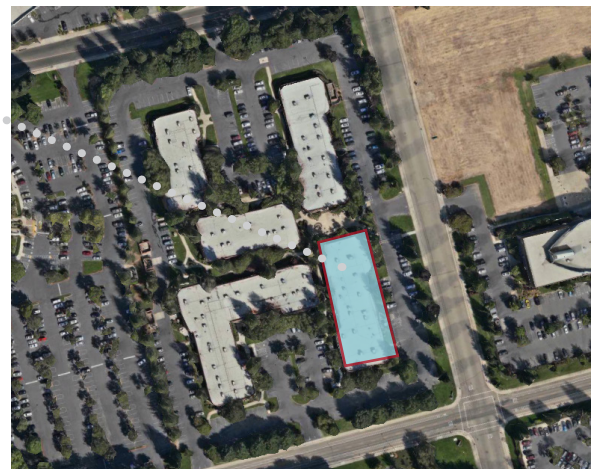
±2,126 rsf Available

SUITE 400

±3,500 rsf Available 04.01.16

SUITE 500

±5,060 rsf Available



**RON THOMAS, SIOR**  
Executive Director  
+1 916 288 4801  
ron.thomas@cushwake.com  
LIC #01193241

**CHRIS SCHWARZE**  
Executive Director  
+1 916 288 4803  
chris.schwarze@cushwake.com  
LIC #01291261

**BLAKE BATULA**  
Associate  
+1 916 288 4423  
blake.batula@cushwake.com  
LIC #01948319

400 Capitol Mall, Suite 1800  
Sacramento, California 95814  
main +1 916 288 4800  
[cushmanwakefield.com](http://cushmanwakefield.com)





**CUSHMAN &  
WAKEFIELD**

FOR LEASE

# CAPITAL CORPORATE CENTER

3320 & 3330 DATA DRIVE & 10680 WHITE ROCK RD  
RANCHO CORDOVA, CA

## GALLERY



**RON THOMAS, SIOR**  
Executive Director  
+1 916 288 4801  
ron.thomas@cushwake.com  
LIC #01193241

**CHRIS SCHWARZE**  
Executive Director  
+1 916 288 4803  
chris.schwarze@cushwake.com  
LIC #01291261

**BLAKE BATULA**  
Associate  
+1 916 288 4423  
blake.batula@cushwake.com  
LIC #01948319

400 Capitol Mall, Suite 1800  
Sacramento, California 95814  
main +1 916 288 4800  
[cushmanwakefield.com](http://cushmanwakefield.com)





**CUSHMAN &  
WAKEFIELD**

FOR LEASE  
**CAPITAL CORPORATE CENTER**  
3320 & 3330 DATA DRIVE & 10680 WHITE ROCK RD  
RANCHO CORDOVA, CA

**AERIAL**

**ZINFANDEL SQUARE SHOPPING CENTER**

TARGET	KOHL'S
PET'S MART	RED ROOF INN
HOOTERS	GROCERY OUTLET
PANDA EXPRESS	ROSS
GOLDEN 1 CREDIT UNION	JAMBA JUICE

**HOTELS**

1	EXTENDED STAY
2	BEST WESTERN PLUS
3	COURTYARD

**STORE**

4	CVS
---	-----

**LOCATION**

**SHOPPING CENTER AT 3101 ZINFANDEL DR.**

SALA THAI
SOHO SUSHI
BANK OF AMERICA

**RON THOMAS, SIOR**  
Executive Director  
+1 916 288 4801  
ron.thomas@cushwake.com  
LIC #01193241

**CHRIS SCHWARZE**  
Executive Director  
+1 916 288 4803  
chris.schwarze@cushwake.com  
LIC #01291261

**BLAKE BATULA**  
Associate  
+1 916 288 4423  
blake.batula@cushwake.com  
LIC #01948319

400 Capitol Mall, Suite 1800  
Sacramento, California 95814  
main +1 916 288 4800  
[cushmanwakefield.com](http://cushmanwakefield.com)