

±34 ACRES - LAKE AVENUE

EXCLUSIVE LISTING | NAMPA, IDAHO



PROPERTY OVERVIEW Offering includes approximately 34 acres of beautiful country land located near Lake Lowell/Deerflat Wildlife Preserve and Lake Lowell Park. Nice location with endless possibilities and easy access to shopping and other local entertainment. Private and nice views.

LOCATION S/SEC Lake Avenue & Roosevelt Avenue

PRICE \$608,650

SIZE ±34.03 Acres

PARCEL R330210000, R331240110

LOCATION DETAILS Property lies on the east side of Lake Avenue, south from the southeast corner of Lake Avenue and Roosevelt

PROPERTY HIGHLIGHTS

- Near Lake Lowell/Deerflat Wildlife Preserve
- Beautiful views in a country setting
- Close to Lake Lowell Park

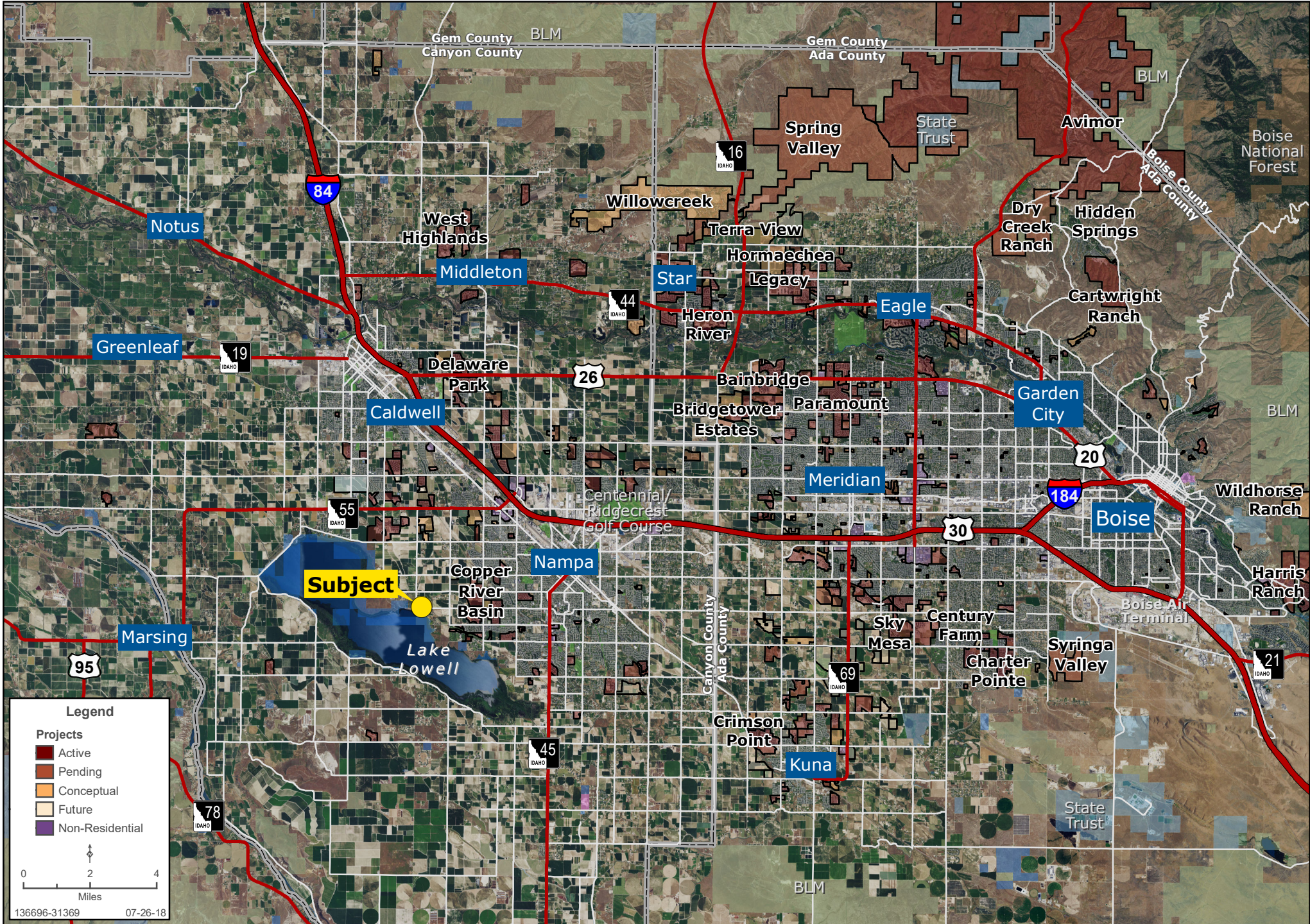
Tyler Johnson | tjohnson@landadvisors.com

3597 East Monarch Sky Lane, Boise, ID 83646, ph.208.366.8700 | landadvisors.com

The information contained herein is from sources deemed reliable. We have no reason to doubt its accuracy but do not guarantee it. It is the responsibility of the person reviewing this information to independently verify it. This package is subject to change, prior sale or complete withdrawal.

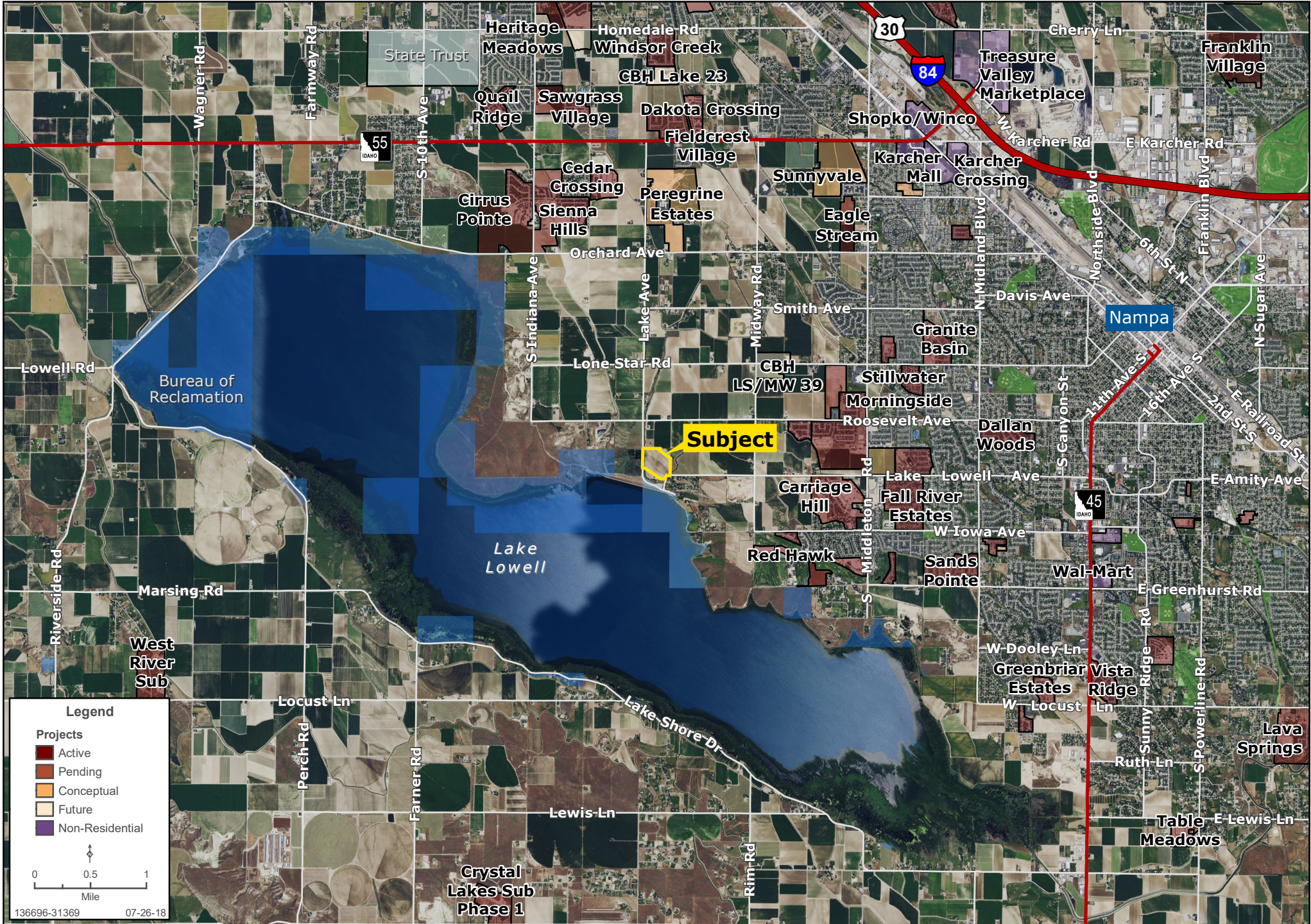
12 21 2018





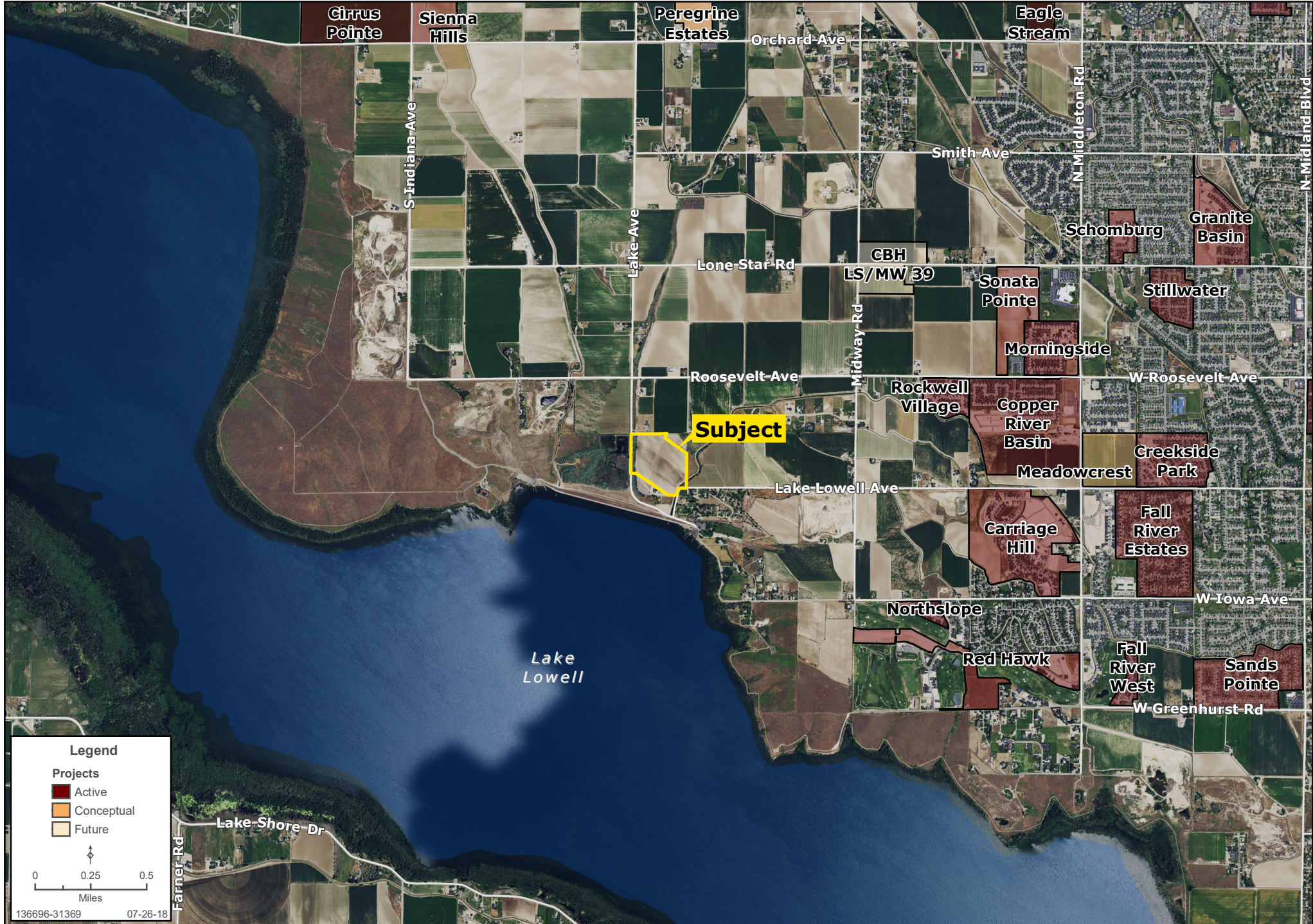
SURROUNDING DEVELOPMENT MAP

Tyler Johnson | 208.866.3579 | www.landadvisors.com



SURROUNDING AREA MAP

Tyler Johnson | 208.866.3579 | www.landadvisors.com



PROPERTY DETAIL MAP

Tyler Johnson | 208.866.3579 | www.landadvisors.com



0 200 400
Feet
136696-31369 07-26-18

Lake Lowell